

RISING EXPECTATIONS — SEA RAY



Builder: SEA RAY

Year Built: 2007

Model: Cruiser

Price: PRICE ON APPLICATION

Location: United States

LOA: 48' 0" (14.63m)

Beam: 14' 9" (4.47m)

Min Draft: 3' 11" (1.17m)

Max Draft: 3' 11" (1.17m)

Our experienced yacht broker, Andrey Shestakov, will help you choose and buy a yacht that best suits your needs **Rising Expectations — SEA RAY** from our catalogue. Presently, at Shestakov Yacht Sales Inc., we have a wide variety of yachts available on our sale's list. We also work in close contact with all the big yacht manufacturers from all over the world.

If you would like to buy a yacht **Rising Expectations — SEA RAY** or would like help answering any questions concerning purchasing, selling or chartering a yacht, please call **+1(954)274-4435**

TABLE OF CONTENTS

TABLE OF CONTENTS	2
SPECIFICATIONS	3
Overview	3
Basic Information	3
Dimensions	3
Speed, Capacities and Weight	4
Accommodations	4
Hull and Deck Information	4
Engine Information	4
DETAILED INFORMATION	5
Key Features & Upgrades	5
Exclusions	13
Disclaimer	13
PHOTOS	14
Master SR	15
Master Head	15
VIP SR	16
Vanity Area	16
CONTACTS	18
Contact details	18
Telephones	18
Office hours	18
Address	18

SPECIFICATIONS

Overview

---NEW BROKERAGE LISTING--- Fresh Water 2007 blue hull 48 sundancer. Original owner with only 80 Fresh Water hours.

Loaded with upgrades including bow thruster, Bose in master/salon, SAT tv, dual RayMarine E series radar/plotter and Hydraulic Swim Platform.

Boat is easy to see in Fort Lauderdale area and truly must see if your in the market for clean 48 sundancer. She was just shipped down from Lake Michigan to be SOLD!!

TENDER NOT INCLUDED

Basic Information

Category: Cruiser

Sub Category: Express

Model Year: 2007

Year Built: 2007

Country: United States

Cockpit: Yes

Dimensions

LOA: 48' 0" (14.63m)

Beam: 14' 9" (4.47m)

Min Draft: 3' 11" (1.17m)

Max Draft: 3' 11" (1.17m)

Speed, Capacities and Weight

Displacement: 34250 Pounds

Water Capacity: 110 Gallons

Holding Tank: 60 Gallons

Fuel Capacity: 400 Gallons

Accommodations

Total Cabins: 2

Total Heads: 2

Hull and Deck Information

Hull Material: Fiberglass

Hull Color: BLUE

Engine Information

Engines: 2

Manufacturer: Cummins

Model: QSC 540

Engine Type: Inboard

Fuel Type: Diesel

DETAILED INFORMATION

Key Features & Upgrades

Options & Upgrades

- V-DRIVE INBOARD QSC 540
- V-DRIVE INBOARD QSC 540
- Hydraulic Swim Platform
- Satellite TV
- Stainless Steel Anchor
- Cockpit Stereo Upgrade ****Rare Option****
- Navy Canvas
- Black Sea-Counter tops
- Dark Cherry Wood (Hi-gloss)
- T-Cummins 540 QSC V/D (T-517 PHP)
- Cockpit A/C w/ Generator Upgrade
- Bow Thruster
- Dash Cover-Canvas
- GPS/Chartplotter/Radar Raymarine
- GPS/Chartplotter Raymarine
- Autopilot Raypilot ST 8002
- Bose LS48-Mstrm & Salon
- IPOD Interface w/Docking
- LCD TV/DVD-Cockpit
- LCD TV/DVD-Mid Strm
- Wood Galley Flooring
- Generator Sound Box (Diesel only)
- Salon Ottoman
- Macerator w/Seacock Interlock System
- Cockpit Refrigerator (In lieu of Std. Ice maker)
- Rod Holders, 2
- Spotlight, ACR
- Sun Pad Forward Deck w/ Backrest
- Lighting, Underwater-Transom
- Vacuum System
- Washer/Dryer Combo
- Windlass, All-Chain (In lieu of Std. Rope/Chain)
- Yacht Flag and Flag Pole
- Blue Hull GelCoat

Key Features

- U-shaped seating with storage below.
- Standard VHF radio.
- Sirius Satellite Receiver with antenna.
- Large transom storage with gas-assist lid.
- Standard 26" LCD flatscreen TV with remote DVD player in salon.
- Satin-nickel-finish push-button knobs and switch plates.
- Standard Ultraleather HP interior seating.
- Innerspring mattress standard in master stateroom.
- Convertible salon sofa-sleeper.
- Optional washer/dryer combo.
- Swim platform with concealed ladder.
- Standard hardtop with overhead lighting and two large opening sunroof hatches.
- Optional recessed forward deck sun pad.
- Fiberglass stringer system.
- Standard 240v/50 Amp shore power with convenient Glendinning cablingmaster.
- Shore power and water inlets concealed in transom storage.
- Aluminum windshield frame and electric front vent.
- Patented underwater exhaust for quieter cruising.
- Dripless shaft logs with extra seal carrier kit.
- High-water bilge pump and alert system at helm.
- Optional bow thruster.
- Meets applicable USCG, NMMA, and ABYC (the highest "building code") standards.
- Sea Ray Owners Club membership.
- Standard SmartCraft Instrumentation and VesselView.

Air Conditioning / Heating

- Custom Integral Vent System
- Zone-Controlled Reverse-Cycle System

Cabin Features

- Blinds, Wood
- Carbon Monoxide Monitor
- Carpet Runners, Interior
- Carpet, Masland
- Handrails
- Lighting, 12V Indirect
- Lighting, 12V Xenon
- Outlet & Switch Plates
- Outlet, Phone

- Outlets, 120V GFI Protected
- Outlets, 12V Accessory
- Pillows, Accent
- Steps, Entryway
- Storage, In-Floor
- Wood Interior Package

Canvas (Sunbrella)

- Aft Curtain
- Canvas Storage Bag

Certifications

- Meets Applicable USCG & ABYC Standards
- NMMA Certification

Cockpit Features

- Beverage Holders (10)
- Carpet Liner, Snap-In
- Door, Sliding Cabin Entry
- Door, Transom
- Floor Liner, Fiberglass
- Handrails
- Hardtop, Fiberglass
- Hatch, Engine Service
- Icemaker, 120V
- Lighting, Indirect
- Outlet, 120V GFI Protected
- Outlet, 12V Accessory
- Seating L-Shaped Bench
- Seating, Pivoting Double Helm
- Seating, U-Shaped
- Ships Bell
- Steps, Boarding
- Stereo, Clarion
- Storage, Side Panel
- Table, Cockpit
- Wet Bar

Control Station

- Alarms, High-Water
- Compass
- Emergency Start System
- Gel-Coated Dash
- Horn, Air
- Instrument Panel
- Power Steering, Hydraulic
- SmartCraft VesselView Display
- SmartCraft Diagnostics
- Switch Panel
- Switches, Illuminated

Electrical Systems / Electronics

- Batteries, 8-D
- Battery Charger Overcurrent Protection
- Battery Charger/Converter, 120V/50
- Battery Switches
- Cable TV System
- Panel DC Circuit Breaker-Remote
- Panel, DC Main Breaker
- Panel, Main Distribution-AC
- Panel, Main Distribution-DC
- Shore Power, Cablemaster
- Transformer, Shore Power Isolation
- Wiring, Color-Coded
- Electronics Circuit, 12V/50 Amp
- VHF Radio

Engine Room

- Bilge Pumps, 12V
- Bilge Pumps, 12V (2)
- Blowers, 12V Bilge (2)
- Exhaust, Underwater
- Fire Suppression System
- Gel-Coated Engine Room
- Insulation, Engine Room - 2"

- Ladder
- Lighting, 12V
- Oil Changer System

Master Head & Shower

Master Head (Port):

- Bathroom Tissue Holder
- Door, Privacy
- Handrails
- Head, VacuFlush
- Power Vent, 12V
- Robe Hook
- Storage, Gunwale Cabinet
- Storage, Medicine Cabinet
- Vanity

Master Shower (Stbrd):

- Curtain, Shower
- Door, Privacy
- Handrails
- Shower
- Towel Rings (2)

Master Stateroom

- Bed, Full-Size Island-Style
- Door, Privacy Sliding Pocket
- Flooring, Wood
- Hanging Lockers (2)
- Mirrored Rope Locker Bulkhead
- Storage, Side Shelves
- TV 15" Flatscreen

Fuel System

- Crossover Fuel System

- Fuel Filters
- Fuel Lines (USCG - Type A-1)
- Fuel Tanks, Aluminum

Galley

- Coffeemaker, 120V
- Countertop, Solid-Surface
- Handrails
- Microwave/Convection Oven, 120V
- Outlet, 12V Accessory
- Power Vent, 12V
- Refrigerator/Freezer, Upright
- Storage, Drawers
- Storage, Upper & Lower
- Stove, Two-Burner (Surface Mounted)
- Trash Receptacle

Generator

9.0 kW Onan - Diesel, 120/240V/60 Cycle

Hull & Deck Features

- Bottom Paint
- Bow Rail
- Cleats, Custom Sea Ray Thru-Bolted (8)
- Deck Fill Plates
- Deck Rails
- Drain Plugs
- Graphics, Striping
- Handrails
- Hatch, Deck Vent
- Hull Windows
- Lights, Navigation
- Portlights
- Resin, High-Performance Vinylester
- Rub Rail, PVC
- Skylight, Flush Mount

- Storage, Transom Wall
- Stringer System, Fiberglass
- Hydraulic Swim Platform
- Thru-Hull Fittings
- Toe Rail
- Vent System, Engine Room
- Windshield Washer System
- Windshield Wipers
- Windshield, Tempered/Tinted Curved Glass

VIP Stateroom

- Bed, Twin (2) Mattresses
- Hanging Locker
- Portlight
- Privacy Door
- Storage, Cabinets

VIP Head

- Shower Curtain, Shower
- Door, Privacy
- Handrail
- Head, VacuFlush
- Robe Hook
- Shower
- Storage, Medicine Cabinet
- Towel Ring
- Vanity

Propulsion

T-VD-Cummins MerCruiser QSC 8.3-540 Diesel V-Drives (T-517 hp - 405 kW)

Salon

- Entertainment Center

- Mirror, Wall Accent
- Seating, L-Shaped Sofa
- Storage, Gunwale Cabinets
- Table, Dinette (Movable)

Underwater Gear

- Bonding System
- Propeller Shafts, 2"
- Propellers, Nibral 4-Blade Cup
- Rudders, Manganese-Bronze
- Seacocks
- Seawater Strainers
- Shaft Logs, Dripless
- Struts, Manganese-Bronze
- Trim Tabs, Hydraulic

Waste Systems

- Head System, VacuFlush
- Holding Tank
- Holding Tank Level Indicators
- Sump Box

Water System

- Freshwater Washdown Spigots
- Manifold System
- Pressure Water System
- Shower, Cockpit
- Water Heater (11-Gallon)
- Water Inlet, Dockside

Windlass System

- Anchor Chute
- Anchor Rope/Chain Storage (2)
- Anchor Washdown Spigot
- Anchor, Galvanized

- Windlass, Rope/Chain

Exclusions

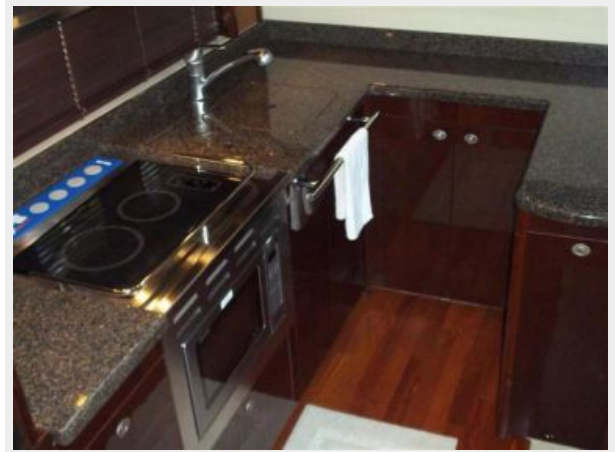
Owner's personal belongings.

Disclaimer

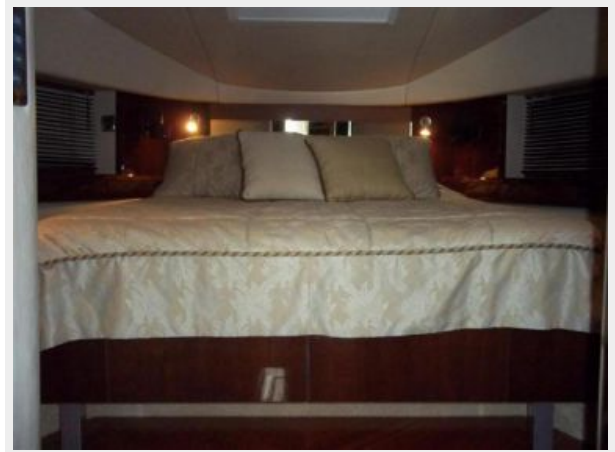
The Company offers the details of this vessel or yacht in good faith but cannot guarantee or warrant the accuracy of this information nor warrant the condition of the vessel. A buyer should instruct his representatives, agents, or his surveyors, to investigate such details as the buyer desires validated. This vessel or yacht is offered subject to prior sale, price change, or withdrawal without notice.

PHOTOS





Master SR



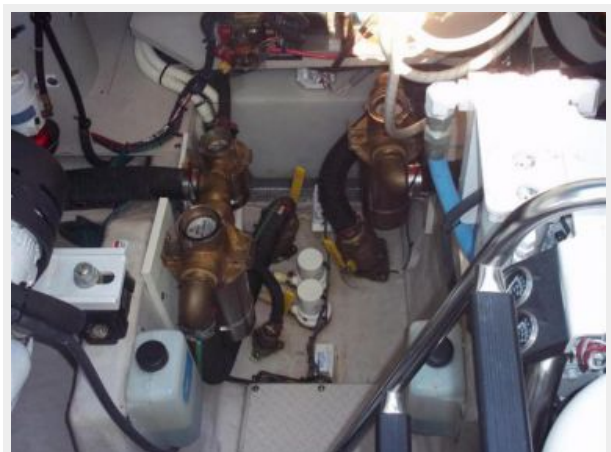
Master Head



VIP SR



Vanity Area





CONTACTS

Andrey Shestakov, leading yacht broker of the sales department of Shestakov Yacht Sales Inc. Shestakov Yacht Sales Inc., the official representative of the Miami/Fort Lauderdale FL headquarters.

Contact details

Email: andrey@shestakovyachtsales.com

Web: shestakovyachtsales.com/en/

Telephones

USA: +1(954)274-4435

Office hours

Monday – Saturday: **9:00 - 21:00** EDT

Sunday: **closed**

Address



Harbour Towne Marina, 850 NE 3rd St,
STE 213, Dania, FL 33004