

JULIA E — CHRIS CRAFT



Builder: CHRIS CRAFT

Year Built: 1973

Model: Motor Yacht

Price: PRICE ON APPLICATION

Location: United States

LOA: 68' 0" (20.73m)

Beam: 17' 2" (5.23m)

Min Draft: 4' 10" (1.47m)

Our experienced yacht broker, Andrey Shestakov, will help you choose and buy a yacht that best suits your needs **Julia E — CHRIS CRAFT** from our catalogue. Presently, at Shestakov Yacht Sales Inc., we have a wide variety of yachts available on our sale's list. We also work in close contact with all the big yacht manufacturers from all over the world.

If you would like to buy a yacht **Julia E — CHRIS CRAFT** or would like help answering any questions concerning purchasing, selling or chartering a yacht, please call **+1(954)274-4435**

TABLE OF CONTENTS

TABLE OF CONTENTS	2
SPECIFICATIONS	6
Overview	6
Basic Information	6
Dimensions	6
Speed, Capacities and Weight	6
Accommodations	6
Hull and Deck Information	7
Engine Information	7
DETAILED INFORMATION	8
Vessel Walkthrough	8
Salon	8
Dining Room	9
Galley	9
Master Stateroom	9
Master Head	10
Forward Stateroom -2	10
Forward Head	10
Starboard Stateroom	11
Port Stateroom	11
Guest Head	11
Helm	12
Electronics	12
Electrical System	13
Mechanical Equipment	13
Engine Room	13
Flybridge	14
Foredeck	14

Aft Deck	14
Hull	15
Exclusions	15
Exclusions	15
Disclaimer	15
PHOTOS	16
Salon	16
Salon	16
Salon	16
Salon	16
Salon Wetbar/Glass & Bottle Storage	16
Salon Wetbar/Refrigerator & Icemaker	16
Dinning Dish Storage	17
Dinning Room	17
Galley	17
Galley	17
Master Stateroom	17
Master Stateroom	17
Master Stateroom	18
Master Stateroom	18
Master Head	18
Master Head	18
Forward Stateroom	18
Forward Storage	18
Forward Head	19
forward Head	19
Starboard Stateroom	19
Port Stateroom	19
Guest Head	20

Guest Head	20
Washer / Dryer Separate Stack Unit	20
Helm	20
Helm Seating	21
Lower Station & New Autopilot	21
Electrical System	21
Electrical System	21
Engine Room	21
Engine Room	21
Bilge Storage	22
Bilge Storage	22
Bilge Storage	22
Prop Storage	22
Flybridge	22
Flybridge	22
Flybridge	23
Flybridge Captain Chairs	23
Flybridge-New Bimini & Front Curtains	23
New Bimini & Front Curtains	23
Flybridge Seating	23
Flybridge Wetbar	23
Flybridge	24
Aft Deck	24
Foredeck	24
Foredeck	24
New Foredeck Cover	24
New Foredeck Cover	24
Side Deck	25
Side Deck	25

New Bottom Paint & Zincs	25
New Bottom Paint & Zincs	25
Tide Ride Boarding Steps	26
Davit	26
Aft Profile	26
Profile	26
CONTACTS	27
Contact details	27
Telephones	27
Office hours	27
Address	27

SPECIFICATIONS

Overview

Classic 68' Chris Craft Roamer

Twin Detroit 12V71 Diesels

5 Staterooms ~ 3 Heads

Twin Generators

Basic Information

Category: Motor Yacht

Model Year: 1973

Year Built: 1973

Country: United States

Coast Guard #: 549737

Cockpit: Yes

Dimensions

LOA: 68' 0" (20.73m)

Beam: 17' 2" (5.23m)

Min Draft: 4' 10" (1.47m)

Speed, Capacities and Weight

Water Capacity: 350 Gallons

Fuel Capacity: 1350 Gallons

Accommodations

Total Cabins: 5

Total Berths: 11

Sleeps: 10

Total Heads: 3

Hull and Deck Information

Hull Material: Aluminum

Deck Material: Fiberglass Sandwich

Hull Configuration: Semi Vee

Hull Color: White

Hull Finish: Steel

Engine Information

Engines: 2

Manufacturer: Detroit Diesel

Model: 12V71-TI

Engine Type: Inboard

Fuel Type: Diesel

DETAILED INFORMATION

Vessel Walkthrough

The iconic boat builder, Chris Craft built the 68' Roamer on an aluminum hull for strength and durability. This yacht features 5 staterooms, 3 Aft for the owner and guest and 2 forward for crew or additional guest. The huge salon uses the full 17' beam and opens onto a cozy aft deck.

The wheel house is on the salon level and has great visibility all around. This yacht also features a formal dining room and complete galley with dishwasher, stove, oven, microwave, full size refrigerator and a cozy booth style dinette: powered by Detroit Diesels 12V71-TI engines and dual generators. Her large bridge accommodates a nice size party and has a bimini top for sun protection. A davit and Boston Whaler tender are included.

June/July 2013- This vessel has undergone recent service on the engines and gensets to include complete service, new impellers and belts. The fuel tank has been cleaned and she has fresh fuel. All air conditioners have been full serviced and charged. A **NEW Simrad NSS12 Color GPS Chartplotter** has been installed on the bridge with a **Simrad AP24 Autopilot** with repeater at lower station. A **NEW forward bimini with a combination of hard glass and Isinglass front curtains has been installed on the bridge.** The bridge bench seats have been rebuilt with starboard for extended life and all the wood doors on the bridge cabinetry have been replaced with starboard. Both helm chairs have **NEW Cushions.** A **NEW removable foredeck cover** has been designed and installed.

This classic Motor Yacht by Chris Craft is in vintage condition and is fully functional for coastal cruising and/or live aboard.

Salon

- Recessed overhead lights w/dimmers
- 40" Vizio flat screen TV
- Sony component stereo
- Kenwood speakers
- Large sofa
- Coffee table
- End tables – 2
- Blinds for all windows
- Pocket doors to aft deck
- Bar w/ 4 bar stools
- Wet bar w/sink
- Ice maker
- Refrigerator
- Great visibility from the helm to aft
- Custom light fixtures
- Carpeting
- Air conditioned – 16K

Dining Room

- Glass top dining table – seats 6
- Full bean dining room
- Air conditioned
- Window blinds
- Iron stone dishware
- Serving bar w/ 3 stools
- End table w/ lamp
- Carpeting
- Recessed overhead lights
- Broom closet
- Storage along portside

Galley

- 4 Burner GE electric stove w/ oven
- Instant hot water dispenser- filtered
- Filtered cold water
- Double well stainless steel sink
- Sharp microwave
- Nutone flushmount blender
- Refrigerator w/separate freezer
- Disposal in sink
- Serving bar
- Booth style dinette opposite galley
- Maple wood flooring
- Dinette converts to berth
- Window blinds
- GE electric dishwasher

Master Stateroom

- Queen size island berth
- Two full length closets
- Chest of drawers to starboard
- Chest of drawers to port w/ dressing area
- Mini blinds
- Full length wall mirror
- Flat screen TV
- Night tables -2- w/ drawers & storage
- Air conditioned
- Two lamps for night table
- Ensuite head
- Privacy door
- Telephone / intercom
- Recessed overhead lights

Master Head

- Privacy door
- Tub w/ shower doors & shower
- Vanity w/sink
- Vacuflush toilet
- Maple flooring
- Medicine cabinet
- Mini blinds

Forward Stateroom -2

Forward of galley – Two staterooms w/ accordion style privacy doors

- Over & under berths to port
- Single berth to starboard
- Hanging lockers-2
- Chest of drawers to starboard
- Portholes – port & starboard
- Intercom phone / landline
- Carpeting
- Port & starboard air conditioners
- Reading lights
- Ensuite head forward
- According style privacy doors

Forward Head

- Serves forward staterooms
- Separate shower stall
- Vanity w/ sink
- Electric flush toilet
- Maple wood floor
- Medicine cabinet
- Air conditioned
- Intercom phone / landline

Starboard Stateroom

- Twin beds
- Night table w/ drawers
- Private access to head
- Reading lights & lamp
- Privacy door
- Mini blinds
- Full length hanging locker
- Telephone / intercom
- Air conditioned

Port Stateroom

- Twin beds
- Night table w/ drawers
- Full length hanging locker
- Full length mirror
- Privacy door
- Reading lights
- Air conditioned

Guest Head

- Accessed from companionway or starboard stateroom
- Vanity w/ double sink
- Medicine cabinets
- Maple wood flooring
- Separate shower stall
- Mini blinds
- Full length mirror
- Linen closet

Helm

Lower Station:

- Two captain chairs
- Dual hydraulic steering
- Dual panish binnacle controls
- Compass
- Port & starboard pilothouse doors
- Ladder to flybridge
- Air conditioned
- Stainless steel helm wheel

Electronics

Lower Station:

- Data marine depth finder
- Sixtex VHF radio
- Sandpiper speed distance log
- Compass
- VHF radio
- Data marine depth finder
- **NEW Simrad AP24 Autopilot- July 2013**

Bridge Electronics:

- **ICOM VHF Radio**
- **NEW Simrad NSS12 Color GPS Chartplotter - July 2013**
- **NEW Simrade AP 24 Autopilot - July 2013**
- **Compass**

Electrical System

- 12 Volt system – DC
- 120/240 AC system
- Twin 15kW Onan gensets
- 10 Batteries – 2 deep cycle & 4 each 8 volt in series per side
- Battery charger -2
- Bonding system
- Isolation transform
- Distribution panels
- 2-30 Amp shore power cords
- 1-50 Foot 50 amp shore core
- 1-25 Foot 50 amp shore cord
- Shore power connection – port & starboard
- **Both Gensets Serviced - June 2013**

Mechanical Equipment

- Air compressor
- Oil exchange system
- 7 Cruisair air conditioners - **Serviced & Charged - July 2013**
- Washer & dryer – separate stack unit

Engine Room

- **Complete Engine Service - June 2013**
- Twin 12V71 Detroit Diesel
- Freshwater cooled
- Sea water strainers
- Dual fuel filters
- Oil transfer system
- Upgraded dripless shaft seals
- Blowers
- Engine room lights

Flybridge

- Large L-shaped lounge / settee
- **Lounge seat rebuilt w/ starboard - June 2013**
- **New Forward bimini top w/Hardglass/Isinglass front curtains - June 2013**
- Wet bar w/ sink and storage
- Ice maker
- Radar arch
- Bimini top
- Davit for tender
- Tender storage
- Two captain chairs **w/New cushions - June 2013**
- Flybridge control station
- **All cabinet doors replaced w/ starboard - June 2013**

Foredeck

- Large molded in seating area w/ cushions
- Wide side decks
- Bow rails w/ teak cap
- Teak toe rail
- Hand rails – port & starboard
- Freshwater wash down
- Windlass capstan
- **NEW Removable foredeck cover - July 2013**

Aft Deck

- Accessed from salon through double pocket doors

Hull

- Aluminum hull w/ full keel
- Antifouling paint
- Electrolysis monitoring system
- Zinc anodes

Exclusions

- Personal Items

Exclusions

Owner's personal belongings.

Disclaimer

The Company offers the details of this vessel or yacht in good faith but cannot guarantee or warrant the accuracy of this information nor warrant the condition of the vessel. A buyer should instruct his representatives, agents, or his surveyors, to investigate such details as the buyer desires validated. This vessel or yacht is offered subject to prior sale, price change, or withdrawal without notice.

PHOTOS

Salon



Salon



Salon



Salon



Salon Wetbar/Glass & Bottle Storage



Salon Wetbar/Refrigerator & Icemaker



Dinning Room



Dinning Dish Storage



Galley



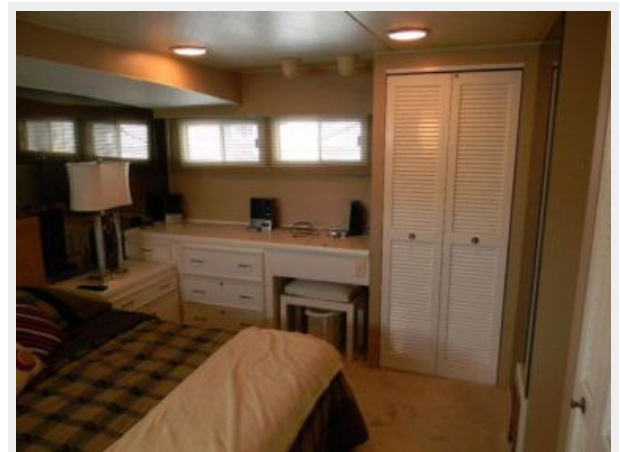
Galley



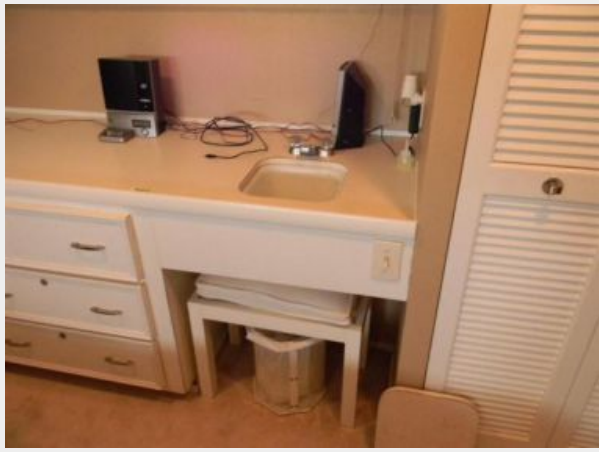
Master Stateroom



Master Stateroom



Master Stateroom



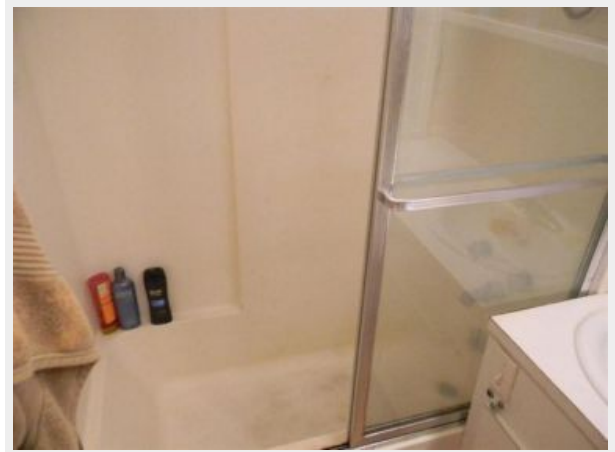
Master Stateroom



Master Head



Master Head



Forward Stateroom



Forward Storage



Forward Head



forward Head



Starboard Stateroom



Port Stateroom



Guest Head



Guest Head



Washer / Dryer Separate Stack Unit



Helm



Helm Seating



Lower Station & New Autopilot



Electrical System



Electrical System



Engine Room



Engine Room



Bilge Storage



Bilge Storage



Bilge Storage



Prop Storage



Flybridge



Flybridge



Flybridge



Flybridge Captain Chairs



Flybridge-New Bimini & Front Curtains



New Bimini & Front Curtains



Flybridge Seating



Flybridge Wetbar



Flybridge



Aft Deck



Foredeck



Foredeck



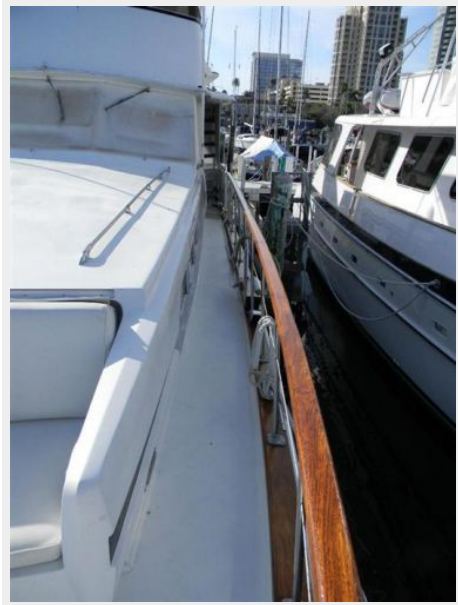
New Foredeck Cover



New Foredeck Cover



Side Deck



Side Deck



New Bottom Paint & Zincs



New Bottom Paint & Zincs



Tide Ride Boarding Steps



Davit



Aft Profile



Profile



CONTACTS

Andrey Shestakov, leading yacht broker of the sales department of Shestakov Yacht Sales Inc. Shestakov Yacht Sales Inc., the official representative of the Miami/Fort Lauderdale FL headquarters.

Contact details

Email: andrey@shestakovyachtsales.com

Web: shestakovyachtsales.com/en/

Telephones

USA: +1(954)274-4435

Office hours

Monday – Saturday: **9:00 - 21:00** EDT

Sunday: **closed**

Address



Harbour Towne Marina, 850 NE 3rd St,
STE 213, Dania, FL 33004