

## JULIA E — CHRIS CRAFT



**Судостроитель:** CHRIS CRAFT

**Год постройки:** 1973

**Модель:** Моторная яхта

**Цена:** ЦЕНА ЯХТЫ ПО ЗАПРОСУ

**Местонахождение:** United States

**Длина общая:** 68' 0" (20.73m)

**Ширина:** 17' 2" (5.23m)

**Мин. осадка:** 4' 10" (1.47m)

Купить **Julia E — CHRIS CRAFT** а также выбрать подходящую вам яхту из нашего каталога яхт вам поможет опытный яхтенный брокер Андрей Шестаков. На сегодняшний день компания **Shestakov Yacht Sales Inc.** имеет большое количество яхт в собственном списке продаж, а также тесно сотрудничает со всеми крупными яхтенными производителями по всему миру.

Для того чтобы купить яхту **Julia E — CHRIS CRAFT** а также проконсультироваться по любому вопросу связанному с покупкой, продажей, чартером яхт позвоните по телефону **+7(918)465-66-44**.

# ОГЛАВЛЕНИЕ

---

ОГЛАВЛЕНИЕ	2
ХАРАКТЕРИСТИКИ	6
Обзор	6
Основная информация	6
Размеры	6
Скорость, вместимость и масса	6
Размещение	6
Корпус и палуба	7
Информация о двигателе	7
ПОДРОБНОЕ ОПИСАНИЕ	8
Vessel Walkthrough	8
Salon	8
Dining Room	9
Galley	9
Master Stateroom	9
Master Head	10
Forward Stateroom -2	10
Forward Head	10
Starboard Stateroom	11
Port Stateroom	11
Guest Head	11
Helm	12
Electronics	12
Electrical System	13
Mechanical Equipment	13
Engine Room	13
Flybridge	14
Foredeck	14

Aft Deck	14
Hull	15
Exclusions	15
Исключения	15
Отказ от ответственности	15
<b>ФОТОГРАФИИ</b>	<b>16</b>
Salon	16
Salon	16
Salon	16
Salon	16
Salon Wetbar/Glass & Bottle Storage	16
Salon Wetbar/Refrigerator & Icemaker	16
Dinning Dish Storage	17
Dinning Room	17
Galley	17
Galley	17
Master Stateroom	17
Master Stateroom	17
Master Stateroom	18
Master Stateroom	18
Master Head	18
Master Head	18
Forward Stateroom	18
Forward Storage	18
Forward Head	19
forward Head	19
Starboard Stateroom	19
Port Stateroom	19
Guest Head	20

---

Guest Head	20
Washer / Dryer Separate Stack Unit	20
Helm	20
Helm Seating	21
Lower Station & New Autopilot	21
Electrical System	21
Electrical System	21
Engine Room	21
Engine Room	21
Bilge Storage	22
Bilge Storage	22
Bilge Storage	22
Prop Storage	22
Flybridge	22
Flybridge	22
Flybridge	23
Flybridge Captain Chairs	23
Flybridge-New Bimini & Front Curtains	23
New Bimini & Front Curtains	23
Flybridge Seating	23
Flybridge Wetbar	23
Flybridge	24
Aft Deck	24
Foredeck	24
Foredeck	24
New Foredeck Cover	24
New Foredeck Cover	24
Side Deck	25
Side Deck	25

---

---

New Bottom Paint & Zincs	25
New Bottom Paint & Zincs	25
Tide Ride Boarding Steps	26
Davit	26
Aft Profile	26
Profile	26
<b>КОНТАКТЫ</b>	<b>27</b>
Контактная информация	27
Телефоны	27
Время работы	27
Адрес	27

# ХАРАКТЕРИСТИКИ

## Обзор

Classic 68' Chris Craft Roamer

Twin Detroit 12V71 Diesels

5 Staterooms ~ 3 Heads

Twin Generators

## Основная информация

Тип судна: Моторная яхта

Модельный год: 1973

Год постройки: 1973

Страна: United States

Номер регистрации в береговой  
охране: 549737

Кубрик: Да

## Размеры

Длина общая: 68' 0" (20.73m)

Ширина: 17' 2" (5.23m)

Мин. осадка: 4' 10" (1.47m)

## Скорость, вместимость и масса

Вместимость воды: 350 Gallons

Объем топливного бака: 1350 Gallons

## Размещение

Всего кают: 5

Всего коек: 11

Спальные места: 10

Всего ком. состава: 3

## Корпус и палуба

---

**Материал корпуса:** Aluminum

**Материал палубы:** Fiberglass Sandwich

**Комплектация корпуса:** Semi Vee

**Цвет корпуса:** White

**Отделка корпуса:** Steel

## Информация о двигателе

---

**Двигатели:** 2

**Производитель:** Detroit Diesel

**Модель:** 12V71-T1

**Тип двигателя:** Inboard

**Тип топлива:** Diesel

---

# ПОДРОБНОЕ ОПИСАНИЕ

---

## Vessel Walkthrough

---

The iconic boat builder, Chris Craft built the 68' Roamer on an aluminum hull for strength and durability. This yacht features 5 staterooms, 3 Aft for the owner and guest and 2 forward for crew or additional guest. The huge salon uses the full 17' beam and opens onto a cozy aft deck.

The wheel house is on the salon level and has great visibility all around. This yacht also features a formal dining room and complete galley with dishwasher, stove, oven, microwave, full size refrigerator and a cozy booth style dinette: powered by Detroit Diesels 12V71-TI engines and dual generators. Her large bridge accommodates a nice size party and has a bimini top for sun protection. A davit and Boston Whaler tender are included.

June/July 2013- This vessel has undergone recent service on the engines and gensets to include complete service, new impellers and belts. The fuel tank has been cleaned and she has fresh fuel. All air conditioners have been full serviced and charged. A **NEW Simrad NSS12 Color GPS Chartplotter** has been installed on the bridge with a **Simrad AP24 Autopilot** with repeater at lower station. A **NEW forward bimini with a combination of hard glass and Isinglass front curtains has been installed on the bridge.** The bridge bench seats have been rebuilt with starboard for extended life and all the wood doors on the bridge cabinetry have been replaced with starboard. Both helm chairs have **NEW Cushions.** A **NEW removable foredeck cover** has been designed and installed.

This classic Motor Yacht by Chris Craft is in vintage condition and is fully functional for coastal cruising and/or live aboard.

---

## Salon

---

- Recessed overhead lights w/dimmers
- 40" Vizio flat screen TV
- Sony component stereo
- Kenwood speakers
- Large sofa
- Coffee table
- End tables – 2
- Blinds for all windows
- Pocket doors to aft deck
- Bar w/ 4 bar stools
- Wet bar w/sink
- Ice maker
- Refrigerator
- Great visibility from the helm to aft
- Custom light fixtures
- Carpeting
- Air conditioned – 16K



---

## Dining Room

---

- Glass top dining table – seats 6
- Full bean dining room
- Air conditioned
- Window blinds
- Iron stone dishware
- Serving bar w/ 3 stools
- End table w/ lamp
- Carpeting
- Recessed overhead lights
- Broom closet
- Storage along portside

---

## Galley

---

- 4 Burner GE electric stove w/ oven
- Instant hot water dispenser- filtered
- Filtered cold water
- Double well stainless steel sink
- Sharp microwave
- Nutone flushmount blender
- Refrigerator w/separate freezer
- Disposal in sink
- Serving bar
- Booth style dinette opposite galley
- Maple wood flooring
- Dinette converts to berth
- Window blinds
- GE electric dishwasher

---

## Master Stateroom

---

- Queen size island berth
- Two full length closets
- Chest of drawers to starboard
- Chest of drawers to port w/ dressing area
- Mini blinds
- Full length wall mirror
- Flat screen TV
- Night tables -2- w/ drawers & storage
- Air conditioned
- Two lamps for night table
- Ensuite head
- Privacy door
- Telephone / intercom
- Recessed overhead lights

## Master Head

---

- Privacy door
- Tub w/ shower doors & shower
- Vanity w/sink
- Vacuflush toilet
- Maple flooring
- Medicine cabinet
- Mini blinds

## Forward Stateroom -2

---

### Forward of galley – Two staterooms w/ accordion style privacy doors

- Over & under berths to port
- Single berth to starboard
- Hanging lockers-2
- Chest of drawers to starboard
- Portholes – port & starboard
- Intercom phone / landline
- Carpeting
- Port & starboard air conditioners
- Reading lights
- Ensuite head forward
- According style privacy doors

## Forward Head

---

- Serves forward staterooms
- Separate shower stall
- Vanity w/ sink
- Electric flush toilet
- Maple wood floor
- Medicine cabinet
- Air conditioned
- Intercom phone / landline

---

## Starboard Stateroom

---

- Twin beds
- Night table w/ drawers
- Private access to head
- Reading lights & lamp
- Privacy door
- Mini blinds
- Full length hanging locker
- Telephone / intercom
- Air conditioned

---

## Port Stateroom

---

- Twin beds
- Night table w/ drawers
- Full length hanging locker
- Full length mirror
- Privacy door
- Reading lights
- Air conditioned

---

## Guest Head

---

- Accessed from companionway or starboard stateroom
- Vanity w/ double sink
- Medicine cabinets
- Maple wood flooring
- Separate shower stall
- Mini blinds
- Full length mirror
- Linen closet

## Helm

---

### Lower Station:

- Two captain chairs
- Dual hydraulic steering
- Dual panish binnacle controls
- Compass
- Port & starboard pilothouse doors
- Ladder to flybridge
- Air conditioned
- Stainless steel helm wheel

## Electronics

---

### Lower Station:

- Data marine depth finder
- Sixtex VHF radio
- Sandpiper speed distance log
- Compass
- VHF radio
- Data marine depth finder
- **NEW Simrad AP24 Autopilot- July 2013**

### Bridge Electronics:

- **ICOM VHF Radio**
- **NEW Simrad NSS12 Color GPS Chartplotter - July 2013**
- **NEW Simrade AP 24 Autopilot - July 2013**
- **Compass**

---

## Electrical System

---

- 12 Volt system – DC
- 120/240 AC system
- Twin 15kW Onan gensets
- 10 Batteries – 2 deep cycle & 4 each 8 volt in series per side
- Battery charger -2
- Bonding system
- Isolation transform
- Distribution panels
- 2-30 Amp shore power cords
- 1-50 Foot 50 amp shore core
- 1-25 Foot 50 amp shore cord
- Shore power connection – port & starboard
- **Both Gensets Serviced - June 2013**

---

## Mechanical Equipment

---

- Air compressor
- Oil exchange system
- 7 Cruisair air conditioners - **Serviced & Charged - July 2013**
- Washer & dryer – separate stack unit

---

## Engine Room

---

- **Complete Engine Service - June 2013**
- Twin 12V71 Detroit Diesel
- Freshwater cooled
- Sea water strainers
- Dual fuel filters
- Oil transfer system
- Upgraded dripless shaft seals
- Blowers
- Engine room lights

---

## Flybridge

---

- Large L-shaped lounge / settee
- **Lounge seat rebuilt w/ starboard - June 2013**
- **New Forward bimini top w/Hardglass/Isinglass front curtains - June 2013**
- Wet bar w/ sink and storage
- Ice maker
- Radar arch
- Bimini top
- Davit for tender
- Tender storage
- Two captain chairs **w/New cushions - June 2013**
- Flybridge control station
- **All cabinet doors replaced w/ starboard - June 2013**

---

## Foredeck

---

- Large molded in seating area w/ cushions
- Wide side decks
- Bow rails w/ teak cap
- Teak toe rail
- Hand rails – port & starboard
- Freshwater wash down
- Windlass capstan
- **NEW Removable foredeck cover - July 2013**

---

## Aft Deck

---

- Accessed from salon through double pocket doors

---

## Hull

---

- Aluminum hull w/ full keel
- Antifouling paint
- Electrolysis monitoring system
- Zinc anodes

---

## Exclusions

---

- Personal Items

---

## Исключения

---

При продаже яхты исключаются личные вещи владельца.

---

## Отказ от ответственности

---

Компания предоставляет описание судна или яхты добросовестно, но не может гарантировать точность этой информации, а также не ручается за техническое состояние. Покупатель должен проинструктировать своих агентов или оценщиков исследовать представленную информацию более подробно, по собственному желанию. Продажа судна или яхты, изменение цены или снятие с продажи будет происходить без предварительного уведомления.

# ФОТОГРАФИИ

Salon



Salon



Salon



Salon



Salon Wetbar/Glass & Bottle Storage



Salon Wetbar/Refrigerator & Icemaker





**Dinning Room**



**Dinning Dish Storage**



**Galley**



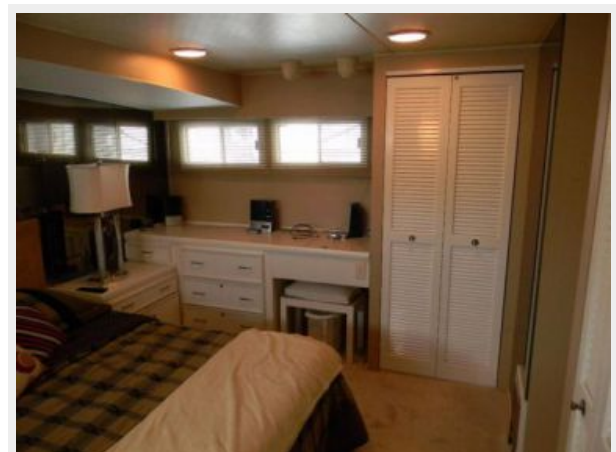
**Galley**



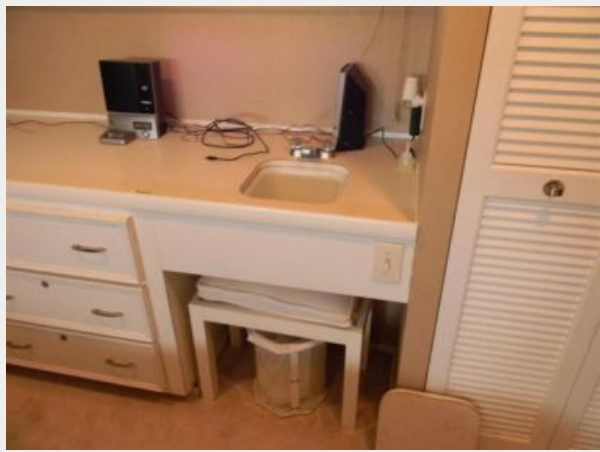
**Master Stateroom**



**Master Stateroom**



**Master Stateroom**



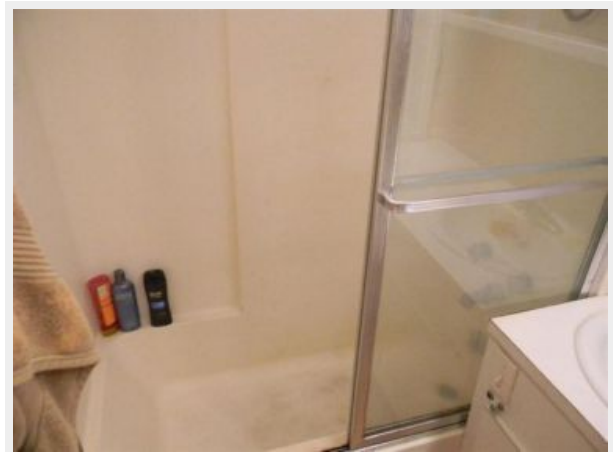
**Master Stateroom**



**Master Head**



**Master Head**



**Forward Stateroom**



**Forward Storage**



**Forward Head**



**forward Head**



**Starboard Stateroom**



**Port Stateroom**





**Guest Head**



**Guest Head**



**Washer / Dryer Separate Stack Unit**



**Helm**



**Helm Seating**



**Lower Station & New Autopilot**



**Electrical System**



**Electrical System**



**Engine Room**



**Engine Room**





**Bilge Storage**



**Bilge Storage**



**Bilge Storage**



**Prop Storage**



**Flybridge**



**Flybridge**



**Flybridge**



**Flybridge Captain Chairs**



**Flybridge-New Bimini & Front Curtains**



**New Bimini & Front Curtains**



**Flybridge Seating**



**Flybridge Wetbar**





**Flybridge**



**Aft Deck**



**Foredeck**



**Foredeck**



**New Foredeck Cover**

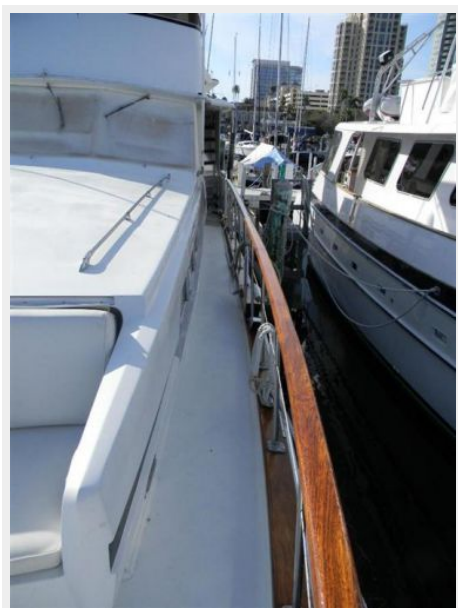


**New Foredeck Cover**





**Side Deck**



**Side Deck**



**New Bottom Paint & Zincs**



**New Bottom Paint & Zincs**



### Tide Ride Boarding Steps



### Davit



### Aft Profile



### Profile



# КОНТАКТЫ

---

Андрей Шестаков (Andrey Shestakov) – ведущий яхтенный брокер отдела продаж яхт и судов компании Shestakov Yacht Sales Inc. Официальный представитель Shestakov Yacht Sales Inc. для русскоговорящих клиентов в центральном офисе компании в Майами/Форт Лодердейл/Флорида/США.

## Контактная информация

---

Email: [andrey@shestakovyachtsales.com](mailto:andrey@shestakovyachtsales.com)

Web: [shestakovyachtsales.com](http://shestakovyachtsales.com)

## Телефоны

---

Краснодарский край: **+7(918)465-66-44**

США, Майами, Флорида: **+1(954)274-4435**

## Время работы

---

Понедельник – Суббота: **9:00 - 21:00**  
EDT

Воскресенье: **Закрито**

## Адрес

---



Harbour Towne Marina, 850 NE 3rd St,  
STE 213, Dania, FL 33004