

50' JEANNEAU SUN ODYSSEY 50 DS — JEANNEAU



Судостроитель: JEANNEAU

Год постройки: 2012

Модель: Крейсерская яхта

Цена: ЦЕНА ЯХТЫ ПО ЗАПРОСУ

Местонахождение: United States

Длина общая: 49' 6" (15.06m)

Ширина: 14' 10" (4.50m)

Макс. осадка: 7' 0" (2.13m)

Купить 50' Jeanneau Sun Odyssey 50 DS — JEANNEAU а также выбрать подходящую вам яхту из нашего каталога яхт вам поможет опытный яхтенный брокер Андрей Шестаков. На сегодняшний день компания Shestakov Yacht Sales Inc. имеет большое количество яхт в собственном списке продаж, а также тесно сотрудничает со всеми крупными яхтенными производителями по всему миру.

Для того чтобы купить яхту 50' Jeanneau Sun Odyssey 50 DS — JEANNEAU а также проконсультироваться по любому вопросу связанному с покупкой, продажей, чартером яхт позвоните по телефону **+7(918)465-66-44**.

ОГЛАВЛЕНИЕ

ОГЛАВЛЕНИЕ	2
ХАРАКТЕРИСТИКИ	4
Обзор	4
Основная информация	4
Размеры	4
Скорость, вместимость и масса	4
Корпус и палуба	4
Информация о двигателе	5
ПОДРОБНОЕ ОПИСАНИЕ	6
Manufacturer Provided Description	6
Additional Description	6
Additional Description	6
Additional Description	7
Additional Description	7
Additional Description	7
Additional Description	8
Additional Description	8
Additional Description	10
Fitted with the Premiere Pack	10
Fitted with the Preference Pack	11
Исключения	11
Отказ от ответственности	11
ФОТОГРАФИИ	12
Manufacturer Provided Image: Port Side View	12
Manufacturer Provided Image: Starboard Side View	12
Manufacturer Provided Image: Under Spinnaker	12
Manufacturer Provided Image: Bow	12
Manufacturer Provided Image: Cockpit	12

Manufacturer Provided Image: Deck Salon	12
Manufacturer Provided Image: Interior	13
Manufacturer Provided Image: Saloon	13
Manufacturer Provided Image: Forward Cabin	13
Manufacturer Provided Image: Aft Cabin	13
Manufacturer Provided Image: 3 Cabin Layout	13
Manufacturer Provided Image: Bathroom	13
Manufacturer Provided Image: 4 Cabin Layout	14
КОНТАКТЫ	15
Контактная информация	15
Телефоны	15
Время работы	15
Адрес	15

ХАРАКТЕРИСТИКИ

Обзор

I look forward to your inquiry and can also provide very useful information for using your new 50DS as a charter business with unique tax advantages.

Основная информация

Тип судна: Крейсерская яхта

Модельный год: 2012

Год постройки: 2012

Страна: United States

Размеры

Длина общая: 49' 6" (15.06m)

Длина по ватерлинии: 43' 0" (13.11m)

Ширина: 14' 10" (4.50m)

Макс. осадка: 7' 0" (2.13m)

Скорость, вместимость и масса

Водоизмещение: 29541 Pounds

Вместимость воды: 162 Gallons

Вместимость сточного бака: 22 Gallons

Объем топливного бака: 63 Gallons

Корпус и палуба

Материал корпуса: Fiberglass

Дизайнер корпуса: Designer: B. Briand /
V. Garroni

Информация о двигателе

Двигатели: 1

Производитель: Yanmar

Модель: 4JH4 TE

Тип двигателя: Inboard

Тип топлива: Diesel

ПОДРОБНОЕ ОПИСАНИЕ

Manufacturer Provided Description

Benefiting from both contemporary interior design by Philippe Briand and a spacious cockpit and stylish deck design by Garroni Design, the Sun Odyssey 50DS delivers comfort and style unmatched by the competition. Inside, a light and airy feel reigns. Visibility is enhanced by the wrap-around Deck Saloon windows and the elongated hull ports. The interior layout of the Sun Odyssey 50DS offers a great deal of flexibility with an owner's cabin aft or forward. The impressive list of standard equipped includes a furling mainsail, long Harken traveller, double anchor rollers with powerful anchor windlass, forward sail locker, dedicated liferaft storage and room for lots of optional equipment.

Additional Description

- 12v alternator output = 80A
- Charge distributor/isolator
- Engine start battery capacity = 110Ah
- Domestic battery bank capacity = 330 Ah
- Positive battery switch for engine bank, positive battery switch for domestic bank and negative general cut-off switch
- 230v shore power inlet with differential breaker
- Electrical panel with 12v breakers, 230v breakers, LCD display with 12v voltmeter,
- 12v consumption meter, fuel and water tank gauges, backlight
- One 230v and 12v plug per cabin, 230v plugs in galley, saloon and nav station

Additional Description

- Galley with double sinks with covers and solid surface countertop chrome plumbing fittings, storage cabinets and drawers
- L-galley to port with glass separator between galley counter and seating area
- Gimballed 2-burner stove with oven with stainless steel protection bar
- Double fridge box, top-loading with 2 opening lids, storage bins, 12v refrigeration and gas

lift for door in large box and compressor

Additional Description

- Yanmar 4JH4 TE 75 HP, 55Kw, turbocharged, latest generation of environmentally friendly engines
- Fully soundproofed engine compartment with engine access behind stairwell and from aft cabin
- Stainless steel propeller shaft
- Fuel/water separator
- Built-in muffler, forced air ventilation and stainless steel exhaust fitting aft
- Fixed 3-blade bronze propeller

Additional Description

- Deck: hand-laid fibreglass deck, ISO glecoat surface, discontinuous balsa block coring, interior fibreglass deck counter mould
- Hull: solid, hand-laid fibreglass, ISO glecoat surface, vinylester resin in outer skin protective barrier coat to protect against osmosis
- Structure: 3rd generation inner fibreglass grid, high-load zones cut out and relaminated, drainage system through structure, special emergency repair zone in keel area

Additional Description

- Outboard engine bracket for stern pulpit
- Anchoring kit Delta anchor 25 kg with 40 meters of 12mm chain and 50 meters of 22mm line
- Teak rubrail for hull protection
- Mooring kit 6 fenders and 3 x 20 meter docklines
- Teak cockpit floor inlay
- Steering wheel covers Sunbrella® Captain Navy blue with zips for easy removal
- Cockpit cushions Sunbrella® Captain Navy cushions for seating area with attachment clips
- Cockpit bimini Sunbrella® Captain Navy with stainless steel bows, retractable with storage cover
- Cockpit sprayhood wide Sunbrella® Captain Navy with vinyl windscreen with zip-out middle window for ventilation, retractable

- Mattress battens under high-density foam mattress for increased comfort
- Cushion to fit over saloon table and support beams to turn standard table into a double berth
- Deluxe saloon table with fixed storage base, inlaid table top, and folding leaves
- 2 removable luxury armchairs with tiedowns for saloon
- Yanmar 4JH4 HTE 110 HP, 82Kw, turbocharged with intercooler, latest generation of environmentally friendly engines
- Max-Prop 3-blade feathering propeller adds performance under power, low-speed manoeuvring, backing and less drag under sail
- Bow thruster 7 HP
- 230v stainless steel microwave
- Generator 5.5kw ONAN 230v located under the liferaft locker in the transom with special access panel, power selector switch and generator panel located at nav station, exhaust separator with below waterline discharge for silent operation

Additional Description

- Teak inlay on seating area, transom and transom steps
- Cockpit lockers 1 locker under bench seat to port and 2 lazette lockers under the helm seats for technical access to steering system
- Cockpit table folding injected fibreglass table with storage, cup holders, bottle holders, stainless steel handrail, courtesy lighting, 12v plug
- Gas locker room for 2 gas bottles with connection to gas system and cut-off valve under stove in the galley
- Liferaft locker under teak grating between helm positions and access from opening transom steps
- Wheels 2 leather-covered steering wheels and compasses at each helm station
- Instrumentation dedicated space for instruments within easy reach of helm positions, room for GPS chartplotter mounted at aft end of cockpit table with easy viewing from each helm
- Engine controls throttle and engine panel includes RPM gauge, warning lights, ignition
- Swim ladder stainless steel folding ladder mounted on swim platform
- Opening transom stairs hinge up for access to liferaft, can be locked closed, access to optional generator door
- Cockpit shower retractable hot and cold water shower with tap
- Anchor locker forward, lockable, room for anchor and tackle, integrated windlass area, holder for windlass handle
- Deep sail locker forward, accessible via opening deck hatch with lock, stainless steel ladder, lighting, access to windlass controls

Additional Description

Forward owner's cabin with central berth

- Double berth, with PREMIUM mattress (2.02 m x 1.6 m)
- Cushioned seat
- Storage under berth
- Large hanging locker
- Vanity in forward cabin with fold-down leather-lined tablette, light and mirror
- Desk/vanity in forward cabin with storage, light, mirror and seat
- Wood and white upholstered panels along hull
- Storage lockers along hull sides with gas lifters and indirect lighting underneath
- Private forward owner's head compartment with stainless steel sink, separate shower with folding plexiglass door, mirrors, towel holder, toilet paper holder, wastebasket, storage cabinet above sink, shower sump with grate and foot switch operated electric drainage pump

Twin forward cabins transformable into single cabin by easily removable longitudinal bulkhead, storage for bulkhead under berth

- Double berths with PREMIUM mattresses (2 x 2.06 x 1.45 m)
- Storage under berth with deep cabinet with shelves and hanging rod in each cabin
- Fabric hull liner
- 2 head compartments forward with sink, shower, clothes hook, mirror, towel holder, toilet paper holder, wastebasket, cabinet above sink and shower sump with grate and electric drainage pump

Aft owner's cabin with reading lights at head of berth

- Central double berth with wood trim and padded headboard, PREMIUM mattress (2.02 x 1.5m)
- Storage compartments along hull with indirect lighting underneath and closed hanging lockers to either side of berth
- Seating to either side of the berth
- Wood and white upholstered panels along hull
- Private aft owner's head compartment with stainless steel sink, separate shower with folding plexiglass door, mirrors, towel holder, toilet paper holder, wastebasket, shower sump with grate and foot switch operated electric drainage pump

Twin aft cabins

- Double berths with PREMIUM mattresses (2.02 x 1.5m)
- Storage compartments along hull with indirect lighting underneath and closed hanging lockers
- Wood and white upholstered panels along hull

- Head compartment accessible from saloon or aft cabin with stainless steel sink, shower, mirrors, towel holder, toilet paper holder, wastebasket and shower sump with grate and foot switch operated electric drainage pump

Navigation station full-function with general electrical panel

- Forward-facing navigation desk with nav seat and storage underneath
- Navigation desk with roll-away top and pass-through for pugs to facilitate the use of a laptop computer
- Leather-wrapped stainless steel handrail and leather-lined pen holder

Saloon with u-shaped seating area to starboard, wrap-around cushions and storage under seating area

- Saloon dining table with fiddles, removable pedestal legs
- Storage cabinets along hull
- Lounge seating to port
- 2 removable storage bins located under floorboards
- Companionway made of laminate and solid wood trim with curved, hinged for access to engine, leather-wrapped handrails to either side

Additional Description

- Bow pulpit open, stainless steel, navigation lights and integrated wiring for lights
- Stern pulpits stainless steel with buoy bracket
- Windlass LEWMAR 1500W combination rope and chain 10mm, vertical-mounted in the anchor locker with above-deck line drum, hand-held remote, manual handle
- Anchor roller double stainless steel fitting with self-launching roller for hands-free launching and retrieving
- Lifelines double level of stainless steel lifelines with PVC coating and stainless steel stanchions
- Lifeline gates opening gates on each side
- Toerail teak profile with integrated stainless steel chocks and drainage for side deck
- Cleats 6 x aluminium mooring cleats
- Handrails sculpted, long stainless steel handrails on coachroof for secure movement forward

Fitted with the Premiere Pack

- Windlass control second windlass control mounted in cockpit with chain counter for easy, short-handed anchoring
- Line cutting collar on shaft for extra protection against fouling
- Extra 110Ah domestic battery
- 60A battery charger, multi-phase
- 12v freezer unit for smaller fridge box with separate compressor
- 3-burner stainless steel stove with thermostatically controlled oven, in place of regular stove/oven unit

Fitted with the Preference Pack

- Teak side decks hand-laid teak side decks
- Teak cockpit table with all the same functions of above, but with teak leaves and top, Sunbrella® Captain Navy cover
- Stainless steel vertical access door to large fridge box, includes wire shelving inside fridge box for increased storage

Исключения

При продаже яхты исключаются личные вещи владельца.

Отказ от ответственности

Компания предоставляет описание судна или яхты добросовестно, но не может гарантировать точность этой информации, а также не ручается за техническое состояние. Покупатель должен проинструктировать своих агентов или оценщиков исследовать представленную информацию более подробно, по собственному желанию. Продажа судна или яхты, изменение цены или снятие с продажи будет происходить без предварительного уведомления.

ФОТОГРАФИИ

Manufacturer Provided Image: Port Side View



Manufacturer Provided Image: Starboard Side View



Manufacturer Provided Image: Under Spinnaker



Manufacturer Provided Image: Bow



Manufacturer Provided Image: Cockpit



Manufacturer Provided Image: Deck Salon



Manufacturer Provided Image: Interior



Manufacturer Provided Image: Saloon



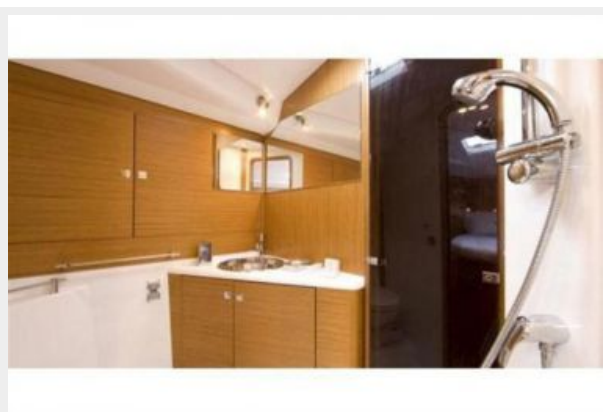
Manufacturer Provided Image: Forward Cabin



Manufacturer Provided Image: Aft Cabin



Manufacturer Provided Image: Bathroom



Manufacturer Provided Image: 3 Cabin Layout



Manufacturer Provided Image: 4 Cabin Layout



КОНТАКТЫ

Андрей Шестаков (Andrey Shestakov) – ведущий яхтенный брокер отдела продаж яхт и судов компании Shestakov Yacht Sales Inc. Официальный представитель Shestakov Yacht Sales Inc. для русскоговорящих клиентов в центральном офисе компании в Майами/Форт Лодердейл/Флорида/США.

Контактная информация

Email: andrey@shestakovyachtsales.com

Web: shestakovyachtsales.com

Телефоны

Краснодарский край: **+7(918)465-66-44**

США, Майами, Флорида: **+1(954)274-4435**

Время работы

Понедельник – Суббота: **9:00 - 21:00**
EDT

Воскресенье: **Закрито**

Адрес



Harbour Towne Marina, 850 NE 3rd St,
STE 213, Dania, FL 33004