

## LANG — SILVERTON



**Builder:** SILVERTON

**Year Built:** 2008

**Model:** Cruiser

**Price:** PRICE ON APPLICATION

**Location:** Singapore

**LOA:** 36' 0" (10.97m)

**Beam:** 13' 10" (4.22m)

**Max Draft:** 3' 3" (0.99m)

**Cruise Speed:** 20 Kts. (23 MPH)

**Max Speed:** 35 Kts. (40 MPH)

Our experienced yacht broker, Andrey Shestakov, will help you choose and buy a yacht that best suits your needs **Lang — SILVERTON** from our catalogue. Presently, at Shestakov Yacht Sales Inc., we have a wide variety of yachts available on our sale's list. We also work in close contact with all the big yacht manufacturers from all over the world.

If you would like to buy a yacht **Lang — SILVERTON** or would like help answering any questions concerning purchasing, selling or chartering a yacht, please call **+1(954)274-4435**

# TABLE OF CONTENTS

TABLE OF CONTENTS	2
SPECIFICATIONS	5
Overview	5
Basic Information	5
Dimensions	5
Speed, Capacities and Weight	5
Accommodations	6
Hull and Deck Information	6
Engine Information	6
DETAILED INFORMATION	7
Remarks	7
Deck and Cockpit	7
Flybridge	7
Salon	8
Galley	8
Master Stateroom	8
Guest Stateroom	8
Guest Head	9
Electronics and Navigation Equipment	9
Safety Equipment	9
Electrical System	9
Mechanical Equipment and Engine Room	9
Exclusions	10
Exclusions	10
Disclaimer	10
PHOTOS	11
Silverton 36 Convertible	11
Port bow	11

Foredeck	11
Port aft	11
Anchor locker	12
Cockpit	12
Transom	12
Flybridge aft	12
Helm	12
Helm	12
Friends enjoying the flybridge	13
Flybridge	13
Salon port	13
Salon	13
Salon Starboard	13
Salon	13
Galley	14
Galley	14
Master queen berth	14
Guest berths	14
Shower	14
Head	14
Kohler Generator	15
Helm electronics	15
Electrical panel	15
Mechanical space forward	15
Stbd engine	15
Port Engine	15
Generator in Lazarette locker	16
Layout	16
Silverton 36 Convertible	16

---

Silverton 36 Convertible	16
CONTACTS	17
Contact details	17
Telephones	17
Office hours	17
Address	17

---

# SPECIFICATIONS

---

## Overview

---

This nice 36' Silverton Convertible is roomy for up to six overnight guests in the master stateroom with centerline queen, a guest cabin with two single bunks and a convertible salon settee. The twin Yanmar diesels provide dependable power to get out to the islands and back and the modern navigation electronics contribute to safe and comfortable cruising. A well designed and well equipped galley makes entertaining easy. The roomy cockpit and flybridge allow for abundant space for socializing and the broad foredeck and deck cushions create a great sunbathing area. Fully registered in Singapore and GST has been paid. This beautiful boat will look very nice in front of your home in Sentosa and fits the requirements for passage through the Sentosa Cove locks. Call for more information about this great family cruiser.

## Basic Information

---

**Category:** Cruiser

**Sub Category:** Sedan Cruiser

**Model Year:** 2008

**Year Built:** 2008

**Country:** Singapore

**Fly Bridge:** Yes

**Cockpit:** Yes

## Dimensions

---

**LOA:** 36' 0" (10.97m)

**Beam:** 13' 10" (4.22m)

**Max Draft:** 3' 3" (0.99m)

**Clearance:** 13' 0" (3.96m)

## Speed, Capacities and Weight

---

**Cruise Speed:** 20 Kts. (23 MPH)

**Max Speed:** 35 Kts. (40 MPH)

**Displacement:** 18500 Pounds

**Water Capacity:** 94 Gallons

**Holding Tank:** 37 Gallons

**Fuel Capacity:** 286 Gallons

---

## Accommodations

---

**Total Cabins:** 2

**Total Heads:** 1

---

## Hull and Deck Information

---

**Hull Material:** Fiberglass

**Deck Material:** Fiberglass Sandwich

**Hull Configuration:** Semi-Displacement

**Hull Color:** White

---

## Engine Information

---

**Engines:** 2

**Manufacturer:** Yanmar

**Model:** 6LPA-STP2

**Engine Type:** Inboard

**Fuel Type:** Diesel

---

# DETAILED INFORMATION

---

## Remarks

---

This beautiful family cruiser is clean and ready to go. With a large flybridge, roomy cockpit, comfortable salon and galley, it can easily accommodate fifteen or more for dockside parties. The boat is laid out well with a well equipped galley, two ample staterooms, a dry bath and a separate shower room. The boat can sleep six in the master stateroom with centerline island queen berth, a stateroom with twin bunks and the salon with a convertible sofa bed. The cockpit is designed for enjoying quiet evenings anchored in a private cove or for fishing with friends. The boat is equipped with all the necessary navigational electronics and amenities to be able to cruise safely and comfortably for island hopping or coastal cruising. The powerful twin diesel engines are proven performers with a long reputation for durability. A Kohler diesel power generator generates all of the power you need to run appliances, lighting and the 2 zone air conditioning.

## Deck and Cockpit

---

- Bow Thruster with flybridge controls
- Anchor windlass with remote control in flybridge
- Anchor locker
- Anchor roller w/flange
- Bow pulpit
- Dockside water connection
- Electrical storage locker in transom
- Transom shower
- Step-thru transom
- Swim platform with ladder
- Sundeck cushions

## Flybridge

---

- Flybridge bimini
- Flybridge controls for bow thruster
- Flybridge controls for anchor windlass
- Flybridge controls for Trim Tabs
- Navigation electronics
- Radio electronics
- Flybridge handrails
- Flybridge seating for six or more
- Flybridge storage
- Radar arch

- Remote spotlight

---

## Salon

---

- AM/FM single CD stereo
- Rear sliding door that opens wide to extend the salon living area into the roomy cockpit
- Rear screen door to keep bugs out
- Opening side windows for great ventilation
- Window blinds
- Dinette storage
- Entertainment center
- Overhead hatch with screen
- 20" Flat screen TV w/DVD player
- Ultraleather settee with cherry dinette table

---

## Galley

---

- Corian countertops
- Microwave/Convection oven
- Amtico flooring
- 2-burner electric range
- Full-size refrigerator/freezer
- Single stainless sink with cutting board cover
- Pressure hot and cold water

---

## Master Stateroom

---

- Centerline queen-size island bed
- Hanging locker
- Lighting
- Under bed storage
- Opening deck hatch with sunscreen

---

## Guest Stateroom

---

- Twin bunk beds
- Reading lamps for each berth
- Storage locker



---

## Guest Head

---

- Corian countertops
- Separate enclosed stall shower
- Electric head
- Exhaust fan
- Storage
- Medicine cabinet
- Single sink basin

---

## Electronics and Navigation Equipment

---

- Compass
- Raymarine E80 Chartplotter / GPS
- Raymarine Tridata speed / depth / log
- Raymarine Ray218E VHF radio
- AM/FM single CD stereo with 2 zones and remote head unit on flybridge
- 20" flat screen TV with DVD player

---

## Safety Equipment

---

- Anchor and rode
- Battery safety switches
- Carbon monoxide detector
- Compass
- Dual horns
- Engine alarms
- Fire extinguishing system
- Parallel start switch
- All required safety equipment

---

## Electrical System

---

- Kohler diesel power generator with sound shield
- Deep cycle Maintenance-free Marine batteries (2 banks)
- Charles 30 amp battery charger
- Dockside electrical connection
- Navigation lights

---

## Mechanical Equipment and Engine Room

---

- Kohler diesel power generator
- Air conditioning - 2 zones
- Acoustic and thermal insulation
- Dripless shaft seals
- Dual lever throttle and transmission controls
- Fuel gauge, electric
- Fuel/water separators
- Holding tank with dockside and overboard discharge
- Hydraulic steering
- Internal sea strainers
- Macerator pump
- Pressurized water system
- Shower sump pump (auto)
- Trim tabs
- Water/holding tank monitors
- Bow thruster
- Oil change system

---

## Exclusions

---

Owner's personal items.

---

## Exclusions

---

Owner's personal belongings.

---

## Disclaimer

---

The Company offers the details of this vessel or yacht in good faith but cannot guarantee or warrant the accuracy of this information nor warrant the condition of the vessel. A buyer should instruct his representatives, agents, or his surveyors, to investigate such details as the buyer desires validated. This vessel or yacht is offered subject to prior sale, price change, or withdrawal without notice.

# PHOTOS

**Silverton 36 Convertible**



**Port bow**



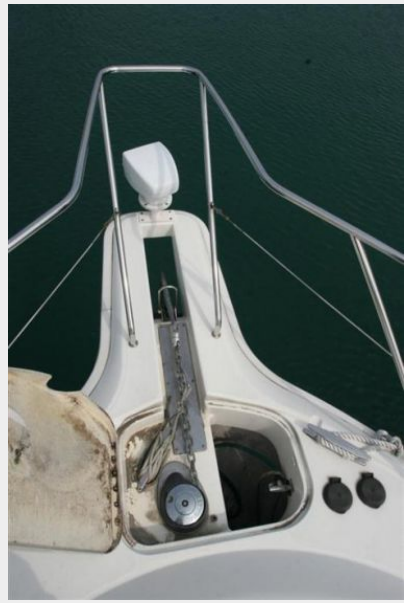
**Foredeck**



**Port aft**



**Anchor locker**



**Cockpit**



**Transom**



**Flybridge aft**



**Helm**



**Helm**





**Friends enjoying the flybridge**



**Flybridge**



**Salon port**



**Salon**



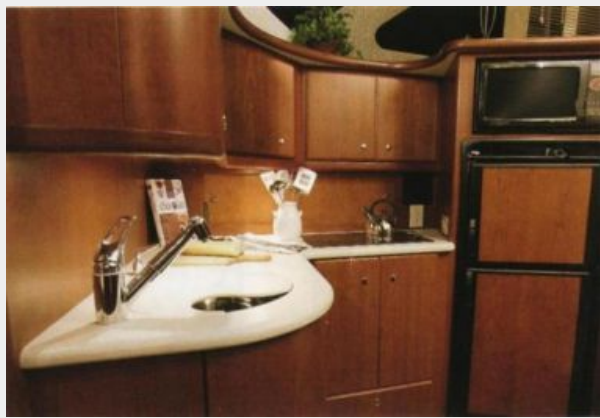
**Salon**



**Salon Starboard**



**Galley**



**Galley**



**Master queen berth**



**Guest berths**



**Head**



**Shower**





**Helm electronics**



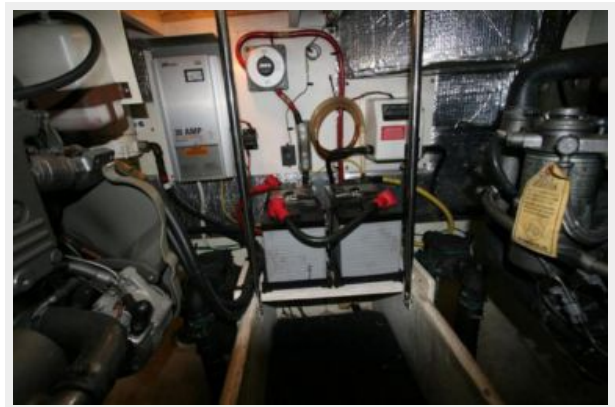
**Kohler Generator**



**Electrical panel**



**Mechanical space forward**



**Port Engine**



**Stbd engine**



### Generator in Lazarette locker



### Layout



### Silverton 36 Convertible



### Silverton 36 Convertible





# CONTACTS

---

Andrey Shestakov, leading yacht broker of the sales department of Shestakov Yacht Sales Inc. Shestakov Yacht Sales Inc., the official representative of the Miami/Fort Lauderdale FL headquarters.

## Contact details

---

Email: [andrey@shestakovyachtsales.com](mailto:andrey@shestakovyachtsales.com)

Web: [shestakovyachtsales.com/en/](http://shestakovyachtsales.com/en/)

## Telephones

---

USA: +1(954)274-4435

## Office hours

---

Monday – Saturday: **9:00 - 21:00** EDT

Sunday: **closed**

## Address

---



Harbour Towne Marina, 850 NE 3rd St,  
STE 213, Dania, FL 33004