

007 — FERRETTI



Builder: FERRETTI

Year Built: 2000

Model: Motor Yacht

Price: PRICE ON APPLICATION

Location: United States

LOA: 94' 0" (28.65m)

Beam: 23' 3" (7.09m)

Min Draft: 5' 8" (1.73m)

Cruise Speed: 24 Kts. (28 MPH)

Max Speed: 27 Kts. (31 MPH)

Our experienced yacht broker, Andrey Shestakov, will help you choose and buy a yacht that best suits your needs 007 — FERRETTI from our catalogue. Presently, at Shestakov Yacht Sales Inc., we have a wide variety of yachts available on our sale's list. We also work in close contact with all the big yacht manufacturers from all over the world.

If you would like to buy a yacht 007 — FERRETTI or would like help answering any questions concerning purchasing, selling or chartering a yacht, please call +1(954)274-4435

TABLE OF CONTENTS

TABLE OF CONTENTS	2
SPECIFICATIONS	5
Overview	5
Basic Information	5
Dimensions	5
Speed, Capacities and Weight	6
Accommodations	6
Hull and Deck Information	6
Engine Information	6
DETAILED INFORMATION	7
VESSEL OVERVIEW	7
MAIN DECK SALON	7
MAIN DECK FAMILY ROOM/MEDIA ROOM/FORMAL DINING ROOM	8
GALLEY	8
AFT DECK	9
UPPER DECK	9
FLYBRIDGE HELM	10
OWNER'S SUITE	10
VIP SUITE	11
GUEST STATEROOMS	11
CREW QUARTERS	11
LAUNDRY EQUIPMENT	12
ENGINE ROOM	12
PILOT HOUSE ELECTRONICS	12
ELECTRICAL SYSTEMS	13
COMMUNICATION SYSTEM	13
DECK and HULL EQUIPMENT	13
GARAGE TENDER	14

REMARKS	14
DISCLAIMER	14
Exclusions	14
Disclaimer	14
PHOTOS	16
Port Passageway	16
Bow	16
Stern	16
Aft Deck	16
Aft Deck	17
Aft Deck	17
Flybridge	17
Flybridge	17
Flybridge	17
Flybridge	17
Flybridge	18
Salon	18
Salon	18
Salon Bar	18
Salon Bar	18
Media Room	18
Media Room	19
Galley	19
Pilothouse	19
Pilothouse	19
Pilothouse	19
Master Stateroom	19
Master Stateroom	20
Master Stateroom	20

Master Stateroom	20
Master Head	20
Master Head	21
Forward Stateroom	21
Forward Head	21
Forward Stateroom	21
Port Guest Head	22
Port Guest Stateroom	22
Starboard Guest Stateroom	22
Guest Head	22
CONTACTS	23
Contact details	23
Telephones	23
Office hours	23
Address	23

SPECIFICATIONS

Overview

Now located at Bahia Mar Marina and available to be previewed through August 25th!

Preliminary Listing please stay tuned for updated details. In 2012 her second owner decide dot invest approximately \$800,000.00 into making 007 a showpiece. Some of the multitude of upgrades include: All new electronics, huge shower with Mosiac tile in the master stateroom, a new enlarged hot tub on the upper deck, custom bar and stainless, imported barstools on the flybridge, fiberoptic LED multi-colored lighting in place of halogen lights throughout the vessels interior and exterior, LED back lit exotic marble tops in the saloon bar and staterooms heads, custom bar in the saloon with commercial icemaker, wine chiller and refrigerator, complete new interior by renewed interior designer, Shelly Di Condina combine to make this the most dramatic, mechanically sound, 94 Ferrett in the fleet. Come and see what over 6 months a firehose attachment on a passionate owners wallet looks like in improvements and upgrades before considering buying another 94 Ferretti. The owner is a serious seller. Bring your buyer to see in person what an \$800,000.00 makeover looks like on the timeless designed 94 Ferretti.

Basic Information

Category: Motor Yacht

Sub Category: Flybridge

Model Year: 2000

Year Built: 2000

Refit Year: 2012

Country: United States

Fly Bridge: Yes

Dimensions

LOA: 94' 0" (28.65m)

Beam: 23' 3" (7.09m)

Min Draft: 5' 8" (1.73m)

Speed, Capacities and Weight

Cruise Speed: 24 Kts. (28 MPH)

Max Speed: 27 Kts. (31 MPH)

Displacement: 196000 Pounds

Water Capacity: 793 Gallons

Holding Tank: 132 Gallons

Fuel Capacity: 3118 Gallons

Accommodations

Total Cabins: 4

Total Berths: 5

Sleeps: 10

Total Heads: 4

Crew Cabin: 1

Crew Berths: 2

Crew Sleeps: 2

Crew Heads: 1

Hull and Deck Information

Hull Material: Fiberglass

Engine Information

Engines: 2

Manufacturer: MTU

Model: 16V2000 M90

Engine Type: Inboard

Fuel Type: Diesel

DETAILED INFORMATION

VESSEL OVERVIEW

The Ferretti 94' Custom Line "007" is a luxury yacht built specifically with entertaining in mind. The main and upper decks, designed for the pleasure of guests and clients, feature large Gucci covered couches, large LCD TV's, and copious custom extras. For example, the new custom marble bar area with wine bar, refrigerator and glass rack are all easily consolidated behind sliding artwork. Four staterooms each provide private, ensuite baths and include an expansive full-beam owner's suite, a full beam VIP stateroom, and two spacious guest staterooms (one with twin berths and the other with a queen berth). A new jacuzzi is just one component of the upper deck's abundant entertainment amenities.

Special Features Include:

- Custom designer interior throughout, new in 2012
- 4000-hour MTU Service, Complete maintenance logs
- Excellent MTU Main Engines
- Garmin Touch Screen Unit on Flybridge Helm Station

MAIN DECK SALON

Aft of the galley, the main deck salon is comparable in size to one of a much larger yacht. A comfortable conversation and entertainment area, the salon is furnished with two opposing curved sofas and coffee tables, handcrafted service bar, custom glass mirror, and an oversized pop-up flatscreen television perfect for viewing movies or the big game. A day head powder room is adjacent to the salon with marble vanity & floor.

- Custom built bar with Onyx top, undercounter lighting and sink, New
- Marble floors and Roman Mosaic decor, New
- U-line wine cooler, marble floor
- 3 Custom Bar Chairs
- Icemaker / U-line refrigerator, New
- New custom headliner with new LED lighting
- Custom artwork sliding doors
- Electric Hunter Douglas Blinds
- New, pop up 37" Panasonic flatscreen LCD TV
- New surround sound with sub 12" speaker
- New custom lamps
- New upholstered sofa with Ultra-White Euro fabric
- New custom wall sconces
- New fiber-optic color changing diamond chandelier
- New carpet with runners

- Harmon Kardon stereo system: salon and aft deck, New
- New upholstery throughout

MAIN DECK FAMILY ROOM/MEDIA ROOM/FORMAL DINING ROOM

Forward of the galley is the family room with a large 60" TV and a new, plush, custom Versace custom sofa. A formal, custom etched-glass dining table seats eight. The view forward through wide, wrap-around front windows is spectacular. However, this room with custom shades and LED lighting transform it into a great movie/media room with all new:

- 60" Samsung 3D LED, New
- Surround sound, 400 disc Blu-ray, New
- Direct TV
- New speakers
- New Versace: dining room chairs and sofa
- New Onkyo sounder system
- Custom sofa
- James Bond Artwork
- LED Fiber Optic Mood Lighting Chandelier
- Color Console on Dimmer
- Custom Decor with Chanel Lamps, Leather Bound
- Cocktail Tables with Storage
- Versace pillows
- New designer carpet

GALLEY

With generous granite countertops, custom-created storage that utilizes every possible space, and quality, high-end appliances and fixtures, the galley is designed to comfortably serve any sized culinary event.

- Miele Oven
- Gaggenau Ceramic 4-Burner Cooktop
- Exhaust vents
- Granite counters, Uba-tuba
- Pantry
- Frigidaire stainless steel side by side refrigerator, New in 2011
- Blinds, New in 2012
- Stereo with CD player
- Pocket doors
- Faucet, New

- Dacor Microwave Oven/Bread Warmer, New
- Piazza Espresso machine
- Bosch Dishwasher
- ISE Trash compactor
- Twin Stainless Steel Sinks with Grohe Faucet
- Smoke detector

AFT DECK

The aft deck, fitted with a very large, curved settee and teak table, is an extension of the main deck entertainment areas. Starboard is direct access to the engine room and steps on both sides lead to the aft platform, the toys, and the garage.

- Stainless Steel & Glass Door
- Hydraulic Fold Down Swim Ladder
- Engine Controls
- Bow Thruster Control
- Steering Controls (stop and start) - Wing Station
- Teak Deck
- Stern Warping Windlasses (2)
- Teak Table with Inlay that includes a custom "007" cover
- Boarding Gates
- Storage Locker with Shower
- Storage Bin behind Seating
- Fresh Water Washing Sink
- Garbage Shoot in side deck
- Engine Room Access
- Overhead lighting and stereo speakers

UPPER DECK

Designed for total outdoor enjoyment, the upper deck offers diverse seating areas. A Bimini top provides shade, while a large sun pad accommodates sun-lovers. Two forward-facing double bench seats allow comfortable viewing while under way. Entertainment amenities include:

- New Covers, Pillows and Lighting
- Teak Decks
- Large Jacuzzi Tub w/ seating, new with LED lighting
- Four (4) marine speakers
- Marble Bar Top End Table with Chairs, New
- Custom Bar Chairs, New
- Davit
- Galley with: Barbecue Grill, Ice Maker, Stainless Steel Refrigerator, Sink, Storage

- New Granite Custom Table

FLYBRIDGE HELM

The flybridge helm with a unique pop-up console to protect the instruments from weather when not in use, mirrors the operational instruments of the pilot house. Included are:

- NEW Garmin touch screen GPS Map 5215, plotter, depth & Speed
- RayMarine ST60, Speed Depth, Compass
- Raytheon RN300 GPS
- Raytheon L760 Bottom Recorder
- Bow Thruster, Mannesmann Rexroth
- MTU RPM Gauges
- Raytheon Ray 430 Hailer
- Guest Spotlight
- Simrad AP20 Autopilot
- VDO Rudder Angle Indicator
- Shipmate VHF (2)
- Single-Lever Rexroth Controls
- Electric Helm Seat

OWNER'S SUITE

This full-beam suite with port lights for natural lighting is accented with light colors and gloss cherry woods. One side is devoted to the Lady of the Ship, with a large walk-in closet and wide vanity. Alcantara ceilings, light carpeting, ample seating, and entertainment center complete this spectacular space. The entertainment center includes SAT TV system with DIRECT TV, new Sony Blu-ray DVD, and Sherwood HiFi. This suite boasts a queen size bed, walk-in closet and abundant storage. The ensuite bath includes a head, full bath, and shower which is all new.

- 42" Toshiba
- Blu-ray DVD player
- Direct TV
- TV on magnet bracket, adjustable
- Motorized tilt on bed
- New Hunter Douglas Blind/Custom Curtains
- All new Headliner and Wall Coverings
- Onkyo Audio Receiver and Surround Sound
- Ensuite Head features Onyx Counters and Glassbowl Sinks
- New designer Carpet

Owner's Head:

- New Marble (Onyx) Countertop and Floor
- New Glass, Block Style Wall Tile Covering
- Glass Bowl Sinks
- Full, Stand Up Double Shower
- Groehn Full Body Shower Tower Spray
- Custom LED Lighting
- Twin Euro Style Faucets above Glass Bowls
- Undercounter Lighting on Onix Marble Tops
- Head and Bidet

VIP SUITE

This beautiful full-beam stateroom features light fabrics and port lights. It is fitted with a queen bed, copious storage, and ensuite bath. An entertainment center offers a SAT TV system with 42" Westing House LCD TV with Blu-ray Stereo/DVD. Additional features include LED mood lighting, custom, new wall fabrics, headboard with new headliner, an all new custom bath, new carpet, soft goods, and love seat.

GUEST STATEROOMS

Queen Guest Stateroom # 1 Queen berth with Pulman berth All new ensuite head with shower Light fabrics and portlights Hanging lockers Storage drawers Full entertainment center offers SAT TV system with a new ETEC 23" flatscreen TV, DVD, and stereo LED Mood Lighting New Designer Carpet

Twin Guest Stateroom # 2 Twin berths New soft goods, sheets and pillows All new ensuite head with shower Light fabrics and portlights Hanging lockers Storage drawers Full entertainment center offers SAT TV system with a new ETEC 23" flatscreen TV, DVD, and stereo LED Mood Lighting Ensuite head features granite floors and counter, full head with bidet, new headliner, and wall coverings New designer carpet

CREW QUARTERS

The crew quarters, forward, include a twin berth captain's cabin, dining area with entertainment center, a crew cabin for two, a private head with shower, and a captain's safe. Kitchen amenities include a microwave, sink and refrigerator. Also included are new televisions, carpet, lighting, head modifications, emergency escape, 23" TV, stereo, 2 flip 15" radios and new mattresses. To maintain the privacy of Owner and guest, crew quarters are accessed from the deck throughout the galley.

LAUNDRY EQUIPMENT

Two (2) Meile Washers and Bosch Dryers

ENGINE ROOM

This immaculate, professionally-maintained, and diamond plate engine room compartmentalizes the mechanical, electrical, and plumbing systems, providing space for each, separate from the main engines. All services are readily available and well marked. Air conditioning compressors and generators are located aft, away from living quarters. Entrances into the engine room is from the deck or from the garage. Additional features include a dive compressor and all new chrome and diamond plating.

PILOT HOUSE ELECTRONICS

- All new leather seating
- Search light
- Furuno Navtec, New
- EPIRB
- Vee-cool window
- Nobeltech Navigation, New
- KVH V3 Tracphone, New
- Furuno Monochrome GPS with WAS receiver, New
- SAT television
- Tracvision
- Satellite weather
- New five (5) camera system with hard drive
- NEC Multi-Sync - EA 192m Camera System, New
- Adjustable helm seat
- Dell computer system with Accusync Monitor, New
- Furuno FCV-291 Color Video depth sounder
- Furuno radar, 64 mile
- Shipmate RS 8300 VHF (2)
- Simrad AP 22 Autopilot
- Leica MZ 420 Navigation System
- Raytheon ST60 Depth, Speed, & Compass
- Bow Thruster, Mannesmann Rexroth
- Raytheon 430 Loudhailer
- Raytheon 611 T GPS
- Sony TV Monitor
- VDO Rudder Angle Indicator
- Sony AM/FM/Disc Player

- Naiad Stabilizer System Multi Sea II
- Four (4) new standard Horizon private channel VHF's with headset
- Panasonic Intercom

ELECTRICAL SYSTEMS

24V, 12V, 220V, and 50/60 cycle electrical systems allow extensive cruising on power systems and connection to shore power in virtually all locations.

- 120-volt electrical
- Kohler Generators (2), 32EOZ @ 32 kw
- 24-volt batteries, 12-volt batteries
- Atlas Shore Power Converter 110-volt 60 cycles into 220-volt and 380-volt 50 cycles
- Main Equipment Fire Alarm System throughout
- 2 Water Heaters, 1500-liter
- 220kw Marine Air System
- Compressors (3), 160,000 BTU/hour
- Water Maker
- Hydraulic Bow Thruster

COMMUNICATION SYSTEM

- SAT Phone KVH Trac Phone
- SSB Transceiver
- 4 VHF Shipmate RS8300
- 2 VHF Portatili IC MI euro
- Motorola Radio HT 750 TM
- New Epson Fax/Copy/Scan/Print

DECK and HULL EQUIPMENT

- Large sunpad on foredeck
- Spotfree Water Softener
- New Window Sun Covers
- Seven (7) Underwater Lights
- New 150kg stainless steel polished anchors
- "007" Nameboards, all colors
- Hydraulic Passerelle
- Dock Lines
- Fenders
- Side-Boarding Ladder with Handrail

- Forward storage compartments (3)
- Twin Anchor Windlass
- Two Docking Line Windlass, aft deck

GARAGE TENDER

The Custom Line 94' has a massive teak-covered deck that opens to near sea level for launching the dinghy and water toys with ease. Underway, it is concealed as part of the transom.

- Novamarine RH 400 Tender with jetdrive, \$3000 service in Jan. 2012
- Yamaha Waverunner Venture 700, 51 hours
- Besenzoni 51 hp Hydraulic Crane, rebuilt
- Dive compressor
- Full swim staircase system - folds down from back of yacht

REMARKS

New price reduction reflects owner's readiness to sell!

A rare vessel in the US market! In 2011 and 2012, "007" underwent a complete transformation. Her all new, stunning interior is like no other. The owner and design team spared no expense, inside and out, to make her a one of kind. Featuring the awesome Ferretti profile and design with luxurious new interior and amenities, she is a MUST SEE YACHT!

DISCLAIMER

The Company offers the details of this vessel in good faith but cannot guarantee or warrant the accuracy of this information nor warrant the condition of the vessel. A buyer should instruct his agents, or his surveyors, to investigate such details as the buyer desires validated. This vessel is offered subject to prior sale, price change, or withdrawal without notice.

Exclusions

Owner's personal belongings.

Disclaimer

The Company offers the details of this vessel or yacht in good faith but cannot guarantee or warrant the accuracy of this information nor warrant the condition of the vessel. A buyer should instruct his representatives, agents, or his surveyors, to investigate such details as the buyer

desires validated. This vessel or yacht is offered subject to prior sale, price change, or withdrawal without notice.

PHOTOS

Bow



Port Passageway



Stern



Aft Deck



Aft Deck



Aft Deck



Flybridge



Flybridge



Flybridge



Flybridge



Flybridge



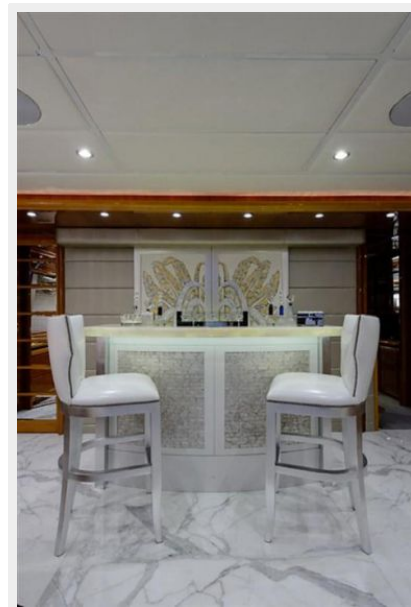
Salon



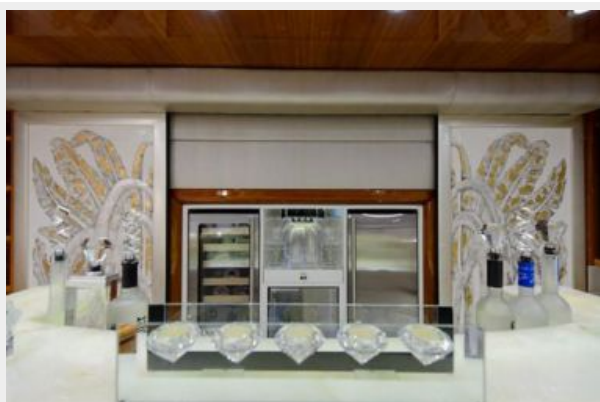
Salon



Salon Bar



Salon Bar



Media Room



Media Room



Galley



Pilothouse



Pilothouse



Pilothouse



Master Stateroom



Master Stateroom



Master Stateroom



Master Stateroom



Master Head



Master Head



Forward Stateroom



Forward Stateroom



Forward Head



Port Guest Stateroom



Port Guest Head



Starboard Guest Stateroom



Guest Head



CONTACTS

Andrey Shestakov, leading yacht broker of the sales department of Shestakov Yacht Sales Inc. Shestakov Yacht Sales Inc., the official representative of the Miami/Fort Lauderdale FL headquarters.

Contact details

Email: andrey@shestakovyachtsales.com

Web: shestakovyachtsales.com/en/

Telephones

USA: +1(954)274-4435

Office hours

Monday – Saturday: **9:00 - 21:00** EDT

Sunday: **closed**

Address



Harbour Towne Marina, 850 NE 3rd St,
STE 213, Dania, FL 33004