

## BUENOS AIRES — RIVIERA



**Builder:** RIVIERA

**Year Built:** 2002

**Model:** Sport Fisherman

**Price:** PRICE ON APPLICATION

**Location:** United States

**LOA:** 48' 0" (14.63m)

**Beam:** 16' 0" (4.88m)

**Min Draft:** 4' 7" (1.40m)

**Cruise Speed:** 24 Kts. (28 MPH)

**Max Speed:** 28 Kts. (32 MPH)

Our experienced yacht broker, Andrey Shestakov, will help you choose and buy a yacht that best suits your needs **Buenos Aires — RIVIERA** from our catalogue. Presently, at Shestakov Yacht Sales Inc., we have a wide variety of yachts available on our sale's list. We also work in close contact with all the big yacht manufacturers from all over the world.

If you would like to buy a yacht **Buenos Aires — RIVIERA** or would like help answering any questions concerning purchasing, selling or chartering a yacht, please call **+1(954)274-4435**

# TABLE OF CONTENTS

TABLE OF CONTENTS	2
SPECIFICATIONS	4
Overview	4
Basic Information	4
Dimensions	4
Speed, Capacities and Weight	4
Accommodations	5
Hull and Deck Information	5
Engine Information	5
DETAILED INFORMATION	6
Introduction	6
Accommodations	6
Salon	6
Galley	6
Skylounge	7
Engine /Mechanical Equipment	7
Deck Equipment	8
Cockpit	8
Exclusions	9
Disclaimer	9
PHOTOS	10
In drydock	10
Cockpit lazarette	10
Engine room access	10
Molded tackle center, sink	10
Passageway fwd	10
A/C units, holding tank	10
Sea strainer, grounding	11

Fuel polishing, Racor	11
Onan gen in hush cover	11
Engine, stbd	11
Engine,port	11
FB aft, port side	11
FB aft, stbd	12
FB overhead	12
FB helm	12
FB fwd, stbd side	12
FB fwd, port side	12
Salon, fwd. galley	12
Salon, aft stbd	13
Salon, aft port	13
Galley, dry storage	13
Micro, range top	13
Combo w/D	13
Galley area	13
Guest SR's head	14
MSR head	14
2nd guest SR	14
Master stateroom	14
Guest stateroom	14
CONTACTS	15
Contact details	15
Telephones	15
Office hours	15
Address	15

---

# SPECIFICATIONS

---

## Overview

---

**BUENOS AIRES is a one-owner, immaculate, low hour boat that has been lightly cruised and fished by her owner. Her enclosed, air conditioned flybridge, just add to her comfort while cruising. She is fully rigged with first class equipment and ready for cruising or fishing. She is in superb condition and will satisfy the most discriminating buyer !!**

## Basic Information

---

**Category:** Sport Fisherman

**Model Year:** 2003

**Year Built:** 2002

**Country:** United States

**Coast Guard #:** 1138620

**Vessel Top:** Enclosed

**Fly Bridge:** Yes

## Dimensions

---

**LOA:** 48' 0" (14.63m)

**Beam:** 16' 0" (4.88m)

**Min Draft:** 4' 7" (1.40m)

**Clearance:** 16' 6" (5.03m)

**MFG Length:** 52' 0" (15.85m)

## Speed, Capacities and Weight

---

**Cruise Speed:** 24 Kts. (28 MPH)

**Cruise Speed RPM:** 2100 Kts.

**Cruise Speed Range:** 450

**Max Speed:** 28 Kts. (32 MPH)

**Max Speed RPM:** 2350 Kts.

**Displacement:** 39600 Pounds

**Water Capacity:** 227 Gallons

**Fuel Capacity:** 940 Gallons

**Fuel Consumption:** 12 Gallons

---

## Accommodations

---

**Total Cabins:** 3

**Total Berths:** 4

**Sleeps:** 6

---

## Hull and Deck Information

---

**Hull Material:** Fiberglass

**Deck Material:** Fiberglass

**Hull Configuration:** Modified V-Hull

**Hull Color:** White

**Hull Finish:** Aluminum

**Hull Designer:** Riviera

---

## Engine Information

---

**Engines:** 2

**Manufacturer:** Caterpillar

**Model:** 3196TA

**Engine Type:** Inboard

**Fuel Type:** Diesel

---

# DETAILED INFORMATION

---

---

## Introduction

---

**BUENOS AIRES** is a one-owner, well equipped, lightly used Enclosed Flybridge Convertible and only available at this time as the teen age members of the family have gone on to college and no longer have summers free to play with Dad. Built in Australia for the owner, she has proved to be an excellent design, being heavily built on a solid fiberglass hull, with a modified V-hull and a short keel. For safety there is a collision bulkhead forward, and two watertight bulkheads in the engine room. Her layout is the standard three stateroom, two head, mid-galley design, with the owners stateroom to starboard and the guest stateroom forward. She features side exhausts, transom door, swim platform, molded tackle center with bait freezer, and engine room access from the cockpit. Special factory upgrades include:

- Salon air conditioning increased to a 24,000 BTU unit
- Flybridge air conditioning increased to a 24,000 BTU unit
- Upgraded flybridge upholstery
- Upgraded Onan generator to a 20 Kw unit
- Sidepower bow thruster

---

## Accommodations

---

The layout has the master stateroom to starboard with an island bed, and the guest stateroom forward, also with a queen bed, and the third cabin is to port featuring upper/lower berths. Both heads have shower stalls, Vacu-flush toilets, and are accessible from the main hallway. The master stateroom has a Clarion satellite stereo unit.

---

## Salon

---

The salon features the mid-level galley forward and to port, with the dinette opposite to starboard. The entertainment center is aft of the dinette, with the large L-shaped lounges aft to port. Both sofas feature storage areas beneath them, with easy access. Other features include:

- Samsung flat screen, 24" TV
- Clarion satellite stereo
- Kenmore wine cooler

---

## Galley

---

The mid level galley is L-shaped with a S/S sink along with various storage cabinets.

Appliances include:

- Norcold refrigerator/ freezer compartment in lower section
- Sharp Carousel microwave/convection
- Princess two burner range
- Fisher & Paykel dishwasher (new 2013)
- Combo-matic washer/dryer with linen storage
- Dry storage beneath galley sole

## Skylounge

---

The enclosed flybridge is truly a "companion friendly", helm area. There are twin helm chairs, and L-shaped dinette with table forward to starboard, and an additional bench seat to port, forward of the small sink and ice maker. The rear enclosure curtains are new in 2013, and can be opened up for access to the rail rod holders, or opened for fresh air when the weather is pleasant. The flybridge is air conditioned and has a separate 24,000 BTU unit for this area. The navigation electronics are easily viewed and include:

- Raymarine E120 12" chartplotter
- Simrad AP 20 autopilot
- 6' Open array radar antenna
- Raymarine L1260 depth
- Raymarine RL70C radar
- Raymarine 430 Loudhailer
- Raymarine 230 full station VHF
- Qualcomm Sat Phone
- Sidepower bow thruster control
- Muir remote anchor windlass control
- Triple windshield wipers with window washers ( All completely new in 2013)
- Twin-Disc Power Command Controls
- Power searchlight
- Engine synchronizer
- Trolling valve control
- Clarion satellite stereo

## Engine /Mechanical Equipment

---

The engine room is accessed from the cockpit and laid out with good access to all of the equipment. Engine room and related equipment include:

- **Twin 660 HP CAT 3196T engines, (600 hrs. AO 4/2012)**
- **Upgraded 20 Kw Onan generator, hush cover, (650 hrs. AO 4/2012)**
- **Trolling valves**
- **IPS fuel polishing system**
- **Upgraded 270 gallon reserve fuel tank forward**
- **Oil change system**
- **Four Cruise-Air air conditioning units**
- **1800 watt Xantrex inverter**
- **Fireboy halon unit in engine room (auto/manual)**
- **Four bladed props (reconditioned in 2013)**
- **Sidepower bow thruster**
- **Trim tabs**
- **Racor fuel filters**

#### **Service and maintenance show:**

- **New shafts & cutlass bearings in 2013**
- **New anti-fouling paint in 2013**
- **Compound/wax of boat in 2013**
- **Both Twin-Disc transmissions are rebuilt in 2014**

## **Deck Equipment**

---

#### **Deck and safety equipment include:**

- **Anchor pulpit with 40# CQR anchor**
- **Muir electric windlass with remote at flybridge**
- **200' of anchor chain**
- **8 man Off-shore life raft (2008)**
- **Sea anchor**
- **Set of spare props**

## **Cockpit**

---

**The cockpit is very large and affords ease of movement whether fishing, cruising, or enjoying the water and water sports. Equipment includes:**

- **Swim platform with swim ladder**
- **Transom door**
- **4 gunnel mounted rod holders**
- **6 rail mounted rod holders on the flybridge**
- **Rupp triple spreader outriggers**
- **Molded tackle center with single bowl sink**



- **Bait freezer in tackle center**
- **Three deck hatches for access beneath the cockpit**
- **Under water stern lighting**
- **Engine room access from the cockpit**

---

## **Exclusions**

---

Owner's personal belongings.

---

## **Disclaimer**

---

The Company offers the details of this vessel or yacht in good faith but cannot guarantee or warrant the accuracy of this information nor warrant the condition of the vessel. A buyer should instruct his representatives, agents, or his surveyors, to investigate such details as the buyer desires validated. This vessel or yacht is offered subject to prior sale, price change, or withdrawal without notice.

# PHOTOS

**In drydock**



**Cockpit lazarette**



**Engine room access**



**Molded tackle center, sink**



**Passageway fwd**



**A/C units, holding tank**



**Sea strainer, grounding**



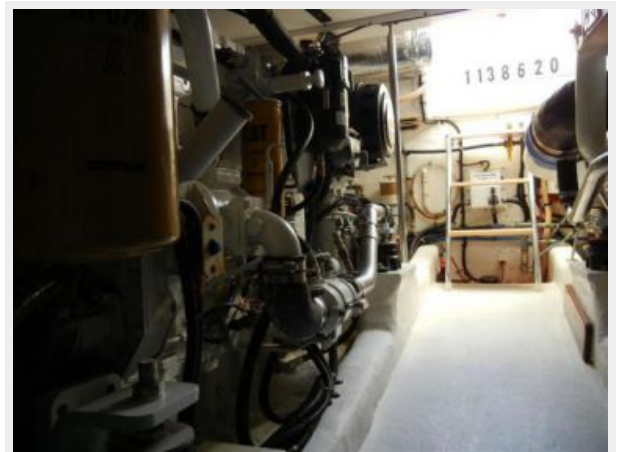
**Fuel polishing, Racor**



**Onan gen in hush cover**



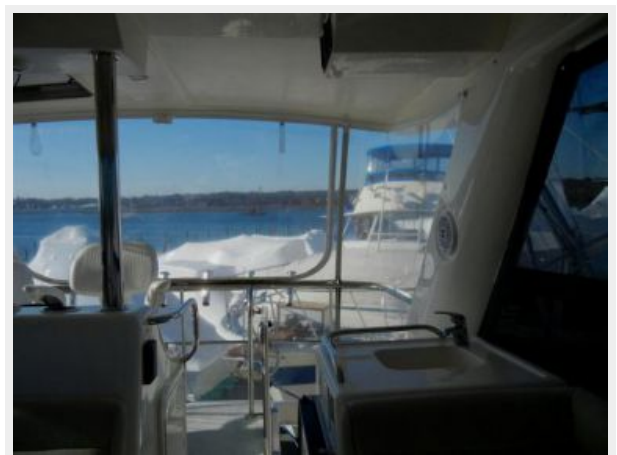
**Engine, stbd**



**Engine, port**



**FB aft, port side**





**FB aft, stbd**



**FB overhead**



**FB helm**



**FB fwd, stbd side**



**FB fwd, port side**



**Salon, fwd. galley**



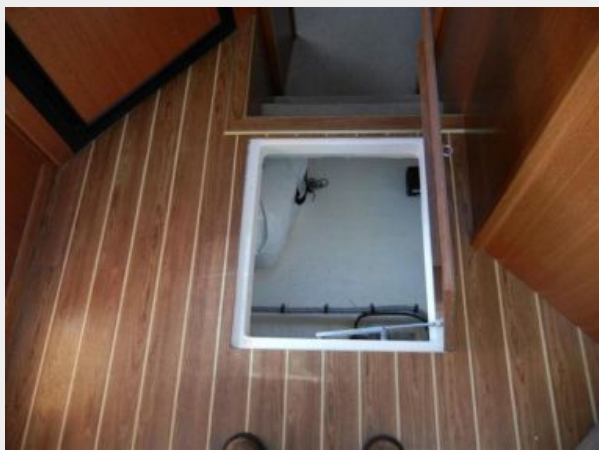
**Salon, aft stbd**



**Salon, aft port**



**Galley, dry storage**



**Micro, range top**



**Galley area**



**Combo w/D**





**Guest SR's head**



**MSR head**



**2nd guest SR**



**Master stateroom**



**Guest stateroom**



# CONTACTS

---

Andrey Shestakov, leading yacht broker of the sales department of Shestakov Yacht Sales Inc. Shestakov Yacht Sales Inc., the official representative of the Miami/Fort Lauderdale FL headquarters.

## Contact details

---

Email: [andrey@shestakovyachtsales.com](mailto:andrey@shestakovyachtsales.com)

Web: [shestakovyachtsales.com/en/](http://shestakovyachtsales.com/en/)

## Telephones

---

USA: +1(954)274-4435

## Office hours

---

Monday – Saturday: **9:00 - 21:00** EDT

Sunday: **closed**

## Address

---



Harbour Towne Marina, 850 NE 3rd St,  
STE 213, Dania, FL 33004