

## SEA JOURNEY — LAZZARA



**Builder:** LAZZARA

**Year Built:** 1997

**Model:** Motor Yacht

**Price:** PRICE ON APPLICATION

**Location:** United States

**LOA:** 76' 0" (23.16m)

**Beam:** 19' 0" (5.79m)

**Min Draft:** 0' 0" (0.00m)

**Max Draft:** 4' 11" (1.50m)

**Cruise Speed:** 21 Kts. (24 MPH)

**Max Speed:** 24 Kts. (28 MPH)

Our experienced yacht broker, Andrey Shestakov, will help you choose and buy a yacht that best suits your needs **SEA JOURNEY — LAZZARA** from our catalogue. Presently, at Shestakov Yacht Sales Inc., we have a wide variety of yachts available on our sale's list. We also work in close contact with all the big yacht manufacturers from all over the world.

If you would like to buy a yacht **SEA JOURNEY — LAZZARA** or would like help answering any questions concerning purchasing, selling or chartering a yacht, please call **+1(954)274-4435**

# TABLE OF CONTENTS

TABLE OF CONTENTS	2
SPECIFICATIONS	4
Overview	4
Basic Information	4
Dimensions	4
Speed, Capacities and Weight	4
Accommodations	5
Hull and Deck Information	5
Engine Information	5
DETAILED INFORMATION	6
Accommodations	6
Features	6
Salon	6
Galley/Laundry	7
Day Head	8
Lower Foyer	9
Master Stateroom	9
Master Head	10
Guest VIP Stateroom/Port	10
Guest VIP Head	11
Office/Study - Forward Lower Area	12
Captains Cabin	12
Crew Quarters - Forward	13
Lower Helm	14
Aft deck	15
Fly Bridge	16
Electronics	16
Deck & Hull Equipment	17

---

Transom Area	17
Mechanical Equipment	18
Exclusions	19
Disclaimer	19
PHOTOS	20
Head Port	23
Head Port	23
Head Starboard	24
Head Starboard	24
Head Forward	25
Head Forward	25
CONTACTS	31
Contact details	31
Telephones	31
Office hours	31
Address	31

---

# SPECIFICATIONS

---

## Overview

---

### Basic Information

---

**Category:** Motor Yacht

**Sub Category:** Flybridge

**Model Year:** 1997

**Year Built:** 1997

**Country:** United States

**Cockpit:** Yes

### Dimensions

---

**LOA:** 76' 0" (23.16m)

**LWL:** 0' 0" (0.00m)

**LOD:** 0' 0" (0.00m)

**Beam:** 19' 0" (5.79m)

**Min Draft:** 0' 0" (0.00m)

**Max Draft:** 4' 11" (1.50m)

**Clearance:** 0' 0" (0.00m)

### Speed, Capacities and Weight

---

**Cruise Speed:** 21 Kts. (24 MPH)

**Max Speed:** 24 Kts. (28 MPH)

**Displacement:** 88999 Pounds

**Water Capacity:** 350 Gallons

**Holding Tank:** 40 Gallons

**Fuel Capacity:** 1700 Gallons

---

## Accommodations

---

**Total Cabins:** 5

**Total Berths:** 1

**Sleeps:** 1

**Total Heads:** 6

**Crew Cabin:** 1

**Crew Berths:** 1

**Crew Sleeps:** 1

**Crew Heads:** 1

---

## Hull and Deck Information

---

**Hull Material:** Fiberglass

**Deck Material:** Fiberglass

**Hull Configuration:** Modified V-Hull

**Hull Color:** White

**Hull Designer:** Dick Lazzara

---

## Engine Information

---

**Engines:** 2

**Manufacturer:** MTU

**Model:** 12V183TE

**Engine Type:** Inboard

**Fuel Type:** Diesel

---

# DETAILED INFORMATION

---

## Accommodations

---

Sea Journey has had just two owners and has original 950 hours. Sea Journey is very well maintained and has an upgraded interior and the upgraded ISIS system. Sea Journey also has had for the last three years the Lazzara Sea Check. This 76' Lazzara is a very popular boat because of its spacious areas like the salon, full galley, country kitchen, and five staterooms. The aft deck and bridge are also very spacious and the walk in engine room has plenty of room around the engines for service. A great boat for entertaining a large number of guests or good size family. This 76' Lazzara has the full walk around deck for easy access to forward deck and for docking. If you are in the market for a large motor yacht, put Sea Journey on your list to see!

## Features

---

Very low original hours

ISIS system updated

Day head

Sea check completed last 3 years

Ungraded interior: flooring, carpet, comforters, pillows – 2009

Updated electronics

Updated fly bridge enclosure

Large walk in engine room

Master stateroom w/large walk in closet

## Salon

---

Designer carpet w/canvas runner

Upgraded décor

Birdseye maple accent throughout

Coffee table

---

U shaped sofa and settee and throw cushions for both

Dinette with 6 chairs

Stairs to master stateroom and both VIP's

Blinds

Overhead lighting

Overhead speakers

Entertainment center including Samsung DVD/VHS player/JVC receiver/ JVC CD player

Samsung 32" flat screen TV w/SAT TV receiver box

Heavy duty SS salon door

Cabinet space for storage

Large windows

110V outlets

Cruisair climate control

Storage for stemware/flatware and dishware forward of dinette

Smoke detector

## **Galley/Laundry**

---

Popular country kitchen layout w/dinette to starboard/Corian top

Custom design flooring – 2009

New refrigerator - 2009

Side doors port and starboard

Pantry

Day head

Lower helm

Electrical panels

Molded steps to bridge w/slide out drawers below

Upgraded upholstered dinette cushions & pillows – 2009

Double stainless steel sink with designer faucet

Kitchen Aid upright microwave/convection oven

Kitchen Aid stove w/4 burner ceramic cooktop above

Kitchen Aid trash compactor

Westinghouse dishwasher

A/C vent

110V outlets

Blinds

Garbage disposal

Overhead storage

Drawer space storage

Storage under sink

Forward windshield w/cover

Overhead lighting

Coby 10" flat screen TV in overhead cabinet facing dinette

Steps down to forward foyer

Cabinet space forward for electronics

## Day Head

---

Kohler designer stand-alone pedestal sink

Kohler designer faucet

110Voutlet

Upgraded toilet



---

Custom wood laminate flooring – 2009

Mirror

Wallpaper

Exhaust fan

## Lower Foyer

---

Carpeted steps down to foyer

GE stack washer/dryer

Large lined closet space

Art display area w/overhead lighting and storage below

## Master Stateroom

---

Full beam master/amidship

King bed

Designer bedding & pillows

Designer carpet – 2009

His/her drawer space & hanging closets

Settee – port/starboard

Nightstands w/designer lamps

Cruisair climate control

Large walk-in closet

24" Flat screen color TV

JVC stereo receiver/JVC CD player & Toshiba DVD/VHS player

Polk audio speakers

Desk w/chair

Port holes w/blinds

Overhead lighting

Reading lights on full mirrored headboard

Telephone outlet

En-suite head

## **Master Head**

---

Molded recessed his/her sinks w/full length Corian countertop

Large Jacuzzi tub w/dual shower heads

Designer faucets on sinks and in shower

Large mirror

Exhaust fan

Shower door to tub

Marble flooring

Storage under sinks

Designer wallpaper

Linen closet behind head

## **Guest VIP Stateroom/Port**

---

Queen bed

Designer bedding & pillows

Large stand up hanging closet w/full length mirror

Drawer space under bed

Mirrored bulkhead

Rope lighting overhead

Carpet

Port holes w/blinds

Overhead lights

Reading lights

JVC 13" color TV

JVC VHS player

JVC stereo with speakers

Cruisair climate control

Smoke detector

En-suite head

## Guest VIP Head

---

Upgraded toilet

Corian style countertop & backlash

Molded recessed sink w/Kohler faucet

110 GFI outlets

Stall shower

Tile floor

Linen closet

Vanity storage

Large mirror

Overhead lighting

Exhaust fan

---

Privacy door

## Office/Study - Forward Lower Area

---

Carpeted steps going down

GE washer/dryer

Desk w/chair

Large settee

Countertop with Birdseye maple inlay

Overhead bookshelf

Furuno weather fax

Phone outlets

110V outlet

Closet

## Captains Cabin

---

Twin bed to starboard

Designer bedding & pillows

Carpet

Drawer storage below bed

Storage cabinets above & below bed

Reading lights

Cruisair climate control

Bomar overhead hatch w/screen and cover

Large hanging locker

Settee

JVC 13" color TV

Stereo w/speakers

Overhead lighting

110V outlet

Phone outlet

En-suite head

### **Captains Head**

Upgraded toilet

Corian style countertop

Designer faucet

Mirrored vanity

Stall shower w/bench seat

Flooring

Overhead lighting

Towel racks

Exhaust fan

110 outlets

## **Crew Quarters - Forward**

---

Upper/lower bunks

Designer bedding & pillows

Carpet

Port windows w/blinds

Overhead lighting

Reading lights

Drawer storage below lower bunk

Small credenza w/storage below

Large hanging locker/full length mirror

Nightstand

JVC 13" color TV

JVC Stereo w/speakers

En-suite head

### **Crew Head/Forward**

Upgraded toilet

Corian style countertop

Designer faucet

Mirrored vanity

Stall shower w/bench seat

Flooring

Overhead lighting

Towel racks

Exhaust fan

110 outlets

## **Lower Helm**

---

Simrad Anritsu radar

ISIS system

Icom IC-M127 VHF radio

Compass

Simrad AP28 autopilot

Bow thruster joystick control

CCTV screen

(2) multi link screens for temp/speed

Furuno FCV-582 color bottom recorder

Northstar 941X GPS/plotter

---

## Aft deck

---

Teak decks

U-line refrigerator w/icemaker-2009

Sink area with pressure water

CCTV

Dinette table w/Corian countertop

Walk through to transom/engine room access

Black Sunbrella canvas covers for all seats & dinette

Overhead speakers

Tide Ride ladder

Port and starboard entranceway

Folding chairs

Ships bell

Walkaround side decks

SS handrails

SS stairs to aft deck

Overhead lighting

Multi color light

---

## Fly Bridge

---

Double Stidd helm chairs

Electronics

Compass

Helm Cover

Hardtop w/full enclosure

Bow thruster

Storage under helm

Remote searchlight

Large L shaped lounge with dinette table

Starboard bar area w/3 bar stools

Dinette and bar tops have corian countertops

Overhead lights in hardtop

Stereo speakers

Chest Freezer

Green Egg BBQ

---

## Electronics

---

ISIS system

Simrad Anritsu radar

Maptech 3 chartplotter

Furuno ED-220 depth finder



Simrad AP 28 autopilot

Icom IC-M127 VHF radio

---

## Deck & Hull Equipment

---

Stainless steel bow rail

Radar arch

Stabilizers

2 Davits (P&S)

Hardtop w/enclosure

Maxwell 3500 windlass

Navigation lights

Anchor light

Tinted windows throughout exterior

Dual trumpet horns

Stainless steel aft gate

SS rails all around and aft

Swim platform

Underwater lights

KVH M5 SAT TV dome

Port & starboard storage compartments forward

Forward sunpad

Bomar hatch

---

## Transom Area

---

Teak decks

Access to engine room

Pod garage doors for PWC/storage

Large storage locker

Rod holders (2)

SS guard rails for aft platform

---

## Mechanical Equipment

---

Twin MTU M183/ 1150HP-950 hours

Twin Onan 20kw diesel generators w/P-1645 S-1290 hours

Sea Recovery 1200 gpd watermaker

(2) 40 amp battery chargers

(1) 20 amp battery charger

Micro commander control boxes

Remote VDO gauges

Racors for engines and generators

Engine and generator oil change system

Work bench

Bonded electrical system

Emergency shut offs

Alarms for engines, bilge and generator

Fireboy automatic & manual fire suppression system

Overhead lighting

Camera system

Cablemaster w/100' line

Guest battery switches

Exhaust mufflers

12V, 24V, 110V, 220V system

Battery isolation

Dive compressor

## **Exclusions**

---

Owner's personal belongings.

## **Disclaimer**

---

The Company offers the details of this vessel or yacht in good faith but cannot guarantee or warrant the accuracy of this information nor warrant the condition of the vessel. A buyer should instruct his representatives, agents, or his surveyors, to investigate such details as the buyer desires validated. This vessel or yacht is offered subject to prior sale, price change, or withdrawal without notice.

# PHOTOS







Head Port



Head Port



Head Starboard



Head Starboard



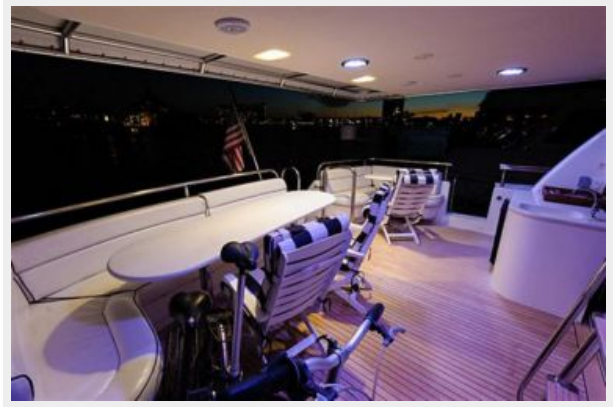


### Head Forward



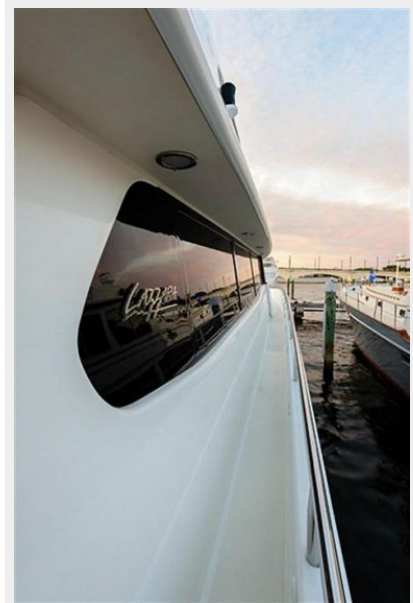
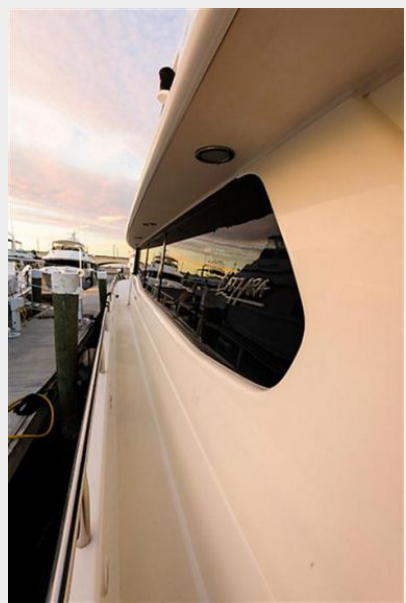
### Head Forward

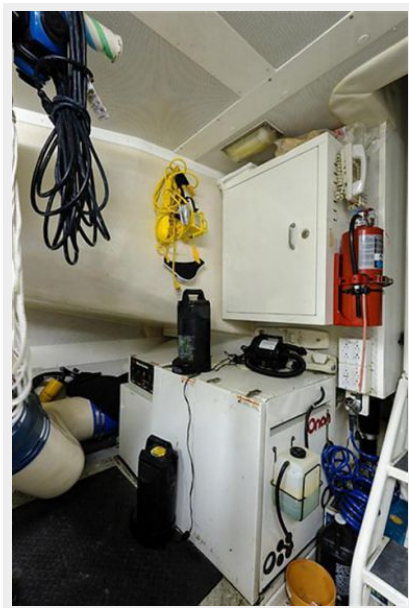
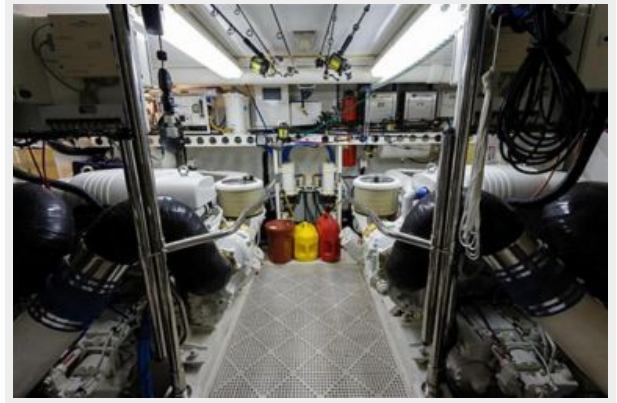












---

# CONTACTS

---

Andrey Shestakov, leading yacht broker of the sales department of Shestakov Yacht Sales Inc. Shestakov Yacht Sales Inc., the official representative of the Miami/Fort Lauderdale FL headquarters.

---

## Contact details

---

Email: [andrey@shestakovyachtsales.com](mailto:andrey@shestakovyachtsales.com)

Web: [shestakovyachtsales.com/en/](http://shestakovyachtsales.com/en/)

---

## Telephones

---

USA: +1(954)274-4435

---

## Office hours

---

Monday – Saturday: **9:00 - 21:00** EDT

Sunday: **closed**

---

## Address

---



Harbour Towne Marina, 850 NE 3rd St,  
STE 213, Dania, FL 33004