

PHATSARA — CUSTOM



Судостроитель: CUSTOM

Год постройки: 2012

Модель: Катамаран

Цена: ЦЕНА ЯХТЫ ПО ЗАПРОСУ

Местонахождение: Thailand

Длина общая: 115' 0" (35.05m)

Ширина: 27' 6" (8.38m)

Мин. осадка: 5' 6" (1.68m)

Крейс. скорость: 20 Kts. (23 MPH)

Макс. скорость: 26 Kts. (30 MPH)

Купить Phatsara — CUSTOM а также выбрать подходящую вам яхту из нашего каталога яхт вам поможет опытный яхтенный брокер Андрей Шестаков. На сегодняшний день компания Shestakov Yacht Sales Inc. имеет большое количество яхт в собственном списке продаж, а также тесно сотрудничает со всеми крупными яхтенными производителями по всему миру.

Для того чтобы купить яхту Phatsara — CUSTOM а также проконсультироваться по любому вопросу связанному с покупкой, продажей, чартером яхт позвоните по телефону **+7(918)465-66-44**.

ОГЛАВЛЕНИЕ

ОГЛАВЛЕНИЕ	2
ХАРАКТЕРИСТИКИ	4
Основная информация	4
Размеры	4
Скорость, вместимость и масса	4
Размещение	5
Корпус и палуба	5
Информация о двигателе	5
ПОДРОБНОЕ ОПИСАНИЕ	6
Vessel Walkthrough	6
Accommodations	6
Salon	7
Dining	7
Master Stateroom	7
Guest Stateroom	7
Galley	8
Audio And Visual Equipment	8
Captains Cabin	9
Crew Quarters	9
Laundry Room	10
Pilothouse	10
Hull	10
Flybridge	10
Aft deck	11
Engine /Mechanical Equipment	11
Electrical System	12
Electronics and Navigational Equipment	12
Deck Equipment	13

Safety And Fire Protection	14
Tenders	14
Features	14
Исключения	15
Отказ от ответственности	15
ФОТОГРАФИИ	16
КОНТАКТЫ	27
Контактная информация	27
Телефоны	27
Время работы	27
Адрес	27

ХАРАКТЕРИСТИКИ

Основная информация

Тип судна: Катамаран	Подкатегория: Крейсер
Модельный год: 2012	Год постройки: 2012
Страна: Thailand	Верх: 2360
Открытая палуба мостика: Да	

Размеры

Длина общая: 115' 0" (35.05m)	Ширина: 27' 6" (8.38m)
Мин. осадка: 5' 6" (1.68m)	Трапы: 39' 4" (11.99m)

Скорость, вместимость и масса

Крейс. скорость: 20 Kts. (23 MPH)	Дальность на крейсерской скорости: 1500
Макс. скорость: 26 Kts. (30 MPH)	Макс. скорость поворота: 2200 Kts.
Дальность на макс. скорости: 800 Kts.	Водоизмещение: 363762.7323 Pounds
Чистый вес: 265 Pounds	Вместимость воды: 1320.86026 Gallons
Объем топливного бака: 4755.096936 Gallons	

Размещение

Всего кают: 3

Всего коек: 14

Спальные места: 14

Всего ком. состава: 5

Каюта капитана: Да

Каюты экипажа: 3

Койки экипажа: 12

Спальных мест экипажа: 12

Комм. состав экипажа: 3

Корпус и палуба

Материал корпуса: Composite Fiberglass

Материал палубы: Teak

Комплектация корпуса: Катамаран

Цвет корпуса: White

Отделка корпуса: Aluminum

Дизайнер корпуса: Incat-Crowther

Дизайнер экстерьера: Incat-Crowther

Дизайнер интерьера: Win Yacht

Информация о двигателе

Двигатели: 2

Производитель: Caterpillar

Модель: C32 ACERT 1800HP

Тип двигателя: Inboard

Тип топлива: Diesel

ПОДРОБНОЕ ОПИСАНИЕ

Vessel Walkthrough

See new website www.power-cat.net This superb Power Catamaran has been designed with large family ownership in mind with extensive accommodation for family, guests and crew (3 main staterooms sleeping 8 guests and many more casual berths).

With a displacement hull she has a very long range and fuel consumption will hardly differ from slower speeds up to the maximum 25 knots +.

The hull and superstructure has been constructed using the very latest technology from High Modulus who inspected the construction at every stage. The yacht was built to DnV standard though was not necessary to be classed due to the owners requirements.

The yacht has extensive redundancy in its main systems with key engineering being duplicated throughout providing great backup and independent security while at sea.

There are enormous entertainment and outdoor areas giving the owners high flexibility in its usage. The massive deck spaces provide a perfect platform for long range cruising, large numbers of guests, fishing and diving and parties/functions.

The owner has already decided to construct a larger yacht and thus she is for sale.

The yacht could easily be converted for charter or luxury dive use.

The yacht has been launched and is undergoing final sea trials.

Accommodations

Being a catamaran, the yacht offers ample space for accommodation and entertainment. The yacht has four decks, divided into various living and utility areas. The design has provided for

ownership by a large family with children and domestic staff. The aft platform is oversized which can be used for various purposes such as fishing, water sports and entertainment. The galley is large and accessible to the main outdoor dining, formal dinner is offered in the saloon dining area with adjacent well equipped pantry. Crew accommodation access is through the starboard passageway, totally separated from the owner/guest area.

Salon

The main deck saloon is well appointed and large with a full length sofa. The starboard side of the saloon is utilized for formal dining. A well equipped pantry is aft of the main saloon on the port side with a day head on the starboard side. Direct and indirect lighting are used throughout the saloon with large windows on each side providing ample light for a relaxing atmosphere.

Pantry

1 x Microwave oven

1 x Fridge/freezer

1 x Wine cabinet

Dining

Dining can take place in the main deck salon or the open area situated on the second deck offering a full view aft of the yacht. This is a unique and very large area not found on other yachts. Attractive teak is used on the decks for maximum appeal and minimum maintenance.

Master Stateroom

The master stateroom consists of a very spacious and well appointed elegant suit forward on the maindeck. The suit is divided into a living area and sleeping area. The head is large with shower/steam cubicle.

Guest Stateroom

The guest staterooms are situated on the maindeck for maximum comfort. Each has ensuite bath with shower/steam cubicle. A spare bed is provided but hidden when not in use. Wood accented decoration is used with accented fabric providing a soft and comfortable atmosphere.

Large windows provide excellent light and external views.

Galley

The galley is fully equipped with modern appliances, fridge/freezers occupy one entire forward wall of the galley providing sufficient storage for long voyages. Two main cooking units are provided for fast and efficient cooking. Oven, microwave etc. are included. The galley is fully air-conditioned and a large extracting fan over the cooking top is routed to the main mast for efficient ventilation.

3 x Oversized Saijo Denki Fridge/Freezer

2 x Cooking units, totaling 6 cooking heads

2 x Microwave ovens

1 x Convection oven

1 x Dish washer

1 x Ice maker 100 Kg/d

1 x Dumb waiter

1 x Extracting fan

Audio And Visual Equipment

Product Model		Quantity	
Bose	Lifestyle 48 IV-Black	1	Home Theater 24
Bose	251 Speaker-White	3 Pairs	

Bose 131 Marine Speaker-White 10 Pairs

Bose UB-20B Wall Bracket-BLK 5

Bose Remote PMCII 1

Crown 660A Amplifier 4

Crown 280A Amplifier 1

Crown 180A Amplifier 1

Crown 1 VCAP 16

Kramer VM-10XL Distributor Am 1

Bose Lifestyle 48 IV supports dvd and Ipod.

Captains Cabin

The Captain's cabin is situated on the bridge deck and immediately behind the bridge for easy access. This cabin is currently set up for 4 crew but can be easily modified as a double / private Captain cabin.

Crew Quarters

The main crew accommodation is on the lower deck starboard side of the twin hull. The main systems monitoring panel is provided in the crew lounge for comfortable observation of the yacht performance.

Laundry Room

1 x Washing Machine

1 x Dryer

1 x Sink

1 x Iron board with iron

1 x Linen Storage

Pilothouse

The bridge is comprehensively fitted out with all necessary communication and navigation systems and a raised observation area with comfortable sofa for guests to enjoy the cruising and operation of the yacht. The design renders maximum viewing area for safe navigation day and night. All controls are readily accessible and require minimum crew.

The helm is not duplicated on the flybridge though a clever remote helm station is situated on the aft main deck for easy close quarters docking/maneuvering.

Hull

The hull is designed to DnV standard (though not classed) and used the very latest High Modulus construction techniques to be found on only one other catamaran in the world. High Modulus were involved in the process at all times and tested each area of fabrication.

Flybridge

The yacht has an enormous flybridge with space for tenders and jet skis. The area is open with a major centre storage console and is superb for functions for many people and can be easily laid out to the owners desire.

Aft deck

The aft deck with sofa seating provides a relaxing atmosphere and easy access to the aft platform. The platform is oversized and the center section of the platform can be hydraulically lifted while underway (to provide safe and fast cruising) and lowered while at rest providing one continuous platform for various activities. Separate guest heads are provided at the aft cockpit. The two main fish freezers are accessible through large opening hatches on the aft deck.

Engine /Mechanical Equipment

The yacht has two main engine rooms, situated in each hull with major systems duplicated in each such as main propulsive engine, gearbox, generator, air-conditioning compressor, power distribution, exhaust and ventilation etc. The engine rooms are equipped with all necessary equipment required for safe cruising.

All systems in the engine rooms are fully accessible for maintenance. Main removal routes are provided at the main ventilation trunks, thus enabling the removal of the main systems from the engine rooms with minimal dismantling. Cabling and piping are designed and installed using military standard criteria for minimal service requirement.

The engines are Caterpillar C32 1800HPs with 2 x Twin Disc Quickshift gearboxes. A bow thruster in each hull is included for super easy maneuvering.

Propellers are 5 bladed Teinbridge with stainless steel rudders.

Steering is hydraulic with an emergency helm.

Ship Systems

Air-condition	2 x Chilled water type systems with 100% duplication
Fuel system	2 x Transfer pumps with manual backup
Hydraulic System	1 x central unit with 4 pumps total 35 Kw.
Water Maker	2 x RO 300 GPD water makers

Toilet/sewage	Head Hunter Inc.
Engine Ventilation	2 x 3 Kw variable speed extracting fans
Bow Thruster	2 x 17 Kw hydraulic Bow Thruster

Electrical System

Generators	2 x Kohler 100Kw 380VAC 3 phase
Power Distribution	TES/SIEMEN
Chargers	3 x 100A Mastervolt
Emergency Nav. charger	1 x 100A Mastervolt
Local Distribution	Mastervolt
Shore Power Box	TES/SIEMEN
Cable	Marine, halogen free
Power System	380 VAC 3 Phase, 220VAC 1 phase, 24 VDC

All lighting and LED lighting by Cantalupi USA, under water lighting by Ocean LED

Electronics and Navigational Equipment

- 1 FURUNO RADAR (NAVNET)
MODEL : 1954C-BB (12KW.) + MU-155C Display 15 “
- 2 FURUNO RADAR (NAVNET)
MODEL : 1934C-BB (4KW.) + MU-155C Display 15”
- 3 FURUNO GPS (NAVNET) (FLY BRIDGE)
MODEL : 1920C-BB + DFF-1 + GP-320B + MU-155C Display 15”
- 4 FURUNO SOUNDER MODEL : FCV-1150 with 1x200Khz and 1x50 Khz Transducers

- 5 FURUNO SATELLITE COMPASS MODEL : SC-50
- 6 FURUNO AUTOPILOT
MODEL : NAVPILOT-700 + JOYSTIC CONTROL
- 7 FURUNO WEATHER FACSIMILE
MODEL : FAX-30 AIS MODEL : FA-50
- 8 FURUNO WND SENSOR MODEL : FI-501
- 9 FURUNO GPS MODEL : GP-32 (Back up system)
- 10 FURUNO LOUD HAILER MODEL : LH-3000

Communication & GMDSS Equipment

- 1 STANDARD HORIZON VHF MARINE MODEL : GX-1256S
- 2 SUPER STAR CB RADIO MODEL : 2400
- 3 FURUNO SSB RADIO
MODEL : FS-2570 + DSC ANTENNA + WHIP ANTENNA
- 4 FURUNO VHF MARINE
MODEL : FM-8800S + 2 x WHIP ANTENNA
- 5 FURUNO NAVTEX RECEIVER MODEL : NX-700B
- 6 ACR EPIRB MODEL : RLB-32 CAT I
- 7 ACR SART MODEL : PATHFINDER 3
- 8 ICOM VHF GMDSS MODEL : IC-GM1600 Complete Set
- 9 Emergency Power Supply for Nav & Comm Systems

Deck Equipment

Anchor Winch 1 x Muir Anchor Winch

Anchors	2 x 150 Kg. CQR Type anchors
Capstans	2 x Muir hydraulic capstans
Mooring	Set of recessed Metal Style Deck Hardware
Cranes watercraft	2 x Opacmare, one in bow for tender and one on flybride for additional

Safety And Fire Protection

- 2 x FM200 fire fighting system for engine rooms
- 2 x KSB fire fighting pumps
- 1 x fire alarm system with zoning alarm
- 8 x Watertight doors with quick locking mechanism
- 2 x 25 person life rafts
- 1 x CCTV System with duplicate control station and hard drive
- 1 x Rescue tender on forward deck
- 1 x Emergency power supply system for Comm & Nav.
- 1 x 20 Million candle search light
- 1 x FLIR remote control infrared camera with bridge display

Tenders

- 1 x space for Tender up to 17 feet with 2.5 tonne launching crane
- 2 x Yamaha 3 persons jet ski with 750 Kg. launching crane

Features

High quality detailed deck plans are available on request.

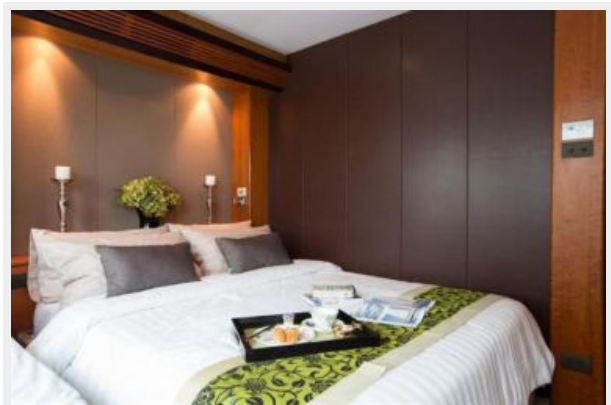
Исключения

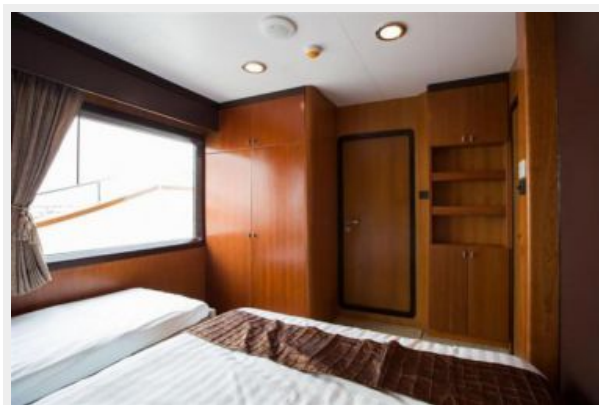
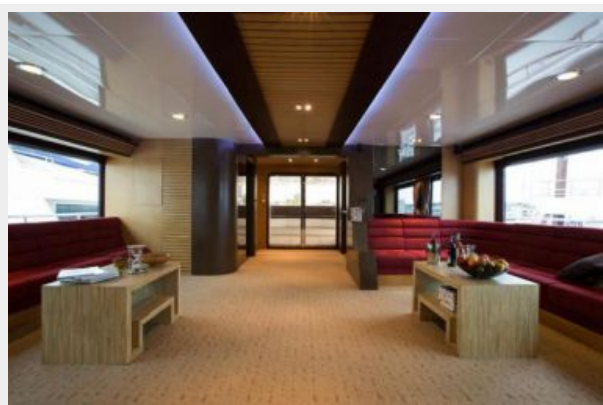
При продаже яхты исключаются личные вещи владельца.

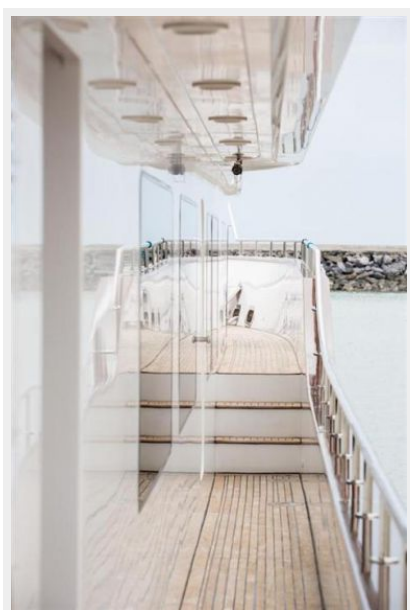
Отказ от ответственности

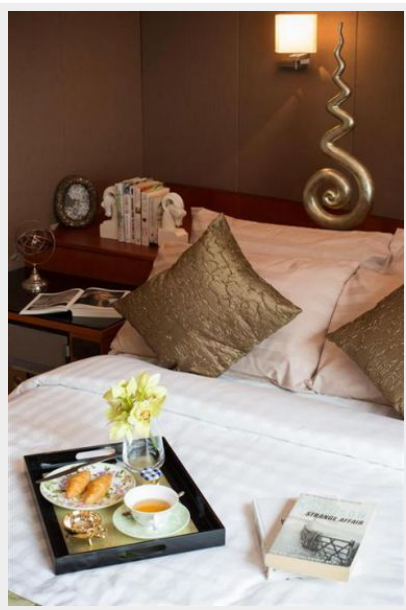
Компания предоставляет описание судна или яхты добросовестно, но не может гарантировать точность этой информации, а также не ручается за техническое состояние. Покупатель должен проинструктировать своих агентов или оценщиков исследовать представленную информацию более подробно, по собственному желанию. Продажа судна или яхты, изменение цены или снятие с продажи будет происходить без предварительного уведомления.

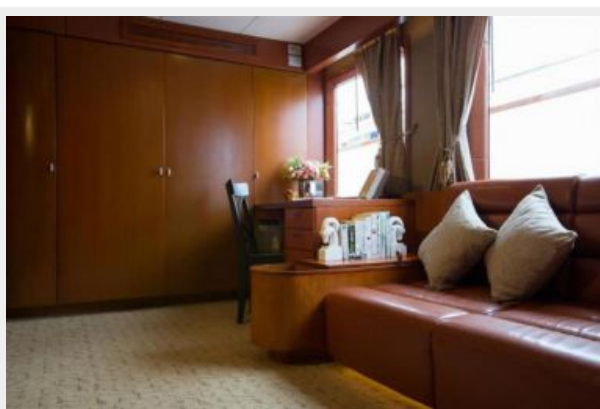
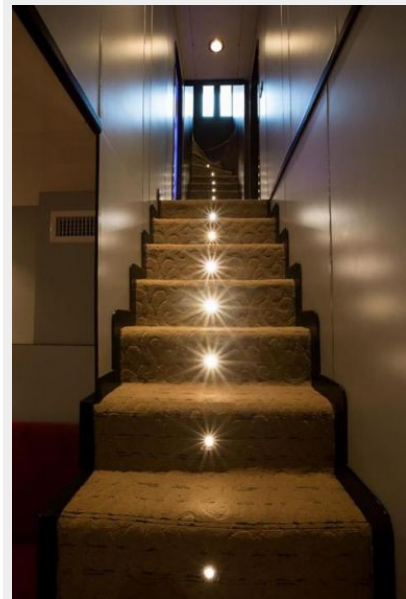
ФОТОГРАФИИ

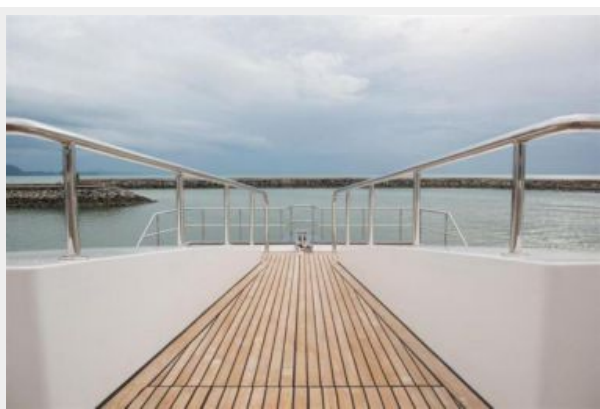
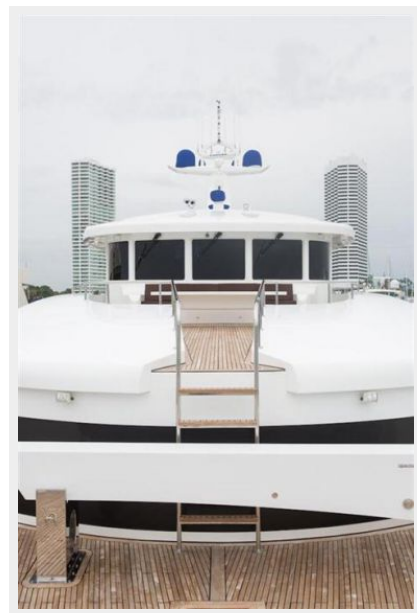




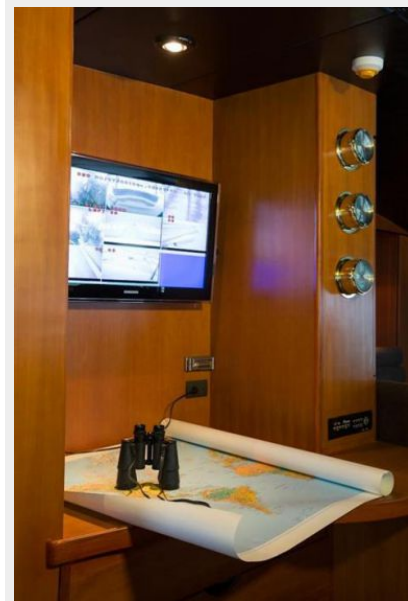


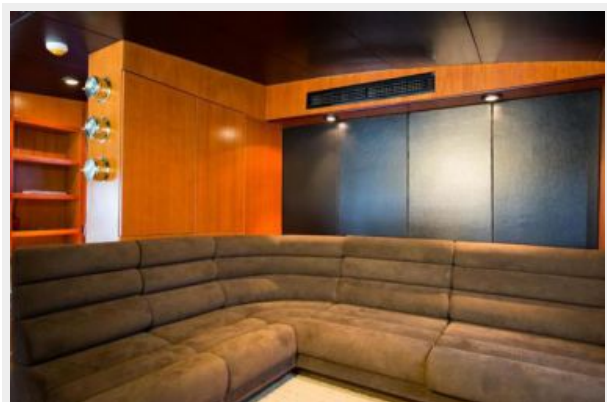


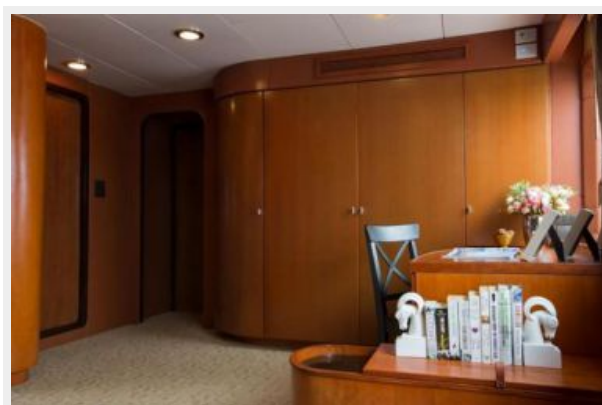
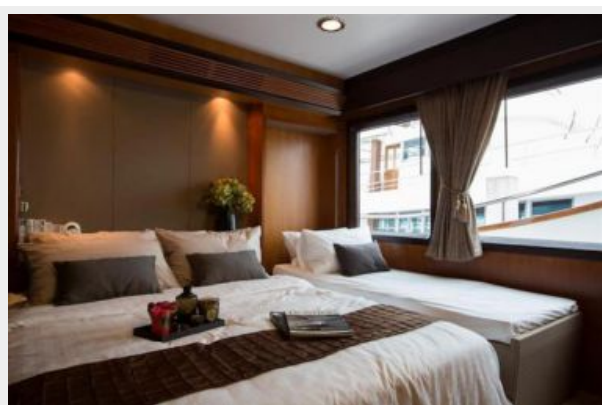














КОНТАКТЫ

Андрей Шестаков (Andrey Shestakov) – ведущий яхтенный брокер отдела продаж яхт и судов компании Shestakov Yacht Sales Inc. Официальный представитель Shestakov Yacht Sales Inc. для русскоговорящих клиентов в центральном офисе компании в Майами/Форт Лодердейл/Флорида/США.

Контактная информация

Email: andrey@shestakovyachtsales.com

Web: shestakovyachtsales.com

Телефоны

Краснодарский край: **+7(918)465-66-44**

США, Майами, Флорида: **+1(954)274-4435**

Время работы

Понедельник – Суббота: **9:00 - 21:00**
EDT

Воскресенье: **Закрито**

Адрес



Harbour Towne Marina, 850 NE 3rd St,
STE 213, Dania, FL 33004