

# SUNSEEKER MANHATTAN 63 — SUNSEEKER



**Судостроитель:** SUNSEEKER

**Год постройки:** 2011

**Модель:** Моторная яхта

**Цена:** ЦЕНА ЯХТЫ ПО ЗАПРОСУ

**Местонахождение:** Thailand

**Длина общая:** 69' 0" (21.03m)

**Ширина:** 17' 0" (5.18m)

**Макс. осадка:** 5' 0" (1.52m)

**Крейс. скорость:** 20 Kts. (23 MPH)

**Макс. скорость:** 30 Kts. (35 MPH)

Купить Sunseeker Manhattan 63 — SUNSEEKER а также выбрать подходящую вам яхту из нашего каталога яхт вам поможет опытный яхтенный брокер Андрей Шестаков. На сегодняшний день компания Shestakov Yacht Sales Inc. имеет большое количество яхт в собственном списке продаж, а также тесно сотрудничает со всеми крупными яхтенными производителями по всему миру.

Для того чтобы купить яхту Sunseeker Manhattan 63 — SUNSEEKER а также проконсультироваться по любому вопросу связанному с покупкой, продажей, чартером яхт позвоните по телефону **+7(918)465-66-44**.

# ОГЛАВЛЕНИЕ

ОГЛАВЛЕНИЕ	2
ХАРАКТЕРИСТИКИ	5
Обзор	5
Основная информация	6
Размеры	6
Скорость, вместимость и масса	6
Размещение	6
Корпус и палуба	7
Информация о двигателе	7
ПОДРОБНОЕ ОПИСАНИЕ	8
Introduction	8
Accommodations	8
Electronics and Navigational Equipment	10
Engine /Mechanical Equipment	12
General Equipment	13
Исключения	14
Отказ от ответственности	14
ФОТОГРАФИИ	15
Hydraulic Swim Platform with Double Shorepower Cord	15
Outside View	15
Crew Quarters	15
Dinghy on Hydraulic Swim Platform	15
Crew Head	16
Aft Deck	16
V8 100 hp MAN Engine	16
Aft Deck Settee	16
Side Deck	17
Side Deck	17

Foredeck	17
Foredeck	17
Flybridge Looking Aft	17
Flybridge Settee and Table	17
Flybridge Looking Forward	18
Flybridge BBQ and Wetbar	18
Flybridge Helm Station	18
Flybridge Helm Station	18
Salon	18
Salon Starboard Side	18
Salon Portside	19
Galley and Dinette	19
Galley	19
Dinette	19
Lower Helm Station	19
Wine Cooler and Electrical Panel	19
Hallway Looking Forward into VIP Cabin From Master Stateroom	20
Master Stateroom	20
Master Stateroom	20
Master Stateroom	20
Master Head	21
Guest Cabin	21
Guest Cabin	21
VIP Cabin	21
Night Lighting	22
VIP Cabin	22
Night Lighting	22
КОНТАКТЫ	23
Контактная информация	23

---

Телефоны	23
Время работы	23
Адрес	23

---

# ХАРАКТЕРИСТИКИ

---

## Обзор

---

A stunning example of Sunseeker's design capability, this newly near Manhattan 63 Pilothouse Motoryacht is in immaculate condition and ready to go cruising. She features an interior with 4 staterooms and 3 heads, along with crew quarters with head for 2 crew, fully equipped galley, lower helm, and very spacious salon all done in American walnut with satin finish and artfully done interior decor.

The exterior features wide walkarounds with plenty of stainless steel safety handrails and nonskid decking, a generous amount of teak decking on the aft deck and swim platform, and a very spacious flybridge with upper steering station, electric BBQ and cold storage and loads of sunpad, C shaped settee, and lounging areas.

She comes loaded with equipment including MAN V8 1,000 hp engines that allow her to travel up to 30 knots, 20 kW generator, watermaker, electronic engine controls, bow thruster, full electronics package, hydraulic swim platform with Williams jetdrive tender, air conditioning throughout, stereo/TV entertainment system throughout, and canvas package. The hull is the classic Sunseeker deep blue color as is the canvas.

This yacht is very cleverly designed, inside and out, and has many little features that only become noticeable after much time is spent aboard. These things range from how the shore power cord is tucked away in the starboard side bulwark, to how the washdowns are done, to the subtle way the exterior lighting is placed and installed, to all the little storage areas that exist almost hidden from view. This is a yacht that needs to be seen and experienced to be fully appreciated.

Call now for an appointment to view.

## Основная информация

Тип судна: Моторная яхта

Подкатегория: Pilothouse

Модельный год: 2011

Год постройки: 2011

Страна: Thailand

Открытая палуба мостика: Да

## Размеры

Длина общая: 69' 0" (21.03m)

Длина палубы: 63' 0" (19.20m)

Ширина: 17' 0" (5.18m)

Макс. осадка: 5' 0" (1.52m)

## Скорость, вместимость и масса

Крейс. скорость: 20 Kts. (23 MPH)

Крейсерская скорость поворота: 1850 Kts.

Макс. скорость: 30 Kts. (35 MPH)

Водоизмещение: 77161.7917 Pounds

Вместимость воды: 198.129039 Gallons

Объем топливного бака: 924.602182 Gallons

Расход топлива: 68.68473352 Gallons

## Размещение

Всего кают: 4

Всего коек: 6

Спальные места: 8

Всего ком. состава: 3

Каюты экипажа: 1

Койки экипажа: 2

Спальных мест экипажа: 2

Комм. состав экипажа: 1

## Корпус и палуба

---

**Материал корпуса:** Fiberglass

**Материал палубы:** Fiberglass Sandwich

**Комплектация корпуса:** Planing

**Цвет корпуса:** Deep Blue

**Отделка корпуса:** Aluminum

**Дизайнер корпуса:** Sunseeker

## Информация о двигателе

---

**Двигатели:** 2

**Производитель:** MAN

**Модель:** V8 Model D2868LE423

**Тип двигателя:** Inboard

**Тип топлива:** Diesel

---

# ПОДРОБНОЕ ОПИСАНИЕ

---

## Introduction

---

A stunning example of Sunseeker's design capability, this newly near Manhattan 63 Pilothouse Motoryacht is in immaculate condition and ready to go cruising. She features an interior with 4 staterooms and 3 heads, along with crew quarters with head for 2 crew, fully equipped galley, lower helm, and very spacious salon all done in American walnut with satin finish and artfully done interior decor.

The exterior features wide walkarounds with plenty of stainless steel safety handrails and nonskid decking, a generous amount of teak decking on the aft deck and swim platform, and a very spacious flybridge with upper steering station, electric BBQ and cold storage and loads of sunpad, settee, and lounging areas.

She comes loaded with equipment including MAN V8 1,000 hp engines that allow her to travel up to 30 knots, 20 kW generator, watermaker, electronic engine controls, bow thruster, full electronics package, hydraulic swim platform with Williams jetdrive tender, air conditioning throughout, stereo/TV entertainment system throughout, and canvas package. The hull is the classic Sunseeker deep blue color as is the canvas.

This yacht is very cleverly designed, inside and out, and has many little features that only become noticeable after much time is spent aboard. These things range from how the shore power cord is tucked away in the starboard side bulwark, to how the washdowns are done, to the subtle way the exterior lighting is placed and installed, to all the little storage areas that exist almost hidden from view. This is a yacht that needs to be seen and experienced to be fully appreciated.

Call now for an appointment to view.

## Accommodations

---

This yacht is entered via the swim platform which hydraulically lowers to launch the dinghy and is covered in teak decking. The dinghy is mounted with removable chocks which frees the swimplatform for use when the dinghy is deployed. There is also the usual fold away swim ladder and various tie down cleats and chocks. The aft end and top of the transom contains a



storage locker and to starboard is a large door for access from the swim platform to the crew quarters below in the lazarette area, consisting of twin side by side bunks with several drawers, lockers, storage shelves, and curtain covered windows that look out onto the swim platform and a head with shower. One of the crew quarter lockers contains a large icemaker.

From the swim platform, the aft deck area is up three steps from the swim platform and is accessed through port and starboard transom passageways with stainless steel transom doors. There is access to the side decks on both the port and starboard sides. Aft is a large settee and forward is the stainless steel and glass sliding door entry to the salon. In front of the salon door and through a deck hatch is the entrance to the engine room. The entire aft deck is covered in teak decking and 6 LED deck lights light the floor at night. Located in and around the aft deck/swim step area is the hot and cold fresh water shower, shorepower locker, various deck lights and switches, cleats, and storage lockers. The area is spacious and comfortable for lounging while at anchor or underway.

Moving forward and up one step from the aft deck along the side decks covered in gel coated nonskid and surrounded by the stainless steel handrail leads to the foredeck area. This is a very large area containing the sunpad with adjustable backrest, cup holders, anchor, anchor windlass and controls, fresh water washdown, stereo speaker jacks, and bow pulpit. Outboard of the sunpad on both port and starboard sides are two large storage lockers. Additionally, outboard of the anchor windlass on both port and starboard sides are access hatches to the very large and deep anchor chain locker. This is another very comfortable area to sit while underway or at anchor. There is a large round deck hatch forward of the sunpad which allows light and ventilation into the VIP cabin below. The front windows feature three stainless steel windshield wipers. The window itself is covered with a grey canvas when the yacht is not in use. The large side windows are framed with stainless steel.

The flybridge is accessed via an 8 step stairway with teak covered steps and through a companionway with a hinged fold down Lexan cover. Under the stairway is a large storage locker that opens onto the aft deck. The far aft end of the flybridge deck contains a large C shaped settee with a fold up teak table that wraps around the port side. Overhead and just aft of this settee is the radar arch containing the usual assortment of antennas. Forward and to port is another C shaped settee with a large sunpad with cup holders forward that wraps around in front of the starboard side helm station and up to the Plexiglass and stainless steel rimmed Venturi windscreen. In between the fore and aft settee is a locker containing more cold storage. These settees all have storage space under them. Opposite of this settee is a console housing the electric BBQ, wetbar, refrigerator, and icemaker. Forward of this console is the upper helm station with two bucket seats and a white leather covered steering wheel up against the forward edge of the BBQ console. This area is clearly meant for entertaining large groups of

people in comfort. The entire flybridge area is covered with a dark blue Bimini top. The nonskid deck is covered with a beige colored carpet and there is plenty of LED floor lighting.

From the aft deck, the yacht interior is entered through a stainless steel and glass sliding door. This sliding door is covered on the inside with a curtain. To port is a gray upholstered C shaped settee with upholstered bolster and removeable wooden tray that functions effectively as a table. To starboard is another gray upholstered settee behind which is a Samsung 55" lift up LCD TV. Aft of this settee is the entertainment center/wine glass locker and countertop table. The floors throughout are covered in luxurious beige carpet and the interior decor features American walnut paneling and trim along with white vinyl covered walls throughout with padded vinyl headliners. The feeling is bright yet very warm. The galley and pilothouse is up one step from the main salon. The very well equipped galley is to port and features modern appliances including a stove, convection microwave with grilling feature, single round sink, refrigerator, double drawer freezer, lots of overhead storage and drawers, and black Corian countertops. Opposite the galley is a large Walnut dining table with a large L shaped settee to starboard and three chairs. The table is open to the galley. Forward of the dining table is the lower helm station with Bezonsni electric helm chair. To starboard of the helm station is an electrically operated aircraft style pilothouse door that allows access to the exterior. This entire area from salon door to helm station has a very open and spacious feel to it yet is very functional.

Forward of the galley is the lighted stairway that leads below decks. The stairway is divided into two landings; one down three steps and about halfway down where the wine cooler and AC/DC electrical panel are installed and another down a further 4 steps to the bottom of the steps. The steps are solid walnut and there is an attractive stainless steel handrail providing safety on the way down. This bottom landing is about midships. Aft is the master stateroom with ensuite, forward is the VIP cabin with ensuite and the guest cabins are to port and starboard. The starboard guest cabin has twin side by side single berths and an ensuite with an entry door to the hallway and the port guest cabin has over/under bunks and shares the head with the starboard side cabin and is located essentially under the stairway from above. All the heads feature Tecma toilets, separate enclosed showers, black Corian countertops, and modern round bowl sink and are very functional. All the cabins have air conditioning, lot of lockers and drawers, TV/entertainment systems, and attractive decor. The full beam master stateroom is amidships and features a centerline king bed with his and her nightstands, large 37" TV, several large drawers, countertops, ensuite behind the berth on the starboard side, and a full walk-in closet behind the berth on the port side. Classic Sunseeker portholes are mounted in the hull on both port and starboard sides of the stateroom that let in a surprising amount of light. The VIP cabin is up one step from the landing and features an island queen berth.

---

## Electronics and Navigational Equipment

---

## Flybridge Helm Station

Raymarine E120|W Hybridtouch 17" LCD chart/plotter mutli function monitor for GPS and radar displays

Raymarine ST 6002 autopilot

Raystar 4kW 48 nm radar

Raystar 125 GPS

Raymarine ST60+ Tridata

Raymarine 240E VHF radio

Fusion Sound system control

Jabsco searchlight control

MAN/ZF electronic engine controls

Engine instruments and control panels

Sidewater bow thruster control

Rudder angle indicator

Fuel level indicator

Trim tab controls

## Lower Helm Station

Raymarine E120|W Hybridtouch 17" LCD chart/plotter mutli function monitor for GPS and radar displays

Raymarine ST 6002 autopilot

Raystar 4kW 48 nm radar

Raystar 125 GPS

Raymarine ST60+ depth and speed instruments

Raymarine 240E VHF radio

Fusion Sound system control

Jabsco searchlight control

MAN/ZF electronic engine controls

Engine instrument and control panels

Circuit breaker switches

Dolphin fire and bilge alarm panel

SeaFire fire extinguishing system control

Sidepower bow thruster control

Rudder angle indicator

Fuel level indicator

Water level indicator

Trim tab controls

Compass

Bezonzoni luxury electric helm chair

Cup holders

Large paper chart holder

---

## **Engine /Mechanical Equipment**

---

Twin MAN V8 735 kW/1000 hp main engines

ZF transmissions

MAN/ZF electronic engine controls

Bronze 5 blade propellers

Kohler 20 Kw 50 Hz generator

Racor fuel filters with WASP fuel conditioning system

Halon fire fighting system

Hot water heater

Lewmar anchor windlass with remote control

Electrically operated aircraft style lower helm pilothouse door

Engine driven power steering

## General Equipment

---

Sidepower Bow Thruster

9 units of air conditioning throughout all interior areas

Williams 385 jet drive tender with 95 hp engine for speeds up to 40 kts

Hydraulic lifting swim platform with teak deck

Corian countertops throughout

Exterior LED floor lighting with dimmer control

2 stainless steel transom gates

Freshwater hot and cold water shower on transom

Freshwater anchor washdown

Lewmar electric windlass with foot operated controls and remote controls at steering station and with 90 meters of anchor chain with 35 Kg CQR Plow anchor

Wasp fuel filtering and conditioning system

Teak decks on swim platform, aft deck, and steps leading to flybridge

Waeco flybridge icemaker

Waeco flybridge refrigerator

Flybridge extra cooled box forward of portside settee

Flybridge Gaggero 220V electric BBQ and wetbar with hot and cold freshwater outlet and sink

MAN/ZF electronic engine controls

Bezenzoni electric lower helm chair

Euro Kera electric 3 burner glasstop stove in galley

Sharp Jetconvection double grill microwave

Frake single stainless steel galley sink

Starboard side electrically operated aircraft style door leading to exterior from lower helm station

3 stainless steel windshield wipers

Tecma flush toilets in all heads

Wine cooler installed in hallway

Bose Lifestyle surround sound entertainment system with Fusion zone control

Underwater lights

Icemaker installed in crew quarters

6 lifejackets

Jabsco searchlight

Water filtration for all vessel water

Watermaker

Stainless steel exterior window frames

Dual trumpet horn

Double 220V/50 amp shorepower cord hookup with double shorepower cables

---

## Исключения

При продаже яхты исключаются личные вещи владельца.

---

## Отказ от ответственности

Компания предоставляет описание судна или яхты добросовестно, но не может гарантировать точность этой информации, а также не ручается за техническое состояние. Покупатель должен проинструктировать своих агентов или оценщиков исследовать представленную информацию более подробно, по собственному желанию. Продажа судна или яхты, изменение цены или снятие с продажи будет происходить без предварительного уведомления.

# ФОТОГРАФИИ

**Outside View**



**Hydraulic Swim Platform with Double Shorepower Cord**



**Dinghy on Hydraulic Swim Platform**



**Crew Quarters**



**Crew Head**



**Aft Deck**



**Aft Deck Settee**



**V8 100 hp MAN Engine**





**Side Deck**



**Side Deck**



**Foredeck**



**Foredeck**



**Flybridge Looking Aft**



**Flybridge Settee and Table**



**Flybridge Looking Forward**



**Flybridge BBQ and Wetbar**



**Flybridge Helm Station**



**Flybridge Helm Station**



**Salon**



**Salon Starboard Side**



**Salon Portside**



**Galley and Dinette**



**Galley**



**Dinette**



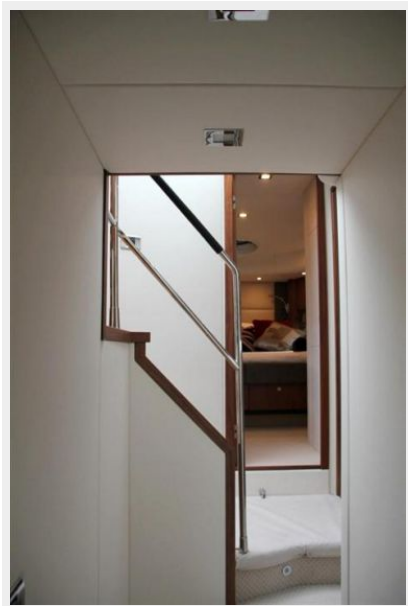
**Lower Helm Station**



**Wine Cooler and Electrical Panel**



### Hallway Looking Forward into VIP Cabin From Master Stateroom



### Master Stateroom



### Master Stateroom



### Master Stateroom



### Master Head



### Guest Cabin



### Guest Cabin



### VIP Cabin



**VIP Cabin**



**Night Lighting**



**Night Lighting**



# КОНТАКТЫ

---

Андрей Шестаков (Andrey Shestakov) – ведущий яхтенный брокер отдела продаж яхт и судов компании Shestakov Yacht Sales Inc. Официальный представитель Shestakov Yacht Sales Inc. для русскоговорящих клиентов в центральном офисе компании в Майами/Форт Лодердейл/Флорида/США.

## Контактная информация

---

Email: [andrey@shestakovyachtsales.com](mailto:andrey@shestakovyachtsales.com)

Web: [shestakovyachtsales.com](http://shestakovyachtsales.com)

## Телефоны

---

Краснодарский край: **+7(918)465-66-44**

США, Майами, Флорида: **+1(954)274-4435**

## Время работы

---

Понедельник – Суббота: **9:00 - 21:00**  
EDT

Воскресенье: **Закрето**

## Адрес

---



Harbour Towne Marina, 850 NE 3rd St,  
STE 213, Dania, FL 33004