

VICEROY I — SUNSEEKER



Builder: SUNSEEKER

Year Built: 2000

Model: High Performance

Price: PRICE ON APPLICATION

Location: United States

LOA: 75' 0" (22.86m)

Beam: 17' 10" (5.44m)

Max Draft: 4' 11" (1.50m)

Cruise Speed: 30 Kts. (35 MPH)

Max Speed: 35 Kts. (40 MPH)

Our experienced yacht broker, Andrey Shestakov, will help you choose and buy a yacht that best suits your needs **Viceroi I — SUNSEEKER** from our catalogue. Presently, at Shestakov Yacht Sales Inc., we have a wide variety of yachts available on our sale's list. We also work in close contact with all the big yacht manufacturers from all over the world.

If you would like to buy a yacht **Viceroi I — SUNSEEKER** or would like help answering any questions concerning purchasing, selling or chartering a yacht, please call **+1(954)274-4435**

TABLE OF CONTENTS

TABLE OF CONTENTS	2
SPECIFICATIONS	5
Overview	5
Basic Information	5
Dimensions	5
Speed, Capacities and Weight	5
Accommodations	6
Hull and Deck Information	6
Engine Information	6
DETAILED INFORMATION	7
Main deck	7
Cockpit	7
Crew Quarters	8
Electrical System	9
Electronics and Navigational Equipment	9
Engine /Mechanical Equipment	11
Galley	11
Guest Stateroom	12
Master Stateroom	13
Salon	13
VIP Stateroom	14
Exclusions	15
Disclaimer	15
PHOTOS	16
Cockpit Countertop	16
Cockpit Deck	16
Cockpit Deck	16
Cockpit Headliner	16

Cockpit Table	17
Cockpit	17
Galley	17
Guest Head	17
Guest Head	18
Guest Stateroom	18
Guest Stateroom	18
Day Head	18
Helm	19
Helm	19
Helm	19
Helm	19
Master Head	20
Master Stateroom	20
Master Stateroom	20
NAvigation	20
Looking into Saloon	21
Saloon-Galley	21
Saloon-Galley	21
Saloon	21
Saloon	22
Saloon	22
Saloon	22
Saloon	22
VIP Stateroom	23
VIP Stateroom	23
VIP Stateroom	23
VIP Stateroom	23
Swim Platform Teak Deck	24

Teak Deck	24
Teak Deck	24
Dock side Profile	25
Profile	25
Rear Sunpad	25
CONTACTS	26
Contact details	26
Telephones	26
Office hours	26
Address	26

SPECIFICATIONS

Overview

This vessel is located at Harbour Towne Marina in Dania Beach, FL and is SERIOUSLY for sale! She is in need of attention. Her Port Engine needs to be rebuilt; She needs new headliners throughout. She needs new rugs and new cushions in the upper salon. The blue hull shows very well. The topsides have recently been buffed, compounded and waxed and seems to be in very good condition. The woodwork throughout is in very good condition.

She is for sale "As Is" and the Seller is negotiable. Present all offers or ideas

Basic Information

Category: High Performance

Model Year: 2000

Year Built: 2000

Country: United States

Cockpit: Yes

Dimensions

LOA: 75' 0" (22.86m)

Beam: 17' 10" (5.44m)

Max Draft: 4' 11" (1.50m)

Speed, Capacities and Weight

Cruise Speed: 30 Kts. (35 MPH)

Max Speed: 35 Kts. (40 MPH)

Displacement: 75000 Pounds

Water Capacity: 242 Gallons

Fuel Capacity: 1321 Gallons

Accommodations

Total Cabins: 3

Total Berths: 4

Sleeps: 6

Total Heads: 3

Hull and Deck Information

Hull Material: Fiberglass

Engine Information

Engines: 2

Manufacturer: MAN

Model: 1300 hp

Engine Type: Inboard

Fuel Type: Diesel

DETAILED INFORMATION

Main deck

Fittings all in stainless steel

8 stainless steel deck cleats

Pulpit and cockpit rails

Stainless steel fendering with Rubber insert

Curved safety glass windscreen

Stainless steel bow roller with Anchor stop

Stainless steel bow plate

Delta anchor and 60m chain (galvanised)

Electric winch and capstan with Deck and cockpit controls 24v

2x Stern electric capstan winches

Chain locker finder storage

3x pantograph windscreen wipers

24v and washers

Fuel fillers port and starboard

Fresh water filler

IMCO navigation lights

Teak side decks

Ensign staff and socket

6 Fenders

4 Moorings

Cockpit

Self draining

Stern safety door

Garage under sunlounger

Electric winch for recovery of tender

Twin Opening Hardtop

Deeply upholstered seating for up to 8 around cockpit table

Upholstered stern seat

Lockers beneath seating

Teak cockpit

Full size sunbather

Ceramic griddle

Wetbar with ice chest, wine cooler and hot and cold water

Glass holders

Overhead cockpit lights 24v

Foot-level courtesy lighting 24v

Boathook

Crew Quarters

Single berth

Storage underneath

Reading lights 24v

Hanging wardrobe

Overhead halogen 24v

Opening porthole with mosquito screen and curtains

Double 240v AC sockets

Electric toilet

Wash basin

Hot and cold water

Shaver socket 240/110v

Oak planked floor

Electrical System

Generator

Exhaust and sound box

AC 240v dockside connection with 2x Glendinning cablemasters

Galvanic isolator

24v and 12v DC electrical system with full circuit breaker protection

6x Engine batteries 24v circuit

4x Domestic batteries 24v circuit

2x Generator batteries 12v circuit

Alternator split charging system

Remote battery switches controlled

80amp battery charger for 24v circuits

20amp battery charger for 12 circuits

Water heater 1.5kw 240v AC

240v AC sockets throughout the boat

24v hand light and cable

Electronics and Navigational Equipment

961 Northstar

Furuno Radar

Simrad Autopilot

SAT TV

SAT Phone

2x Helm seats and co-pilot seating

Chart area

Console with burr walnut facia

Power - assisted steering

Wood rimmed steering wheel

Single lever controls

Radar

Chart plotter with GPS

Full analogue engine instrumentation

Electronic speedlog

Depth sounder

Rudder indicator

Fresh water gauge

Fuel gauge

VHF radio

Trim tab controls

Compass

Horn

Windsreen wipers and washers

Glass holders

Hand-held fire extinguishers

Radio/CD player

Engine /Mechanical Equipment

Twin Diesel engines

Soundproofing throughout

Separate fuel filters

Water separators

Automatic fire extinguishers

Engine room/forward bilge alarms

2x automatic bilge pumps

2x automatic flood pumps

4x extractor fans 24v

(4) blade NAB bronze propellers

Bronze P-brackets

2x 2 1/4" stainless steel temet/25 shafts

Dripless shaft logs w/spare seals

High performance bronze rudders and struts

Seawater stariners - 2 for main engines and 1 for generator

Seasockets on all underwater fittings

Full cathodic bonding to zinc anodes

Bow thruster 24v

Hydraulic trim tabs 24v

Galley

Ceramic hob 240v

Microwave/grill 240v

Refrigerator 24v

Freezer 24v

Sink and drainer

Hot and cold water

Trash compactor

Cupboard and drawer storage

6 place crockery set

6 place cutlery set

AC sockets

Hand-held fire extinguisher

Opening porthole with mosquito screen

Air conditioning

Guest Stateroom

2 single pullman berths

Under berth storage

2x reading lights

Full hanging wardrobe w/mirror

Overhead halogen lighting 24v

Opening porthole w/mosquito screen & curtain

Double 240v AC sockets

Door to en-suite shower room

Air conditioning

Master Stateroom

Double berth

Storage underneath Television/video

Radio/CD player

2 x reading lights

Full hanging wardrobe w/mirror

Dressing table

Overhead halogen lights 24v

Opening porthole w/mosquito screen & curtain

Double 240v AC sockets

Door to ensuite shower room

Air conditioning

Chaise lounge

Salon

Large dining/lounging area with dining table

Lockers beneath seats

Scatter cushions

Overhead cupboards

Television, video and radio/Hi-fi system

Opening portholes and deck hatches

W/mosquito screens and curtains

Overhead halogen lights 24v

Low-level lighting 24v

Main control panel (AC/DC)

Generator controls

2x double 240v AC sockets

Vacuum cleaner

High gloss lacquered interior finish

Air conditioning

Drinks cupboard

Fitted carpet

VIP Stateroom

Double berth

Storage beneath

Drawer in base end

Dressing table

Overhead bedside cupboards

Hanging wardrobe

Shelved cupboard

Halogen overhead lights 24v

2x reading lights 24v

Opening portholes w/mosquito

Screens and curtains

Deck hatch

AC socket

Air conditioning

Television/video

Exclusions

Owner's personal belongings.

Disclaimer

The Company offers the details of this vessel or yacht in good faith but cannot guarantee or warrant the accuracy of this information nor warrant the condition of the vessel. A buyer should instruct his representatives, agents, or his surveyors, to investigate such details as the buyer desires validated. This vessel or yacht is offered subject to prior sale, price change, or withdrawal without notice.

PHOTOS

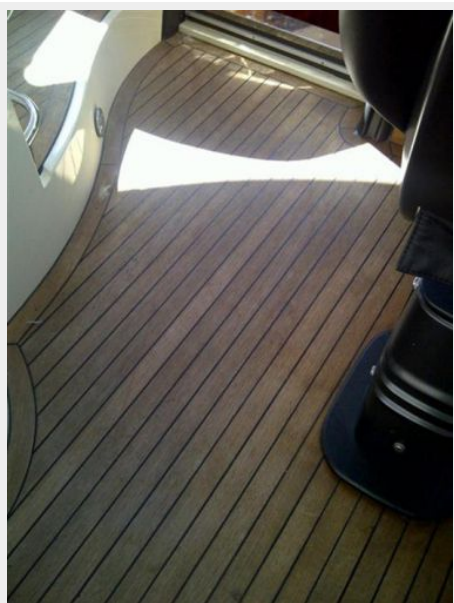
Cockpit Countertop



Cockpit Deck



Cockpit Deck



Cockpit Headliner



Cockpit Table



Cockpit



Galley



Guest Head



Guest Head



Guest Stateroom



Guest Stateroom



Day Head



Helm



Helm



Helm



Helm



Master Head



Master Stateroom



Master Stateroom



Navigation



Looking into Saloon



Saloon-Galley



Saloon-Galley



Saloon



Saloon



Saloon



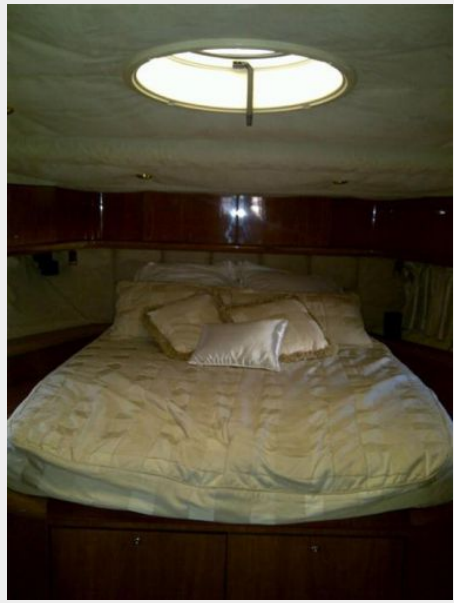
Saloon



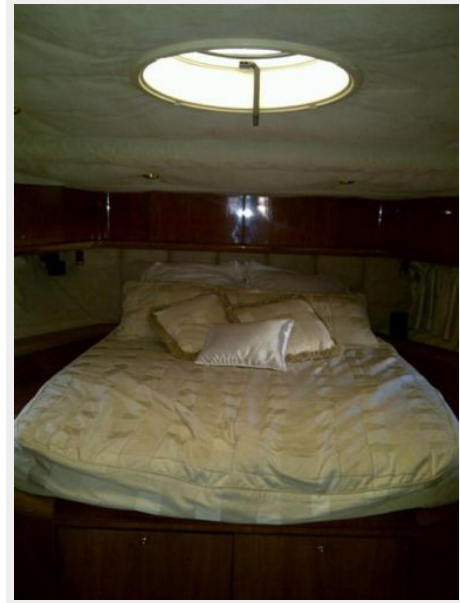
Saloon



VIP Stateroom



VIP Stateroom



VIP Stateroom



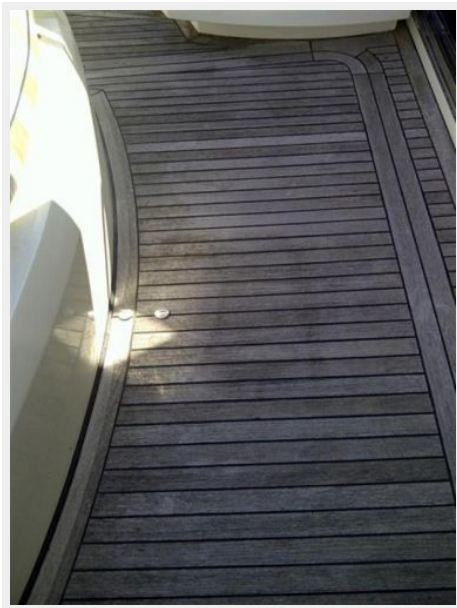
VIP Stateroom



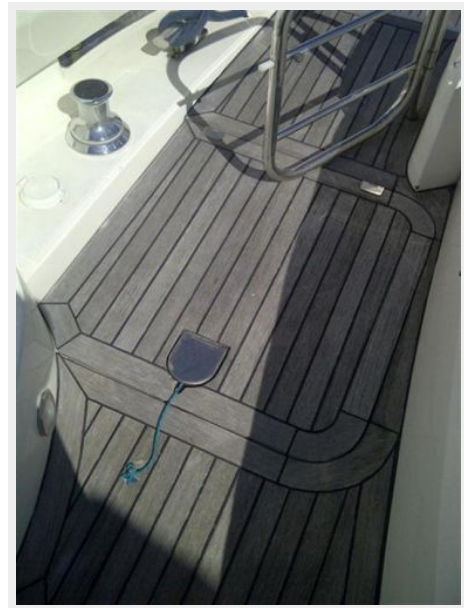
Swim Platform Teak Deck



Teak Deck



Teak Deck



Dock side Profile



Profile



Rear Sunpad



CONTACTS

Andrey Shestakov, leading yacht broker of the sales department of Shestakov Yacht Sales Inc. Shestakov Yacht Sales Inc., the official representative of the Miami/Fort Lauderdale FL headquarters.

Contact details

Email: andrey@shestakovyachtsales.com

Web: shestakovyachtsales.com/en/

Telephones

USA: +1(954)274-4435

Office hours

Monday – Saturday: **9:00 - 21:00** EDT

Sunday: **closed**

Address



Harbour Towne Marina, 850 NE 3rd St,
STE 213, Dania, FL 33004