

## SAFARA — SCORPIO



**Судостроитель:** SCORPIO

**Год постройки:** 1998

**Модель:** Cruising/Racing Sailboat

**Цена:** **ЦЕНА ЯХТЫ ПО ЗАПРОСУ**

**Местонахождение:** Spain

**Длина общая:** 72' 0" (21.95m)

**Ширина:** 17' 0" (5.18m)

**Макс. осадка:** 9' 5" (2.87m)

**Крейс. скорость:** 9 Kts. (10 MPH)

**Макс. скорость:** 9 Kts. (10 MPH)

Купить **SAFARA — SCORPIO** а также выбрать подходящую вам яхту из нашего каталога яхт вам поможет опытный яхтенный брокер Андрей Шестаков. На сегодняшний день компания **Shestakov Yacht Sales Inc.** имеет большое количество яхт в собственном списке продаж, а также тесно сотрудничает со всеми крупными яхтенными производителями по всему миру.

Для того чтобы купить яхту **SAFARA — SCORPIO** а также проконсультироваться по любому вопросу связанному с покупкой, продажей, чартером яхт позвоните по телефону **+7(918)465-66-44**.

# ОГЛАВЛЕНИЕ

ОГЛАВЛЕНИЕ	2
ХАРАКТЕРИСТИКИ	4
Обзор	4
Основная информация	4
Размеры	4
Скорость, вместимость и масса	4
Размещение	5
Корпус и палуба	5
Информация о двигателе	5
ПОДРОБНОЕ ОПИСАНИЕ	6
Accommodations	6
Galley	6
Electronics	6
Electrical	7
Sails	7
Deck	7
Additional Information	7
Brokers Comments	8
Other	8
Исключения	8
Отказ от ответственности	8
ФОТОГРАФИИ	10
Under Sail	10
Flush Hatches	10
Dining Table Detail	10
Galley	10
Salon	10
Galley Details	10

---

Salon 2	11
Salon	11
Salon	11
Salon 3	11
Salon 4	11
Master Cabin	11
Master Head	12
Stern Cabin Port	12
Stern Cabin Starboard	12
Salon Facing Aft	12
Layout	12
Under Sail	12
Layout	13
<b>КОНТАКТЫ</b>	<b>14</b>
Контактная информация	14
Телефоны	14
Время работы	14
Адрес	14

# ХАРАКТЕРИСТИКИ

## Обзор

We have sailed numerous performance oriented cruising boats, however none as exciting as SAFARA. I am pleased to say I personally have two Heineken Regatta class wins on her! Stunning and a goer!!!

Her recent refit and substantial upgrades coupled with the love and proper care she has received over the years will surely offer her next owner exceptional value and minimal maintenance expenditures for years to come.

## Основная информация

Тип судна: Cruising/Racing Sailboat

Модельный год: 1998

Год постройки: 1998

Год обновления: 2010

Страна: Spain

## Размеры

Длина общая: 72' 0" (21.95m)

Ширина: 17' 0" (5.18m)

Макс. осадка: 9' 5" (2.87m)

Длина привального бруса: 72' 0"  
(21.95m)

## Скорость, вместимость и масса

Крейс. скорость: 9 Kts. (10 MPH)

Макс. скорость: 9 Kts. (10 MPH)

Водоизмещение: 42000 Pounds

Вместимость воды: 120 Gallons

Вместимость сточного бака: 40 Gallons

Объем топливного бака: 145 Gallons

## Размещение

---

Всего кают: 3

## Корпус и палуба

---

Материал корпуса: Carbon Composite

Материал палубы: Teak

Комплектация корпуса: Fin & Spade

Цвет корпуса: White

Дизайнер корпуса: Alan Andrews

## Информация о двигателе

---

Двигатели: 1

Производитель: Yanmar

Модель: 4HL DTE

Тип двигателя: Inboard

Тип топлива: Diesel

---

# ПОДРОБНОЕ ОПИСАНИЕ

---

## Accommodations

---

SAFARA offers a very elegant and recently refit interior plan. Her owner's stateroom is just forward of the mast and full beam with queen berth to starboard, hanging locker, settee w/desk, cedar closet, ample storage and ensuite head with bathtub and shower. Two guest staterooms of equal size split to port and starboard are aft of the main salon. Both have double berths with settee, hanging locker, storage and ensuite heads. There is a separate stand up stall shower shared between these cabins. The main salon is full beam, open layout with huge table, settee opposite, pilot berth, entertainment cabinet, shelves and plenty of storage. White ultra leather and white walls with beautiful custom mahogany trim accent this Hereshof styled interior. New teak and holly cabins soles add to the richness of the interior. To starboard is a large flat screen TV with surround sound.

## Galley

---

- Primary Refrigeration: Gruenert plate freezer and refer w/ front and top access
- Secondary Refrigeration: Waeco 12/24 volt supplementary refrigeration systems
- Custom mahogany counter tops
- Ample storage
- Force 10 gimbaled burner stove w/ oven
- Coria Carbon Black double well sink

## Electronics

---

- Ockham instruments w/OckamSoft 4, Ockam Race running on ToughBook
- 2 Matric displays at helm w/ 1 at nav station
- Simrad Autopilot
- Furuno 16" radar
- Furuno VX-2 (C-map NT) charting at helm station w/full US, Caribbean and Med charts
- Panasonic Toughbook C-19 running parallel / redundant plotter w/full US, Caribbean and Med charts
- MaxSea Software w/weather routing and AIS module, radar overlay
- Icom VHF
- Forward – looking Sonar probe depth
- EPIRB (x2)
- Fusion I-pod 4 zone stereo w/remotes at helm and mast
- Sony 42" LCD multi-format (PAL, NTSC, SeCam) Television
- Sony Receiver/amplifier w/Surround
- Bose 5.1 Surround system

---

## Electrical

---

- Isolation Transformer
- 4 large deep cycle Rolls 12V house batteries
- 2 deep cycle Rolls 24V batteries
- Isolated starter batteries for engine and genset
- 110/220 electrical shore/inverter
- Freedom 25 inverter inverters/chargers and alternators for 12 and 24 volt systems on main engine and genset
- Fully switched and fused system

---

## Sails

---

The spar is a carbon fiber triple spreader rig with carbon spreaders by Offshore Spars. Navtec hydraulics for backstay, vang, and outhaul. All running rigging and halyards are aramid fiber.

- 2010 Doyle Tri-Radial full batten main
- 2010 Doyle Performance Jib (carbon & Kevlar)
- UK #1 (150) Code Zero
- UK #1 Drifter
- North Sails 3DL #3 Jib
- UK Dacron #5 Jib
- UK Sails .75 A2 Asymmetrical Spinnaker
- North Code Zero
- UK #2 Genoa
- North Sails Dacron #4 Jib
- North Sails 3DL Main

---

## Deck

---

Open deck layout makes race or cruise with ease. All Halyards lead aft to companionway winches aft cockpit layout w/ removable table and teak deck in cockpit Teak trim w/ full length toe-rail 9 large Lewmar flush-deck hatches for great ventilation

---

## Additional Information

---

This unique boat is as comfortable racing as she is cruising. She is light and fast and roomy down below. She also has a Charter ready Inventory that includes kneeboard, tube and scuba gear. Additional features are listed below.

- Harken winches and deck hardware
- Main halyard and primaries are electric

- Lewmar electric windlass
- Bruce and anchor w/ 300'chain
- Fortress anchor
- Custom stainless bow roller
- Westerbeke 7KW Genset
- Water Maker
- Full safety equipment
- Zodiac 14' tender with 40hp outboard

---

## Brokers Comments

---

We have sailed numerous performance oriented cruising boats, however none as exciting as SAFARA. I am pleased to say I personally have two Heineken Regatta class wins on her! Stunning and a goer!!! Her recent refit and substantial upgrades coupled with the love and proper care she has received over the years will surely offer her next owner exceptional value and minimal maintenance expenditures for years to come. Designed by one of the world's top yacht designers, Alan Andrews, this Andrews 72's design descends from a line of lightweight high performance Turbo-Sleds and combines lines reminiscent of a Swan with the efficiency and practicality of a modern sprit boat. Launched by Scorpio Yachts (Ontario) in 1998, Safara sailed the fresh water classic Mackinac Races that year before charter seasons in the Caribbean and New England. From 2002 to 2006 she returned to the Great Lakes again completing successful campaigns in both Mac races. After a refit in 2004, Safara was re-launched in July 2006 and sailed back to her home in Newport, RI continuing south to the West Indies where she kept pace against performance yachts with longer waterlines, winning her class in the 2010 St. Martin Heineken Regatta. Safara now returns fresh from a refit season in the Mediterranean.

---

## Other

---

“There is not an ugly line on this entire design. It's immediately obvious that this boat is good-looking, from any angle. The ultra-delicate sweep of the sheer combines with the low wedge of the cabin to give us a very contemporary looking yacht in the classic style established by the Swan line. Combined with the simplicity of the interior, with one of the most effective uses of a carbon-fiber and foam-core structures that provides a quiet and comfortable setting in a perfect marriage of form and function. Nobody said it had to be complicated to be good.” Robert Perry Sailing Magazine Review

---

## Исключения

---

При продаже яхты исключаются личные вещи владельца.

---

## Отказ от ответственности

---



Компания предоставляет описание судна или яхты добросовестно, но не может гарантировать точность этой информации, а также не ручается за техническое состояние. Покупатель должен проинструктировать своих агентов или оценщиков исследовать представленную информацию более подробно, по собственному желанию. Продажа судна или яхты, изменение цены или снятие с продажи будет происходить без предварительного уведомления.

# ФОТОГРАФИИ

## Under Sail



## Flush Hatches



## Dining Table Detail



## Galley



## Galley Details



## Salon



**Salon 2**



**Salon**



**Salon**



**Salon 3**



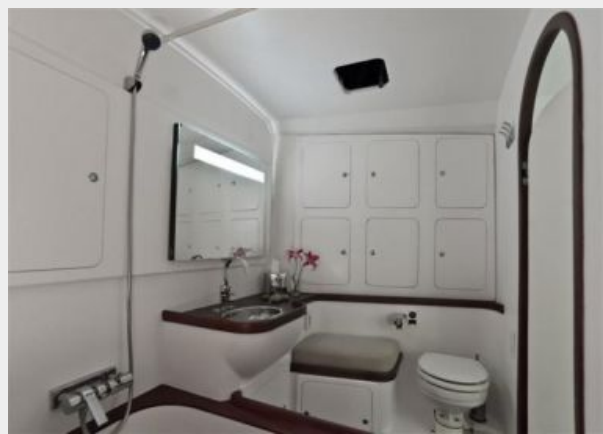
**Salon 4**



**Master Cabin**



**Master Head**



**Stern Cabin Port**



**Stern Cabin Starboard**



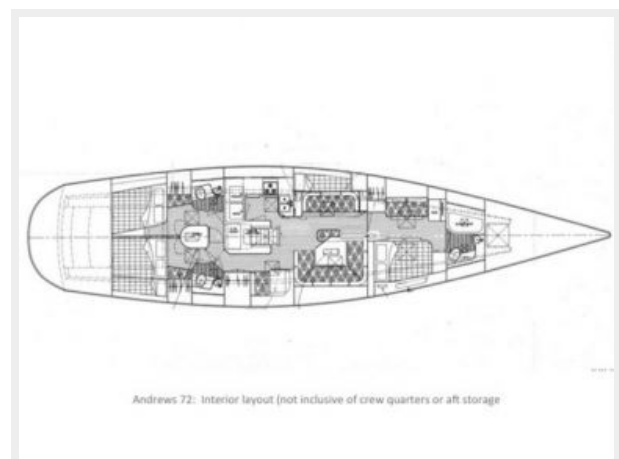
**Salon Facing Aft**



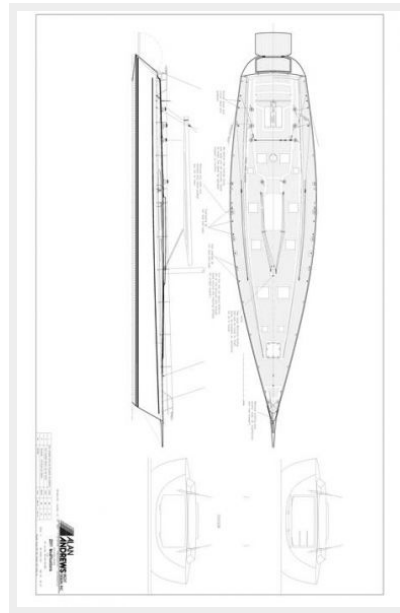
**Under Sail**



**Layout**



## Layout



# КОНТАКТЫ

---

Андрей Шестаков (Andrey Shestakov) – ведущий яхтенный брокер отдела продаж яхт и судов компании Shestakov Yacht Sales Inc. Официальный представитель Shestakov Yacht Sales Inc. для русскоговорящих клиентов в центральном офисе компании в Майами/Форт Лодердейл/Флорида/США.

## Контактная информация

---

Email: [andrey@shestakovyachtsales.com](mailto:andrey@shestakovyachtsales.com)

Web: [shestakovyachtsales.com](http://shestakovyachtsales.com)

## Телефоны

---

Краснодарский край: **+7(918)465-66-44**

США, Майами, Флорида: **+1(954)274-4435**

## Время работы

---

Понедельник – Суббота: **9:00 - 21:00**  
EDT

Воскресенье: **Закрито**

## Адрес

---



Harbour Towne Marina, 850 NE 3rd St,  
STE 213, Dania, FL 33004