

COCA VI — ARNO



Builder: ARNO

Year Built: 2001

Model: Commercial Vessel

Price: PRICE ON APPLICATION

Location: France

LOA: 88' (26.8mm)

Beam: 19.68

Max Draft: 7' 7" (2.3mm)

Cruise Speed: 24 Knots Kts. (28 MPH)

Max Speed: 27 Knots Kts. (31 MPH)

Our experienced yacht broker, Andrey Shestakov, will help you choose and buy a yacht that best suits your needs **COCA VI — ARNO** from our catalogue. Presently, at Shestakov Yacht Sales Inc., we have a wide variety of yachts available on our sale's list. We also work in close contact with all the big yacht manufacturers from all over the world.

If you would like to buy a yacht **COCA VI — ARNO** or would like help answering any questions concerning purchasing, selling or chartering a yacht, please call **+1(954)274-4435**

TABLE OF CONTENTS

TABLE OF CONTENTS	2
SPECIFICATIONS	4
Overview	4
Basic Information	4
Dimensions	4
Speed, Capacities and Weight	4
Accommodations	4
Hull and Deck Information	4
Engine Information	5
PHOTOS	6
Leopard 26 - Mooring Shot	6
Leopard 26 - Mooring Shot	6
Leopard 26 - Front Sunbath	6
Leopard 26 - Flybridge	6
Leopard 26 - Flybridge & Jacuzzi	6
Leopard 26 - Flybridge & Jacuzzi	6
Leopard 26 - Cockpit & Dining Area	7
Leopard 26 - Salon	7
Leopard 26 - Master Cabin	7
Leopard 26 - Master Cabin	7
Leopard 26 - VIP Cabin	7
Leopard 26 - Twin Cabin	7
Leopard 26 - Bathroom	8
Leopard 26 - Layout	8
CONTACTS	9
Contact details	9
Telephones	9
Office hours	9

Address

9

SPECIFICATIONS

Overview

COCA VI is in immaculate condition. She boasts a modern interior and a jacuzzi on her flybridge. Her home berth in Antibes is also for sale.

Basic Information

Category: Commercial Vessel

Model Year: 2001

Year Built: 2001

Refit Type: 2009 / 2011 Saloon: new sofas, table and chairs
COCKPIT: beautiful table lacquered white with 8 dark brown seats

Country: France

Dimensions

LOA: 88' (26.8mm)

Beam: 19.68

Max Draft: 7' 7" (2.3mm)

Speed, Capacities and Weight

Cruise Speed: 24 Knots Kts. (28 MPH)

Max Speed: 27 Knots Kts. (31 MPH)

Accommodations

Total Cabins: 3

Sleeps: 6

Hull and Deck Information

Hull Material: GRP

Engine Information

Engines: 2

Manufacturer: MTU

Engine Type: Inboard

Fuel Type: Diesel

PHOTOS

Leopard 26 - Mooring Shot



Leopard 26 - Mooring Shot



Leopard 26 - Front Sunbath



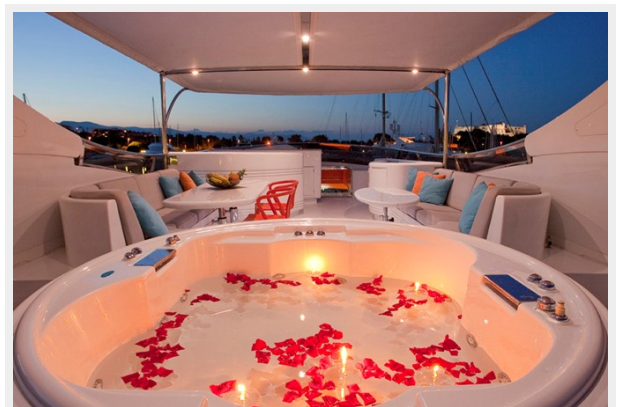
Leopard 26 - Flybridge



Leopard 26 - Flybridge & Jacuzzi



Leopard 26 - Flybridge & Jacuzzi



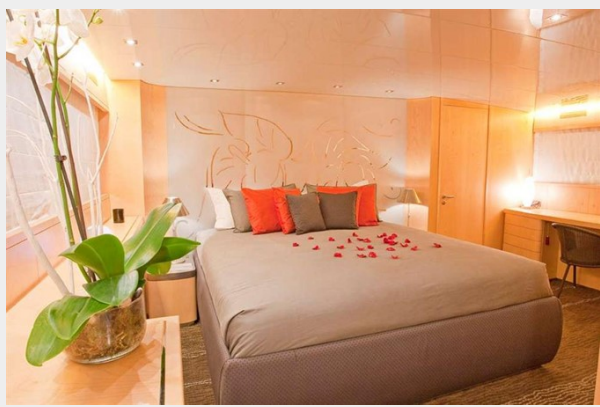
Leopard 26 - Cockpit & Dining Area



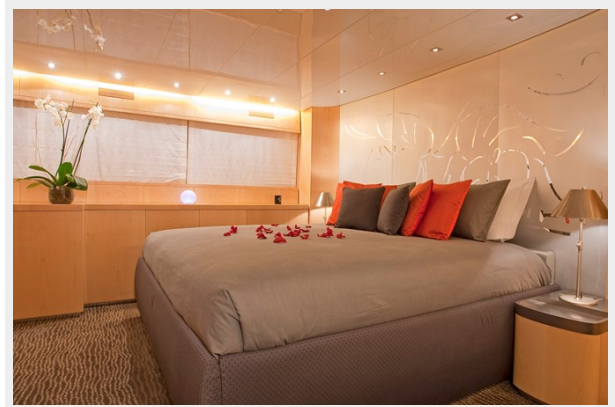
Leopard 26 - Salon



Leopard 26 - Master Cabin



Leopard 26 - Master Cabin



Leopard 26 - VIP Cabin



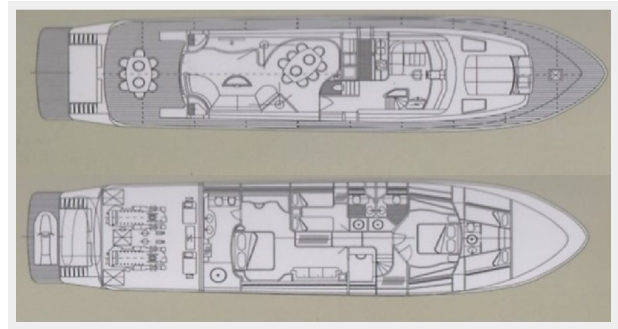
Leopard 26 - Twin Cabin



Leopard 26 - Bathroom



Leopard 26 - Layout



CONTACTS

Andrey Shestakov, leading yacht broker of the sales department of Shestakov Yacht Sales Inc. Shestakov Yacht Sales Inc., the official representative of the Miami/Fort Lauderdale FL headquarters.

Contact details

Email: andrey@shestakovyachtsales.com

Web: shestakovyachtsales.com/en/

Telephones

USA: +1(954)274-4435

Office hours

Monday – Saturday: **9:00 - 21:00** EDT

Sunday: **closed**

Address



Harbour Towne Marina, 850 NE 3rd St,
STE 213, Dania, FL 33004