

RAINBOW EYES — HATTERAS



Builder: HATTERAS

Year Built: 1985

Model: Sport Fisherman

Price: PRICE ON APPLICATION

Location: United States

LOA: 60' 0" (18.29m)

Beam: 18' 0" (5.49m)

Max Draft: 4' 6" (1.37m)

Cruise Speed: 17 Kts. (20 MPH)

Max Speed: 20 Kts. (23 MPH)

Our experienced yacht broker, Andrey Shestakov, will help you choose and buy a yacht that best suits your needs **RAINBOW EYES — HATTERAS** from our catalogue. Presently, at Shestakov Yacht Sales Inc., we have a wide variety of yachts available on our sale's list. We also work in close contact with all the big yacht manufacturers from all over the world.

If you would like to buy a yacht **RAINBOW EYES — HATTERAS** or would like help answering any questions concerning purchasing, selling or chartering a yacht, please call **+1(954)274-4435**

TABLE OF CONTENTS

TABLE OF CONTENTS	2
SPECIFICATIONS	5
Overview	5
Basic Information	5
Dimensions	5
Speed, Capacities and Weight	6
Accommodations	6
Hull and Deck Information	6
Engine Information	6
DETAILED INFORMATION	7
Accommodations	7
Salon	7
Galley	7
Master Stateroom	7
Forward Guest Stateroom	8
Starboard Guest Stateroom	8
Companion Way	8
Deck Equipment	9
Flybridge	9
Electronics and Navigational Equipment	9
Engine /Mechanical Equipment	10
Electrical System	10
Cockpit & Fishing Equipment	10
Broker Remarks	11
Exclusions	11
Exclusions	11
Disclaimer	11
PHOTOS	12

Portside View	12
Cockpit	12
Bridge Helm	12
Electronics Panel	12
Salon - Looking forward	12
Salon looking Aft	12
Salon Seating Area	13
Dinette Area	13
Galley	13
Galley	13
Master Stateroom	13
Master Stateroom	13
Master Stateroom	14
Master Head	14
2nd Stateroom	14
2nd Head	14
3rd Head	15
Fwd Guest Stateroom	15
Washer/Dryer	15
Storage Area	15
Engine Room	16
Engine Room	16
Engine Room	16
Engine Room	16
Bow Railings	17
Transom	17
CONTACTS	18
Contact details	18
Telephones	18

Office hours	18
Address	18

SPECIFICATIONS

Overview

In its day the Hatteras 60 Convertible was the ideal combination of all-out sportfishing machine and luxury cruising yacht. Her expansive three-stateroom, three-head layout places the master stateroom amidships and includes a walk-around queen berth. The salon, galley and dinette and are arranged on the deckhouse level and offers a spacious feeling do to the custom factory open galley. Additional features include a deep keel for prop protection, an open fly bridge with fore and aft helm stations, the massive cockpit (175 sq. ft) provides direct access to the well-arranged standup engine room. A separate utility room forward of the engine compartment houses the air-conditioning compressors, washer/dryer, and storage to spare. **Major Overhaul in May 2014: both engines were completely rebuilt including new crankshaft bearings. Extensive parts list and repair invoices available. Bottom was painted (5/2014) with NO EVIDENCE of blisters! "This Classic Hatteras was never fished hard and put up wet. Owner moving out of Florida and merits the sale of the boat!"

Basic Information

Category: Sport Fisherman

Model Year: 1985

Year Built: 1985

Country: United States

Vessel Top: Open

Fly Bridge: Yes

Cockpit: Yes

Dimensions

LOA: 60' 0" (18.29m)

Beam: 18' 0" (5.49m)

Max Draft: 4' 6" (1.37m)

MFG Length: 60' 11" (18.57m)

Speed, Capacities and Weight

Cruise Speed: 17 Kts. (20 MPH)

Max Speed: 20 Kts. (23 MPH)

Displacement: 82000 Pounds

Water Capacity: 490 Gallons

Fuel Capacity: 1555 Gallons

Accommodations

Total Cabins: 3

Total Berths: 5

Sleeps: 6

Total Heads: 3

Hull and Deck Information

Hull Material: Fiberglass

Deck Material: Fiberglass

Engine Information

Engines: 2

Manufacturer: Detroit Diesel

Model: 12V71

Engine Type: Inboard

Fuel Type: Diesel

DETAILED INFORMATION

Accommodations

“Rainbow Eyes” offers a superb combination of strength and comfort. With accommodations that offers a three staterooms layout that includes an amidships master with a walk-around queen berth, three large heads, all with separate stall showers. Notable other amenities are the oversized custom factory open galley, large dinette, a spacious salon and a roomy utility room with washer/dryer and ample storage.

Salon

- Teak wood paneling
- Large L-shaped Sofa
- Two arm chairs
- Custom Entertainment Center
- Color TV
- Sony DVD & VCR Player
- Sansonic Dolby Digital Sound System
- Panasonic Stereo with 5-CD changer & Tape Player Speakers
- Furuno Skanti SSB
- CruiseAir-Air Conditioning Systems
- Custom sculpted carpeting
- Overhead Lighting
- Mini Blinds and Drapes

Galley

- Custom factory open galley
- 2 Burner Jen Air Cooktop
- Frigidaire full-sized standup refrigerator/ freezer
- Nutone Mixer Garbage disposal
- Liquor & Wine Cabinet
- Amana Microwave Oven
- Dinette w/storage drawers beneath
- Stainless steel sink
- Ample Storage

Master Stateroom

- Walk-around queen berth
- Two night stands with storage
- Storage compartment under bed
- Hanging Locker
- Storage Drawers
- Overhead and Reading Lights
- Cruisair Air Conditioning System
- Overhead Speakers
- Overhead hatch
- Access to Head w/ separate stall shower
- Vanity/Sink with storage below
- Storage cabinet with mirror

Forward Guest Stateroom

- Over/Under Bunks
- Hanging Locker
- Storage Drawers
- Overhead and Reading Lights
- Overhead hatch
- Cruisair Air Conditioning System
- Head w/ separate stall shower
- Vanity/Sink with storage below
- Storage cabinet with mirror

Starboard Guest Stateroom

- Over/Under Bunks
- Hanging Locker
- Storage Drawers
- Cruisair Air Conditioning System
- Overhead and Reading lights
- Bedside table w/lamp
- Head w/ separate stall shower
- Vanity/Sink with storage below
- Storage cabinet with mirror There is access to this head from the companion way (Day head)

Companion Way

The companion way stairs lift for access to the Utility Room. There is also a storage locker on this level.

Deck Equipment

- Stainless steel bow rails
- Bow pulpit and anchor chute
- Windless Anchor
- Spare set of props
- Custom swim ladder

Flybridge

- Forward helm station with custom molded electronic boxes, full engine gauge package, controls, steering
- Two teak Rybovich Helm chairs
- Three sided enclosure
- Hatteras Monitor System. Port bench seating
- Starboard L-shaped bench seating
- Generator Start/Stop and Gauges
- **Aft helm station**; with full engine gauge package, controls, steering.
- Teak Rybovich Helm chairs
- Hatteras Monitor System
- Aft facing settee-starboard side
- (5) Aft flybridge rod holders

Electronics and Navigational Equipment

- Compass
- Furuno Radar
- Furuno Color Video Sounder
- Robertson Auto Pilot AP20
- Northstar 951X GPS
- Icom ICM-M126 VHF
- Standard Hailer
- EPIRB
- Datamarine International Depth
- Standard VHF Radio (Cockpit)
- Water temperature Gauge (Cockpit)
- Trim tab switches
- Rudder Angle Indicators

- Jensen Stereo w/speakers
- Generator Gauges
- Hydraulic Gear and Throttle Controls
- Tower controls, wheel and buggy top

Engine /Mechanical Equipment

- Detroit 12V71ti @ 650 HP w/3516 hrs
- Mechanical Engine Gauges
- 20 kw Northern Lights Generator w/sound shields-3000hrs
- Engine room Fireboy, fire extinguishing system
- Forward Utility Room w/ GE Washer, dryer, air conditioner compressors, storage and hot water heater

Electrical System

- DC:12V; 32V
- AC: 240 Volt; 120 Volts
- Batteries
- Battery Switches
- Battery Charger
- DOCKSIDE CABLES: (2) 50 Amp
- GENERATOR: Northern Lights 20kw
- Engine Alternators
-

Cockpit & Fishing Equipment

- Massive (175 sq. ft.) Cockpit
- Teak cockpit sole and covering boards
- Six (6) rod holders throughout covering boards
- Circulating Livewell
- Tackle Center w/Sink and Storage
- Large Rybovich Fighting Chair
- Cockpit Controls, Standard VHF Radio, Rudder Angle Indicator, Water temp.
- Custom storage, portside
- Transom door and gate
- Fresh water wash down
- Salt water wash down
- Rupp Outriggers
- Raised Marlin Tower

- Tower controls, wheel and buggy top
- Fish Box
- Port and Stbd access to the lazarette
- Ladder to fly bridge
- CAT Inlet, T.V.& Phone

Broker Remarks

In its day the Hatteras 60 Convertible was the ideal combination of all-out sportfishing machine and luxury cruising yacht. Her expansive three-stateroom, three-head layout places the master stateroom amidships and includes a walk-around queen berth. The salon, galley and dinette and are arranged on the deckhouse level and offers a spacious feeling do to the custom factory open galley. Additional features include a deep keel for prop protection, an open fly bridge with fore and aft helm stations, the massive cockpit (175 sq. ft) provides direct access to the well-arranged standup engine room. A separate utility room forward of the engine compartment houses the air-conditioning compressors, washer/dryer, and storage to spare.

Exclusions

- Owner's Personal Items

Exclusions

Owner's personal belongings.

Disclaimer

The Company offers the details of this vessel or yacht in good faith but cannot guarantee or warrant the accuracy of this information nor warrant the condition of the vessel. A buyer should instruct his representatives, agents, or his surveyors, to investigate such details as the buyer desires validated. This vessel or yacht is offered subject to prior sale, price change, or withdrawal without notice.

PHOTOS

Portside View



Cockpit



Bridge Helm



Electronics Panel



Salon - Looking forward



Salon looking Aft



Salon Seating Area



Dinette Area



Galley



Galley



Master Stateroom



Master Stateroom



Master Stateroom



Master Head



2nd Stateroom



2nd Head



Fwd Guest Stateroom



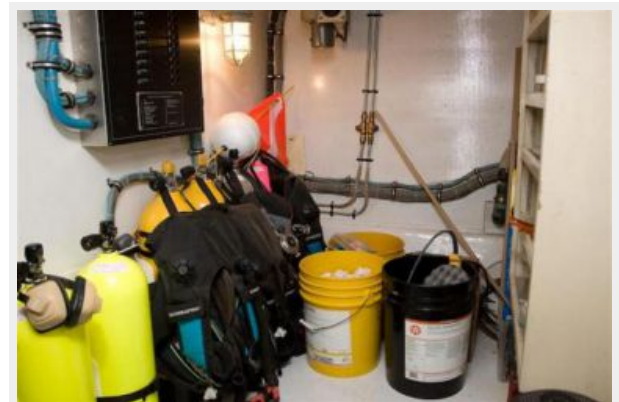
3rd Head



Washer/Dryer



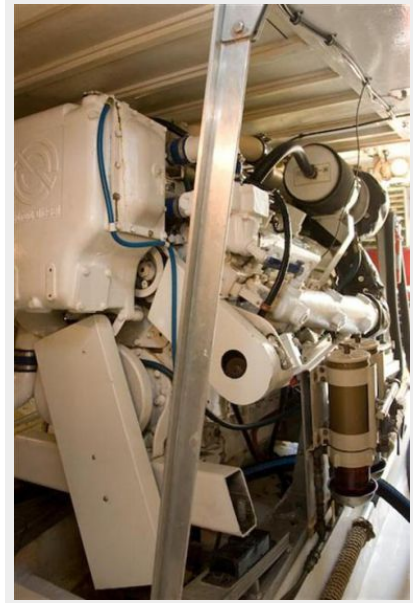
Storage Area



Engine Room



Engine Room



Engine Room



Engine Room



Bow Railings



Transom



CONTACTS

Andrey Shestakov, leading yacht broker of the sales department of Shestakov Yacht Sales Inc. Shestakov Yacht Sales Inc., the official representative of the Miami/Fort Lauderdale FL headquarters.

Contact details

Email: andrey@shestakovyachtsales.com

Web: shestakovyachtsales.com/en/

Telephones

USA: +1(954)274-4435

Office hours

Monday – Saturday: **9:00 - 21:00** EDT

Sunday: **closed**

Address



Harbour Towne Marina, 850 NE 3rd St,
STE 213, Dania, FL 33004