

RAINBOW EYES — HATTERAS



Судостроитель: HATTERAS

Год постройки: 1985

Модель: Катер для спортивной рыбалки

Цена: ЦЕНА ЯХТЫ ПО ЗАПРОСУ

Местонахождение: United States

Длина общая: 60' 0" (18.29m)

Ширина: 18' 0" (5.49m)

Макс. осадка: 4' 6" (1.37m)

Крейс. скорость: 17 Kts. (20 MPH)

Макс. скорость: 20 Kts. (23 MPH)

Купить **RAINBOW EYES — HATTERAS** а также выбрать подходящую вам яхту из нашего каталога яхт вам поможет опытный яхтенный брокер Андрей Шестаков. На сегодняшний день компания **Shestakov Yacht Sales Inc.** имеет большое количество яхт в собственном списке продаж, а также тесно сотрудничает со всеми крупными яхтенными производителями по всему миру.

Для того чтобы купить яхту **RAINBOW EYES — HATTERAS** а также проконсультироваться по любому вопросу связанному с покупкой, продажей, чартером яхт позвоните по телефону **+7(918)465-66-44**.

ОГЛАВЛЕНИЕ

ОГЛАВЛЕНИЕ	2
ХАРАКТЕРИСТИКИ	5
Обзор	5
Основная информация	5
Размеры	5
Скорость, вместимость и масса	6
Размещение	6
Корпус и палуба	6
Информация о двигателе	6
ПОДРОБНОЕ ОПИСАНИЕ	7
Accommodations	7
Salon	7
Galley	7
Master Stateroom	7
Forward Guest Stateroom	8
Starboard Guest Stateroom	8
Companion Way	8
Deck Equipment	9
Flybridge	9
Electronics and Navigational Equipment	9
Engine /Mechanical Equipment	10
Electrical System	10
Cockpit & Fishing Equipment	10
Broker Remarks	11
Exclusions	11
Исключения	11
Отказ от ответственности	11
ФОТОГРАФИИ	12

Portside View	12
Cockpit	12
Bridge Helm	12
Electronics Panel	12
Salon - Looking forward	12
Salon looking Aft	12
Salon Seating Area	13
Dinette Area	13
Galley	13
Galley	13
Master Stateroom	13
Master Stateroom	13
Master Stateroom	14
Master Head	14
2nd Stateroom	14
2nd Head	14
3rd Head	15
Fwd Guest Stateroom	15
Washer/Dryer	15
Storage Area	15
Engine Room	16
Engine Room	16
Engine Room	16
Engine Room	16
Bow Railings	17
Transom	17
КОНТАКТЫ	18
Контактная информация	18
Телефоны	18

Время работы	18
Адрес	18

ХАРАКТЕРИСТИКИ

Обзор

In its day the Hatteras 60 Convertible was the ideal combination of all-out sportfishing machine and luxury cruising yacht. Her expansive three-stateroom, three-head layout places the master stateroom amidships and includes a walk-around queen berth. The salon, galley and dinette and are arranged on the deckhouse level and offers a spacious feeling do to the custom factory open galley. Additional features include a deep keel for prop protection, an open fly bridge with fore and aft helm stations, the massive cockpit (175 sq. ft) provides direct access to the well-arranged standup engine room. A separate utility room forward of the engine compartment houses the air-conditioning compressors, washer/dryer, and storage to spare. **Major Overhaul in May 2014: both engines were completely rebuilt including new crankshaft bearings. Extensive parts list and repair invoices available. Bottom was painted (5/2014) with NO EVIDENCE of blisters! "This Classic Hatteras was never fished hard and put up wet. Owner moving out of Florida and merits the sale of the boat!"

Основная информация

Тип судна: Катер для спортивной рыбалки

Модельный год: 1985

Год постройки: 1985

Страна: United States

Верх: Open

Открытая палуба мостика: Да

Кубрик: Да

Размеры

Длина общая: 60' 0" (18.29m)

Ширина: 18' 0" (5.49m)

Макс. осадка: 4' 6" (1.37m)

Длина привального бруса: 60' 11" (18.57m)

Скорость, вместимость и масса

Крейс. скорость: 17 Kts. (20 MPH)

Макс. скорость: 20 Kts. (23 MPH)

Водоизмещение: 82000 Pounds

Вместимость воды: 490 Gallons

Объем топливного бака: 1555 Gallons

Размещение

Всего кают: 3

Всего коек: 5

Спальные места: 6

Всего ком. состава: 3

Корпус и палуба

Материал корпуса: Fiberglass

Материал палубы: Fiberglass

Информация о двигателе

Двигатели: 2

Производитель: Detroit Diesel

Модель: 12V71

Тип двигателя: Inboard

Тип топлива: Diesel

ПОДРОБНОЕ ОПИСАНИЕ

Accommodations

“Rainbow Eyes” offers a superb combination of strength and comfort. With accommodations that offers a three staterooms layout that includes an amidships master with a walk-around queen berth, three large heads, all with separate stall showers. Notable other amenities are the oversized custom factory open galley, large dinette, a spacious salon and a roomy utility room with washer/dryer and ample storage.

Salon

- Teak wood paneling
- Large L-shaped Sofa
- Two arm chairs
- Custom Entertainment Center
- Color TV
- Sony DVD & VCR Player
- Sansonic Dolby Digital Sound System
- Panasonic Stereo with 5-CD changer & Tape Player Speakers
- Furuno Skanti SSB
- CruiseAir-Air Conditioning Systems
- Custom sculpted carpeting
- Overhead Lighting
- Mini Blinds and Drapes

Galley

- Custom factory open galley
- 2 Burner Jen Air Cooktop
- Frigidaire full-sized standup refrigerator/ freezer
- Nutone Mixer Garbage disposal
- Liquor & Wine Cabinet
- Amana Microwave Oven
- Dinette w/storage drawers beneath
- Stainless steel sink
- Ample Storage

Master Stateroom

- Walk-around queen berth
- Two night stands with storage
- Storage compartment under bed
- Hanging Locker
- Storage Drawers
- Overhead and Reading Lights
- Cruisair Air Conditioning System
- Overhead Speakers
- Overhead hatch
- Access to Head w/ separate stall shower
- Vanity/Sink with storage below
- Storage cabinet with mirror

Forward Guest Stateroom

- Over/Under Bunks
- Hanging Locker
- Storage Drawers
- Overhead and Reading Lights
- Overhead hatch
- Cruisair Air Conditioning System
- Head w/ separate stall shower
- Vanity/Sink with storage below
- Storage cabinet with mirror

Starboard Guest Stateroom

- Over/Under Bunks
- Hanging Locker
- Storage Drawers
- Cruisair Air Conditioning System
- Overhead and Reading lights
- Bedside table w/lamp
- Head w/ separate stall shower
- Vanity/Sink with storage below
- Storage cabinet with mirror There is access to this head from the companion way (Day head)

Companion Way

The companion way stairs lift for access to the Utility Room. There is also a storage locker on this level.

Deck Equipment

- Stainless steel bow rails
- Bow pulpit and anchor chute
- Windless Anchor
- Spare set of props
- Custom swim ladder

Flybridge

- Forward helm station with custom molded electronic boxes, full engine gauge package, controls, steering
- Two teak Rybovich Helm chairs
- Three sided enclosure
- Hatteras Monitor System. Port bench seating
- Starboard L-shaped bench seating
- Generator Start/Stop and Gauges
- **Aft helm station**; with full engine gauge package, controls, steering.
- Teak Rybovich Helm chairs
- Hatteras Monitor System
- Aft facing settee-starboard side
- (5) Aft flybridge rod holders

Electronics and Navigational Equipment

- Compass
- Furuno Radar
- Furuno Color Video Sounder
- Robertson Auto Pilot AP20
- Northstar 951X GPS
- Icom ICM-M126 VHF
- Standard Hailer
- EPIRB
- Datamarine International Depth
- Standard VHF Radio (Cockpit)
- Water temperature Gauge (Cockpit)
- Trim tab switches
- Rudder Angle Indicators

- Jensen Stereo w/speakers
- Generator Gauges
- Hydraulic Gear and Throttle Controls
- Tower controls, wheel and buggy top

Engine /Mechanical Equipment

- Detroit 12V71ti @ 650 HP w/3516 hrs
- Mechanical Engine Gauges
- 20 kw Northern Lights Generator w/sound shields-3000hrs
- Engine room Fireboy, fire extinguishing system
- Forward Utility Room w/ GE Washer, dryer, air conditioner compressors, storage and hot water heater

Electrical System

- DC:12V; 32V
- AC: 240 Volt; 120 Volts
- Batteries
- Battery Switches
- Battery Charger
- DOCKSIDE CABLES: (2) 50 Amp
- GENERATOR: Northern Lights 20kw
- Engine Alternators
-

Cockpit & Fishing Equipment

- Massive (175 sq. ft.) Cockpit
- Teak cockpit sole and covering boards
- Six (6) rod holders throughout covering boards
- Circulating Livewell
- Tackle Center w/Sink and Storage
- Large Rybovich Fighting Chair
- Cockpit Controls, Standard VHF Radio, Rudder Angle Indicator, Water temp.
- Custom storage, portside
- Transom door and gate
- Fresh water wash down
- Salt water wash down
- Rupp Outriggers
- Raised Marlin Tower

- Tower controls, wheel and buggy top
- Fish Box
- Port and Stbd access to the lazarette
- Ladder to fly bridge
- CAT Inlet, T.V.& Phone

Broker Remarks

In its day the Hatteras 60 Convertible was the ideal combination of all-out sportfishing machine and luxury cruising yacht. Her expansive three-stateroom, three-head layout places the master stateroom amidships and includes a walk-around queen berth. The salon, galley and dinette and are arranged on the deckhouse level and offers a spacious feeling do to the custom factory open galley. Additional features include a deep keel for prop protection, an open fly bridge with fore and aft helm stations, the massive cockpit (175 sq. ft) provides direct access to the well-arranged standup engine room. A separate utility room forward of the engine compartment houses the air-conditioning compressors, washer/dryer, and storage to spare.

Exclusions

- Owner's Personal Items

Исключения

При продаже яхты исключаются личные вещи владельца.

Отказ от ответственности

Компания предоставляет описание судна или яхты добросовестно, но не может гарантировать точность этой информации, а также не ручается за техническое состояние. Покупатель должен проинструктировать своих агентов или оценщиков исследовать представленную информацию более подробно, по собственному желанию. Продажа судна или яхты, изменение цены или снятие с продажи будет происходить без предварительного уведомления.

ФОТОГРАФИИ

Portside View



Cockpit



Bridge Helm



Electronics Panel



Salon - Looking forward



Salon looking Aft



Salon Seating Area



Dinette Area



Galley



Galley



Master Stateroom



Master Stateroom



Master Stateroom



Master Head



2nd Stateroom



2nd Head



Fwd Guest Stateroom



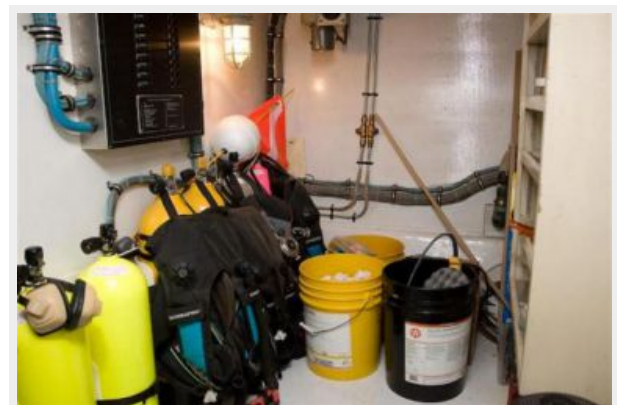
3rd Head



Washer/Dryer



Storage Area



Engine Room



Engine Room



Engine Room



Engine Room



Bow Railings



Transom



КОНТАКТЫ

Андрей Шестаков (Andrey Shestakov) – ведущий яхтенный брокер отдела продаж яхт и судов компании Shestakov Yacht Sales Inc. Официальный представитель Shestakov Yacht Sales Inc. для русскоговорящих клиентов в центральном офисе компании в Майами/Форт Лодердейл/Флорида/США.

Контактная информация

Email: andrey@shestakovyachtsales.com

Web: shestakovyachtsales.com

Телефоны

Краснодарский край: **+7(918)465-66-44**

США, Майами, Флорида: **+1(954)274-4435**

Время работы

Понедельник – Суббота: **9:00 - 21:00**
EDT

Воскресенье: **Закрито**

Адрес



Harbour Towne Marina, 850 NE 3rd St,
STE 213, Dania, FL 33004