

SUN CAT — SYMBOL



Builder: SYMBOL

Year Built: 1987

Model: Motor Yacht

Price: PRICE ON APPLICATION

Location: United States

LOA: 41' 0" (12.50m)

Beam: 14' 5" (4.39m)

Min Draft: 3' 8" (1.12m)

Cruise Speed: 12 Kts. (14 MPH)

Max Speed: 15 Kts. (17 MPH)

Our experienced yacht broker, Andrey Shestakov, will help you choose and buy a yacht that best suits your needs Sun Cat — SYMBOL from our catalogue. Presently, at Shestakov Yacht Sales Inc., we have a wide variety of yachts available on our sale's list. We also work in close contact with all the big yacht manufacturers from all over the world.

If you would like to buy a yacht Sun Cat — SYMBOL or would like help answering any questions concerning purchasing, selling or chartering a yacht, please call +1(954)274-4435

TABLE OF CONTENTS

TABLE OF CONTENTS	2
SPECIFICATIONS	6
Overview	6
Basic Information	6
Dimensions	6
Speed, Capacities and Weight	6
Accommodations	7
Hull and Deck Information	7
Engine Information	7
DETAILED INFORMATION	8
41' Symbol Overview	8
41' Symbol Vessel Walkthrough	8
41' Symbol Accommodations	8
41' Symbol Salon	8
41' Symbol Galley	8
41' Symbol Dining	9
41' Symbol Master Stateroom	9
41' Symbol Guest Stateroom	9
41' Symbol Sundeck	9
41' Symbol Flybridge	9
41' Symbol Audio And Visual Equipment	9
41' Symbol Electronics and Navigational Equipment	10
41' Symbol Electrical System	10
41' Symbol Engine /Mechanical Equipment	11
41' Symbol Deck Equipment	11
41' Symbol Tender	12
41' Symbol Safety And Fire Protection	12
41' Symbol Exclusions	12

Exclusions	12
Disclaimer	12
PHOTOS	13
41' Symbol forward profile	13
41' Symbol starboard foward profile	13
41' Symbol aft profile	13
41' Symbol anchor windlass	13
41' Symbol foredeck aft	14
41' Symbol foredeck	14
41' Symbol port side deck	14
41' Symbol starboard side deck	14
41' Symbol flybridge forward	15
41' Symbol flybridge aft	15
41' Symbol flybridge console	15
41' Symbol flybridge port	15
41' Symbol flybridge starboard seating photo1	15
41' Symbol flybridge starboard seating photo2	15
41' Symbol tender	16
41' Symbol sundeck photo1	16
41' Symbol sundeck photo2	16
41' Symbol sundeck port	16
41' Symbol sundeck starboard	16
41' Symbol sundeck forward	16
41' Symbol swimplatform	17
41' Symbol salon forward	17
41' Symbol salon aft	17
41' Symbol salon port	17
41' Symbol salon starboard aft liquor cabinet	18
41' Symbol salon starboard lounge chairs	18

41' Symbol salon starboard forward entertainment cabinet	18
41' Symbol galley photo1	18
41' Symbol galley photo2	19
41' Symbol dinette	19
41' Symbol master stateroom	19
41' Symbol master stateroom port	19
41' Symbol master stateroom head	19
41' Symbol master stateroom starboard	19
41' Symbol master stateroom shower	20
41' Symbol guest stateroom	20
41' Symbol guest stateroom head	20
41' Symbol guest stateroom shower	20
41' Symbol engine room access	21
41' Symbol engine room forward	21
41' Symbol engine room aft	21
41' Symbol port main engine	21
41' Symbol port gearbox	21
41' Symbol starboard main engine	21
41' Symbol starboard gearbox	22
41' Symbol Racor fuel filters	22
41' Symbol water heater	22
41' Symbol electrical panel	22
41' Symbol foredeck aft	22
41' Symbol generator soundbox	22
41' Symbol generator	23
CONTACTS	24
Contact details	24
Telephones	24
Office hours	24

Address

24

SPECIFICATIONS

Overview

Sun Cat is a 2 stateroom, 2 head, classic sundeck motoryacht with fuel efficient, naturally aspirated 210 hp CAT main engines. Sun Cat is unique in that both staterooms offer unique ensuite separate head and shower. She is a Great Loop veteran and ready for her next cruise. Price reduced!

Basic Information

Category: Motor Yacht

Sub Category: Sundeck

Model Year: 1987

Year Built: 1987

Country: United States

Coast Guard #: 1075090/South Portland, ME

Fly Bridge: Yes

Cockpit: Yes

Dimensions

LOA: 41' 0" (12.50m)

Beam: 14' 5" (4.39m)

Min Draft: 3' 8" (1.12m)

Speed, Capacities and Weight

Cruise Speed: 12 Kts. (14 MPH)

Max Speed: 15 Kts. (17 MPH)

Displacement: 25500 Pounds

Gross Tonnage: 30 Pounds

Water Capacity: 150 Gallons

Holding Tank: 40 Gallons

Fuel Capacity: 400 Gallons

Accommodations

Total Cabins: 2

Total Berths: 3

Sleeps: 6

Total Heads: 2

Hull and Deck Information

Hull Material: Fiberglass

Deck Material: Fiberglass Sandwich

Hull Configuration: Semi-Displacement

Hull Color: White

Hull Finish: Stainless Steel

Engine Information

Engines: 2

Manufacturer: Caterpillar

Model: 3208

Engine Type: Inboard

Fuel Type: Diesel

DETAILED INFORMATION

41' Symbol Overview

Sun Cat is a 2 stateroom, 2 head, classic sundeck motoryacht with fuel efficient, naturally aspirated 210 hp CAT main engines. Sun Cat is unique in that both staterooms offer ensuite separate head and shower. She is a Great Loop veteran and is ready for her next cruise. Price reduced!

41' Symbol Vessel Walkthrough

Entering the salon through the sliding glass door from the sundeck, you step down a few steps and find lounge chairs to starboard, sleeper sofa to port and entertainment center starboard forward. The steps to the full beam master stateroom are aft and forward you will step down a few steps into the galley to port and dinette to starboard. The guest stateroom is forward. There is teak parquet flooring throughout.

41' Symbol Accommodations

Sun Cat offers a full beam master stateroom aft with ensuite separate head and shower and a guest stateroom forward also offering a unique ensuite separate head and shower.

41' Symbol Salon

Sun Cat's large salon offers a liquor cabinet starboard aft, lounge chairs to starboard, entertainment cabinet starboard forward, sleeper sofa to port, teak parquet sole and large, opening side windows.

41' Symbol Galley

Sun Cat offers a large galley down layout, but the galley is quite open to the salon.

- Double stainless steel sink
- Princess 3-burner cooktop and stove (2006)
- Hamilton Beach Microwave oven (2012)
- Whirlpool trash compactor

- GE 115vac refrigerator/freezer (2010)
- Magma stainless steel grill on sundeck

41' Symbol Dining

Dining is available at the dinette across from the galley.

41' Symbol Master Stateroom

The master stateroom offers a centerline queen size berth, transom hatch, side windows, hanging lockers, storage cabinets, reading lights, fans and teak parquet sole. There is a separate head and shower also.

41' Symbol Guest Stateroom

The forward guest stateroom offers a double size berth to port, vanity/desk to starboard, shelves, 2 portlights and overhead deck hatch for plenty of natural light and ventilation, storage cabinets and separate shower to port and head to starboard.

41' Symbol Sundeck

Sun Cat's large sundeck is fully enclosed with a hardtop and Eisenglass and offers non-skid decks, wicker furniture, cabinetry forward and wing doors on each side to both side decks. There is a door aft to the ladder down to the swimplatform.

41' Symbol Flybridge

The flybridge offers a full helm console forward, L-shaped seating to starboard, a benchseat to port, Stidd helmseat, hardtop with full Eisenglass enclosure, non-skid decks, Coleman air conditioning unit in hardtop and molded-in steps down to the sundeck.

41' Symbol Audio And Visual Equipment

- Samsung TV in salon
- Zenith XBV342 DVD/VCR/MP3 player in salon
- Magnavox SDTV tuner in salon

- Radioshack speakers in salon
- Audiovox Sirius satellite radio on flybridge
- Dual MXDM66 AM/FM/CD stereo in salon and on flybridge
- Dual exterior speakers on flybridge

41' Symbol Electronics and Navigational Equipment

- Furuno Radar through Navnet chart plotter on flybridge (No GPS antenna or chart chips on Navnet)
- Danforth magnetic compass on flybridge
- Garmin GPSMap 441s chart plotter on flybridge
- Furuno LS-8000 LCD Color Sounder on flybridge
- Navico autopilot on flybridge
- Navico autopilot remote in salon
- Furuno GPS Navigator on flybridge
- Raymarine ST40 depth sounder on flybridge
- Standard Horizon Nova + VHF on flybridge
- Standard Horizon Ram Mic VHF in salon
- Rudder angle indicator on flybridge

41' Symbol Electrical System

- Kohler 8.5kW 8.5EFOZ generator with 1494 hours
- Xantrex TrueCharge 40 amp battery charger
- Xantrex 1500 watt inverter
- Heart Interface battery monitor

- 2 X 30 amp 50' shore power chords

41' Symbol Engine /Mechanical Equipment

- Twin Caterpillar 210 hp 3208 main engines
- Twin-Disc gearboxes
- Racor fuel filters
- Seaward 11 gallon stainless steel water heater
- Flojet 35 psi fresh water washdown pressure system pump
- Saniguard holding tank vent system
- Blackwater system replaced in 2002
- Marine Air Systems air conditioning system
- Morse engine controls
- Bennett trim tabs

Recent oil analysis reports available.

41' Symbol Deck Equipment

- Lewmar anchor windlass (2006)
- 44lb Delta anchor
- 35lb Danforth anchor
- 25lb Northill anchor
- 200' 5/16" anchor chain and 200' 9/32" nylon rode
- 100' spare nylon anchor rode
- 60' spare anchor chain
- 2 X foredeck deck storage boxes

-
- Stainless steel bow rail and deck hardware
 - Textalene window covers
 - Transom hot/cold water shower

41' Symbol Tender

- 2008 11' Brig RIB
- 2004 2-stroke 15hp Mercury outboard
- Tender davit

41' Symbol Safety And Fire Protection

- Rule bilge pumps
- Jabsco search light
- Smoke and carbon monoxide detector in salon

41' Symbol Exclusions

- Sellers' personal belongings
- Framed photo above dinette

Exclusions

Owner's personal belongings.

Disclaimer

The Company offers the details of this vessel or yacht in good faith but cannot guarantee or warrant the accuracy of this information nor warrant the condition of the vessel. A buyer should instruct his representatives, agents, or his surveyors, to investigate such details as the buyer desires validated. This vessel or yacht is offered subject to prior sale, price change, or withdrawal without notice.

PHOTOS

41' Symbol forward profile



41' Symbol starboard forward profile



41' Symbol aft profile



41' Symbol anchor windlass



41' Symbol foredeck



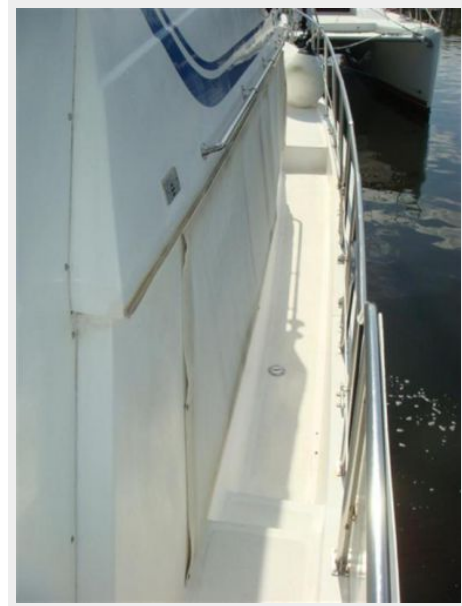
41' Symbol foredeck aft



41' Symbol port side deck



41' Symbol starboard side deck



41' Symbol flybridge forward



41' Symbol flybridge aft



41' Symbol flybridge console



41' Symbol flybridge port



**41' Symbol flybridge starboard seating
photo1**



**41' Symbol flybridge starboard seating
photo2**



41' Symbol tender



41' Symbol sundeck photo1



41' Symbol sundeck photo2



41' Symbol sundeck port



41' Symbol sundeck starboard



41' Symbol sundeck forward



41' Symbol swimplatform



41' Symbol salon forward



41' Symbol salon aft



41' Symbol salon port



41' Symbol salon starboard aft liquor cabinet



41' Symbol salon starboard lounge chairs



41' Symbol salon starboard forward entertainment cabinet



41' Symbol galley photo1



41' Symbol galley photo2



41' Symbol dinette



41' Symbol master stateroom



41' Symbol master stateroom port



41' Symbol master stateroom starboard



41' Symbol master stateroom head



41' Symbol master stateroom shower



41' Symbol guest stateroom



41' Symbol guest stateroom head



41' Symbol guest stateroom shower



41' Symbol engine room access



41' Symbol engine room forward



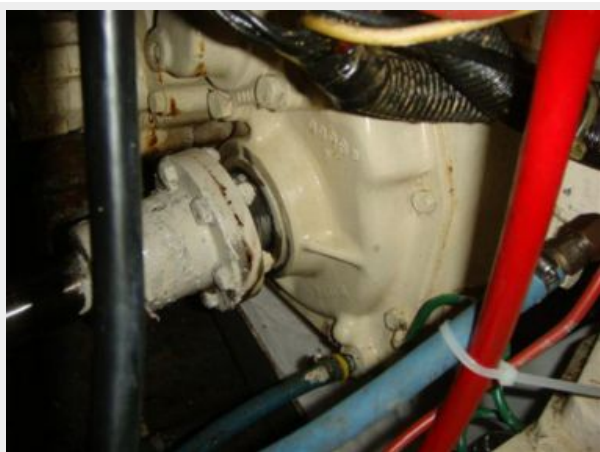
41' Symbol engine room aft



41' Symbol port main engine



41' Symbol port gearbox



41' Symbol starboard main engine



41' Symbol starboard gearbox



41' Symbol Racor fuel filters



41' Symbol water heater



41' Symbol electrical panel



41' Symbol foredeck aft



41' Symbol generator soundbox



41' Symbol generator



CONTACTS

Andrey Shestakov, leading yacht broker of the sales department of Shestakov Yacht Sales Inc. Shestakov Yacht Sales Inc., the official representative of the Miami/Fort Lauderdale FL headquarters.

Contact details

Email: andrey@shestakovyachtsales.com

Web: shestakovyachtsales.com/en/

Telephones

USA: +1(954)274-4435

Office hours

Monday – Saturday: **9:00 - 21:00** EDT

Sunday: **closed**

Address



Harbour Towne Marina, 850 NE 3rd St,
STE 213, Dania, FL 33004