

OCEAN SAPPHIRE — RODRIGUEZ BOAT BUILDERS



Builder: RODRIGUEZ BOAT BUILDERS

Year Built: 2010

Model: Motor Yacht

Price: PRICE ON APPLICATION

Location: Italy

LOA: 134' 11" (41.10m)

Beam: 27' 7" (8.40m)

Min Draft: 0' 0" (0.00m)

Max Draft: 7' 11" (2.40m)

Cruise Speed: 14 Kts. (16 MPH)

Max Speed: 16 Kts. (18 MPH)

Our experienced yacht broker, Andrey Shestakov, will help you choose and buy a yacht that best suits your needs **Ocean Sapphire — RODRIGUEZ BOAT BUILDERS** from our catalogue. Presently, at Shestakov Yacht Sales Inc., we have a wide variety of yachts available on our sale's list. We also work in close contact with all the big yacht manufacturers from all over the world.

If you would like to buy a yacht **Ocean Sapphire — RODRIGUEZ BOAT BUILDERS** or would like help answering any questions concerning purchasing, selling or chartering a yacht, please call **+1(954)274-4435**

TABLE OF CONTENTS

TABLE OF CONTENTS	2
SPECIFICATIONS	3
Overview	3
Basic Information	3
Dimensions	3
Speed, Capacities and Weight	3
Accommodations	4
Hull and Deck Information	4
Engine Information	4
PHOTOS	5
CONTACTS	8
Contact details	8
Telephones	8
Office hours	8
Address	8

SPECIFICATIONS

Overview

Basic Information

Category: Motor Yacht

Model Year: 2009

Year Built: 2010

Refit Year: 1700

Country: Italy

Cockpit: Yes

Dimensions

LOA: 134' 11" (41.10m)

LWL: 0' 0" (0.00m)

LOD: 0' 0" (0.00m)

Beam: 27' 7" (8.40m)

Min Draft: 0' 0" (0.00m)

Max Draft: 7' 11" (2.40m)

Clearance: 0' 0" (0.00m)

MFG Length: 134' 11" (41.10m)

Speed, Capacities and Weight

Cruise Speed: 14 Kts. (16 MPH)

Cruise Speed RPM: 1 Kts.

Cruise Speed Range: 1

Max Speed: 16 Kts. (18 MPH)

Max Speed RPM: 1 Kts.

Max Speed Range: 1 Kts.

Displacement: 205 Pounds

Gross Tonnage: 1 Pounds

Water Capacity: 2113.376416 Gallons

Fuel Capacity: 6868.473352 Gallons

Fuel Consumption: 0.264172052 Gallons

Accommodations

Total Cabins: 5

Total Berths: 1

Sleeps: 12

Total Heads: 1

Crew Cabin: 1

Crew Berths: 1

Crew Sleeps: 1

Crew Heads: 1

Hull and Deck Information

Hull Material: Aluminum

Engine Information

Engines: 2

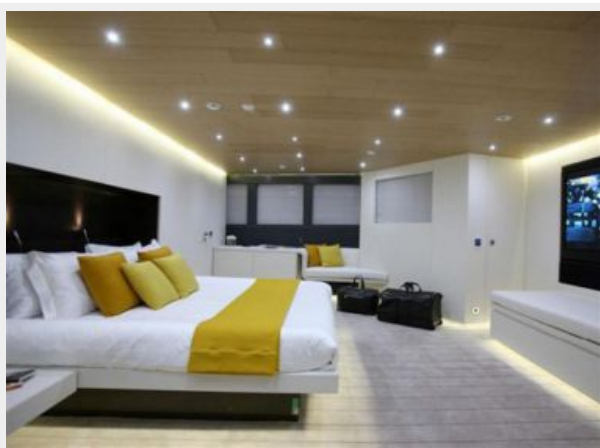
Manufacturer: Caterpillar

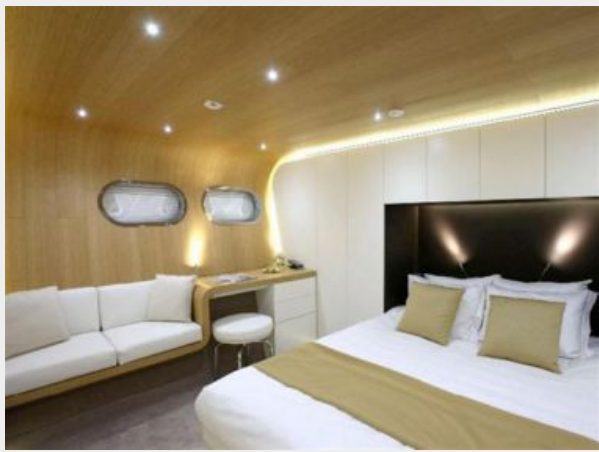
Model: C32

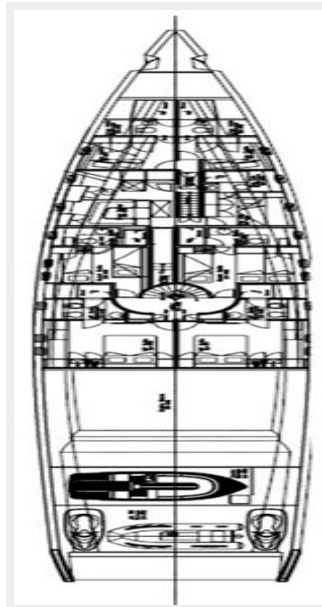
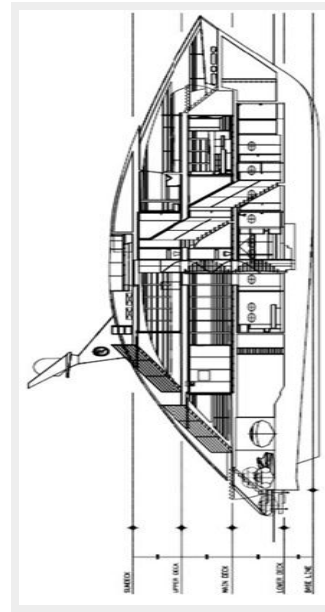
Engine Type: Inboard

Fuel Type: Diesel

PHOTOS







CONTACTS

Andrey Shestakov, leading yacht broker of the sales department of Shestakov Yacht Sales Inc. Shestakov Yacht Sales Inc., the official representative of the Miami/Fort Lauderdale FL headquarters.

Contact details

Email: andrey@shestakovyachtsales.com

Web: shestakovyachtsales.com/en/

Telephones

USA: +1(954)274-4435

Office hours

Monday – Saturday: **9:00 - 21:00** EDT

Sunday: **closed**

Address



Harbour Towne Marina, 850 NE 3rd St,
STE 213, Dania, FL 33004