

## SECRET LOVE — AMELS



**Builder:** [AMELS](#)

**Year Built:** 1990

**Model:** Commercial Vessel

**Price:** PRICE ON APPLICATION

**Location:** Spain

**LOA:** 119' 10" (36.50m)

**Beam:** 25' 4" (7.70m)

**Max Draft:** 8' 7" (2.60m)

**Cruise Speed:** 11 Kts. (13 MPH)

**Max Speed:** 13 Kts. (15 MPH)

Our experienced yacht broker, Andrey Shestakov, will help you choose and buy a yacht that best suits your needs **SECRET LOVE — AMELS** from our catalogue. Presently, at Shestakov Yacht Sales Inc., we have a wide variety of yachts available on our sale's list. We also work in close contact with all the big yacht manufacturers from all over the world.

If you would like to buy a yacht **SECRET LOVE — AMELS** or would like help answering any questions concerning purchasing, selling or chartering a yacht, please call **+1(954)274-4435**

---

# TABLE OF CONTENTS

---

TABLE OF CONTENTS	2
SPECIFICATIONS	3
Overview	3
Basic Information	3
Dimensions	3
Speed, Capacities and Weight	3
Accommodations	4
Hull and Deck Information	4
Engine Information	4
DETAILED INFORMATION	5
Accommodations	5
Exclusions	10
Disclaimer	10
PHOTOS	11
SL Master Cabin	11
SL Bathroom	11
SL Salon	11
SL Jacuzzi	11
SL Sun Deck	11
CONTACTS	12
Contact details	12
Telephones	12
Office hours	12
Address	12

---

# SPECIFICATIONS

---

## Overview

---

SECRET LOVE a pedigree motor yacht was built in Makkum by Amels Shipyard, Holland. The classic maple wood interior was designed by Struik and Hamerslag while the exterior and engineering works were implemented by the Amels team. This modern classic with a canoe stern and modern stabilisers is equipped for comfortable cruising for her new owner. Price: 3,950.000 VAT paid.

## Basic Information

---

**Category:** Commercial Vessel

**Model Year:** 1990

**Year Built:** 1990

**Refit Year:** 2006

**Country:** Spain

## Dimensions

---

**LOA:** 119' 10" (36.50m)

**Beam:** 25' 4" (7.70m)

**Max Draft:** 8' 7" (2.60m)

## Speed, Capacities and Weight

---

**Cruise Speed:** 11 Kts. (13 MPH)

**Cruise Speed Range:** 4000

**Max Speed:** 13 Kts. (15 MPH)

**Displacement:** 198416.0358 Pounds

**Gross Tonnage:** 298 Pounds

**Water Capacity:** 2430.3828784 Gallons

**Holding Tank:** 2060.5420056 Gallons

**Fuel Capacity:** 11359.398236 Gallons

**Fuel Consumption:** 29.05892572 Gallons

---

## Accommodations

---

**Total Cabins:** 4

**Total Berths:** 8

**Sleeps:** 8

**Total Heads:** 5

**Crew Cabin:** 4

**Crew Berths:** 8

**Crew Sleeps:** 8

**Crew Heads:** 4

---

## Hull and Deck Information

---

**Hull Material:** Iron

**Deck Material:** Teak over Aluminum

**Hull Configuration:** Full Displacement

**Hull Color:** White

**Hull Designer:** Amels Holland

**Exterior Designer:** Amels Holland

**Interior Designer:** Struik & Hamerslag

---

## Engine Information

---

**Engines:** 2

**Manufacturer:** Caterpillar

**Model:** 3412 DITA

**Engine Type:** Inboard

**Fuel Type:** Diesel

---

# DETAILED INFORMATION

---

## Accommodations

---

### GENERAL OVERVIEW

SECRET LOVE a luxurious pedigree motor yacht was built in Makkum by Amels shipyard, Holland. The classic maple wood interior was designed by Struik & Hamerslag while exterior and engineering works were implemented by the Amels team. Privacy, elegance, clean lines and a traditional canoe stern make this yacht a modern day classic meeting the needs of her owners and the potential requirements of charterers alike. Equipped for comfort with modern stabilizers guests can visit many of the best locations on offer today

### GUEST AREAS

**SALON:** Soft tone colors and lighting, bird's eye maple woodwork and large leather sofas make this a truly relaxing area after a day on the water. Direct access to the after deck dining area and large panoramic windows throughout.

**DINING:** Intimate yet spacious dining area with eight elegant chairs.

**SUN DECK:** Designed for privacy and equipped with a four person Jacuzzi. This deck is serviced with a changing room, shower and WC facilities.

**LOWER AFT DECK:** With a canoe shaped stern and direct access to the salon this is ideal area for external dining while at anchor.

**AFT SUN DECK:** This spacious deck area has all the facilities, including sun loungers and its own pantry, to provide the service required to offer guests a perfect moment of entertainment or relaxation.

---

## ACCOMODATION

**MASTER CABIN:** Independent and located forward the full beam Master cabin features king size bed with an additional massage as required. The suite is served by en suite bathroom with full bath, independent shower, double basin and marble finish throughout.

The Master cabin is spaciously equipped with his and her wardrobes and enjoys views out on both sides of the yacht.

**VIP CABIN:** Well positioned aft the full beam VIP cabin enjoys privacy at all times. Equipped with Queen size bed and served with en suite bathroom with full facilities including bath, basin and marble decor

**GUEST CABINS:** Two spacious and well equipped guest cabins are situated aft both furnished with twin beds and en suit shower rooms.

## SPECIFICATIONS

TYPE:	Motor Yacht
BUILDER:	Amels Holland b.v.
DESIGNER INTERIOR:	Struik & Hamerslag
DESIGNER EXTERIOR:	Amels Holland b.v.
YEAR BUILT:	1990
CONSTRUCTION:	Steel Hull & Aluminum Super
CLASSIFICATION:	Lloyds Register
LENGTH OVERALL:	36.50m (119'75")
BEAM:	7.70 m (25'26')
DRAFT:	2.65 m (6'69")
GROSS TONNAGE:	303 (Rcnt survey by Marshal Is. 298)

---

NET TONNAGE:	90
HULL TYPE & PROPULSION:	Displacement / Twin Screw
MAXIMUM SPEED:	13 Knots
CRUISING SPEED:	11 Knots
RANGE (APPROX.):	4.000 nm at 12 Knots
CONSUMPTION:	110 Liter/hr
ENGINES:	2 x Caterpillars 3412 DITA Diesel
	(2 x 500Kw) Total HP 1.360
GENERATORS:	2 x Caterpillars 3304 B-SR (2 x 106Kw)
GEARBOX:	Reintjes
BOW THRUSTER:	Johan Dane B.V. PD 52-600
STABILIZERS:	Koop Nautic

#### ADDITIONAL MACHINERY

WATER MAKER:	2 x H.E.M. 35-2400
AIR-CONDITIONING:	Heinen & Hopman OEA88-100.092
DIVE COMPRESSOR:	Bauer
OIL/WATER SEPARATOR:	Faset

#### TANKS & CAPACITIES (All details provided are approximations)

FUEL:	43,000 Ltrs
FRESH WATER:	9,200 Ltrs
GREY WATER:	3,600 Ltrs
BLACK WATER:	3.000 Ltrs

---

SLUDGE: 1,200 Ltrs

NAVIGATION - COMMUNICATION- ENTERTAINMENT

AUTOPILOT: Robertson

RADAR: Furuno

ELECTRONIC CHART SYSTEM: Transas

INDICATORS: Simrad

SONAR: Datamarine

INMARSAT: Fleet 250

VHF: Sailor

GSM: Ericsson

V SAT: TBH

C TEL: Scanti

INTERCOM: Ericsson

ALARM: Aeldsyteem AS 2000-2

DECK & MISC EQUIPMENT

WINDLASS: Steen 23.48

ANCHORS: 2

STEERING GEAR: Tenfjord 11452

CRANES: Snijder Hasselt

BUOYS & FENDERS: 10

SEWAGE SYSTEM: Tecnicomar/Ecomar

WING COMMAND: NABCO



---

## TOYS & TENDERS

TENDER 1:	19ft Nautica International RIB / Yamaha 150hp / 612kg
TENDER 2:	Jetski wave runner 3 seater 1300
TOY 1:	Scuba equipment for 2 persons inc 2 tanks
TOY 2:	2 x Blade fish (Model 5000)
TOY 3:	O'Brian Ski equipment; X1 wake board, X2 skis, X1 Slalom ski
TOY 4:	O'Brian Donut Super Screamer
TOY 5:	Penn deep sea fishing equipment for 3 persons

## ENTERTAINMENT SYSTEMS

GENERAL:	Pioneer with Bose speakers / Sat TV
SALON: installation	Large LCD TV, DVD, CD, Pioneer HiFi. Bose speaker
MASTER CABIN: installation	Sharp LCD TV, DVD, CD, Pioneer HiFi Bose speaker
GUEST CABINS: installation	Sharp LCD TV, DVD, CD, Pioneer HiFi Bose speaker
EXTERIOR:	Pioneer HiFi. Bose speaker installation

## GALLEY - PANTRY – LAUNDRY

**OVERALL GENERAL INFO:** Good storage, service and preparation areas for a vessel of this size including walk-in freezer, walk-in fridge and ample dry store rooms. Well-equipped galley with utensils required for service

---

FRIDGE:	Miele Double
FREEZER:	Miele
ICEMAKER:	Hoshizaki
DISHWASHER:	2 x Miele G7856
HOB:	Ambach Stainless
OVEN:	Ambach Stainless
OTHER:	3 x Stainless sinks and stainless work tops
WASHING MACHINE:	2 x Miele Professional PW5065
TUMBLE DRYER:	2 x Miele Professional PT5135 C
OTHER:	Bosch Professional Microwave and Oven/Grill

## SECURITY - SAFETY - FIRE FIGHTING SYSTEMS

CCTV:	Monacor
ALARM SYSTEM:	Aeldsyteem
LIFE RAFTS:	LDF 2X16
FIRE DETECTION SYSTEM:	Autotronica

## Exclusions

---

Owner's personal belongings.

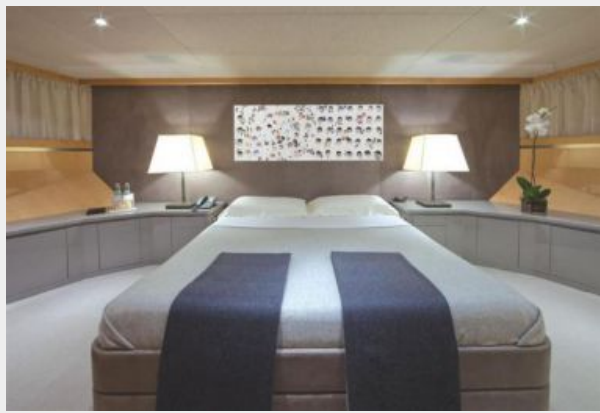
## Disclaimer

---

The Company offers the details of this vessel or yacht in good faith but cannot guarantee or warrant the accuracy of this information nor warrant the condition of the vessel. A buyer should instruct his representatives, agents, or his surveyors, to investigate such details as the buyer desires validated. This vessel or yacht is offered subject to prior sale, price change, or withdrawal without notice.

# PHOTOS

**SL Master Cabin**



**SL Bathroom**



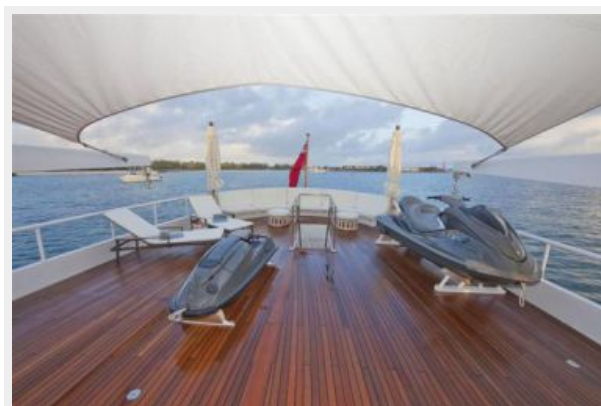
**SL Salon**



**SL Jacuzzi**



**SL Sun Deck**



---

# CONTACTS

---

Andrey Shestakov, leading yacht broker of the sales department of Shestakov Yacht Sales Inc. Shestakov Yacht Sales Inc., the official representative of the Miami/Fort Lauderdale FL headquarters.

---

## Contact details

---

Email: **andrey@shestakovyachtsales.com**

Web: [shestakovyachtsales.com/en/](http://shestakovyachtsales.com/en/)

---

## Telephones

---

USA: +1(954)274-4435

---

## Office hours

---

Monday – Saturday: **9:00 - 21:00** EDT

Sunday: **closed**

---

## Address

---



Harbour Towne Marina, 850 NE 3rd St,  
STE 213, Dania, FL 33004