

## ALLUHRA — LUHRS



**Builder:** [LUHRS](#)

**Year Built:** 1995

**Model:** Sport Fisherman

**Price:** PRICE ON APPLICATION

**Location:** United States

**LOA:** 32' 0" (9.75m)

**Beam:** 13' 0" (3.96m)

**Max Draft:** 3' 1" (0.94m)

Our experienced yacht broker, Andrey Shestakov, will help you choose and buy a yacht that best suits your needs **Alluhra — LUHRS** from our catalogue. Presently, at Shestakov Yacht Sales Inc., we have a wide variety of yachts available on our sale's list. We also work in close contact with all the big yacht manufacturers from all over the world.

If you would like to buy a yacht **Alluhra — LUHRS** or would like help answering any questions concerning purchasing, selling or chartering a yacht, please call **+1(954)274-4435**

# TABLE OF CONTENTS

TABLE OF CONTENTS	2
SPECIFICATIONS	4
Overview	4
Basic Information	4
Dimensions	4
Speed, Capacities and Weight	4
Accommodations	4
Hull and Deck Information	5
Engine Information	5
DETAILED INFORMATION	6
Accommodations	6
Galley	6
Electronics	6
Electrical Equipment	6
Mechanical	7
Deck Equipment	7
Fly Bridge	7
Cockpit: Fishing/Diving	8
Other Features	8
Exclusions	8
Disclaimer	8
PHOTOS	9
BOW VIEW	9
PORT QUARTER AFT	9
STERN VIEW	9
BOW VIEW FROM FB	9
HELM	9
FB ELECTRONICS BOX	9

HELM SEAT	10
CENTERLINE BERTH FORWARD	10
FORWARD CABIN STARBOARD VIEW	10
FORWARD CABIN PORT VIEW	10
LARGE HEAD COMPARTMENT	10
GALLEY	10
GALLEY FROM SALON	11
GALLEY CABIN SOLE	11
INTERIOR VIEW W/CONV SOFA- STARBOARD & DINETTE- PORT	11
SALON PORT SIDE DINETTE	11
ELECTRIC PANEL	11
MAIN SALON OVERHEAD- PORT	11
MAIN SALON OVERHEAD- STARBOARD	12
VIEW TO INTERIOR FROM COCKPIT	12
GENERATOR COMPARTMENT	12
SALON CABIN SOLE-W/O CARPET	12
YANMAR DIESEL	12
COCKPIT CABINET & ICE MAKER	12
COCKPIT COLD PLATE BOX	13
COCKPIT FIGHTING CHAIR	13
CONTACTS	14
Contact details	14
Telephones	14
Office hours	14
Address	14

---

# SPECIFICATIONS

---

## Overview

---

NOTE PRICE REDUCTION TO \$71,500.00

ALLURAH was purchased by the present owner in 2001. Since his ownership, he has maintained a complete ships log detailing all maintenance, service and upgrades. She was repowered by the previous owner with new 300 hp Yanmar 6LP-STE diesels. In 6/2013 at 1124 engine hours, both engines had a total "top end" overhaul to the specs of the newer Yanmar 315. ALLURAH is in excellent condition and very well equipped for fishing, economical coastal cruising or comfortable living dockside or at anchor.

---

## Basic Information

---

**Category:** Sport Fisherman

**Model Year:** 1995

**Year Built:** 1995

**Country:** United States

**Fly Bridge:** Yes

**Cockpit:** Yes

---

## Dimensions

---

**LOA:** 32' 0" (9.75m)

**Beam:** 13' 0" (3.96m)

**Max Draft:** 3' 1" (0.94m)

---

## Speed, Capacities and Weight

---

**Displacement:** 15000 Pounds

**Water Capacity:** 60 Gallons

**Fuel Capacity:** 300 Gallons

---

## Accommodations

---

**Total Cabins:** 1

**Total Heads:** 1

---

## Hull and Deck Information

---

**Hull Material:** Fiberglass

**Hull Finish:** Plastic

---

## Engine Information

---

**Engines:** 2

**Manufacturer:** Yanmar

**Model:** 6LP-STE

**Engine Type:** Inboard

**Fuel Type:** Diesel

---

## DETAILED INFORMATION

---

### Accommodations

---

Enter salon thru double doors with queen Futon sleeper couch to starboard and a pullman style dinette to port. Toshiba TV with built-in DVD/external JBL speakers/added sound proofing in overhead. Down galley on port side with head/shower to starboard. Forward to master with queen bed on center. Three drawer chest, hanging lockers, full length shelves port and starboard. Storage under queen bed/hatch to bow.

- LED/Fluorescent lighting throughout and courtesy lights
- 12V oscillating fan-fwd cabin
- Full interior curtains
- Dual option exterior salon canvas-(see through or blackout)

### Galley

---

Galley Down w/ Three glassware storage compartments, large/deep two shelf pantry, liquor cabinet.

- Two burner electric stove top
- Panasonic Microwave oven
- Nova Cool Ref/Fzr-12/110Volt
- Single SS sink
- 6 Gallon water heater

### Electronics

---

- Flybridge Console: Standard Horizon Eclipse DSC VHF w/18' Shakespear 4018 Antenna-New 1/2013 Raytheon ST 60 Depth Finder-New 1/2013 Raymarine P70R Autopilot-New 1/2013 Jensen AM/FM/CD/WX Stereo-New 1/2013 Ritchie Powerdamp Compass
- Flybridge Electronic Box: Furuno FCV 585 Fish Finder-New 1/2013 Garmin GPSmap 4210 Color Chart Plotter w/"Fisheye" G2 Vision Card Software-New 1/2013 Furuno 1751 MK II
- Entertainment: Salon: Toshiba Flat Panel TV/DVD player-Salon Pioneer AM/FM/CD Stereo Forward Cabin: Toshiba Flat Panel TV/DVD player TV antenna

### Electrical Equipment

---

Single 120V/30Amp Shore Power

- Northern Lights 5KW generator w/1133 hrs.

- Northern Lights Parts Kit for generator
- Full AC/DC LED electric panel w/Reverse Polarity Feature-New 1/2013
- Batteries & Charging Xantrex Truecharge-40 amp battery charger Xantrex Truecharge-2 Battery Monitor (electric panel) Batteries: Two Grp 29 house & engine start One Grp 27 generator start

---

## Mechanical

---

Twin Yanmar 300hp diesels with 1124 hrs port, 1126 hrs starboard (stbd hr meter reads 1202 since the ignition switch was accidentally left on while in the yard in 2011). In January 2013 both engines had a top end overhaul including: milled heads, new intake and exhaust valves, springs and keepers, rockers. Injectors, gaskets and seals. Serviced cooling system. R&R props to Yanmar specs.

- Yanmar Long Range and Short Range Parts Kits
- Complete set of engine hoses
- Velvet-Drive engine controls-(throttle & shifters)
- 19X24 Nibral Props w/cup
- 1.5" Aquamet SS Shafts w/Shaft Spurs
- Dripless shaft seals-10/2013
- Dual Racor 900FG fuel filters w/vacuum gauges-engines
- Single Racor R24T fuel filter-generator
- Lenco pocket Trim Tabs
- Cruiseair Rev Cycle Air Conditioning w/digital controls
- Three Rule auto/manual bilge pumps
- Oil change system
- Jabsco electric toilet w/macerator

---

## Deck Equipment

---

- Ground Tackle: Simpson Lawrence electric anchor windlass w/FB controls Delta anchor w/chain and rode
- Four fender holders on bow pulpit
- FG swim platform w/ladder & Inflatable Dingy Cradle Sys (no inflatable)
- Deck hatch-Fwd Cabin
- Flybridge, Cockpit and Fore Deck Spot Lighting

---

## Fly Bridge

---

- Full enclosure-four sides-New 2013
- Two Todd helm chairs w/covers

- Bench seating in front of helm console w/storage under

---

## Cockpit: Fishing/Diving

---

- Transom door
- Starboard cockpit cabinet w/single sink, cutting board and U-line Ice Maker
- Port cockpit cabinet w/top loading cold plate fwr
- Pressure sea water and fresh water washdown
- Fishing: Two Position Single Line Rupp Outriggers Down rigger Todd Fighting chair  
Twelve rod holders-Interior Salon overhead Ten cockpit rod holders and rocket launchers  
Cockpit fishbox
- Dive: Cockpit: Ten folding dive tank racks

---

## Other Features

---

- Complete detailed service, maintenance and equipment update log since 2001
- Solid FG hull
- Life Sling
- LED Navigation Lights
- Marinco Remote Spotlight
- Flybridge Dry Pack Storage
- Twin Trumpet Elect Horns
- All Bronze Thru-Hull Fittings
- SS Fuel and Water Vents
- Last bottom job-4/2013 w/Seahawk Tropikote (black)

---

## Exclusions

---

Owner's personal belongings.

---

## Disclaimer

---

The Company offers the details of this vessel or yacht in good faith but cannot guarantee or warrant the accuracy of this information nor warrant the condition of the vessel. A buyer should instruct his representatives, agents, or his surveyors, to investigate such details as the buyer desires validated. This vessel or yacht is offered subject to prior sale, price change, or withdrawal without notice.



# PHOTOS

**BOW VIEW**



**PORT QUARTER AFT**



**STERN VIEW**



**BOW VIEW FROM FB**



**HELM**



**FB ELECTRONICS BOX**



**HELM SEAT**



**CENTERLINE BERTH FORWARD**



**FORWARD CABIN STARBOARD VIEW**



**FORWARD CABIN PORT VIEW**



**LARGE HEAD COMPARTMENT**



**GALLEY**

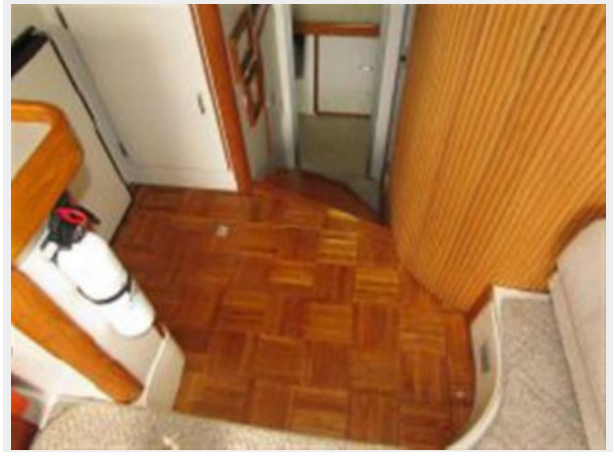




**GALLEY FROM SALON**



**GALLEY CABIN SOLE**



**INTERIOR VIEW W/CONV SOFA-  
STARBOARD & DINETTE- PORT**



**SALON PORT SIDE DINETTE**



**ELECTRIC PANEL**



**MAIN SALON OVERHEAD- PORT**



**MAIN SALON OVERHEAD- STARBOARD**



**VIEW TO INTERIOR FROM COCKPIT**



**GENERATOR COMPARTMENT**



**SALON CABIN SOLE-W/O CARPET**



**YANMAR DIESEL**



**COCKPIT CABINET & ICE MAKER**



### COCKPIT COLD PLATE BOX



### COCKPIT FIGHTING CHAIR



---

# CONTACTS

---

Andrey Shestakov, leading yacht broker of the sales department of Shestakov Yacht Sales Inc. Shestakov Yacht Sales Inc., the official representative of the Miami/Fort Lauderdale FL headquarters.

---

## Contact details

---

Email: [andrey@shestakovyachtsales.com](mailto:andrey@shestakovyachtsales.com)

Web: [shestakovyachtsales.com/en/](http://shestakovyachtsales.com/en/)

---

## Telephones

---

USA: +1(954)274-4435

---

## Office hours

---

Monday – Saturday: **9:00 - 21:00** EDT

Sunday: **closed**

---

## Address

---



Harbour Towne Marina, 850 NE 3rd St,  
STE 213, Dania, FL 33004