

KATHERINE — BERTRAM



Builder: BERTRAM

Year Built: 1988

Model: Cruiser

Price: PRICE ON APPLICATION

Location: United States

LOA: 33' 0" (10.06m)

Beam: 12' 7" (3.81m)

Max Draft: 3' 0" (0.91m)

Our experienced yacht broker, Andrey Shestakov, will help you choose and buy a yacht that best suits your needs **Katherine — BERTRAM** from our catalogue. Presently, at Shestakov Yacht Sales Inc., we have a wide variety of yachts available on our sale's list. We also work in close contact with all the big yacht manufacturers from all over the world.

If you would like to buy a yacht **Katherine — BERTRAM** or would like help answering any questions concerning purchasing, selling or chartering a yacht, please call **+1(954)274-4435**

TABLE OF CONTENTS

| | |
|--------------------------------------|---|
| TABLE OF CONTENTS | 2 |
| SPECIFICATIONS | 4 |
| Basic Information | 4 |
| Dimensions | 4 |
| Speed, Capacities and Weight | 4 |
| Hull and Deck Information | 4 |
| Engine Information | 4 |
| DETAILED INFORMATION | 5 |
| Additional information | 5 |
| Mechanical Equipment and Engine Room | 5 |
| Deck Equipment | 5 |
| Electronics and Navigation Equipment | 5 |
| Accommodations | 6 |
| Exclusions | 6 |
| Exclusions | 6 |
| Disclaimer | 6 |
| PHOTOS | 7 |
| Salon Seating and Entrance | 7 |
| Salon Seating | 7 |
| Salon Seating | 7 |
| Lower Helm | 7 |
| Galley | 7 |
| Master Vee Berth | 7 |
| Guest Stateroom | 8 |
| Master Vee Berth | 8 |
| Guest Stateroom | 8 |
| Head | 8 |
| Head | 9 |

| | |
|--------------------------------------|----|
| Head | 9 |
| Helm | 9 |
| Forward Flybridge Seating | 9 |
| Cockpit | 9 |
| Cockpit | 9 |
| Cockpit and Flybridge | 10 |
| Cockpit and Stairs to Bridge | 10 |
| Mechanical Equipment and Engine Room | 10 |
| Mechanical Equipment and Engine Room | 10 |
| Cockpit | 11 |
| Port Profile | 11 |
| Port Profile | 11 |
| CONTACTS | 12 |
| Contact details | 12 |
| Telephones | 12 |
| Office hours | 12 |
| Address | 12 |

SPECIFICATIONS

Basic Information

Category: Cruiser

Model Year: 1988

Year Built: 1988

Country: United States

Fly Bridge: Yes

Cockpit: Yes

Dimensions

LOA: 33' 0" (10.06m)

Beam: 12' 7" (3.81m)

Max Draft: 3' 0" (0.91m)

Speed, Capacities and Weight

Displacement: 22800 Pounds

Hull and Deck Information

Hull Material: Fiberglass

Engine Information

Engines: 2

Manufacturer: Mercruiser

Model: 7.4L

Engine Type: Inboard

Fuel Type: Gas

DETAILED INFORMATION

Additional information

- Fresh Water Since New
- Carpet and Teak & Holly Laminate new in 2008
- Forward Cabin Mattress new in 2008
- Bottom Paint - Spring 2010
- Spare Props - never used

Mechanical Equipment and Engine Room

- Onan 6.5kW Generator
- Hot Water Tank
- Trim Tabs
- Vapor Detector
- Fire Suppression System
- (3) Bilge Pumps

Deck Equipment

- Swim Platform w/ Ladder
- Drop Curtain on Bridge
- Full Enclosure
- Windscreen - New 2008
- Bimini Top
- Helm Cover on Bridge
- Shore Power
- Dockside Water connection
- Search Light
- Radar Mast - swings down for clearance

Electronics and Navigation Equipment

- Furuno Radar
- Furuno Plotter
- Furuno Depth Sounder - New 2009
- ICOM 125 VHF Radio (lower)

- Cetrek Depth/Speed (lower)

Accommodations

- 3-Burner Stove
- Microwave/Convection Oven
- Norcold Refrigerator
- Electric Head
- Pressure Water System
- CO Detector

Exclusions

Owner's personal items.

Exclusions

Owner's personal belongings.

Disclaimer

The Company offers the details of this vessel or yacht in good faith but cannot guarantee or warrant the accuracy of this information nor warrant the condition of the vessel. A buyer should instruct his representatives, agents, or his surveyors, to investigate such details as the buyer desires validated. This vessel or yacht is offered subject to prior sale, price change, or withdrawal without notice.

PHOTOS

Salon Seating and Entrance



Salon Seating



Salon Seating



Lower Helm



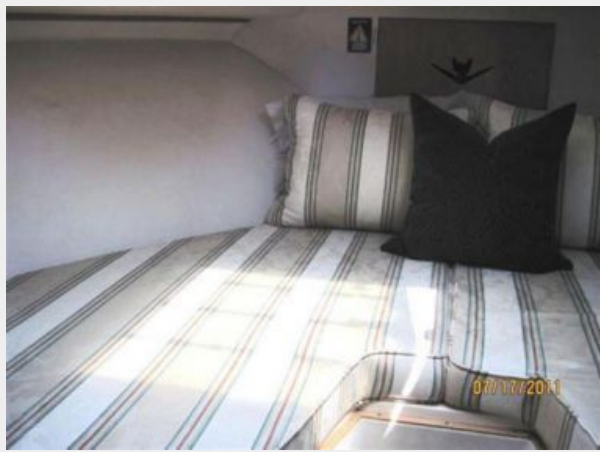
Galley



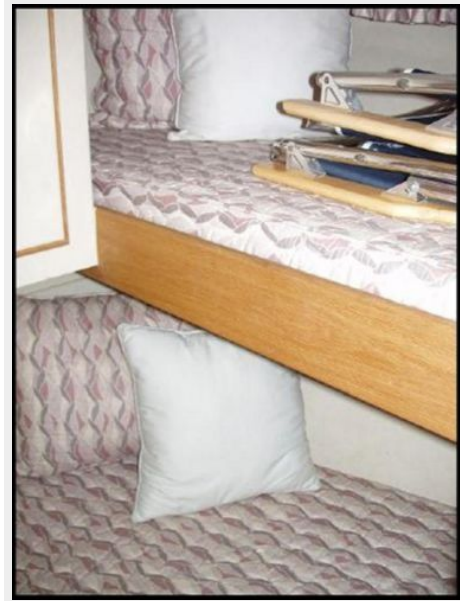
Master Vee Berth



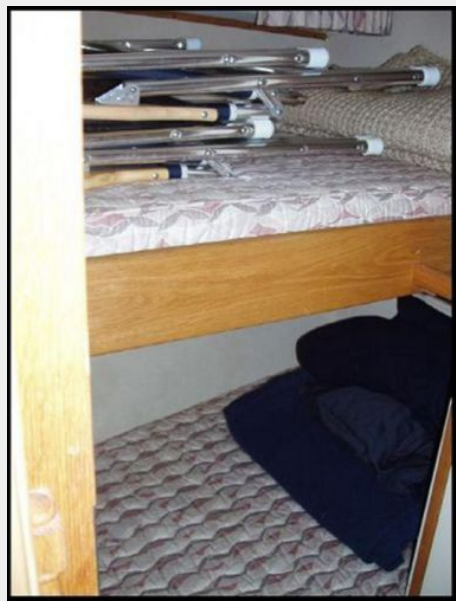
Master Vee Berth



Guest Stateroom



Guest Stateroom



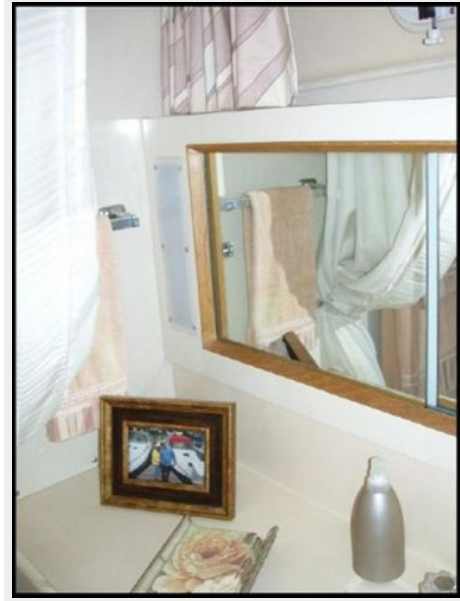
Head



Head



Head



Helm



Forward Flybridge Seating



Cockpit



Cockpit



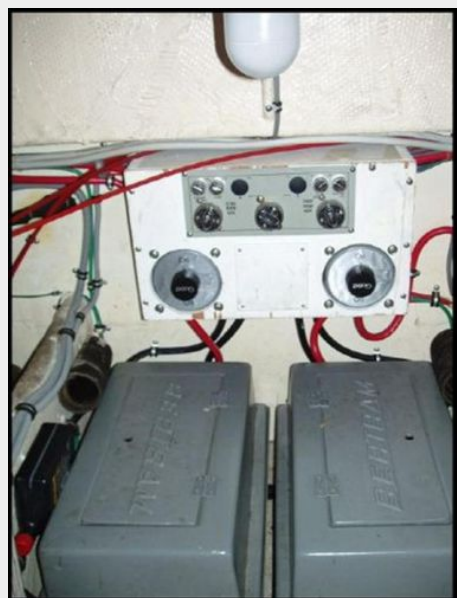
Cockpit and Stairs to Bridge



Cockpit and Flybridge



Mechanical Equipment and Engine Room



Mechanical Equipment and Engine Room



Port Profile



Cockpit



Port Profile



CONTACTS

Andrey Shestakov, leading yacht broker of the sales department of Shestakov Yacht Sales Inc. Shestakov Yacht Sales Inc., the official representative of the Miami/Fort Lauderdale FL headquarters.

Contact details

Email: andrey@shestakovyachtsales.com

Web: shestakovyachtsales.com/en/

Telephones

USA: +1(954)274-4435

Office hours

Monday – Saturday: **9:00 - 21:00** EDT

Sunday: **closed**

Address



Harbour Towne Marina, 850 NE 3rd St,
STE 213, Dania, FL 33004