

## LOLA K — VR YACHTS



**Builder:** [VR Yachts](#)

**Year Built:** 2003

**Model:** Cruising Sailboat

**Price:** PRICE ON APPLICATION

**Location:** Italy

**LOA:** 65' 0" (19.81m)

**Beam:** 16' 1" (4.90m)

**Min Draft:** 10' 2" (3.10m)

Our experienced yacht broker, Andrey Shestakov, will help you choose and buy a yacht that best suits your needs **LOLA K — VR Yachts** from our catalogue. Presently, at Shestakov Yacht Sales Inc., we have a wide variety of yachts available on our sale's list. We also work in close contact with all the big yacht manufacturers from all over the world.

If you would like to buy a yacht **LOLA K — VR Yachts** or would like help answering any questions concerning purchasing, selling or chartering a yacht, please call **+1(954)274-4435**

---

# TABLE OF CONTENTS

---

TABLE OF CONTENTS	2
SPECIFICATIONS	3
Overview	3
Basic Information	3
Dimensions	3
Speed, Capacities and Weight	3
Accommodations	3
Hull and Deck Information	3
Engine Information	4
DETAILED INFORMATION	5
SPECIFICATION	5
Exclusions	11
Disclaimer	12
PHOTOS	13
CONTACTS	20
Contact details	20
Telephones	20
Office hours	20
Address	20

---

# SPECIFICATIONS

---

## Overview

---

Performance Cruiser From Andrea Vallicelli and VR Yachts sporting a good med Spec.

## Basic Information

---

**Category:** Cruising Sailboat

**Model Year:** 2003

**Year Built:** 2003

**Country:** Italy

## Dimensions

---

**LOA:** 65' 0" (19.81m)

**Beam:** 16' 1" (4.90m)

**Min Draft:** 10' 2" (3.10m)

## Speed, Capacities and Weight

---

**Displacement:** 46297.07502 Pounds

**Water Capacity:** 211.3376416 Gallons

**Holding Tank:** 34.870710864 Gallons

**Fuel Capacity:** 211.3376416 Gallons

## Accommodations

---

**Total Cabins:** 4

**Total Berths:** 8

**Total Heads:** 3

## Hull and Deck Information

---

**Hull Material:** GRP

**Deck Material:** GRP

**Hull Designer:** Andrea Vallicelli

---

## Engine Information

---

**Engines:** 1

**Manufacturer:** Volvo Penta

**Model:** TAMD 31S

**Engine Type:** Inboard

**Fuel Type:** Diesel

---

# DETAILED INFORMATION

---

## SPECIFICATION

---

### Construction:

*RCD Status: The yacht conforms with the essential safety requirements of Directive 94/25EC (Recreational Craft Directive) and is categorised A – “Ocean”*

### *Hull, Deck & Superstructure Construction:*

- Hull is constructed in GRP sandwich with glass/vinylester laminate over airex foam core.
- Kevlar is used to reinforce the outer skin against impact.
- White hull.
- Airex/GRP sandwich deck with micro balloon non-slip finish in white.
- Cockpit sole and seating in teak.

### *Keel & Rudder:*

- Fin/bulb keel.
- Hi-tensile stainless keel strut with cast lead bulb.

### Machinery:

#### *Engine & Gearboxes:*

- 1 x Volvo Penta TAMD 31S 105hp diesel engine with hydraulic gearbox.

#### *Maintenance & Performance:*

- Engine Hours: 1,900 hours as of 20/11/2011.

#### *Propulsion & Steering:*

- Cable/quadrant controlled by 1.4m diameter stainless steel wheel covered in white elkhide.
- Hydraulic autopilot with ram connected directly to quadrant.
- Steering system by Solimar, Italy.

- Gori propeller.

## **Electrical Systems:**

### *Voltage Systems:*

- 12v DC system for general service and consumption.
- 230v AC system.
- 12 and 220v outlets in Forward Cabin (Owner's).

### *Battery Banks:*

- 12v 770Ah for general service batteries.
- 12v 300Ah for engine starting.
- 12v 100Ah for generator starting.

### *Battery Chargers:*

- 100 Amp battery charger for service batteries.
- 50 Amp battery charger for engine batteries.

### *Alternators:*

- 150 Amp service alternator on main engine.
- 50 Amp starting battery alternator on main engine.

### *Generator:*

- Mase 4kw generator.

### *Shore Power:*

- 50 Amp shore power system.

## **Plumbing Systems:**

### *Fresh Water & Water Heating System:*

- Variable speed fresh water pump system.

- Manual freshwater pumps as back up.
- Z-Brane water sterilizer.

*Watermaker:*

- 12v Spectra Newport 400 watermaker.

**Tankage:**

*Fuel:*

- Total capacity of 800 litres.

*Fresh water:*

- Total capacity of 800 litres.

*Grey/Blackwater holding tanks:*

- Total black water capacity of 500 litres with macerator pump and deck pump out.

**Navigation/Communications Equipment:**

- Raymarine Navi instruments for wind, depth and heading.
- Raymarine GPS/plotter and radar with MARPA RL70C at nav station.
- Raymarine autopilot with hydraulic drive and internal gyro compass.
- Leica 420 GPS navigation system.
- Icom VHF with DSC controller DS-100.
- Furuno Weatherfax (Fax-07).
- Simrad VHF handheld TC 50.

**Domestic Equipment:**

*Galley:*

- Twin stainless steel sinks with spray taps.
- Force Ten 4-burner gas stove.
- Top loading freezer.

- Front loading refrigerator.

#### *Heads/Showers:*

- 1 x Electric W/C.
- 2 x W/C
- 3 x Showers with automatic grey water pump.

#### *Heating & Ventilation:*

- Twin air extractors to remove hot air from cabins.
- Natural ventilation through hatches and portholes.

#### *Entertainment:*

- CD player and AM/FM radio with speakers in saloon and cockpit.

#### **Accommodation:**

##### Summary of Accommodation:

- Interior finished in European oak.
- Saloon upholstery in beige alcantara.
- Teak and holly sole board.

#### *Description of layout from forwards:*

##### *Forward Cabin (Crew):*

- Two pipe cots with rails for attaching ropes, fenders etc.

##### *Forward Cabin (Owner's):*

- Centerline large double berth with V-spring interior mattress.

##### *Ensuite Heads Compartment:*

- Electric head.
- Wash basin.
- Mirror.



- Storage lockers.
- Separate shower box.

*Port Side Aft Cabin:*

- 2 x Separate berths.
- Abundant stowage and hanging lockers.

*Ensuite Heads Compartment:*

- W/C.
- Shower.

*Starboard Side Aft Cabin:*

- 2 x Separate berths.
- Abundant stowage and hanging lockers.

*Ensuite Heads Compartment:*

- W/C.
- Shower.

*Saloon:*

- U-shaped settee to starboard surrounding fixed table with seating for eight or more.
- Bookshelves and storage lockers outboard on both sides.
- Drinks locker to stow bottles and wide selection of wine and spirit glasses.
- Settee on port side, long enough to be used as a berth.

*Galley (Starboard):*

- Work surfaces in Corian.

*Navigation Station (Port):*

- Full sized chart table with stowage for charts.
- Drawers for stowage.

- Under seat locker.
- Oilskin hanging locker aft of navigation seat.

#### *Engine Room:*

- Access via removable panels and lifting companionway steps.
- Compartment is well lighted and grants good access to machinery.

### **Deck Equipment:**

#### *Rig:*

- Three spreader Velscaf aluminium mast with discontinuous rod rigging and conventional boom.
- Reckman genoa furler.
- Fredricksen deck hardware; luff cars, oversized for full batten mainsail.
- Carbon spinnaker pole.
- Navtec manual hydraulics operating backstay and vang.
- Stainless steel control panel for hydraulics in cockpit.
- Spectra halyards for main, genoa and code zero.
- Polyester halyard for spinnaker.
- Spinlock clutches and jammers.

#### *Winches:*

- 2 x Primary 66.2 self-tailing electric winches.
- 2 x Secondary 53.2 self-tailing electric winches.
- 2 x Halyard 46.2 self-tailing electric winches.

#### *Sails:*

---

Spectra Mainsail      2010 Elvstrom Full batten, Fredricksen luff track hardware

105% Furling Headsail 2008 Doyle      Spectra

105% Furling Headsail 2003 Ullman      Mylar/Kevlar

Code Zero      2003 Ullman      Kevlar, manual furler

Spinnaker      2003 Ullman      All ropes, pole and hardware included.

### *General:*

- 2.5m Passarelle in aluminium.
- 2.3m Passarelle in carbon fibre.
- Side boarding ladder in carbon fibre.

### *Anchoring & Mooring Equipment:*

- 55lb Spade anchor with 100m of 10mm calibrated anchor chain.
- 1500 watt electric windlass with controls at bow and helm station.
- Electronic chain counter.
- Spare spade anchor with 15m chain and nylon Rhode.

### *Safety Equipment:*

- 8-person Arimar liferaft.
- Yellow horseshoe life ring with light.
- 8 x Inflatable life jackets.
- McMurdo EPIRB.

## **Exclusions**

---

Owner's personal belongings.

---

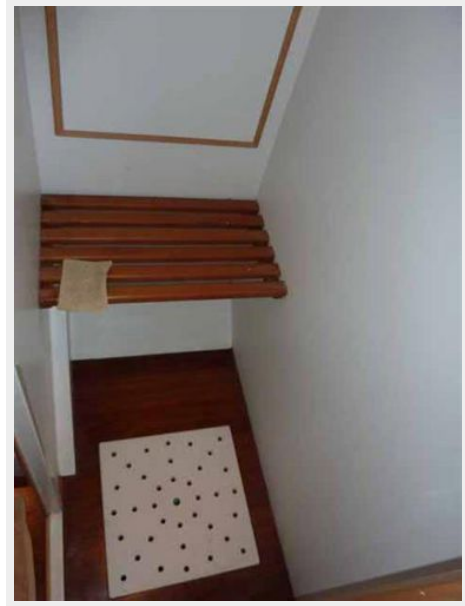
## Disclaimer

---

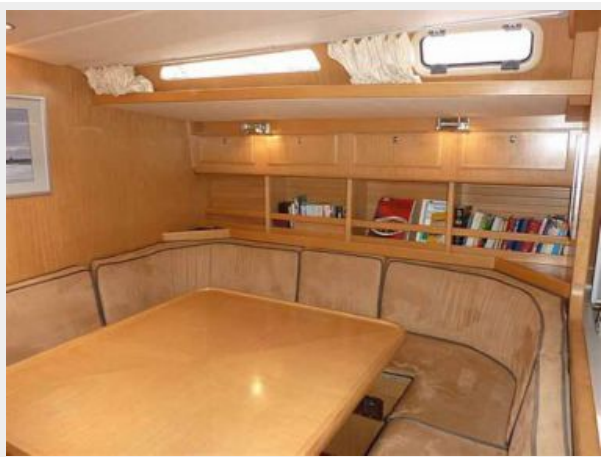
The Company offers the details of this vessel or yacht in good faith but cannot guarantee or warrant the accuracy of this information nor warrant the condition of the vessel. A buyer should instruct his representatives, agents, or his surveyors, to investigate such details as the buyer desires validated. This vessel or yacht is offered subject to prior sale, price change, or withdrawal without notice.

# PHOTOS







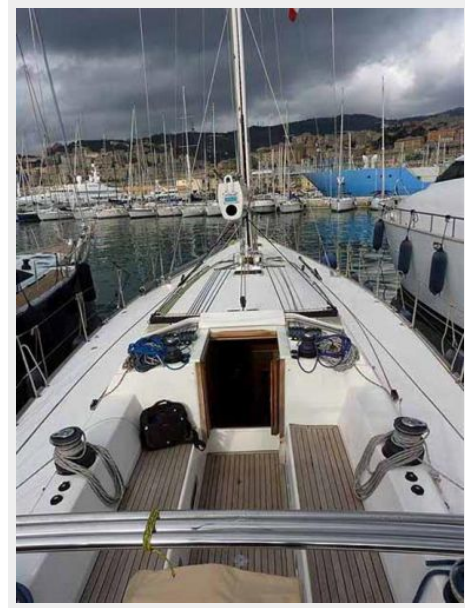
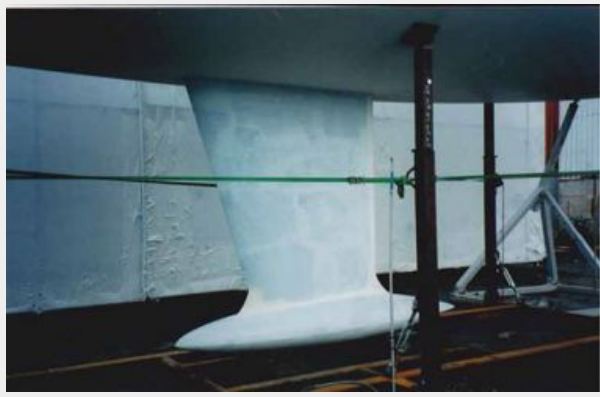












# CONTACTS

---

Andrey Shestakov, leading yacht broker of the sales department of Shestakov Yacht Sales Inc. Shestakov Yacht Sales Inc., the official representative of the Miami/Fort Lauderdale FL headquarters.

## Contact details

---

Email: [andrey@shestakovyachtsales.com](mailto:andrey@shestakovyachtsales.com)

Web: [shestakovyachtsales.com/en/](http://shestakovyachtsales.com/en/)

## Telephones

---

USA: +1(954)274-4435

## Office hours

---

Monday – Saturday: **9:00 - 21:00** EDT

Sunday: **closed**

## Address

---



Harbour Towne Marina, 850 NE 3rd St,  
STE 213, Dania, FL 33004