

## MID SUMMER'S DREAM — HINCKLEY



**Судостроитель:** HINCKLEY

**Год постройки:** 2004

**Модель:** Моторная яхта

**Цена:** **ЦЕНА ЯХТЫ ПО ЗАПРОСУ**

**Местонахождение:** United States

**Длина общая:** 55' 3" (16.84m)

**Ширина:** 17' 9" (5.41m)

**Мин. осадка:** 2' 11" (0.89m)

**Макс. осадка:** 2' 11" (0.89m)

**Крейс. скорость:** 32 Kts. (37 MPH)

**Макс. скорость:** 39 Kts. (45 MPH)

Купить **MID SUMMER'S DREAM — HINCKLEY** а также выбрать подходящую вам яхту из нашего каталога яхт вам поможет опытный яхтенный брокер Андрей Шестаков. На сегодняшний день компания **Shestakov Yacht Sales Inc.** имеет большое количество яхт в собственном списке продаж, а также тесно сотрудничает со всеми крупными яхтенными производителями по всему миру.

Для того чтобы купить яхту **MID SUMMER'S DREAM — HINCKLEY** а также проконсультироваться по любому вопросу связанному с покупкой, продажей, чартером яхт позвоните по телефону **+7(918)465-66-44**.

# ОГЛАВЛЕНИЕ

ОГЛАВЛЕНИЕ	2
ХАРАКТЕРИСТИКИ	4
Обзор	4
Основная информация	4
Размеры	4
Скорость, вместимость и масса	4
Размещение	5
Корпус и палуба	5
Информация о двигателе	5
ПОДРОБНОЕ ОПИСАНИЕ	6
VESSEL OVERVIEW:	6
MASTER STATEROOM:	6
MASTER HEAD:	7
GUEST STATEROOM:	7
GUEST / DAY HEAD:	7
SALON:	8
GALLEY	8
DECK AND HULL:	9
ENGINE AND MECHANICAL DETAILS:	10
ELECTRICAL:	11
ELECTRONICS AND NAVIGATION	11
COMMENTS:	12
Исключения	12
Отказ от ответственности	12
ФОТОГРАФИИ	13
Salon Starboard Side Forward	13
Salon Port Side Forward	13
Salon Forward	13

---

Galley	13
Master Stateroom	14
Galley 2	14
Master Stateroom 2	14
Master Stateroom 3	14
Master Head	15
Master Stateroom 4	15
Guest Cabin	15
Guest Head	15
Full Size Washer / Dryer	16
Stidd Helm Chairs	16
Electrical Panel	16
Cockpit Showing Folding Seat	16
Cockpit Looking Forward	17
Lazzarette	17
Running Shot	17
Layout	17
Running Shot 2	17
<b>КОНТАКТЫ</b>	<b>18</b>
Контактная информация	18
Телефоны	18
Время работы	18
Адрес	18

# ХАРАКТЕРИСТИКИ

## Обзор

MID SUMMER'S DREAM is a stunning and fast example of this well admired Bruce King design and is being offered on the brokerage market for the first time. Providing spacious accommodations for up to six adults in two private staterooms and a convertible settee in the salon, she is ideal for use as a couple's getaway or for family cruising. Beautifully appointed with satin finished cherry, high gloss teak and holly sole, top quality fabrics and reliable machinery ensure her next owner a continued level of style, comfort, and performance relatively few ever have the opportunity to experience. Very well recommended by her broker, this is one Hinckley 55 not to miss.

## Основная информация

<b>Тип судна:</b> Моторная яхта	<b>Подкатегория:</b> Jet Boat
<b>Модельный год:</b> 2004	<b>Год постройки:</b> 2004
<b>Страна:</b> United States	<b>Кубрик:</b> Да

## Размеры

<b>Длина общая:</b> 55' 3" (16.84m)	<b>Ширина:</b> 17' 9" (5.41m)
<b>Мин. осадка:</b> 2' 11" (0.89m)	<b>Макс. осадка:</b> 2' 11" (0.89m)

## Скорость, вместимость и масса

<b>Крейс. скорость:</b> 32 Kts. (37 MPH)	<b>Макс. скорость:</b> 39 Kts. (45 MPH)
<b>Водоизмещение:</b> 59999 Pounds	<b>Вместимость воды:</b> 200 Gallons
<b>Вместимость сточного бака:</b> 26 Gallons	<b>Объем топливного бака:</b> 1000 Gallons

## Размещение

---

Всего кают: 2

Спальные места: 6

Всего ком. состава: 2

## Корпус и палуба

---

Материал корпуса: Kevlar Composite

Материал палубы: Teak

Дизайнер корпуса: Bruce King

## Информация о двигателе

---

Двигатели: 2

Производитель: MAN

Тип двигателя: Inboard

Тип топлива: Diesel

---

# ПОДРОБНОЕ ОПИСАНИЕ

---

## VESSEL OVERVIEW:

---

MID SUMMER'S DREAM is a stunning and fast example of this well admired Bruce King design which is being offered on the brokerage market for the first time. Providing spacious accommodations for up to six adults in two private staterooms and a convertible settee in the salon, she is ideal for use as a couple's getaway or for family cruising. Beautifully appointed with satin finished cherry, high gloss teak and holly sole, top quality fabrics and reliable machinery ensure her next owner a continued level of style, comfort, and performance relatively few ever have the opportunity to experience. Very well recommended by her broker, this is one Hinckley 55 not to miss.

## MASTER STATEROOM:

---

Centerline tapered Queen berth

Satin Cherry wood finish

High gloss Teak and Holly sole

Large overhead hatch w/retractable screen and blackout shade

(4) Opening ports w/screens and blackout shades

Sharp Aquos flat screen TV

Samsung DVD/VHF player

Bose speaker system

Air-conditioning control

Variable overhead lighting

Bedside reading lamps

2-ceeder lined hanging lockers

Small built in desk w/stool

---

## MASTER HEAD:

---

High gloss Teak and Holly sole

Stainless washbasin

Teal Corian countertop

Tankwatch 4 holding tank monitor

SeaLand vacuflush toilet

Overhead hatch w/retractable screen and blackout shade

Opening port w/screen and blackout shade

Large stall shower

---

## GUEST STATEROOM:

---

Two athwart ship single berths

Satin Cherry wood finish

High gloss Teak and Holly sole

Hanging locker

(2) Opening ports w/screens and blackout shades

Overhead opening hatch w/retractable screen and blackout shade

(2) Fans

Air-conditioning control

Bose speakers

Bedside reading lamps

Variable overhead lighting

---

## GUEST / DAY HEAD:

---

High gloss Teak and Holly sole

Stainless washbasin

Teal Corian countertop

Tankwatch 4 holding tank monitor

SeaLand vacuflush toilet

Overhead hatch w/retractable screen and blackout shade

Opening port w/screen and blackout shade

Stall shower

---

## **SALON:**

---

Satin Cherry wood finish

High gloss Teak and Holly sole

U-shaped dinette / settee to starboard

Satin cherry electric high/low pedestal table that converts to a double bunk

Bose surround sound system

Custom Cherry cabinet to port with foldaway Sharp Aquos flat panel TV and DVD/CD player

(4) Overhead opening hatches w/retractable screens and blackout shades

(2) Wall mounted lamps on aft bulkhead

Floor to ceiling blackout drapes for aft windows/French doors

Variable overhead lighting

---

## **GALLEY**

---

High gloss Teak and Holly sole

Large stainless sink w/detachable wand shower spigot



Teal Corian countertop

Custom dish drying rack

Princess 2-burner stove

Sharp carousel stainless convection microwave

Cuisinart stainless toaster

Sub-Zero 700BR refrigerator and freezer drawers

Icemaker located under Stidd helm seats

---

## DECK AND HULL:

---

Burgundy Red Awlgrip over a Kevlar/E-glass and Carbon fiber SCRIMP hull

White Gel coat deck

White boot stripe

Black bottom

Full stainless bow rail and varnished teak toe rail and cockpit coamings

Wide side decks with integral fender lockers

USCG navigation lights

Saltwater deck wash spigot on bow

Hydraulic Muir windlass in recessed custom anchor well

Polished stainless DELTA plow anchor w/chain rode

Spare aluminum Fortress anchor

17gal hot water heater

100gal aluminum holding tank

200gal stainless fresh water tank

Hot and cold cockpit shower

Swim platform with ladder

Molded fiberglass rear facing bench seats to port and starboard in cockpit

Storage lockers to port and starboard in cockpit

Assorted fenders and lines

Assorted life jackets

St. Croix tender davits on swim platform

Sunscreens for salon and pilothouse windows

Stainless frame four panel sliding French doors from salon to cockpit

(4) Kidde multipurpose dry chemical extinguishers

Fold away aft cockpit bench seat

Aft cockpit lighting

Lifesling

## **ENGINE AND MECHANICAL DETAILS:**

---

(2) MAN 1300hp diesel engines with Twin Disc transmission (1022hrs 7/2014)

(2) Hamilton 403 jet drives

Dual Racor fuel filters for each engine

Reverse oil change system

Automatic Haylon fire extinguishing system

Underwater exhaust system with low speed by pass

Side Power hydraulic bow thruster

Dual cylinder stainless trim tabs

Power assisted steering

Forced air exhaust blower in engine room

17gal Stainless hot water heater

Central vacuum system

Marine Air Systems air conditioning with reverse cycle heating

## **ELECTRICAL:**

---

Westerbeke 15kw generator in sound box (694hrs 7/2014)

(2) Balmar 100amp alternators

(2) 24 volt DC Mastervolt battery chargers/inverters

(4) House batteries

(4) Engine and generator starting batteries(New 7/2014)

24 volt DC ships service

12 volt lighting throughout

240/120 volt AC system

50amp shore power cord with Glendenning system

ProMariner galvanic isolator monitor

## **ELECTRONICS AND NAVIGATION**

---

Garmin GPSmap 5215

Garmin GPSmap 4212

Raymarine ST2 90 display

Raymarine ST2 90 autopilot

Raymarine ST2 90 bucket/rudder angle indicator

Icom IC-M602 VHF/Hailer

MAN engine control panel (Upgraded 7/2014)

MAN electronic throttle controls (Replaced with new upgrade version 7/2014)

Hinckley JetStick control

Exalto wiper control pad

Ritchie Powerdamp compass

ACR spotlight control

Matrix tank monitor system

(2) Stidd electric helm chairs

Electric side helm window

Westerbeke remote starting panel for generator

Fuel flow meter

High water bilge alarm

---

## COMMENTS:

This is a well-maintained and aggressively priced yacht in good order with no surprises. Offers are encouraged by her motivated owner.

---

## Исключения

При продаже яхты исключаются личные вещи владельца.

---

## Отказ от ответственности

Компания предоставляет описание судна или яхты добросовестно, но не может гарантировать точность этой информации, а также не ручается за техническое состояние. Покупатель должен проинструктировать своих агентов или оценщиков исследовать представленную информацию более подробно, по собственному желанию. Продажа судна или яхты, изменение цены или снятие с продажи будет происходить без предварительного уведомления.

# ФОТОГРАФИИ

**Salon Starboard Side Forward**



**Salon Port Side Forward**



**Salon Forward**



**Galley**



**Galley 2**



**Master Stateroom**



**Master Stateroom 2**



**Master Stateroom 3**



**Master Stateroom 4**



**Master Head**



**Guest Cabin**



**Guest Head**





### Full Size Washer / Dryer



### Stidd Helm Chairs



### Electrical Panel



### Cockpit Showing Folding Seat





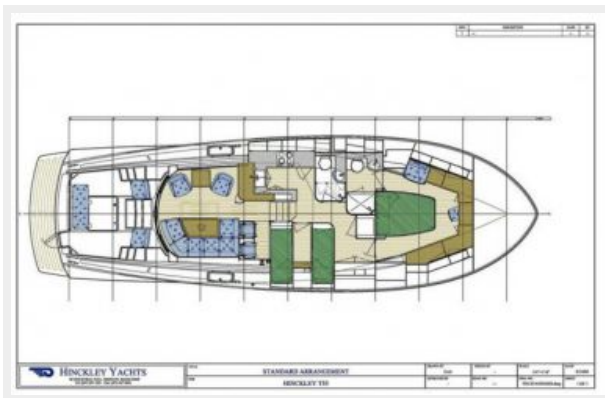
Cockpit Looking Forward



Lazzarette



Layout



Running Shot



Running Shot 2



# КОНТАКТЫ

---

Андрей Шестаков (Andrey Shestakov) – ведущий яхтенный брокер отдела продаж яхт и судов компании Shestakov Yacht Sales Inc. Официальный представитель Shestakov Yacht Sales Inc. для русскоговорящих клиентов в центральном офисе компании в Майами/Форт Лодердейл/Флорида/США.

## Контактная информация

---

Email: [andrey@shestakovyachtsales.com](mailto:andrey@shestakovyachtsales.com)

Web: [shestakovyachtsales.com](http://shestakovyachtsales.com)

## Телефоны

---

Краснодарский край: **+7(918)465-66-44**

США, Майами, Флорида: **+1(954)274-4435**

## Время работы

---

Понедельник – Суббота: **9:00 - 21:00**  
EDT

Воскресенье: **Закрито**

## Адрес

---



Harbour Towne Marina, 850 NE 3rd St,  
STE 213, Dania, FL 33004