

MISS STEPHANIE — HATTERAS



Builder: HATTERAS

Year Built: 1990

Model: Motor Yacht

Price: PRICE ON APPLICATION

Location: United States

LOA: 70' 0" (21.34m)

Beam: 18' 2" (5.54m)

Min Draft: 5' 6" (1.68m)

Max Draft: 5' 11" (1.80m)

Cruise Speed: 18 Kts. (21 MPH)

Max Speed: 20 Kts. (23 MPH)

Our experienced yacht broker, Andrey Shestakov, will help you choose and buy a yacht that best suits your needs **MISS STEPHANIE — HATTERAS** from our catalogue. Presently, at Shestakov Yacht Sales Inc., we have a wide variety of yachts available on our sale's list. We also work in close contact with all the big yacht manufacturers from all over the world.

If you would like to buy a yacht **MISS STEPHANIE — HATTERAS** or would like help answering any questions concerning purchasing, selling or chartering a yacht, please call **+1(954)274-4435**

TABLE OF CONTENTS

TABLE OF CONTENTS	2
SPECIFICATIONS	4
Basic Information	4
Dimensions	4
Speed, Capacities and Weight	4
Accommodations	4
Hull and Deck Information	4
Engine Information	5
DETAILED INFORMATION	6
Accommodations	6
Vessel Walkthrough	6
Main Salon - Aft	6
Galley - Port	7
Master Stateroom	7
VIP Stateroom - Port	8
Guest Stateroom - Port	8
Crew Quarters/Guest Stateroom	8
Laundry	8
Pilothouse	8
Deck	9
Aft Deck	9
Flybridge	9
Flybridge Electronics	10
Electrical System	10
Engine Room	10
Recent Upgrades Since 2008	11
Exclusions	12
Exclusions	12

Disclaimer	12
PHOTOS	13
Upper Helm	17
Bow Sunpads	17
CONTACTS	20
Contact details	20
Telephones	20
Office hours	20
Address	20

SPECIFICATIONS

Basic Information

Category: Motor Yacht

Sub Category: Pilothouse

Model Year: 1990

Year Built: 1990

Country: United States

Fly Bridge: Yes

Cockpit: Yes

Dimensions

LOA: 70' 0" (21.34m)

Beam: 18' 2" (5.54m)

Min Draft: 5' 6" (1.68m)

Max Draft: 5' 11" (1.80m)

Speed, Capacities and Weight

Cruise Speed: 18 Kts. (21 MPH)

Max Speed: 20 Kts. (23 MPH)

Displacement: 103000 Pounds

Water Capacity: 345 Gallons

Fuel Capacity: 1596 Gallons

Accommodations

Total Cabins: 4

Sleeps: 8

Total Heads: 4

Hull and Deck Information

Hull Material: Fiberglass

Deck Material: Fiberglass

Hull Configuration: Semi Vee

Hull Designer: Hargrave

Engine Information

Engines: 2

Manufacturer: Detroit Diesel

Model: 12V92TA

Engine Type: Inboard

DETAILED INFORMATION

Accommodations

Sleeps 8 in 4 staterooms.

Vessel Walkthrough

Entering the pilothouse from the side deck is a custom leather helm seat with arm rest, extensive electronics and custom flooring. Aft is the galley with full size appliances, European style cabinets, custom flooring and dinette table with seating for four. The salon is aft with a custom bar on the forward bulkhead with a Corian countertop. An L-shaped leather sofa is to port with a custom end table and matching coffee table. Across from the sofa is a 32" flatscreen (2012) / stereo system nestled between two barrel chairs.

From the salon, down a few stairs, is a private entrance to the master stateroom with a king berth and large head with a tub/shower and Jacuzzi. Down from the pilothouse is the VIP stateroom, which is portside, with a queen-size berth and private head. The guest stateroom is forward of the VIP with two single berths and locker storage. Forward is the crew stateroom with an upper and lower berths and a private head.

Entire boat painted 2014.

All new:

- Outside cushions flybridge aft deck
- Covers, windshield 2, one white, one black
- Window tinting
- Port holes in master stateroom & VIP stateroom

Main Salon - Aft

A custom bar with a Corian countertop is featured on the bulkhead just forward of the custom dining table. The L-shaped sofa is aft to port with the entertainment center and two barrel chairs to starboard.

- L-shaped sofa
- Sony DSS receiver
- Flat screen 32"

- Custom coffee table, (2) barrel chairs
- Sony surround sound receiver Channel modulator
- Custom window treatments
- Speaker selector box
- Custom bar
- Sony DVD/CD
- Sony DVD player
- Stereo receiver
- Central Vac
- New interior in 2003 and 2005 and 2011
- Scotman icemaker
- Refrigerator

Galley - Port

The galley is portside with the dinette to starboard. The galley has full size appliances, custom flooring and European-style cabinets.

- New fabric in galley 2012
- New appliances 2011
- GE built-in stainless steel microwave
- Whirlpool built-in stainless steel range
- Whirlpool built-in stainless steel oven
- Fisher-Paykel built-in stainless steel refrigerator
- Custom Corian countertop and extra large Corian custom sink garbage disposal 2010
- Whirlpool built-in stainless steel dishwasher
- Ceramic tile flooring
- Corian dinette table
- U-Line wine cooler 2006

Master Stateroom

Down private stairs from the salon is the spacious master suite with king berth, walk-in cedar closet, storage space, lacquered cabinets and a large head with tub/shower and Jacuzzi. Heads are upgraded to Euro-style elongated; custom cabinet behind head for additional storage. The master stateroom is also equipped with custom fabrics, wall coverings, mirror work and a 26' flat screen (2012). Upgraded portholes to a larger size to brighten interior and for use as an escape hatch.

VIP Stateroom - Port

Down from the pilothouse to the VIP stateroom is a queen berth, built-in TV, custom wall coverings and fabrics, mirror work and private head with shower.

Guest Stateroom - Port

The guest stateroom features two side by side single berths with locker storage and custom fabrics. Shared head located at bottom of stairs which would be a dayhead. With TV.

Crew Quarters/Guest Stateroom

Located forward with upper and lower berths, TV, locker storage, private head with shower.

Laundry

The stacked washer and dryer are built in the hallway landing to the VIP stateroom.

Pilothouse

- New fabric in pilothouse including helm and helm seat 2012
- Simrad 96 mi radar
- Camera monitoring system aft deck and engine room - new 2008
- Garmin HD 48-mile radar 2012
- B & G wind, speed, directional indicator 2008
- SEA SSB radio (does not work)
- B & G speed/depth sounder 2002
- Icom VHF 2
- Garmin 5212 GPS Plotter w/ depth, weather and radar
- SEA VHF Raytheon hailer
- KVH Sat System
- Robertson AP 35 - new 2005
- Systems monitor
- Naiad stabilizer controls
- Trim tab controls
- New flatscreen 2012 for cameras and SAT TV and cable

Deck

- Danforth anchor
- Bow pulpit w/ rails
- Hatteras anchor chute
- Galley Main electrical windlass
- Marquipt low profile davit - rebuilt 2009
- Windshield washers and wipers
- Vertical boarding ladder
- (2) Dunnage boxes
- Navigation lights
- Side stanchions w/ lifelines
- Arch and toe lights on flybridge
- Swim platform and ladder
- Halogen lights on observation deck and flybridge
- Bimini top attached to arch
- (2) Station electric controlled search lights
- Transom door
- Storage boxes forward port and starboard

Aft Deck

Custom extended aft deck with large L-shaped seating and a Corian table. Extending the aft deck created a nice space underneath which accommodates a large cooking grill to port and fender storage to starboard.

Flybridge

- (2) Helm chairs
- Toe and arch lights
- (2) Cocktail tables
- Stereo speakers
- Halogen lights
- Jenn-Air grill
- B & G speed/depth 2002
- 5212 Garmin GPS plotter w/ depth, weather and radar
- Custom bar w/ refrigerator and U-line icemaker 2010
- VHF radio 2006
- (3) Bar stools
- Simrad Roberston auto pilot 2005
- Custom Stairway in 2006 (not a ladder) from Pilothouse w/ storage to flybridge with custom wine cooler

- Bimini top

Flybridge Electronics

- Northstar 952X 2002
- Robertson AP 35 2005
- Icom VHF 2002
- B & G Hydra 2000-2002
- Spotlight controls (spotlight not installed but goes with boat)
- Naiad stabilizer controls
- Rudder angle indicator
- Garmin 5212 (2012)
- Ritchie compass

Electrical System

- 110 volt 220 volt A/C electrical system
- (4) Batteries
- 12 volt 24 volt DC electrical system
- Dockside electrical cable
- (2) Onan 20 kW generators w/ around 1350 hrs each
- Transformer and fuse protected shore power systems
- Automatic battery charger
- Glendinning cablemaster shore power cord retrieval and storage
- (6) Batteries w/ parallel switch system

Engine Room

- Twin x 1040/hp Diesels IB: Hours 730 SMOH in 2000
- Twin 1989 Detroit Diesel 12V92TA
- (3) Bilge blowers
- Twin 1989 Detroit Diesel 12V92TA - 1040hp IB diesel fuel filters
- Cruisair SMX reverse cycle air conditioning system
- Water separating fuel filters on mains and generators
- Cockpit, bridge, cabin engine controls
- Engine fuel shut-off valve
- Fresh water cooling system
- Bar graph fuel gauge system
- Lube oil transfer system
- (5) Automatic bilge pumps
- Raw water sea strainer

- UL approved fiberglass Hatteras fuel tanks
- Naiad stabilizers (new hi-pressure line 2012, fins dropped and serviced 2012)
- CO2, automatic, manual fire extinguishers
- Hynautic manual, hydraulic wheel steering - all new fluids and seal - Fall 2011
- Acoustical thermal insulation
- Engine synchronizers
- Electric fuel prime pumps
- Electric holding tank head
- Oil change system
- Trim tabs
- Glendinning synchronizers
- Engine temperature alarm
- Engine room manual gauges for water and oil pressure
- Vacuum gauges for fuel filters

Recent Upgrades Since 2008

- Entire paint job 2014
- Both generators were totally rebuilt on both ends by Marine Maintenance of Panama City, Fla. and Broward Armature of Ft. Lauderdale, Fla. The port generator has 15099 hours, while the starboard has 16174 hours, according to the hour meters, but only **about 1025 hours since the major rebuilds.**
- Upgraded the flybridge electronics and rebuilt the entire flybridge dash, installing two Furuno Navnet vxll 10" screens with GPS, color sounder, radar, satellite weather and video feed for security cameras in engine room or aft deck. Also installed new Icom-M604 with hailer and emergency manual backups on main engine controls.
- Replaced the exterior canvas.
- The security system was replaced with Pelco 360 degree cameras with zoom and a command unit with room for expansion.
- Exchanged the small freezer in the galley for a wine cooler
- Upgraded the aft deck TV to a 30" flat screen.
- Added satellite receivers to allow varied viewing throughout vessel
- Installed six (6) new Sea Vision SV-14 underwater lights around transom
- Replaced flybridge constellation compass
- New Kobalt stainless tool chest in engine room
- Installed new oil change pump and manifold
- Replaced aft deck refrigerator
- Renovated and brightened up crew quarters dramatically
- New air conditioning compressors 08/10
- New seawater and chilled water pumps 08/10
- New shaft seals and bearings on both Naiad stabilizers 03/13
- New driplless shaft seals 03/13
- Installed new bowthruster 03/13

- New cutlass bearings and rudder seals 03/13
- Reconditioned props and shafts 03/13
- Complete blister job with new bottom paint 03/13
- All new airsepts air filters 03/13
- Flushed heat exchangers 03/13
- All new injectors on starboard engine 03/13
- Rebuilt blowers on starboard engine 03/13
- Complete paint job and bottom paint 04/14

Exclusions

- Owner's personal belongings
- Inflatable Tender

Exclusions

Owner's personal belongings.

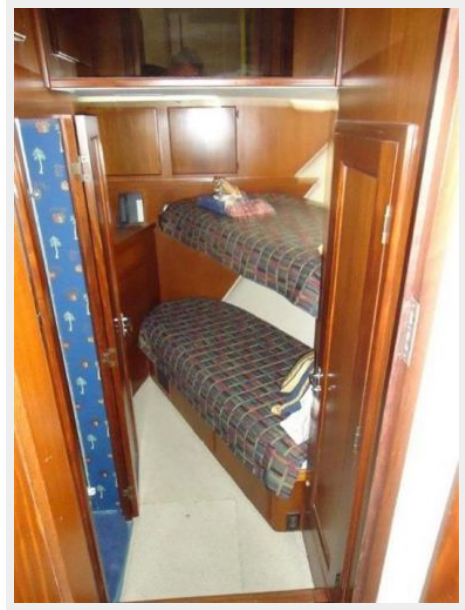
Disclaimer

The Company offers the details of this vessel or yacht in good faith but cannot guarantee or warrant the accuracy of this information nor warrant the condition of the vessel. A buyer should instruct his representatives, agents, or his surveyors, to investigate such details as the buyer desires validated. This vessel or yacht is offered subject to prior sale, price change, or withdrawal without notice.

PHOTOS











Upper Helm



Bow Sunpads







CONTACTS

Andrey Shestakov, leading yacht broker of the sales department of Shestakov Yacht Sales Inc. Shestakov Yacht Sales Inc., the official representative of the Miami/Fort Lauderdale FL headquarters.

Contact details

Email: andrey@shestakovyachtsales.com

Web: shestakovyachtsales.com/en/

Telephones

USA: +1(954)274-4435

Office hours

Monday – Saturday: **9:00 - 21:00** EDT

Sunday: **closed**

Address



Harbour Towne Marina, 850 NE 3rd St,
STE 213, Dania, FL 33004