

# CUSTOM POWER CATAMARAN — CUSTOM



**Builder:** CUSTOM

**Year Built:** 2000

**Model:** Catamaran

**Price:** PRICE ON APPLICATION

**Location:** Singapore

**LOA:** 118' 2" (36.00m)

**Beam:** 39' 5" (12.00m)

**Min Draft:** 5' 2" (1.55m)

**Cruise Speed:** 18 Kts. (21 MPH)

**Max Speed:** 21 Kts. (24 MPH)

Our experienced yacht broker, Andrey Shestakov, will help you choose and buy a yacht that best suits your needs **Custom Power Catamaran — CUSTOM** from our catalogue. Presently, at Shestakov Yacht Sales Inc., we have a wide variety of yachts available on our sale's list. We also work in close contact with all the big yacht manufacturers from all over the world.

If you would like to buy a yacht **Custom Power Catamaran — CUSTOM** or would like help answering any questions concerning purchasing, selling or chartering a yacht, please call **+1(954)274-4435**

---

# TABLE OF CONTENTS

---

|  |    |
|--|----|
| TABLE OF CONTENTS                      | 2  |
| SPECIFICATIONS                         | 3  |
| Overview                               | 3  |
| Basic Information                      | 3  |
| Dimensions                             | 3  |
| Speed, Capacities and Weight           | 3  |
| Accommodations                         | 4  |
| Hull and Deck Information              | 4  |
| Engine Information                     | 4  |
| DETAILED INFORMATION                   | 5  |
| Accommodations                         | 5  |
| Electrical System                      | 5  |
| Electronics and Navigational Equipment | 5  |
| Galley                                 | 5  |
| Engine /Mechanical Equipment           | 6  |
| Water Sports                           | 6  |
| Exclusions                             | 6  |
| Disclaimer                             | 6  |
| PHOTOS                                 | 8  |
| CONTACTS                               | 10 |
| Contact details                        | 10 |
| Telephones                             | 10 |
| Office hours                           | 10 |
| Address                                | 10 |

---

# SPECIFICATIONS

---

## Overview

---

A fast and very stable power catamaran with huge entertaining spaces and guest accommodation. Lightweight in aluminium the yacht has teak decks throughout. The yacht completed a refit in 2011 to bring up up to a very high standard and is fully operational throughout.

## Basic Information

---

|                             |                           |
|-----------------------------|---------------------------|
| <b>Category:</b> Catamaran  | <b>Model Year:</b> 2000   |
| <b>Year Built:</b> 2000     | <b>Refit Year:</b> 2011   |
| <b>Refit Type:</b> Interior | <b>Country:</b> Singapore |
| <b>Fly Bridge:</b> Yes      | <b>Cockpit:</b> Yes       |

## Dimensions

---

|                              |                                 |
|------------------------------|---------------------------------|
| <b>LOA:</b> 118' 2" (36.00m) | <b>LWL:</b> 108' 4" (33.00m)    |
| <b>Beam:</b> 39' 5" (12.00m) | <b>Min Draft:</b> 5' 2" (1.55m) |

## Speed, Capacities and Weight

---

|  |  |
|--|--|
| <b>Cruise Speed:</b> 18 Kts. (21 MPH)        | <b>Max Speed:</b> 21 Kts. (24 MPH)         |
| <b>Max Speed Range:</b> 800 Kts.             | <b>Displacement:</b> 306442.54418 Pounds   |
| <b>Gross Tonnage:</b> 464 Pounds             | <b>Water Capacity:</b> 1585.032312 Gallons |
| <b>Holding Tank:</b> 158.5032312 Gallons     | <b>Fuel Capacity:</b> 6340.129248 Gallons  |
| <b>Fuel Consumption:</b> 118.8774234 Gallons |  |

---

## Accommodations

---

**Total Cabins:** 6

**Total Berths:** 12

**Sleeps:** 12

**Total Heads:** 5

**Crew Cabin:** 1

**Crew Berths:** 4

**Crew Sleeps:** 4

**Crew Heads:** 2

---

## Hull and Deck Information

---

**Hull Material:** Aluminum

**Deck Material:** Teak

**Hull Configuration:** Catamaran

---

## Engine Information

---

**Engines:** 2

**Manufacturer:** MTU

**Model:** M90

**Engine Type:** Inboard

**Fuel Type:** Diesel

---

# DETAILED INFORMATION

---

## Accommodations

---

1 x Owners Suite

4 x 2 Berth Staterooms

1 x 3 Berth Stateroom

Extensive dining areas

Lounge on main deck

Owners suite on upper deck

## Electrical System

---

Generators: 2 x Perkins Sabre 5TG2AM

## Electronics and Navigational Equipment

---

GPS Furuno GP- 1850

Sounder: FCV – 600L COLOUR LCD

Radar: Furuno 1832 x 2

Autopilot : Saura SA10 (NEW)

Radio Furuno FM8500 X 2

## Galley

---

Refrigerator: 2 x Kelvinator , 1 x LG

Freezers: 5 x Fisher and Paykel

Stove: 1 x Bakbar , 1 x Westinghouse

1 x microwave

Hot water system: Rheem x 2

Water capacity: 3000 liters x 2

Dish washer

Washing machine : 2 x Miele

Dryer : 2 x Miele

Ice maker

Watermaker x 2

---

## Engine /Mechanical Equipment

---

Gearboxes: 2 x ZF BW 190A

Propellers: 2 x Veem Fixed Pitch

Bowthruster: 2 x Keypower 50HP

---

## Water Sports

---

2 x Aquapro Tenders with 90 HP Yamaha Outboard

2 x Honda Jetski AQUATRAX R12

---

## Exclusions

---

Owner's personal belongings.

---

## Disclaimer

---

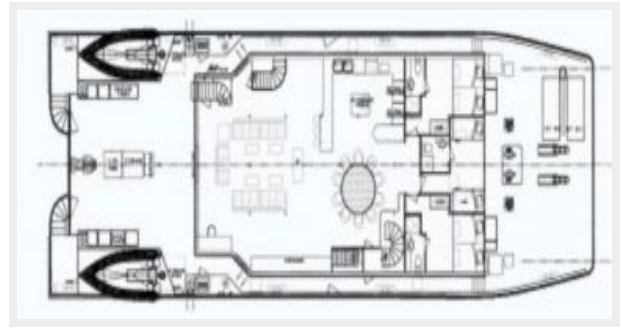
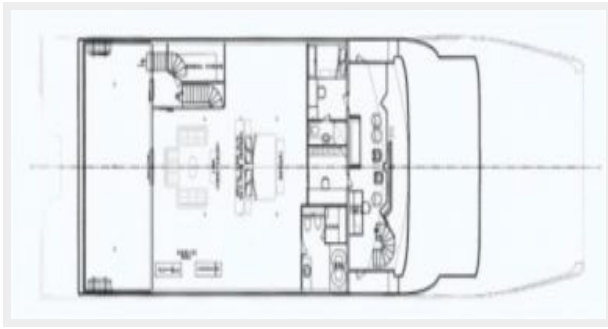
The Company offers the details of this vessel or yacht in good faith but cannot guarantee or

warrant the accuracy of this information nor warrant the condition of the vessel. A buyer should instruct his representatives, agents, or his surveyors, to investigate such details as the buyer desires validated. This vessel or yacht is offered subject to prior sale, price change, or withdrawal without notice.

# PHOTOS







# CONTACTS

---

Andrey Shestakov, leading yacht broker of the sales department of Shestakov Yacht Sales Inc. Shestakov Yacht Sales Inc., the official representative of the Miami/Fort Lauderdale FL headquarters.

## Contact details

---

Email: [andrey@shestakovyachtsales.com](mailto:andrey@shestakovyachtsales.com)

Web: [shestakovyachtsales.com/en/](http://shestakovyachtsales.com/en/)

## Telephones

---

USA: +1(954)274-4435

## Office hours

---

Monday – Saturday: **9:00 - 21:00** EDT

Sunday: **closed**

## Address

---



Harbour Towne Marina, 850 NE 3rd St,  
STE 213, Dania, FL 33004