

VOYAGER — SEATON



Builder: SEATON

Year Built: 2004

Model: Motor Yacht

Price: PRICE ON APPLICATION

Location: United Kingdom

LOA: 84' 0" (25.60m)

Beam: 23' 8" (7.20m)

Min Draft: 6' 11" (2.10m)

Cruise Speed: 10 Kts. (12 MPH)

Max Speed: 13 Kts. (15 MPH)

Our experienced yacht broker, Andrey Shestakov, will help you choose and buy a yacht that best suits your needs **Voyager — SEATON** from our catalogue. Presently, at Shestakov Yacht Sales Inc., we have a wide variety of yachts available on our sale's list. We also work in close contact with all the big yacht manufacturers from all over the world.

If you would like to buy a yacht **Voyager — SEATON** or would like help answering any questions concerning purchasing, selling or chartering a yacht, please call **+1(954)274-4435**

TABLE OF CONTENTS

TABLE OF CONTENTS	2
SPECIFICATIONS	4
Basic Information	4
Dimensions	4
Speed, Capacities and Weight	4
Accommodations	4
Hull and Deck Information	5
Engine Information	5
DETAILED INFORMATION	6
Accommodations	6
Engine /Mechanical Equipment	7
Electronics and Navigational Equipment	8
Audio And Visual Equipment	9
Tenders	10
Water Sports	10
Safety And Fire Protection	10
Galley	11
Laundry Room	12
Deck Equipment	12
Remarks	13
Exclusions	13
Disclaimer	13
PHOTOS	14
CONTACTS	19
Contact details	19
Telephones	19
Office hours	19
Address	19

SPECIFICATIONS

Basic Information

Category: Motor Yacht

Sub Category: Expedition

Model Year: 2004

Year Built: 2004

Refit Year: 2007

Country: United Kingdom

Fly Bridge: Yes

Cockpit: Yes

Dimensions

LOA: 84' 0" (25.60m)

Beam: 23' 8" (7.20m)

Min Draft: 6' 11" (2.10m)

Speed, Capacities and Weight

Cruise Speed: 10 Kts. (12 MPH)

Cruise Speed RPM: 1650 Kts.

Max Speed: 13 Kts. (15 MPH)

Max Speed RPM: 10 Kts.

Max Speed Range: 13 Kts.

Displacement: 341.7165061 Pounds

Gross Tonnage: 117 Pounds

Fuel Capacity: 8453.505664 Gallons

Fuel Consumption: 22.45462442 Gallons

Accommodations

Total Cabins: 3

Sleeps: 6

Total Heads: 4

Captain Cabin: True

Crew Cabin: 2

Crew Berths: 4

Crew Sleeps: 4

Hull and Deck Information

Hull Material: Steel

Deck Material: Teak and Steel

Hull Configuration: Displacement w/
Bulbous Bow

Hull Color: Grey

Engine Information

Engines: 2

Manufacturer: Caterpillar

Model: 3406C

Engine Type: Inboard

Fuel Type: Diesel

DETAILED INFORMATION

Accommodations

Main deck

Galley forward with day head to port and access via stairs to wheelhouse

Saloon

Roomy and comfortable large lounge area aft with ample seating and low coffee table. Entertainment unit to port with rise and fall TV. Dining area forward with extendable table to seat up to eight persons and semi open plan galley leading to wheelhouse and day head. Access from saloon to lower deck. Excellent visibility from large saloon windows. Access doors aft to cockpit

Lower Deck Guest Cabins

VIP forward via access stairs located in wheelhouse. Large double berth with ensuite facilities and ample stowage. Master cabin accessed from aft stairwell lower lobby. King size berth with ensuite and owners settee. Guest cabin to starboard with double berth and ensuite. Lower lobby utility cupboard and linen cupboard.

Lower Deck Crew Cabins

Twin berth cabin forward with ensuite facilities

Wheelhouse

Full instrumentation with raised seating area and table aft. Full chart draws stowage and two access doors to both side decks. Access aft to upper deck.

Upper Deck

Twin berth cabin to starboard with ensuite facilities. Access to flybridge forward and doors aft to open deck space with tenders and sunbathing areas.

Flybridge

Upper helm with seating and functional bridge position

Engine /Mechanical Equipment

Engines:	2 x Caterpillar 3406C – 365hp
Engine Hours:	Stb 2,375 Port 2,375 as at 24-02-12
Fuel:	DIESEL
Propulsion:	PROP SHAFT
Gearboxes:	Twin Disk 2.5:1
Steering:	Wills Ridley hydraulic with separate Emergency hydraulic system
Stabilisers:	Koopnautic NK302 hydraulic
Bow thruster:	Koopnautic hydraulic
Generators:	2 x Onan 30 MCGBA 30kva
Generator Hours:	Port: 5,378 Starboard: 5,108
Electricity:	230 / 440 V, 50 Hz Three Phase
Shore Power:	440 V AC / 50 Hz – 3 Phase
Frequency convertor	ASEA
Batteries	5 Banks of 24 DCV gel type
Air Conditioning:	4 x Chilled water units,

	Condaria reverse cycle with additional Condaria boiler for heat cycle
Bilge Pumps	2 x 1.5" Gianneschi 1 x DC & 1 x AC
Water Maker:	Village marine PW 1200 - 322 LPH Village marine SPW 600 – 96 LPH

Electronics and Navigational Equipment

WHEELHOUSE

Radar:	Furuno FAR 2XX7 series 96 NM - ARPA
Navtex:	Furuno NX 300
Chart plotting:	Nobletec Pro
Autopilot:	Navitron NT 88G
Gyro Compass:	Simrad GC 85 (2008)
Wind/Speed/Depth:	Simrad IS15 x 2
Loudhailer:	Hand held

AIS	Transas class B
GPS	Furuno GP32
Compass	Suunto Magnetic
Rudder indicator	Navitron
Plotter	Furuno Navnet
Monitors	3 x 19" screens

FLYBRIDGE

VHF	ICOMIC – M503
Plotter	Furuno Navnet
Monitor	14" daylight screen
Wind / Speed / Depth	Simrad IS15

COMMUNICATION EQUIPMENT

VHF 1	ICOM IC M601 DSC
SSB	FURUNO FS 2570
VHF	2 x ICOM IC M33
Inmarsat-C:	Sailor TI 3020C – GMDSS transceiver
Mini M	NERA F33
PC	3 x Hewlett Packard PC systems

Audio And Visual Equipment

Saloon - Samsung 42" LCD TV with Samsung home cinema. Blue Ray and PS3 games consol

Master Cabin – LG 36" LCD TV with integral DVD player

VIP Cabin – LG 36" LCD TV with integral DVD player

STB Cabin – LG 26" LCD TV with integral DVD player

Twin cabin / Captains cabin – LG 15" LCD TV with DVD player

Crew Cabin - LG 15" LG" LCD TV with DVD player

Tenders

Ribtec 5.35 m RIB with Yamaha 60hp four stroke outboard

Water Sports

2 x Sevylor Hudson 3.6m inflatable kayaks

GULL Calypso 3.35 m sailing dinghy

Safety And Fire Protection

Watertight Integrity

Hull is divided into 5 watertight compartments using watertight bulkheads

Between the Engine room and the lower lobby there is an internal watertight door and also between the Engine room and Lazarette.

Watertight door from Lazarette to aft platform

In the superstructure there are 5 external watertight doors to both side decks, aft cockpit and flybridge

Means of escape from crew, owner and guest's accommodation

Safety Equipment

2 x Beaufort 12 MAN SOLAS self launching life rafts with hydrostatic releases

2 x Round Life buoys with McMurdo lights

1 x MOB sling

1 x McMurdo EPIRB 406 GPS

1 x McMurdo EPIRB Float free

1 x Sailor SART

Fire Alarm System

General Alarm System: Minerva Marine / TYCO with 11 zones

Video Survey

4 x Camera system with 2 x Engine room 1 x Cockpit, 1 x Lazarette

Galley

GALLEY

2 x Frigaboot custom refrigeration

2 x Frigaboot custom freezer units

1 x NEFF Extractor above hob

1 x NEFF 4 ring electric hob

1 x NEFF Electric double oven

1 x NEFF Combination oven / microwave

1 x NEFF Dishwasher

1 x Salvo Wine cooler

1 x Scotsman Dishwasher

LAZARETTE

Chest Freezer

FIAC Air compressor

Laundry Room

LOWERLOBBY

Washingmachine – Bosch Logic XX8 large capacity

Tumbledrier – Whirlpool AWZ 321 large capacity

Deck Equipment

1 x 3.5 m Bezenonihydraulic passerelle

General ropes and fenders

1 x Removable side boarding ladder

1 x Removable High level side boarding ladder

1 x Removable swim ladder

2 x Jabsco 1 x Guest search lights

1 x Hydraulic Hiab type deck crane F60A

2 x Custom hydraulic anchor winches

2 x 160 KG Anchors in bowpockets

2 x 100 m of anchor chain 16 mm

2 x Electric custom aft capstans

Remarks

VOYAGER is a comprehensively equipped yacht built for extensive cruising and excellent fuel economy. She has benefitted from a major refit during 2007 with many enhancements and a full exterior repaint. Her wide beam makes for impressive interior volume and she has a flexible layout.

Exclusions

Owner's personal belongings.

Disclaimer

The Company offers the details of this vessel or yacht in good faith but cannot guarantee or warrant the accuracy of this information nor warrant the condition of the vessel. A buyer should instruct his representatives, agents, or his surveyors, to investigate such details as the buyer desires validated. This vessel or yacht is offered subject to prior sale, price change, or withdrawal without notice.

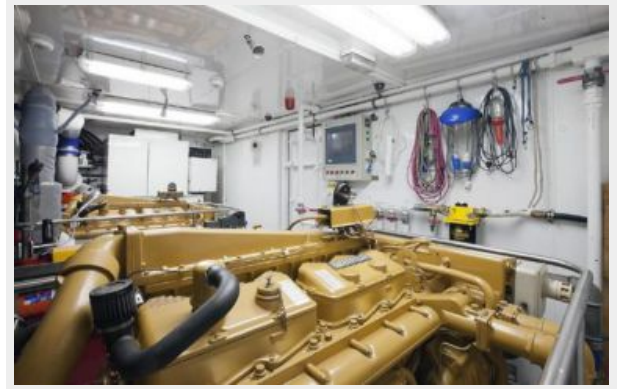
PHOTOS











CONTACTS

Andrey Shestakov, leading yacht broker of the sales department of Shestakov Yacht Sales Inc. Shestakov Yacht Sales Inc., the official representative of the Miami/Fort Lauderdale FL headquarters.

Contact details

Email: andrey@shestakovyachtsales.com

Web: shestakovyachtsales.com/en/

Telephones

USA: +1(954)274-4435

Office hours

Monday – Saturday: **9:00 - 21:00** EDT

Sunday: **closed**

Address



Harbour Towne Marina, 850 NE 3rd St,
STE 213, Dania, FL 33004