

## \***BAY HAWK — GRAND BANKS**



**Builder:** GRAND BANKS

**Year Built:** 2006

**Model:** Cruiser

**Price:** PRICE ON APPLICATION

**Location:** United States

**LOA:** 49' 0" (14.94m)

**Beam:** 16' 0" (4.88m)

**Max Draft:** 4' 4" (1.32m)

**Cruise Speed:** 24 Kts. (28 MPH)

**Max Speed:** 28 Kts. (32 MPH)

Our experienced yacht broker, Andrey Shestakov, will help you choose and buy a yacht that best suits your needs \*Bay Hawk — GRAND BANKS from our catalogue. Presently, at Shestakov Yacht Sales Inc., we have a wide variety of yachts available on our sale's list. We also work in close contact with all the big yacht manufacturers from all over the world.

If you would like to buy a yacht \*Bay Hawk — GRAND BANKS or would like help answering any questions concerning purchasing, selling or chartering a yacht, please call +1(954)274-4435

# TABLE OF CONTENTS

---

TABLE OF CONTENTS	2
SPECIFICATIONS	4
Basic Information	4
Dimensions	4
Speed, Capacities and Weight	4
Hull and Deck Information	4
Engine Information	4
DETAILED INFORMATION	5
Overview	5
Galley	5
Starboard Area	6
Helm Deck Area	6
Electronics	7
Master Stateroom	7
Master Head	8
Guest Stateroom	8
Cockpit	8
Hull	9
Engine Room	9
Electrical System	10
Other	10
Exclusions	10
Disclaimer	10
PHOTOS	12
CONTACTS	18
Contact details	18
Telephones	18
Office hours	18

---

Address

18

---

# SPECIFICATIONS

---

## Basic Information

---

**Category:** Cruiser

**Sub Category:** Express

**Model Year:** 2006

**Year Built:** 2006

**Country:** United States

**Cockpit:** Yes

## Dimensions

---

**LOA:** 49' 0" (14.94m)

**Beam:** 16' 0" (4.88m)

**Max Draft:** 4' 4" (1.32m)

## Speed, Capacities and Weight

---

**Cruise Speed:** 24 Kts. (28 MPH)

**Max Speed:** 28 Kts. (32 MPH)

**Displacement:** 48000 Pounds

**Water Capacity:** 176 Gallons

**Fuel Capacity:** 775 Gallons

## Hull and Deck Information

---

**Hull Material:** Fiberglass

## Engine Information

---

**Engines:** 2

**Manufacturer:** Caterpillar

**Model:** C-12

**Engine Type:** Inboard

**Fuel Type:** Diesel

---

# DETAILED INFORMATION

---

## Overview

---

Bay Hawk is a finely tuned and exceptional example of this phenomenal performing Ray Hunt hull. Bay Hawk offers a custom designed helmdeck/salon area with drop down TV, dining table, air-conditioning and enough seating for 10! She also offers a combination use area across from the galley that can be used as a sitting area. Bay Hawk also has a guest separate stall shower unlike other 49 Eastbays that only have a guest "wet" head.

A spacious cockpit deck welcomes you to board. There are two built-in bench seats facing aft. The port seat also conceals a walk-in entrance to the engine room. Up three steps is the large inviting helm deck that comfortably seats ten and can dine six. A STIDD helm seat also swivels to become part of leisure seating. Immediately below deck is a very spacious U galley with double undercounter SubZero refrigerators and Corian countertops. Opposite the galley is seating area that also features a sole to roof beautiful teak storage cabinet with adjustable shelving. The guest cabin is on port and offers two side to side berths and custom book shelving. Opposite is the guest/day head that also features a separate stall shower. Most 49 Eastbay guest heads only offer a wet head. The master stateroom is forward with a centerline queen berth that lifts up for storage and en suite head with separate stall shower. Sole throughout is teak and holly. Interior wood is satin finished teak with a high gloss finish on teak trim. Adjustable halogen lighting is also throughout.

## Galley

---

- U shaped on port
- Corian counters with teak fiddles
- Large single stainless steel sink and Corian flush covers with teak cutting boards
- Grohe single lever faucet for pressurized hot and cold water
- Grohe soap dispenser
- Custom teak mug rack
- Teak and glass doored liquor and glass storage cabinet inboard
- Seaward 3 burner electric cooktop with custom storage beneath
- Reach-in corner freezer aft
- Reach-in corner storage forward
- (2) under counter SubZero refrigerators, on with ice-maker
- Microwave/Convection oven in overhead cabinet
- Custom lighting over countertops
- VHF handset mounted on aft bulkhead
- (1) opening screened port with curtain

---

## Starboard Area

---

This area provides comfortable seating adjacent to the galley with a large enough storage cabinet for hard to store items.

- Settee that converts to single berth with removable back cushions
- Custom full height large teak storage cabinet with double doors and adjustable shelving
- Teak end table
- (2) opening screened ports with curtains
- Well designed space that can be used for sleeping or sitting. It could be used as sleeping for a child, extra hand, captain or significant storage. Identical space as found on the 54 Eastbay
- Sliding double doors for privacy
- Built-in bureau forward with beveled mirror above

---

## Helm Deck Area

---

The helm deck gets double use as helm and salon area. It is bright and airy with good outdoor visibility. There are mesh screens on outside of windows that allow privacy and sun shading. There is also a set of opaque screens for full privacy and a fine mesh door screen to keep biting bugs out. This area is also air-conditioned with teak built-in port and starboard large corner vents. The air-conditioning system is very efficient.

- Optional factory fabricated extended hard sides
- Tinted windows
- Large L-shaped settee on port side with gas assist lift up lids and cushions
- Teak inlaid gloss finish high/low dining table with drop leaf. Table slides in and out for easy access
- Port companion bench seat with foot rest and reversible backrest so this seating can be used for social gatherings as well as co-captain
- Norcold drink refrigerator under forward facing bench seat
- Port and Starboard custom holder for drinks, binoculars, etc.
- Large chart locker
- Bose Audio Visual System within port outboard teak locker
- Starboard bench seat with gas assist lift up lids and cushions
- Drop-down teak locker with large flat screen TV, with access to air, cable shore connection and DirecTV
- Stidd Helm Chair with electronic controls for full height and for/aft movement
- Stainless destroyer style wheel with varnished teak rim
- Helm was custom modified and enlarged to accommodate the electronics
- Secondary engine room hatch that dogs down for added quiet
- (2) overhead opening hatches with Oceanair black out shade and screen
- (2) 16,000 BTU reverse cycle A/C and heat Marineair units with digital thermostats

- 12 Volt breaker panel
- 110 Volt breaker panel
- Trace Inverter full function remote control monitor panel
- Polycarbonate aft enclosure with Strataglass door

---

## Electronics

---

- Raymarine E120 MFD, chartplotter and radar w/integrated GPS
- Raymarine E80 MFD, chartplotter & Radar w/integrated GPS on port side overhead
- Raymarine 5S 48" open array radar antenna
- Raymarine 125 GPS sensor
- Raymarine DSM300 digital depth sounder
- Raymarine/Sirius Weather Module with antenna
- Raymarine ST8001 auto pilot
- Raymarine ST 60 TriData, depth/speed/water temperature
- Raymarine ST 60 Wind, digital speed/analog direction
- Raymarine 15: E Series remote monitor
- Navionics charts
- Sirius weather
- Standard Quantum VHF radio w/Hailer & Fog horn
- VHF RAM microphone in galley
- Beam Iridium RST Satellite phone
- SeaTel SAT TV antenna
- DirecTV receiver
- Computer, SL Pro 12v w/windows XP
- Wireless keyboard
- Wireless mouse
- Nobeltec Navigation software
- Digital 4000 Cellular amplifier and antenna
- Syrens WIFI amplifier
- TV & FM antenna
- Telephone Cable TV shore inlet

---

## Master Stateroom

---

- Customized centerline island queen berth widened by 6" w/custom built mattress
- (2) swing away reading lights at berth forward bulkhead
- Lower aft part of berth raises up on gas assist shocks to reveal large storage area
- (2) pull-out drawers at foot of berth
- (2) full bureaus and (1) full height hanging locker were custom designed for additional storage alongside the berth
- Full length teak framed mirror

- Additional overhead halogen lighting installed
- A/C airflow split into (2) vents and relocated to provide uninterrupted sleeping
- A/C compressors in engine room
- 16,000 BTU reverse cycle heat and air-conditioner with remote mounted (in engine room) compressors
- Screened opening ports
- Overhead opening hatch with Oceanair sliding screen and sunshade

---

## Master Head

---

- Added A/C and heat and vent
- VacuFlush freshwater head
- Separate stall shower with Corian sole and custom teak and glass folding door
- Custom Corian countertops
- Abundant storage
- TankWatch level indicator
- Electric on/off switch for VacuFlush. This keeps pumping quiet during the night
- Opening screen port window
- (2) large storage areas plus drawer

---

## Guest Stateroom

---

- (2) Athwartship twin berths
- Teak hanging locker between berths
- Custom overhead book shelves with fiddles
- Opening port windows with screens
- (2) Stainless steel GB directional reading lights
- Adjustable air handler

---

## Cockpit

---

- Teak decking
- Molded-in steps to side decks for easy access
- Transom door to swim platform
- TNT extended hydraulic swim platform that lowers for dinghy mounting with dinghy chocks. Can accommodate up to an 11' dinghy. TNT lift was factory installed
- Stainless side grab rails added for easy boarding
- Engine room access from cockpit through a hinged door (with heavy-duty gas assisted lifts) down stairs, not a ladder
- (3) large hatches open for storage of equipment, golf clubs or other gear
- Floodlights and (3) additional Cantaluppi flush lights under the aft overhang, along with



under coaming cockpit courtesy lights

- Rear facing bench seating with cushions on port and starboard
- Hot and cold transom shower

## Hull

---

- Flag blue hull with white bootstripe
- Awlgrip Moondust nonskid on side and fore decks
- Epoxy barrier coated by factory - (2) coats under bottom paint
- Solid fiberglass below waterline. Vacuum bagged cored above waterline

## Engine Room

---

- (4) 16,000 BTU reverse cycle A/C & heat units with (2) additional air handlers in guest staterooms. Helm deck has (2) units, (1) in galley area and (1) in master cabin. Forward AC compressors relocated to engine room for sleeping quiet. Dehumidifier setting on all units
- Caterpillar Marine Power Displays at helm
- Twin Disc quick shift gears
- Kobelt single lever engine/gear controls
- Engine synchronizer with master/slave selector switch
- Dripless shaft seals
- SidePower 11 hp 24v dual propeller bowthruster w/joystick control at helm
- Fire suppression system w/engine shut down
- Alarm panel for engine oil pressure, engine water temp, bilge pumps, exhaust water temp, generator on, engine room light
- Racor crossover dual fuel filter system for each engine
- Single Racor fuel filter for generator
- Computank display for fuel, water, voltage and battery condition and levels
- Bennet trim tabs control w/position indicator at helm
- Rudder angle indicator
- Fuel transfer pump - forward to aft tank
- Watermaker prep - wiring and plumbing
- Jabsco dockside water inlet w/regulator and quick disconnect
- 12 volt DC oil change system for engines and generator
- 12 volt DC fuel transfer pump
- (3) bilge pumps w/alarms
- (20) gallon water heater, engine or 110v AC
- Freshwater engine room faucet w/hose
- Saltwater washdown, foredeck anchor locker
- (3) windshield wipers w/speed control, auto park and washer
- Shaft spur line cutters on shafts

- Power assisted steering
- SeaLand VacuFlush freshwater heads
- SeaLand macerator pump for holding tank discharge

## Electrical System

---

- 110/220 volt AC system
- 12 volt DC system
- Onan 13 KW generator w/engine room remote start & gauges, upgraded from STD
- Gas/water separator generator exhaust for quiet discharge
- Trace PS 2512M-2500 watt inverter charger
- Cablemaster 50 amp 75' shore power cord system
- Custom AC/DC electrical panel
- Separate electronics breaker panel above helm
- Trace full function remote control monitor panel
- GFCI outlets - galley, engine room & heads
- 24 volt battery charger for bowthruster batteries
- 12 volt 50 amp battery charger for engines, generator and house batteries
- Battery condition indicator meter
- (7) AGM batteries, engine start, house, inverter
- (2) Gel batteries, bow thruster
- Battery parallel switch at helm
- Aqua Signal 110 volt fluorescent engine room lights
- Kahlenberg air horn, powder coated white

## Other

---

- Maxwell 12 volt chain windlass w/150' chain, remote at helm
- Delta 45 lb, Fast Launch Quick Set anchor
- Stainless Swim ladder, folding under platform
- Aft deck Polycarbonate enclosure w/Strataglass door
- Full four sided window covers, Texilene, cream Stamoid, center split screen entrance helmdeck door
- Padded helmdeck table cover

## Exclusions

---

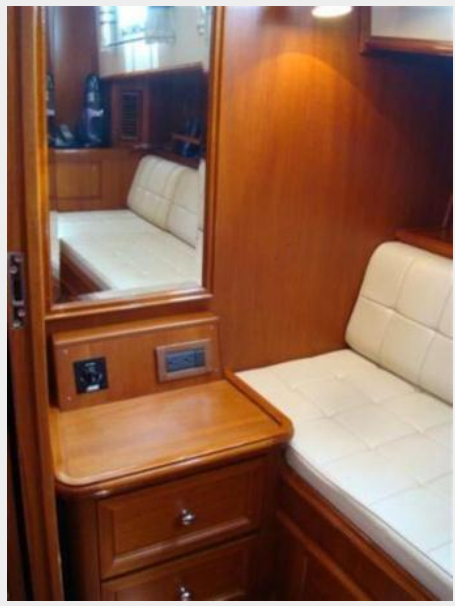
Owner's personal belongings.

## Disclaimer

---

The Company offers the details of this vessel or yacht in good faith but cannot guarantee or warrant the accuracy of this information nor warrant the condition of the vessel. A buyer should instruct his representatives, agents, or his surveyors, to investigate such details as the buyer desires validated. This vessel or yacht is offered subject to prior sale, price change, or withdrawal without notice.

# PHOTOS



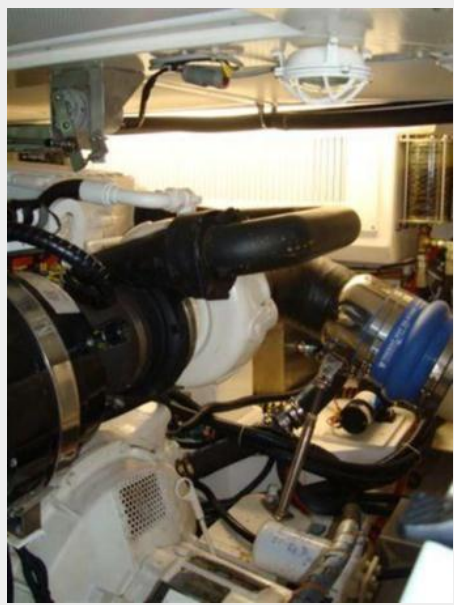




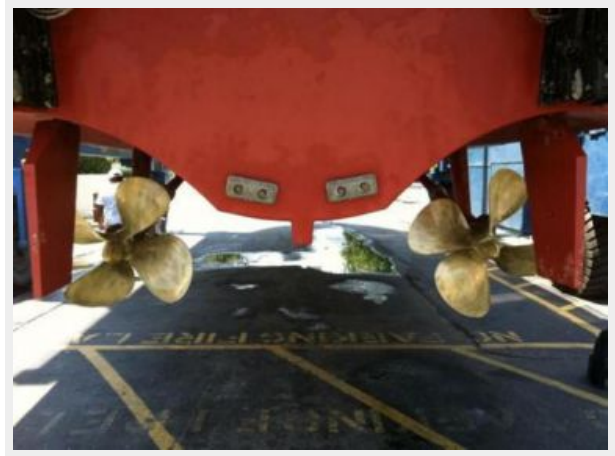












---

# CONTACTS

---

Andrey Shestakov, leading yacht broker of the sales department of Shestakov Yacht Sales Inc. Shestakov Yacht Sales Inc., the official representative of the Miami/Fort Lauderdale FL headquarters.

---

## Contact details

---

Email: [andrey@shestakovyachtsales.com](mailto:andrey@shestakovyachtsales.com)

Web: [shestakovyachtsales.com/en/](http://shestakovyachtsales.com/en/)

---

## Telephones

---

USA: +1(954)274-4435

---

## Office hours

---

Monday – Saturday: **9:00 - 21:00** EDT

Sunday: **closed**

---

## Address

---



Harbour Towne Marina, 850 NE 3rd St,  
STE 213, Dania, FL 33004