

BEJUMAR — HALLBERG-RASSY



Builder: HALLBERG-RASSY

Year Built: 1997

Model: Cruising Sailboat

Price: PRICE ON APPLICATION

Location: Spain

LOA: 48' 7" (14.80m)

Beam: 14' 2" (4.30m)

Max Draft: 6' 3" (1.90m)

Our experienced yacht broker, Andrey Shestakov, will help you choose and buy a yacht that best suits your needs **Bejumar — HALLBERG-RASSY** from our catalogue. Presently, at Shestakov Yacht Sales Inc., we have a wide variety of yachts available on our sale's list. We also work in close contact with all the big yacht manufacturers from all over the world.

If you would like to buy a yacht **Bejumar — HALLBERG-RASSY** or would like help answering any questions concerning purchasing, selling or chartering a yacht, please call **+1(954)274-4435**

TABLE OF CONTENTS

TABLE OF CONTENTS	2
SPECIFICATIONS	4
Basic Information	4
Dimensions	4
Speed, Capacities and Weight	4
Accommodations	4
Hull and Deck Information	4
Engine Information	5
DETAILED INFORMATION	6
Accommodations	6
Audio And Visual Equipment	6
Deck Equipment	6
Electrical System	7
Electronics and Navigational Equipment	7
Engine /Mechanical Equipment	7
Remarks	7
Sails and Rigging	7
Exclusions	8
Disclaimer	8
PHOTOS	9
Sistership photo	9
Saloon portside	10
Saloon looking forward	10
lley	10
Aft cabin	10
Forward cabin	10
Midships cabin	11
CONTACTS	12

Contact details	12
Telephones	12
Office hours	12
Address	12

SPECIFICATIONS

Basic Information

Category: Cruising Sailboat

Model Year: 1997

Year Built: 1997

Country: Spain

Dimensions

LOA: 48' 7" (14.80m)

LWL: 39' 1" (11.90m)

Beam: 14' 2" (4.30m)

Max Draft: 6' 3" (1.90m)

Speed, Capacities and Weight

Water Capacity: 243.03828784 Gallons

Holding Tank: 0.528344104 Gallons

Fuel Capacity: 174.35355432 Gallons

Accommodations

Total Cabins: 3

Total Berths: 6

Sleeps: 6

Total Heads: 2

Hull and Deck Information

Hull Material: GRP

Deck Material: Teak

Hull Color: white

Hull Finish: Stainless Steel

Hull Designer: German Frers

Engine Information

Engines: 1

Manufacturer: Volvo Penta

Model: TAMD31S

Engine Type: Inboard

Fuel Type: Diesel

DETAILED INFORMATION

Accommodations

- Interior in selected mahogany, handrubbed and treated to a silk smooth finish - Floors in teak with light inlays, varnished and with carpeting - Ceilings lined with panels - Wooden inner frames for skylights

-Accommodation for 7 persons in 3 cabins: - Headroom 1.92m - Owner's cabin aft with extra wide double berth to starboard, single berth to port - Ensuite wc/showerroom in white laminate with separate shower - Guest cabin forward with double V-berth with infill - Guest cabin to portside with upper and lower single berths - Guest wc/showerroom in white laminate with separate shower to starboard

Saloon: - L-shaped seating to portside - Two seats to starboardside - Centre-line drop leaf table - Chart table with drawers to portside - Oilskin hanging locker

Galley: - Corian white work surfaces - Double stainless steel sinks - Well insulated Frigomatic fridge with access from worktop - Sea water cooled with 24v electric compressor - Frigomatic freezer (behind navigation station) - Force 10 3-burner gimballed gas stove with oven

- Curtains in all skylights and portlights - Hot and cold fresh water pressure system - Fresh water foot pump - Hot water heater - 2x PAR pump toilets

Audio And Visual Equipment

- Stereo/CD player in saloon

Deck Equipment

- Folding bimini with frames - Enclosed cockpit covers and frame - Sun awning - 100 cm diameter hide covered stainless steel steering wheel on GRP pedestal - Highly varnished teak cockpit table fitted on pedestal

- 2.70m tender with Yamaha 2.5 hp outboard (2011) - Radar reflector - Double guardrails on stainless stanchions - Fore and aft pulpits of open type - Pushpit seats - Separate compartment starboard of the cockpit for gas bottles - Bow ladder - Hot and cold shower on swim platform - Deck wash pump - Extra grab handles on aft deck - 2x large lazarettes and cockpit locker - Deck lights

- International navigation lights - Tricolour navigation light at masthead - All halogen lights - CQR 75 lb anchor - Lofrans 1,200w electric anchor capstan with motor below deck and controls from cockpit and at bow - Stemhead fitting with two incorporated anchor rollers

Electrical System

- 12/24v DC electric system - 24v 280 ah service batteries (2011) - 12v 140 ah gel engine start battery (2012) - 24v 100 amp general alternator - 12v 60 amp engine alternator - 32 amp shore power - Freedom Heart Interface battery charger/inverter 24 amp/24v/220v/50 Hz

Electronics and Navigational Equipment

- Compass with light - Autohelm ST50 log/wind/speed/depth instruments with cockpit repeaters - Philips Navigator GPS - Autohelm ST7000 autopilot at helm - Shipmate RS 8300 VHF

Engine /Mechanical Equipment

Engine accessible either from bolted hatch in cockpit or from passageway between main saloon and aft cabin.

- Volvo Penta TAMD31S 100 hp/74 kw 4 cylinder direct injection marine diesel, 1,400 hours (4.12) - Turbo and aftercooler - Fresh water cooling system - Oil cooler - RPM meter, temperature gauge and oil pressure instruments

- Acoustic and optic warning systems - Good sound insulation - Single lever control for rpm and gear shift - Aquadrive flexible link - Stainless steel shaft - Cutlass water lubricated rubber shaft bearing - 3-bladed fixed bronze propeller - 3-bladed folding J spare propeller

- 10 hp bowthruster - 24v bilge pump in lower bilge with float switch - 24v high output bilge pump with float switch and alarm at helm - Hand bilge pump

Remarks

- Teak deck sanded and newly sealed 2011 - New gel 140 amp starter battery 2012 - Batteries new 2011

Built under supervision of Germanischer Lloyd, certified by Germanischer Lloyd and delivered with a CE certificate and a CE plaquette for Category A (unlimited ocean voyages).

Sails and Rigging

Sloop rig: - Selden silver anodised aluminium alloy mast stepped on base on cabin top over reinforced bulkhead - Double spreaders - Selden silver anodised aluminium boom - Selden Mast AB rigging - Selden hydraulic in-mast furling for mainsail and hydraulic furling genoa - Internal jib and mainsail halyards - Removable cutter stay with runners - Aasselbors backstay tensioner -

Spinnaker pole on mast - Fitting for spinnaker boom and halyard

Winches: - 2x Lewmar 44 CST self-tailing halyard winches on mast - Lewmar 8C winch for spinnaker boom lift - Lewmar 64 CST primary winches - Lewmar 44 CST mainsheet winches

Sails: - Mainsail (2007) - Elvstrom genoa (2011) - Working jib - Cutter stay jib - Furling gennaker

Exclusions

Owner's personal belongings.

Disclaimer

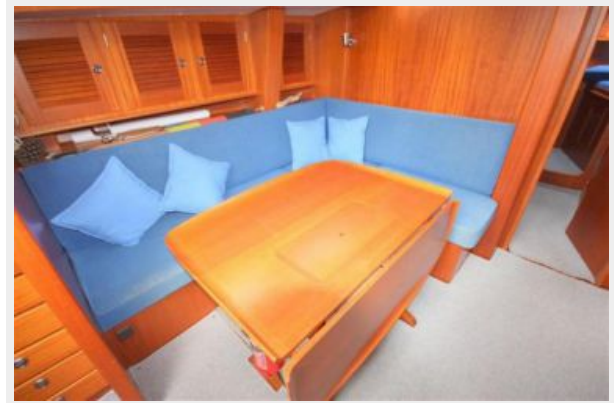
The Company offers the details of this vessel or yacht in good faith but cannot guarantee or warrant the accuracy of this information nor warrant the condition of the vessel. A buyer should instruct his representatives, agents, or his surveyors, to investigate such details as the buyer desires validated. This vessel or yacht is offered subject to prior sale, price change, or withdrawal without notice.

PHOTOS

Sistership photo



Saloon portside



Saloon looking forward



lley



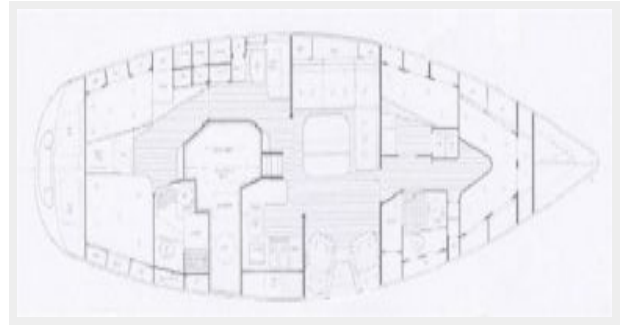
Aft cabin



Forward cabin



Midships cabin



CONTACTS

Andrey Shestakov, leading yacht broker of the sales department of Shestakov Yacht Sales Inc. Shestakov Yacht Sales Inc., the official representative of the Miami/Fort Lauderdale FL headquarters.

Contact details

Email: andrey@shestakovyachtsales.com

Web: shestakovyachtsales.com/en/

Telephones

USA: +1(954)274-4435

Office hours

Monday – Saturday: **9:00 - 21:00** EDT

Sunday: **closed**

Address



Harbour Towne Marina, 850 NE 3rd St,
STE 213, Dania, FL 33004