

SEA BREEZE — KAISERWERFT



Builder: KAISERWERFT

Year Built: 2005

Model: Motor Yacht

Price: PRICE ON APPLICATION

Location: Spain

LOA: 101' 9" (31.01m)

Beam: 22' 4" (6.81m)

Max Draft: 6' 1" (1.85m)

Cruise Speed: 23 Kts. (26 MPH)

Max Speed: 25 Kts. (29 MPH)

Our experienced yacht broker, Andrey Shestakov, will help you choose and buy a yacht that best suits your needs **Sea Breeze — KAISERWERFT** from our catalogue. Presently, at Shestakov Yacht Sales Inc., we have a wide variety of yachts available on our sale's list. We also work in close contact with all the big yacht manufacturers from all over the world.

If you would like to buy a yacht **Sea Breeze — KAISERWERFT** or would like help answering any questions concerning purchasing, selling or chartering a yacht, please call **+1(954)274-4435**

TABLE OF CONTENTS

TABLE OF CONTENTS	2
SPECIFICATIONS	4
Overview	4
Basic Information	4
Dimensions	5
Speed, Capacities and Weight	5
Accommodations	5
Hull and Deck Information	5
Engine Information	5
DETAILED INFORMATION	6
Accommodations	6
Audio And Visual Equipment	6
Crew Lounge	7
Deck Equipment	7
Electrical System	8
Electronics and Navigational Equipment	8
Engine /Mechanical Equipment	9
General Specifications	10
Flybridge	11
Galley	11
Guest Stateroom	12
Laundry Room	12
Office/Study	12
Safety And Fire Protection	12
Salon	13
Water Sports	13
Exclusions	14
Disclaimer	14

PHOTOS	15
Exterior 1	15
Exterior 2	15
Aft Deck	15
Stairs	15
Side	15
Bow	15
Salon 1	16
Salon 2	16
Galley 1	16
Galley 2	16
Cockpit	16
Owner's Cabin	16
En-Suite	17
Twin Cabin	17
Twin En-Suite	17
CONTACTS	18
Contact details	18
Telephones	18
Office hours	18
Address	18

SPECIFICATIONS

Overview

STYLISH, DISTINCTIVE HARMONY & ASSERTIVE SWEEPING LINES...

“31 METER YACHT CRAFTED AND CONCEIVED IN GERMANY BY KAISERWERT”

The sophisticated work of KaiserWerft, Sea Breeze showcases design and engineering craft at its best. Built in Germany in 2005, with every imaginable extra, fittings of the highest quality have ensured luxury on-board, with use of the finest materials, equipment and tools.

The exterior is futuristic. Assertive sweeping lines are balanced with a distinguished interior of luxury spaces that reflect contemporary yet graceful opulence. Form and function, comfort and attention to every detail invites guests to truly relax.

Sea Breeze is powered by twin 2000 HP MTU engines and is able to cruise at 23 knots with a maximum speed of 25 knots. She is RINA classed and has a range of 550 nautical miles.

“A mix of classic and contemporary flavour at its finest”

Basic Information

Category: Motor Yacht

Model Year: 2005

Year Built: 2005

Country: Spain

Fly Bridge: Yes

Cockpit: Yes

Dimensions

LOA: 101' 9" (31.01m)

Beam: 22' 4" (6.81m)

Max Draft: 6' 1" (1.85m)

Speed, Capacities and Weight

Cruise Speed: 23 Kts. (26 MPH)

Max Speed: 25 Kts. (29 MPH)

Max Speed Range: 550 Kts.

Displacement: 210000 Pounds

Gross Tonnage: 155 Pounds

Accommodations

Total Cabins: 4

Total Berths: 8

Sleeps: 8

Crew Cabin: 2

Crew Berths: 4

Crew Sleeps: 4

Crew Heads: 2

Hull and Deck Information

Hull Material: GRP

Deck Material: Teak

Engine Information

Engines: 2

Manufacturer: MTU

Engine Type: Inboard

Fuel Type: Diesel

DETAILED INFORMATION

Accommodations

- Owner's Suite (Main Deck)
 - Split level Double Cabin with sitting area, lower level king-size bed
 - Higher level en-suite bathroom with combination Jacuzzi/bath/shower, twin wash stand, WC and bidet
- Owner's cabin (Lower Deck)
 - Double Cabin with sitting area, desk and large wardrobe.
 - En-suite bathroom with combination bath/shower, washstand and WC.
- Guest Cabins (x2)
 - Twin cabins with shower room's en-suite
- Crew Cabins (x2)
 - Twin berth Cabins
- Crew Mess
 - Dining/rest area for 4 persons
- Crew Bathroom
 - Shower and WC

Audio And Visual Equipment

AUDIO VISUAL ENTERTAINMENT SYSTEMS

- Salon
 - Beo-Sound 9000 Audio/Hifi
 - BeoCord V8000 videorecorder
 - B&O DVD player
 - BeoVision 4-42 TV
 - Karthrein Sat receiver UFD590
 - Sonance Ceiling speaker
- Owner's Suite
 - BeoCenter2 audio/HiFi
- Main Deck
 - BeoVision 5 TV
 - HT 502 speakers
 - Karthrein Sat receiver UFD590
- Owner's Suite
 - BeoVision 5 TV

- Lower deck
 - HT 502 speakers
 - Karthrein Sat receiverUFD590
- Guest Cabins
 - BeoVision 6 TV
 - BeoCenter 2 audio/HiFi
 - HT 502 speakers
 - Karthrein Sat receiverUFD590
- Crew Cabins & Mess
 - 2x Sharp LC-15S1E TV
 - 2x Car radio
 - Karthrein Sat receiverUFD590
- Dining Area
 - BeoVision 6 TV
- Galley
 - Car radio
- Aft Deck & Boat Deck
 - Ceiling Speakers

Crew Lounge

- Crew Mess
 - Siemens Microwave
 - Siemens Refrigerator
 - Siemens Cooking stove
 - Siemens Air Extract Hood
 - AEG Freezer

Deck Equipment

- Anchor Windlass
 - 2x 3500 watt/24 volt
- Lofrans
 - VerticalAft Warping
- Capstans Lofrans
 - 2x1500watt/24VDC
- Ground Tackle Anchor
 - 2x 128 kgHigh Holding Power
- Chain
 - 2x 110 metres,12,5mm stud link
- Boat Crane
 - Besenzoni Hydraulic CraneType G 309 600 kg

- Passerelle
 - Besenzoni Hydraulic
- Passerelle Type
 - PI 383

Electrical System

AUXILIARY MACHINERY & ELECTRICAL SYSTEMS

- Water maker
 - AQUABASE, 200l per hour
- Generators
 - 2 x HFL
- Marine Generator Sets
 - 3 phase, 230/400 volts AC50 Hz/(60 kW)
- Perkins Base Engine
 - (4 Cyl. rated @ 1500 RPM)
- Electricity
 - 230 volts AC 1 phase 50 Hz
 - 400 volts AC 3 phase 50 Hz
- Shore Power
 - MAGNUS MARINE Electronic Conversion Shore
- Power Converter Output
 - 80 kVA, 180-520V AC 50-60 Hz, mono or 3 phase with synchronisation, dual shore cord
- Batteries
 - 24 volt DC Systems Gel
- Batteries with Dolphin chargers 2pcs.
 - 120A 3pole
 - 800Ah 24V Domestic
 - 400Ah 24V Engine Starting
 - 200Ah 12V Radio/Coms)
 - 200Ah 12V Service
- Inverter
 - Mastervolt 24V to 120V
- Converter
 - MAGNUS MARINE 400V to 230V

Electronics and Navigational Equipment

NAVIGATION EQUIPMENT

- Magnetic Compass
 - 1 x Cassens Plathmainhelm
- Sat. Compass
 - 1 x Simrad HS50
- Auto Pilot
 - Simrad AP50 Hand remote, heading signal from Simrad HS50 and Rategyro/Fluxgate RFC35R
- Depth Sounder
 - Forward looking sonar FLS Gold
- Radar
 - Simrad RA83 Single 4' Scanner GPS signals from Simrad HS50 & Simrad GN33S/W
- Weather Fax
 - Navtex NAV-5
- Chart plotter
 - Simrad chart system CS 5515" TFT
- Wind Inst.
 - Simrad IS 15 with lot/log

Engine /Mechanical Equipment

MACHINERY

- Main Engines
 - 2 x MTU 16V 2000 M91 Charge Air Cooled, Turbocharged, Electronic Governed, Marine Diesel Engines 2000 HP (1471 kW) @ 2350 RPM
- Gearboxes
 - ZF 2555, reverse/reduction gearboxes, ratio 1:2.462
- Shafts/Propellers
 - "Inline" shafts of Aquamet steel alloy, water lubricated stern bearing + 2 outboard "P" brackets. 2 x Propellers, Dia. 1080 mm 5 Blade NAB running in partial tunnels
- Speed Max.
 - Speed about 25 knots

TANK CAPACITIES & RANGE

- Fuel
 - 14,000 litres, 3699 USG
- Water
 - 2,000 litres, 528 USG With freshwater cooling system
- Grey Water
 - 1,200 litres, 317 USG
- Black Water
 - 800 litres, 264 USG
- Lub oil
 - 450 litres, 106 USG
- Range
 - Approx 550 NM @ 23 Kt

ANCILLARY EQUIPMENT

- Steering System
 - BCS twin hydraulic ram, twin balanced rudder arrangement with interlink.
- Bow Thruster
 - 36 kW/50 hp, Hyd. powered via PTO
- Stern Thruster
 - 36 kW/50 hp Hyd. powered via PTO+ WESMAR Stabilizers
- Fuel Filters
 - Racor D-75/1000 MAX Racor D-*500 MAM30
- Fire/Bilge Pump
 - 1 x Biergans AM 50 EM2 T50, 40m³/hr 400VAC
- 1 x ACM
 - 401 BT, 24VDC, 14m³/hr 4x Jabsco 3550
- Boiler
 - 2 x G&R, 200 litre Electric Hot Water Boiler 5+5kw
- WC's
 - 6 x TECMA Marine WCs, sea water flush plus integral Water bidet
- Air Conditioning
 - HFL Chilled Water AC Compressor Plant 280,000 BTU Individual fan coil units for each room

General Specifications

DIMENSIONS

- Length Overall
 - 102' 31 metres
- Beam
 - 22' 4" 6.8 metres
- Draft
 - 5' 5" 1.85 metres
- Depth
 - 10' 2" 3.1 metres
- Displacement
 - 95 tonnes (lightship)
- Tonnage
 - 155 GRT 46 NT

CONSTRUCTION

- Year Built
 - 2005
- Builder
 - KaiserWerft GmbH, Saal a Donau, Germany
- Construction
 - Glass Reinforced Polyester (GRP)
- Deck Material
 - Teak Laid Decks
- Classification
 - RINA 100-A-.1 1 "Y"

Flybridge

- Fly
 - Grill

Galley

- Main Galley
 - Miele 4 ring cooking stove
 - Miele Air Extract Hood
 - Miele Oven

- Miele Dishwasher
- Miele Microwave
- Miele Steam cooker
- G.E.Footcenter;Icemaker
- Miele Freezer
- Miele Refrigerator
- Miele Coffee Machine
- Universal Trash Compactor
- Miele Dish warmer
- Liebherr Wine cooler

Guest Stateroom

- Coolmatic Refrigerator

Laundry Room

- Laundry
 - Miele Washing machine
 - Miele Dryer

Office/Study

- Network
 - 2x patchfeld switch HPprocurve 2124
 - Wall sockets in all spaces throughout yacht
- Printer Network
 - Brother MFC9030 printer/fax/copy
- Internet
 - Connection with the Simrad F55System
- Facsimile
 - Interfaced via PABX to SATCOM, GSM & PSTN

Safety And Fire Protection

SAFETY & SECURITY EQUIPMENT

- Safety
 - Watertight bulkheads 4 towing, RopeRocket Line Thrower

- 1 x JOTRON SART
- 1 x JOTRON EPIRB
- 1 x Axis50 GMDSS VHF
- Life Rafts
 - 3 x 8 Man VIKINGRescYou™ Raft Pro, Self-righting life rafts with SOLAS “B” packs in GRP containers with float free hydrostatic release units.
- Lifebuoys
 - 4 x Lifebuoys (2 with buoyant lines, 2 with smoke/light)
- Lifejackets
 - 14 x SOLAS Lifejackets 4 x SOLAS (Child size)
- Fire Fighting Engine Room
 - CO2 Installation – Batec
- Fire Hydrant
 - Sea Water Fire Hydrant System - fore & aft deck
 - Fire extinguisher blanket
 - Portable Fire Extinguishers

Salon

- Salon
 - Wesamat Ice maker
 - Miele Refrigerator
 - Liebherr Refrigerator

Water Sports

TENDERS & WATERSPORTS EQUIPMENT

- Tender
 - Novamarine 400 DL, 4 metre RIB+ Honda 50 hp outboard
- Jetski
 - 1x Bombardier XPDI - Special hydraulicslip system

Exclusions

Owner's personal belongings.

Disclaimer

The Company offers the details of this vessel or yacht in good faith but cannot guarantee or warrant the accuracy of this information nor warrant the condition of the vessel. A buyer should instruct his representatives, agents, or his surveyors, to investigate such details as the buyer desires validated. This vessel or yacht is offered subject to prior sale, price change, or withdrawal without notice.

PHOTOS

Exterior 1



Exterior 2



Aft Deck



Stairs



Side



Bow



Salon 1



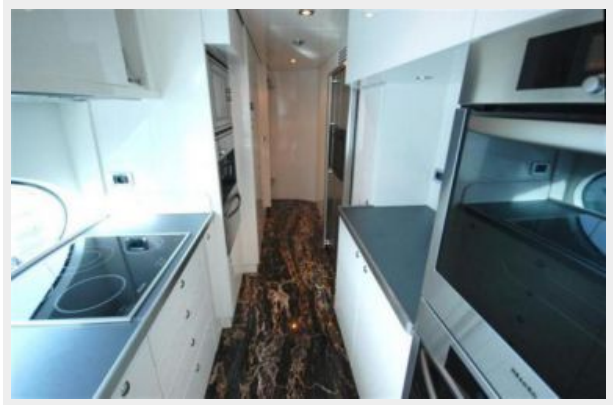
Salon 2



Galley 1



Galley 2



Cockpit



Owner's Cabin



En-Suite



Twin Cabin



Twin En-Suite



CONTACTS

Andrey Shestakov, leading yacht broker of the sales department of Shestakov Yacht Sales Inc. Shestakov Yacht Sales Inc., the official representative of the Miami/Fort Lauderdale FL headquarters.

Contact details

Email: andrey@shestakovyachtsales.com

Web: shestakovyachtsales.com/en/

Telephones

USA: +1(954)274-4435

Office hours

Monday – Saturday: **9:00 - 21:00** EDT

Sunday: **closed**

Address



Harbour Towne Marina, 850 NE 3rd St,
STE 213, Dania, FL 33004