

## ONE MORE TIME — OCEAN YACHTS



**Builder:** [Ocean Yachts](#)

**Year Built:** 2001

**Model:** Sport Fisherman

**Price:** PRICE ON APPLICATION

**Location:** United States

**LOA:** 70' 0" (21.34m)

**Beam:** 19' 8" (5.99m)

**Min Draft:** 5' 0" (1.52m)

**Cruise Speed:** 32 Kts. (37 MPH)

**Max Speed:** 36 Kts. (41 MPH)

Our experienced yacht broker, Andrey Shestakov, will help you choose and buy a yacht that best suits your needs **One More Time — Ocean Yachts** from our catalogue. Presently, at Shestakov Yacht Sales Inc., we have a wide variety of yachts available on our sale's list. We also work in close contact with all the big yacht manufacturers from all over the world.

If you would like to buy a yacht **One More Time — Ocean Yachts** or would like help answering any questions concerning purchasing, selling or chartering a yacht, please call **+1(954)274-4435**

# TABLE OF CONTENTS

TABLE OF CONTENTS	2
SPECIFICATIONS	5
Basic Information	5
Dimensions	5
Speed, Capacities and Weight	5
Accommodations	5
Hull and Deck Information	5
Engine Information	6
DETAILED INFORMATION	7
Accommodations	7
Galley and Laundry	7
Electronics and Navigation	8
Electrical	8
Deck Equipment	8
Cockpit	9
Flybridge	10
Engine Room and Mechanical	10
Exclusions	10
Virtual Tours, Video, Photos, Layouts & More at ....	11
Exclusions	11
Disclaimer	11
PHOTOS	12
Aft View	12
Bow View	12
Engine Room	12
Side View	12
Salon I	12
Salon II	12

Salon III	13
Dining Area	13
Galley I	13
Galley II	13
Staircase to Staterooms	13
Custom Galley Flooring	13
Companionway	14
Master Stateroom I	14
Master Stateroom II	14
Master Stateroom III	14
Master Stateroom Head	15
VIP Stateroom I	15
VIP Stateroom II	15
VIP Stateroom III	15
VIP Head	16
Twin Stateroom I	16
Twin Stateroom Head	16
Twin Stateroom II	16
Crew Quarters / Bunk Stateroom	17
Day Head	17
Laundry Room	17
Interior Stairway to Bridge	17
Helm Seating	18
Helm I	18
Helm II	18
Helm III	18
Enclosed Bridge Door to Mezzanine	18
Enclosed Bridge Settee	18
Enclosed Bridge Wet Bar w/ TV and Refrig	19

---

Enclosed Bridge Wet Bar	19
Cockpit Sunshade	19
Cockpit	19
Cockpit Drink Locker	20
Cockpit Bait Station with Freezer	20
Fishbox	20
Cockpit Rod Storage	20
Teak Covering Board	20
Transom Livewell	20
Port Side	21
Lazarette	21
Starboard Side at Dock	21
Dock View	21
Starboard Side	21
<b>CONTACTS</b>	<b>22</b>
Contact details	22
Telephones	22
Office hours	22
Address	22

---

# SPECIFICATIONS

---

## Basic Information

---

**Category:** Sport Fisherman

**Sub Category:** Convertible

**Model Year:** 2001

**Year Built:** 2001

**Country:** United States

**Fly Bridge:** Yes

**Cockpit:** Yes

## Dimensions

---

**LOA:** 70' 0" (21.34m)

**Beam:** 19' 8" (5.99m)

**Min Draft:** 5' 0" (1.52m)

## Speed, Capacities and Weight

---

**Cruise Speed:** 32 Kts. (37 MPH)

**Max Speed:** 36 Kts. (41 MPH)

**Displacement:** 112000 Pounds

**Water Capacity:** 370 Gallons

**Fuel Capacity:** 1865 Gallons

## Accommodations

---

**Total Cabins:** 4

**Total Berths:** 6

**Total Heads:** 4

## Hull and Deck Information

---

**Hull Material:** Fiberglass

**Deck Material:** Fiberglass

**Hull Configuration:** Modified V-Hull

---

## Engine Information

---

**Engines:** 2

**Manufacturer:** Detroit Diesel

**Model:** 16V2000

**Engine Type:** Inboard

**Fuel Type:** Diesel

---

# DETAILED INFORMATION

---

## Accommodations

---

Impressive designer interior offers four staterooms with four private heads. The exceptionally large, full-beam master is amidships and boasts a king bed, dressing table, "his & hers" cedar-lined closets and ensuite head.

The large VIP stateroom is forward with queen bed, dressing table and ensuite head. Port and starboard are two additional staterooms. The port stateroom has twin flex berths and ensuite head. The starboard stateroom has upper/lower berths and could be utilized for crew. Aft of this stateroom is a day head. Aft of the port stateroom is a laundry/utility room with side by side washer/dryer and custom clothes hamper. In addition, there is a six foot, hinged countertop and a freezer in the port bulkhead, plus lots of storage and cabinet space.

The salon has been customized with teak paneled bulkheads, hi-gloss teak countertops/cabinetry, upholstered designer chairs/sofas, teak end tables accented with a custom lamp, custom hi-gloss teak hi-lo table with storage and custom carpeting. The starboard teak cabinet houses the entertainment center with Bose lifestyle stereo system, pop-up color TV, wine chiller and wet bar with icemaker.

Window treatments have custom silhouette blinds and valance panels with tinted salon windows for privacy and added coolness. Forward of the salon bulkhead to port is the interior staircase leading to the enclosed command bridge.

Going forward of the salon and up one step to starboard is a large L-shaped dinette with hi-gloss teak table that slides out to make more room as well as two designer dining chairs. Across from the dining table to port is the large, well-appointed galley, featuring Corian countertops, Corian backsplash and spacious teak cabinets/storage drawers. The galley has a full range of stainless appliances, including Sub-zero under-counter refrigerators, Ceran range with oven and Whirlpool convection microwave.

---

## Galley and Laundry

---

- Ceran 220V, 4 burner range w/oven
- S/S sink
- Sub-zero under-counter refrigerators w/1 120V freezer
- Whirlpool Microwave w/convection oven

- Whirlpool trash compacter
- Whirlpool dishwasher
- Instant hot water
- Central vacuum system
- Water tank level gauge
- Large Pantry
- Lots of counter space
- Laundry: Washer/Dryer; Clothes hamper; Storage

---

## Electronics and Navigation

---

- Northstar 961 XD w/10" screen, GPS Plotter
- Northstar 951X GPS Plotter w/961x, upgraded 2010
- (2) icom m-127 vhf radios - new 2011
- Standard Horizon VHF radio in salon
- Furuno FR 7112, 72 mi Radar
- Furuno FCV-1200L color Fishfinder
- DDEC single lever electronic controls w/engine synch & trolling valves
- Raytheon ST60 digital depth/speed/sea temp
- Danforth flush mount Compass
- Vetus 24V Bow Thruster
- Robertson AP 20 Autopilot
- KVH g4 Tracvision SAT TV
- Sony DSS receivers
- Blaupunkt AM/FM/CD
- Panasonic KX-TA624 multi-line phone system w/intercom

---

## Electrical

---

- 240v/50a Shore Power w/auto cord reel/port & stbd 80' cords & T/ISO boost transformers
- 120v Duplex electrical outlets
- 24v & 110v engine room lights
- Voltmeters & battery condition indicator
- Zoned Chilled Water Air Conditioning System w/2 chillers
- Westerbeke FWC 32kw Genset in sound shield
- Heavy duty batteries w/automatic battery chargers & parallel system
- Dyna Plate Ground System
- Underwater Lights @ transom

---

## Deck Equipment

---



- Anchor/ Anchor Line
- Automatic Bilge Pumps
- High Water Bilge Alarm
- Engine Alarm System
- (5) Interconnected deluxe fire/smoke detectors
- 2 cluster air horns
- Outriggers
- Quick-action ball-type seacocks on all thru-hull fittings below water line
- Hydraulic power steering
- Aluminum bow/hand rails
- Aluminum bridge rail w/ladder
- White hand rails, side, port & stbd
- Forward deck hatch
- (12) S/S cleats - (2) stern; (2) bow; (4) spring
- (2) hawse pipes
- Fire extinguishers
- Bonding throughout

## Cockpit

---

- 156 square cockpit dimension
- Flybridge ladder to enclosed bridge w/acrylic covering system for opening
- Tinted aft salon window & door
- Lazarette access
- Teak covering boards
- Teak cockpit sole w/perimeter frame
- Cockpit sunshade
- (2) Boarding steps
- Transom gate & hinged stern door
- (4) Rod holders
- Tackle locker
- Cockpit (side) lockers
- Refrigerated fish box w/pump
- Bait center w/freezer
- Live baitwell (transom)
- Sink w/FW spigot & bait cutting boards
- FW/SW washdowns
- Lights in overhang
- (New) canvas rear bridge window sunshades
- Canvas transom sunshade

---

## Flybridge

---

- Fully encl FBG bridge w/entry door and interior/exterior access
- Forward helm station w/full instrumentation
- Windshield Wipers
- (2) Lewmar hatches in hardtop
- JVC color TV/DVD combo
- Outside steering station w/electronic controls
- Adj Stidd helm chair
- Double-wide Stidd companion seat on storage box
- Upgraded carpeting/upholstered valances
- Custom over-sized aft-facing seat w/storage holding 6-8 man life raft
- Lounge seating w/table
- Large wet bar w/u-line refrg/icemaker/storage & corian countertops
- Perma Pub liquor dispenser
- Spreader Lights

---

## Engine Room and Mechanical

---

- Awlgrip white engine room
- Hot water heater
- Electric oil change system (engines, transmissions, genset)
- Full sound/heat insulation in engine room
- Fireboy automatic fire suppression system
- Bronze struts w/bearings
- Dockside water connections & FW spigot
- Engine room fans
- 240v pressure water system
- Automatic 24v shower sump pump
- Main engine/genset fuel filters
- Engine room blowers
- Fuel filter priming pump
- Fuel crossover pump
- Central main drain aft eliminates most side thru hull fittings
- Vacuflush FW toilet system
- Holding tank

---

## Exclusions

---

Owner's personal items including all fishing gear.

---

## Virtual Tours, Video, Photos, Layouts & More at ....

---

<http://dtfyachts.com/project/ocean-yachts-convertible-sportfish-for-sale-lighthouse-point-florida/>

---

## Exclusions

---

Owner's personal belongings.

---

## Disclaimer

---

The Company offers the details of this vessel or yacht in good faith but cannot guarantee or warrant the accuracy of this information nor warrant the condition of the vessel. A buyer should instruct his representatives, agents, or his surveyors, to investigate such details as the buyer desires validated. This vessel or yacht is offered subject to prior sale, price change, or withdrawal without notice.

# PHOTOS

**Aft View**



**Bow View**



**Side View**



**Engine Room**



**Salon I**



**Salon II**



**Salon III**



**Dining Area**



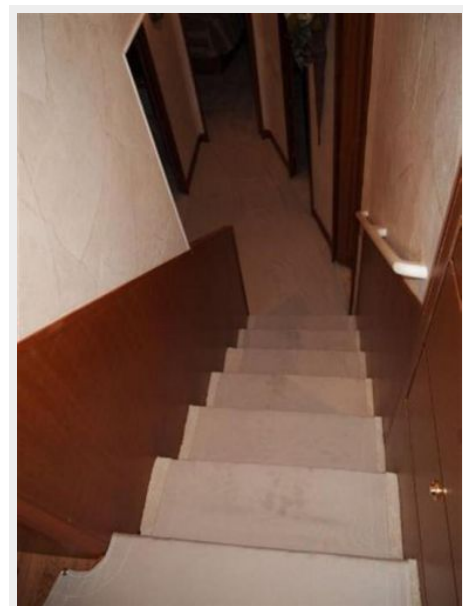
**Galley I**



**Galley II**



**Staircase to Staterooms**



**Custom Galley Flooring**





### Companionway



### Master Stateroom I



### Master Stateroom II



### Master Stateroom III



### Master Stateroom Head



### VIP Stateroom I



### VIP Stateroom II



### VIP Stateroom III



**VIP Head**



**Twin Stateroom I**



**Twin Stateroom Head**



**Twin Stateroom II**





**Crew Quarters / Bunk Stateroom**



**Day Head**



**Laundry Room**



**Interior Stairway to Bridge**



**Helm Seating**



**Helm I**



**Helm II**



**Helm III**



**Enclosed Bridge Door to Mezzanine**



**Enclosed Bridge Settee**



### Enclosed Bridge Wet Bar w/ TV and Refrig



### Enclosed Bridge Wet Bar



### Cockpit



### Cockpit Sunshade

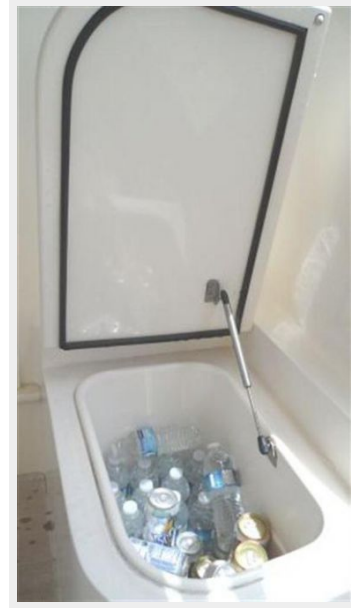




**Cockpit Bait Station with Freezer**



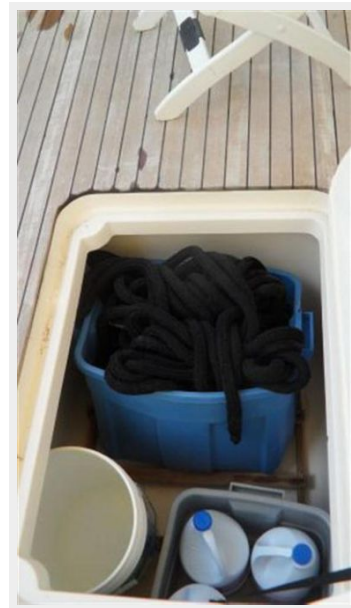
**Cockpit Drink Locker**



**Cockpit Rod Storage**



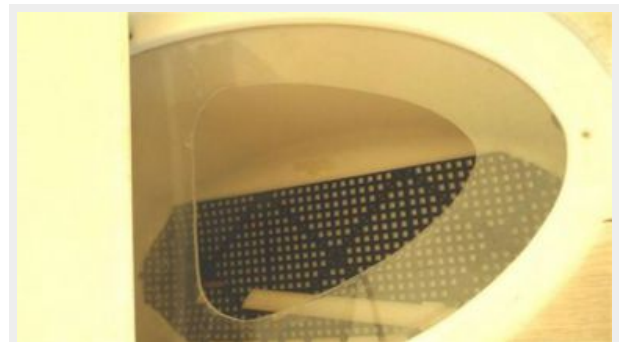
**Fishbox**



**Teak Covering Board**



**Transom Livewell**



**Lazarrette**



**Port Side**



**Starboard Side at Dock**



**Dock View**



**Starboard Side**



# CONTACTS

---

Andrey Shestakov, leading yacht broker of the sales department of Shestakov Yacht Sales Inc. Shestakov Yacht Sales Inc., the official representative of the Miami/Fort Lauderdale FL headquarters.

## Contact details

---

Email: [andrey@shestakovyachtsales.com](mailto:andrey@shestakovyachtsales.com)

Web: [shestakovyachtsales.com/en/](http://shestakovyachtsales.com/en/)

## Telephones

---

USA: +1(954)274-4435

## Office hours

---

Monday – Saturday: **9:00 - 21:00** EDT

Sunday: **closed**

## Address

---



Harbour Towne Marina, 850 NE 3rd St,  
STE 213, Dania, FL 33004