

ONE MORE TIME — OCEAN YACHTS



Судостроитель: [Ocean Yachts](#)

Год постройки: 2001

Модель: Катер для спортивной рыбалки

Цена: ЦЕНА ЯХТЫ ПО ЗАПРОСУ

Местонахождение: United States

Длина общая: 70' 0" (21.34m)

Ширина: 19' 8" (5.99m)

Мин. осадка: 5' 0" (1.52m)

Крейс. скорость: 32 Kts. (37 MPH)

Макс. скорость: 36 Kts. (41 MPH)

Купить **One More Time — Ocean Yachts** а также выбрать подходящую вам яхту из нашего каталога яхт вам поможет опытный яхтенный брокер Андрей Шестаков. На сегодняшний день компания **Shestakov Yacht Sales Inc.** имеет большое количество яхт в собственном списке продаж, а также тесно сотрудничает со всеми крупными яхтенными производителями по всему миру.

Для того чтобы купить яхту **One More Time — Ocean Yachts** а также проконсультироваться по любому вопросу связанному с покупкой, продажей, чартером яхт позвоните по телефону **+7(918)465-66-44**.

ОГЛАВЛЕНИЕ

ОГЛАВЛЕНИЕ	2
ХАРАКТЕРИСТИКИ	5
Основная информация	5
Размеры	5
Скорость, вместимость и масса	5
Размещение	5
Корпус и палуба	5
Информация о двигателе	6
ПОДРОБНОЕ ОПИСАНИЕ	7
Accommodations	7
Galley and Laundry	7
Electronics and Navigation	8
Electrical	8
Deck Equipment	8
Cockpit	9
Flybridge	10
Engine Room and Mechanical	10
Exclusions	10
Virtual Tours, Video, Photos, Layouts & More at	11
Исключения	11
Отказ от ответственности	11
ФОТОГРАФИИ	12
Aft View	12
Bow View	12
Engine Room	12
Side View	12
Salon I	12
Salon II	12

Salon III	13
Dining Area	13
Galley I	13
Galley II	13
Staircase to Staterooms	13
Custom Galley Flooring	13
Companionway	14
Master Stateroom I	14
Master Stateroom II	14
Master Stateroom III	14
Master Stateroom Head	15
VIP Stateroom I	15
VIP Stateroom II	15
VIP Stateroom III	15
VIP Head	16
Twin Stateroom I	16
Twin Stateroom Head	16
Twin Stateroom II	16
Crew Quarters / Bunk Stateroom	17
Day Head	17
Laundry Room	17
Interior Stairway to Bridge	17
Helm Seating	18
Helm I	18
Helm II	18
Helm III	18
Enclosed Bridge Door to Mezzanine	18
Enclosed Bridge Settee	18
Enclosed Bridge Wet Bar w/ TV and Refrig	19

Enclosed Bridge Wet Bar	19
Cockpit Sunshade	19
Cockpit	19
Cockpit Drink Locker	20
Cockpit Bait Station with Freezer	20
Fishbox	20
Cockpit Rod Storage	20
Teak Covering Board	20
Transom Livewell	20
Port Side	21
Lazarette	21
Starboard Side at Dock	21
Dock View	21
Starboard Side	21
КОНТАКТЫ	22
Контактная информация	22
Телефоны	22
Время работы	22
Адрес	22

ХАРАКТЕРИСТИКИ

Основная информация

Тип судна: Катер для спортивной рыбалки

Подкатегория: Convertible

Год постройки: 2001

Модельный год: 2001

Страна: United States

Открытая палуба мостика: Да

Кубрик: Да

Размеры

Длина общая: 70' 0" (21.34m)

Ширина: 19' 8" (5.99m)

Мин. осадка: 5' 0" (1.52m)

Скорость, вместимость и масса

Крейс. скорость: 32 Kts. (37 MPH)

Макс. скорость: 36 Kts. (41 MPH)

Водоизмещение: 112000 Pounds

Вместимость воды: 370 Gallons

Объем топливного бака: 1865 Gallons

Размещение

Всего кают: 4

Всего коек: 6

Всего ком. состава: 4

Корпус и палуба

Материал корпуса: Fiberglass

Материал палубы: Fiberglass

Комплектация корпуса: Modified V-Hull

Информация о двигателе

Двигатели: 2

Производитель: Detroit Diesel

Модель: 16V2000

Тип двигателя: Inboard

Тип топлива: Diesel

ПОДРОБНОЕ ОПИСАНИЕ

Accommodations

Impressive designer interior offers four staterooms with four private heads. The exceptionally large, full-beam master is amidships and boasts a king bed, dressing table, "his & hers" cedar-lined closets and ensuite head.

The large VIP stateroom is forward with queen bed, dressing table and ensuite head. Port and starboard are two additional staterooms. The port stateroom has twin flex berths and ensuite head. The starboard stateroom has upper/lower berths and could be utilized for crew. Aft of this stateroom is a day head. Aft of the port stateroom is a laundry/utility room with side by side washer/dryer and custom clothes hamper. In addition, there is a six foot, hinged countertop and a freezer in the port bulkhead, plus lots of storage and cabinet space.

The salon has been customized with teak paneled bulkheads, hi-gloss teak countertops/cabinetry, upholstered designer chairs/sofas, teak end tables accented with a custom lamp, custom hi-gloss teak hi-lo table with storage and custom carpeting. The starboard teak cabinet houses the entertainment center with Bose lifestyle stereo system, pop-up color TV, wine chiller and wet bar with icemaker.

Window treatments have custom silhouette blinds and valance panels with tinted salon windows for privacy and added coolness. Forward of the salon bulkhead to port is the interior staircase leading to the enclosed command bridge.

Going forward of the salon and up one step to starboard is a large L-shaped dinette with hi-gloss teak table that slides out to make more room as well as two designer dining chairs. Across from the dining table to port is the large, well-appointed galley, featuring Corian countertops, Corian backsplash and spacious teak cabinets/storage drawers. The galley has a full range of stainless appliances, including Sub-zero under-counter refrigerators, Ceran range with oven and Whirlpool convection microwave.

Galley and Laundry

- Ceran 220V, 4 burner range w/oven
- S/S sink
- Sub-zero under-counter refrigerators w/1 120V freezer
- Whirlpool Microwave w/convection oven

- Whirlpool trash compacter
- Whirlpool dishwasher
- Instant hot water
- Central vacuum system
- Water tank level gauge
- Large Pantry
- Lots of counter space
- Laundry: Washer/Dryer; Clothes hamper; Storage

Electronics and Navigation

- Northstar 961 XD w/10" screen, GPS Plotter
- Northstar 951X GPS Plotter w/961x, upgraded 2010
- (2) icom m-127 vhf radios - new 2011
- Standard Horizon VHF radio in salon
- Furuno FR 7112, 72 mi Radar
- Furuno FCV-1200L color Fishfinder
- DDEC single lever electronic controls w/engine synch & trolling valves
- Raytheon ST60 digital depth/speed/sea temp
- Danforth flush mount Compass
- Vetus 24V Bow Thruster
- Robertson AP 20 Autopilot
- KVH g4 Tracvision SAT TV
- Sony DSS receivers
- Blaupunkt AM/FM/CD
- Panasonic KX-TA624 multi-line phone system w/intercom

Electrical

- 240v/50a Shore Power w/auto cord reel/port & stbd 80' cords & T/ISO boost transformers
- 120v Duplex electrical outlets
- 24v & 110v engine room lights
- Voltmeters & battery condition indicator
- Zoned Chilled Water Air Conditioning System w/2 chillers
- Westerbeke FWC 32kw Genset in sound shield
- Heavy duty batteries w/automatic battery chargers & parallel system
- Dyna Plate Ground System
- Underwater Lights @ transom

Deck Equipment

- Anchor/ Anchor Line
- Automatic Bilge Pumps
- High Water Bilge Alarm
- Engine Alarm System
- (5) Interconnected deluxe fire/smoke detectors
- 2 cluster air horns
- Outriggers
- Quick-action ball-type seacocks on all thru-hull fittings below water line
- Hydraulic power steering
- Aluminum bow/hand rails
- Aluminum bridge rail w/ladder
- White hand rails, side, port & stbd
- Forward deck hatch
- (12) S/S cleats - (2) stern; (2) bow; (4) spring
- (2) hawse pipes
- Fire extinguishers
- Bonding throughout

Cockpit

- 156 square cockpit dimension
- Flybridge ladder to enclosed bridge w/acrylic covering system for opening
- Tinted aft salon window & door
- Lazarette access
- Teak covering boards
- Teak cockpit sole w/perimeter frame
- Cockpit sunshade
- (2) Boarding steps
- Transom gate & hinged stern door
- (4) Rod holders
- Tackle locker
- Cockpit (side) lockers
- Refrigerated fish box w/pump
- Bait center w/freezer
- Live baitwell (transom)
- Sink w/FW spigot & bait cutting boards
- FW/SW washdowns
- Lights in overhang
- (New) canvas rear bridge window sunshades
- Canvas transom sunshade

Flybridge

- Fully encl FBG bridge w/entry door and interior/exterior access
- Forward helm station w/full instrumentation
- Windshield Wipers
- (2) Lewmar hatches in hardtop
- JVC color TV/DVD combo
- Outside steering station w/electronic controls
- Adj Stidd helm chair
- Double-wide Stidd companion seat on storage box
- Upgraded carpeting/upholstered valances
- Custom over-sized aft-facing seat w/storage holding 6-8 man life raft
- Lounge seating w/table
- Large wet bar w/u-line refrg/icemaker/storage & corian countertops
- Perma Pub liquor dispenser
- Spreader Lights

Engine Room and Mechanical

- Awlgrip white engine room
- Hot water heater
- Electric oil change system (engines, transmissions, genset)
- Full sound/heat insulation in engine room
- Fireboy automatic fire suppression system
- Bronze struts w/bearings
- Dockside water connections & FW spigot
- Engine room fans
- 240v pressure water system
- Automatic 24v shower sump pump
- Main engine/genset fuel filters
- Engine room blowers
- Fuel filter priming pump
- Fuel crossover pump
- Central main drain aft eliminates most side thru hull fittings
- Vacuflush FW toilet system
- Holding tank

Exclusions

Owner's personal items including all fishing gear.

Virtual Tours, Video, Photos, Layouts & More at

<http://dtfyachts.com/project/ocean-yachts-convertible-sportfish-for-sale-lighthouse-point-florida/>

Исключения

При продаже яхты исключаются личные вещи владельца.

Отказ от ответственности

Компания предоставляет описание судна или яхты добросовестно, но не может гарантировать точность этой информации, а также не ручается за техническое состояние. Покупатель должен проинструктировать своих агентов или оценщиков исследовать представленную информацию более подробно, по собственному желанию. Продажа судна или яхты, изменение цены или снятие с продажи будет происходить без предварительного уведомления.

ФОТОГРАФИИ

Aft View



Bow View



Side View



Engine Room



Salon I



Salon II



Salon III



Dining Area



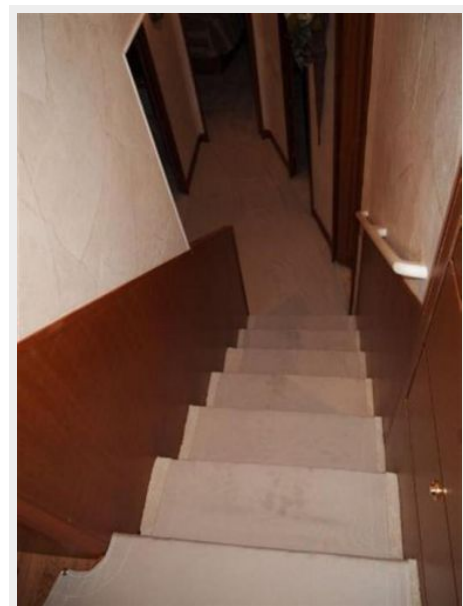
Galley I



Galley II



Staircase to Staterooms



Custom Galley Flooring



Companionway



Master Stateroom I



Master Stateroom II



Master Stateroom III



Master Stateroom Head



VIP Stateroom I



VIP Stateroom II



VIP Stateroom III



VIP Head



Twin Stateroom I



Twin Stateroom Head



Twin Stateroom II



Crew Quarters / Bunk Stateroom



Day Head



Laundry Room



Interior Stairway to Bridge



Helm Seating



Helm I



Helm II



Helm III



Enclosed Bridge Door to Mezzanine



Enclosed Bridge Settee



Enclosed Bridge Wet Bar w/ TV and Refrig



Enclosed Bridge Wet Bar



Cockpit



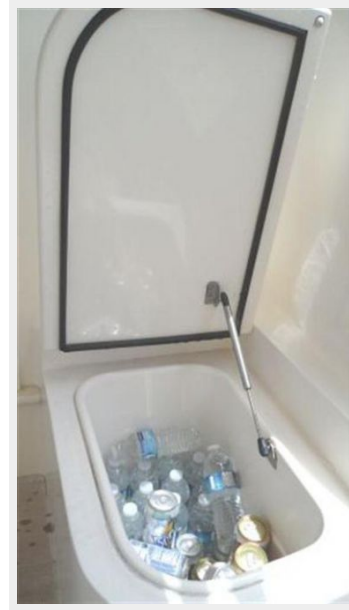
Cockpit Sunshade



Cockpit Bait Station with Freezer



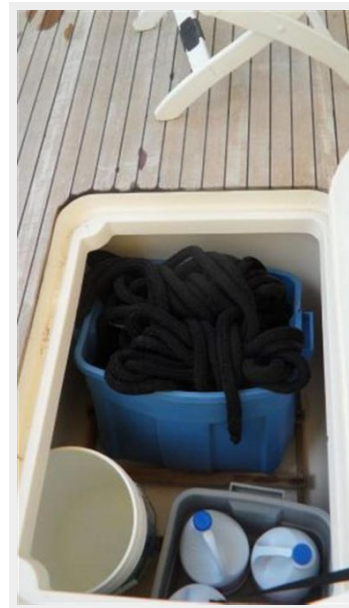
Cockpit Drink Locker



Cockpit Rod Storage



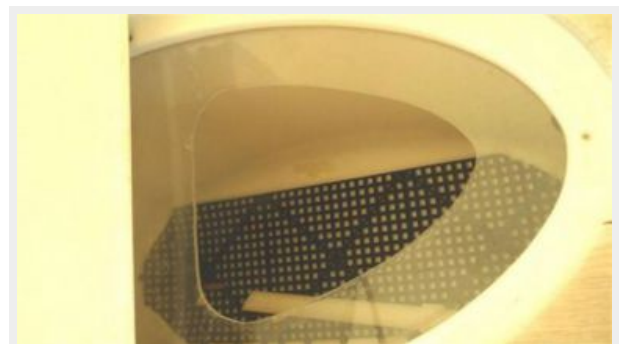
Fishbox



Teak Covering Board



Transom Livewell



Lazarrette



Port Side



Starboard Side at Dock



Dock View



Starboard Side



КОНТАКТЫ

Андрей Шестаков (Andrey Shestakov) – ведущий яхтенный брокер отдела продаж яхт и судов компании Shestakov Yacht Sales Inc. Официальный представитель Shestakov Yacht Sales Inc. для русскоговорящих клиентов в центральном офисе компании в Майами/Форт Лодердейл/Флорида/США.

Контактная информация

Email: andrey@shestakovyachtsales.com

Web: shestakovyachtsales.com

Телефоны

Краснодарский край: **+7(918)465-66-44**

США, Майами, Флорида: **+1(954)274-4435**

Время работы

Понедельник – Суббота: **9:00 - 21:00**
EDT

Воскресенье: **Закрито**

Адрес



Harbour Towne Marina, 850 NE 3rd St,
STE 213, Dania, FL 33004