

HAPPY AT LAST III — POST



Builder: POST

Year Built: 1997

Model: Sport Fisherman

Price: PRICE ON APPLICATION

Location: United States

LOA: 50' 0" (15.24m)

Beam: 16' 11" (5.16m)

Min Draft: 4' 6" (1.37m)

Cruise Speed: 26 Kts. (30 MPH)

Max Speed: 33 Kts. (38 MPH)

Our experienced yacht broker, Andrey Shestakov, will help you choose and buy a yacht that best suits your needs **HAPPY AT LAST III — POST** from our catalogue. Presently, at Shestakov Yacht Sales Inc., we have a wide variety of yachts available on our sale's list. We also work in close contact with all the big yacht manufacturers from all over the world.

If you would like to buy a yacht **HAPPY AT LAST III — POST** or would like help answering any questions concerning purchasing, selling or chartering a yacht, please call **+1(954)274-4435**

TABLE OF CONTENTS

TABLE OF CONTENTS	2
SPECIFICATIONS	6
Overview	6
Basic Information	6
Dimensions	6
Speed, Capacities and Weight	6
Accommodations	6
Hull and Deck Information	7
Engine Information	7
DETAILED INFORMATION	8
Updates	8
Fly Bridge	8
Deck Equipment	8
Tender	8
Salon	8
Galley	9
Master Stateroom	9
Guest Stateroom	9
VIP Stateroom Forward	9
Engine / Mechanical	9
Additional Information	9
Exclusions	9
Disclaimer	10
PHOTOS	11
Bow View	11
Port View	11
Aft View	11
Cockpit	11

Cockpit	12
Cockpit Entry to Engine Room	12
Cockpit / Controls	12
Cockpit Freezer	12
Cockpit Storage	12
Cockpit Storage	12
Cockpit Storage	13
Cockpit	13
Forward Deck	13
Forward Deck Equipment	13
Forward Deck Tender	13
Forward Deck Tender	13
Forward Deck	14
1997 12' Novurania With 40hp Yamaha	14
Novurania	14
Novurania	14
Novurania	14
40hp Yamaha	14
Flybridge	15
Flybridge Covers	15
Flybridge Seating	15
Flybridge Seating	15
Flybridge Electronics	15
Flybridge Electronics	15
Flybridge Electronics	16
Flybridge Electronics	16
Flybridge Forward Seating	16
Salon	16
Salon	16

Salon	16
Salon	17
Salon / Galley	17
Galley	17
Salon Circuit Board	17
Companionway	17
Master Stateroom	17
Master Head	18
Guest Stateroom	18
Guest Head	18
Guest Head	18
Guest Stateroom	19
Guest Stateroom	19
Engine Room	19
Engine Room	19
Engine Room	19
Engine Room	19
Engine Room	20
Engine Room	20
Engine Room	20
Engine Room	20
Engine Room	20
Engine Room	20
Engine Room	20
Engine Room	20
Engine Room	21
Engine Room	21
Engine Room	21
Engine Room	21
Engine Room	21
Engine Room	21
Engine Room	21

CONTACTS	22
Contact details	22
Telephones	22
Office hours	22
Address	22

SPECIFICATIONS

Overview

MAJOR PRICE REDUCTION!! MOTIVATED SELLER!!

Basic Information

Category: Sport Fisherman

Sub Category: Sport Fisherman

Model Year: 1997

Year Built: 1997

Country: United States

Vessel Top: 2363

Fly Bridge: Yes

Cockpit: Yes

Dimensions

LOA: 50' 0" (15.24m)

Beam: 16' 11" (5.16m)

Min Draft: 4' 6" (1.37m)

Speed, Capacities and Weight

Cruise Speed: 26 Kts. (30 MPH)

Max Speed: 33 Kts. (38 MPH)

Displacement: 57122 Pounds

Water Capacity: 240 Gallons

Holding Tank: 42 Gallons

Fuel Capacity: 870 Gallons

Accommodations

Total Cabins: 3

Total Berths: 5

Sleeps: 6

Total Heads: 2

Hull and Deck Information

Hull Material: Fiberglass

Engine Information

Engines: 2

Manufacturer: MAN

Model: V-10

Engine Type: Inboard

Fuel Type: Diesel

DETAILED INFORMATION

Updates

May 2014 - New HD Receiver for Sat TV June 2014 - All New Batteries July 2014 - Both main engines and Generator oil change July 2014 - Both ZF gears oil and filter change July 2014 - Both main engines primary and secondary fuel filters change July 2014 - Generator primary and secondary fuel filters change July 2014 - Hynautic Control System Manifold Reconditioned and fluid change

Fly Bridge

Fiberglass Factory Hardtop Pompanette helm chairs with covers Custom Stamoid console cover 4 Sided enclosure Hynautic controls Simrad AP-11 Auto Pilot Furuno FCV-582 Color Sounder Furuno Radar Datamarine Depth & Trip Log ICOM IC-M126DSL VHF Radio Ritchie Compass Glendinning Synchronizers Bennett Trim Tabs Emergency Shut-Offs 6 Place Rocket Launcher

Deck Equipment

DECK Simpson Lawrence Spring 1500 Windlass Marquipt Davit Custom welded aluminum fender racks (2)

COCKPIT

Hynautic controls portside Spreader Lights In-Deck Livewell Cockpit Freezer Transom Door with Gate RUPP Triple Spreader Outriggers Custom Stamoid cockpit shade Rod Holders (5) Cable Master shore power cord Shore water connection Saltwater washdown Freshwater washdown

Tender

1997 12' Novurania with 1997 40 hp Yamaha outboard

Salon

Large L-Shaped Ultra-leather sofa sleeper (portside) Large L-Shaped Ultra-leather dinette w/storage (starboard) Ultra-leather recliner 5 place Lee rod rack (overhead) Trac Vision II Satellite TV

Galley

RCA Fullsize refrigerator/freezer Sharp Carousel Microwave/Convection Oven Ceran 2-Burner cooktop

Master Stateroom

Starboard berth with storage Cedar lined hanging locker 13" RCA TV/VCR Combo Unit SMX 11 A/C control

Raritan Head Teak & Holly floor in head Medicine Cabinet Separate Shower Stall Holding tank monitor

Guest Stateroom

Over/Under Bunks Cedar lined hanging locker Bomar overhead hatch w/ sunshade SMX 11 A/C control

VIP Stateroom Forward

Criss Cross Bunks Private access to head

Engine / Mechanical

MAN V-10 Engines Westerbeke 15kW 15.0 BTDB Generator with 1788 hours (New armature 2009) Pro Mariner 80A Battery charger Auto Halon System Patton Air Circulation fans (2) Reverse oil change system Heart Interface Model 25 Inverter AC/DC engine room lights Spare props

Additional Information

NEW bottom paint (10/2011) - Soda blasted then epoxy barrier coated Spare parts

EPIRBS (2)

Exclusions

Owner's personal belongings.

Disclaimer

The Company offers the details of this vessel or yacht in good faith but cannot guarantee or warrant the accuracy of this information nor warrant the condition of the vessel. A buyer should instruct his representatives, agents, or his surveyors, to investigate such details as the buyer desires validated. This vessel or yacht is offered subject to prior sale, price change, or withdrawal without notice.

PHOTOS

Bow View



Port View



Aft View



Cockpit



Cockpit



Cockpit Entry to Engine Room



Cockpit / Controls



Cockpit Freezer



Cockpit Storage



Cockpit Storage



Cockpit Storage



Cockpit



Forward Deck



Forward Deck Equipment



Forward Deck Tender



Forward Deck Tender



Forward Deck



1997 12' Novurania With 40hp Yamaha



Novurania



Novurania



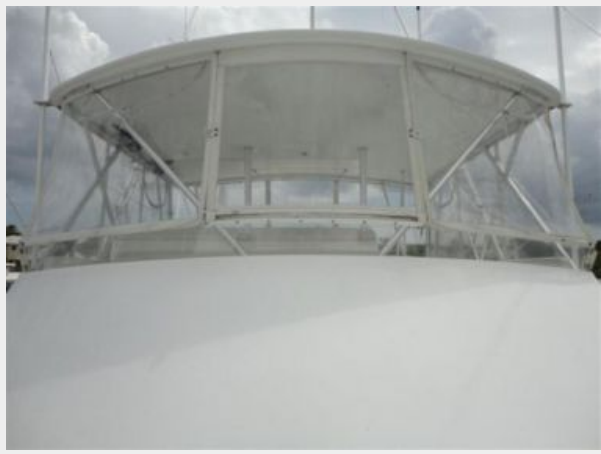
Novurania



40hp Yamaha



Flybridge



Flybridge Covers



Flybridge Seating



Flybridge Seating



Flybridge Electronics



Flybridge Electronics



Flybridge Electronics



Flybridge Electronics



Flybridge Forward Seating



Salon



Salon



Salon



Salon



Salon / Galley



Galley



Salon Circuit Board



Companionway



Master Stateroom



Master Head



Guest Stateroom



Guest Head



Guest Head



Guest Stateroom



Guest Stateroom



Engine Room



Engine Room



Engine Room



Engine Room



Engine Room



Engine Room



Engine Room



Engine Room



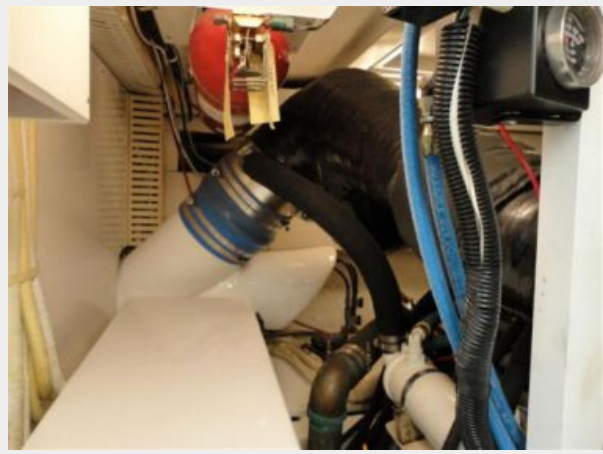
Engine Room



Engine Room



Engine Room



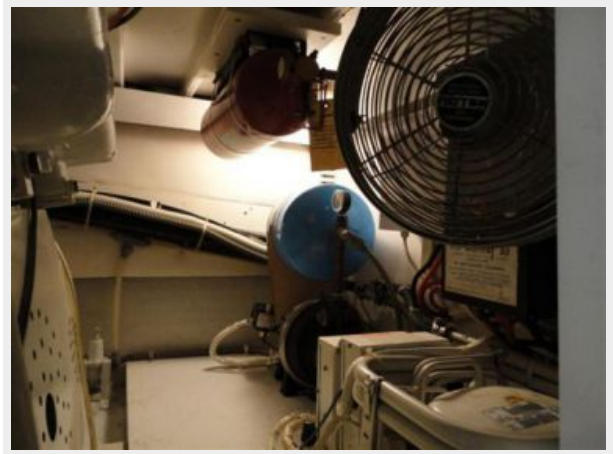
Engine Room



Engine Room



Engine Room



Engine Room



Engine Room



CONTACTS

Andrey Shestakov, leading yacht broker of the sales department of Shestakov Yacht Sales Inc. Shestakov Yacht Sales Inc., the official representative of the Miami/Fort Lauderdale FL headquarters.

Contact details

Email: andrey@shestakovyachtsales.com

Web: shestakovyachtsales.com/en/

Telephones

USA: +1(954)274-4435

Office hours

Monday – Saturday: **9:00 - 21:00** EDT

Sunday: **closed**

Address



Harbour Towne Marina, 850 NE 3rd St,
STE 213, Dania, FL 33004