

## VELOCE — LEOPARD



**Builder:** LEOPARD

**Year Built:** 2007

**Model:** Motor Yacht

**Price:** PRICE ON APPLICATION

**Location:** United States

**LOA:** 100' 1" (30.50m)

**Beam:** 23' 0" (7.00m)

**Max Draft:** 4' 0" (1.20m)

**Cruise Speed:** 34 Kts. (39 MPH)

**Max Speed:** 38 Kts. (44 MPH)

Our experienced yacht broker, Andrey Shestakov, will help you choose and buy a yacht that best suits your needs **VELOCE — LEOPARD** from our catalogue. Presently, at Shestakov Yacht Sales Inc., we have a wide variety of yachts available on our sale's list. We also work in close contact with all the big yacht manufacturers from all over the world.

If you would like to buy a yacht **VELOCE — LEOPARD** or would like help answering any questions concerning purchasing, selling or chartering a yacht, please call **+1(954)274-4435**

---

# TABLE OF CONTENTS

---

TABLE OF CONTENTS	2
SPECIFICATIONS	4
Basic Information	4
Dimensions	4
Speed, Capacities and Weight	4
Accommodations	4
Hull and Deck Information	4
Engine Information	5
DETAILED INFORMATION	6
DISCLAIMER	6
MACHINERY	6
COMMUNICATION	6
NAVIGATION	6
ENTERTAINMENT	6
GALLEY & LAUNDRY EQUIPMENT	6
TENDER & TOYS	7
DECK EQUIPMENT	7
SECURITY	7
FIRE FIGHTING EQUIPMENT	7
SAFETY EQUIPMENT	7
Exclusions	7
Disclaimer	8
PHOTOS	9
CONTACTS	16
Contact details	16
Telephones	16
Office hours	16
Address	16

---



---

# SPECIFICATIONS

---

## Basic Information

---

**Category:** Motor Yacht

**Sub Category:** Jet Boat

**Model Year:** 2007

**Year Built:** 2007

**Country:** United States

**Cockpit:** Yes

## Dimensions

---

**LOA:** 100' 1" (30.50m)

**Beam:** 23' 0" (7.00m)

**Max Draft:** 4' 0" (1.20m)

## Speed, Capacities and Weight

---

**Cruise Speed:** 34 Kts. (39 MPH)

**Cruise Speed Range:** 400

**Max Speed:** 38 Kts. (44 MPH)

**Gross Tonnage:** 149 Pounds

**Water Capacity:** 396.258078 Gallons

**Fuel Capacity:** 2641.72052 Gallons

## Accommodations

---

**Total Cabins:** 4

**Total Berths:** 7

**Sleeps:** 9

**Crew Cabin:** 3

**Crew Berths:** 6

**Crew Sleeps:** 6

## Hull and Deck Information

---

**Hull Material:** GRP

**Deck Material:** Teak

**Exterior Designer:** Andrea Bacigalupo

**Interior Designer:** Andrea Bacigalupo

---

## Engine Information

---

**Engines:** 3

**Manufacturer:** MTU

**Model:** 12V 2000 M93

**Engine Type:** Inboard

**Fuel Type:** Diesel

---

## DETAILED INFORMATION

---

### DISCLAIMER

---

**\*\* Not for sale to U.S. residents whilst in U.S. waters \*\***

### MACHINERY

---

Main Engines Engine Type: (3) MTU 12V 2000 M93, @ 2,000 Hp each Hours: 1,300 approx. per engine, December 2012 Gearboxes for Main Engines: 3 x ZF 3050; Ratio: 2,773:1 Drive: 2 x KaMeWa Waterjet 63S II and 1 x KaMeWa Booster 50BII Generators & Electricity Output: 380 Volts; Phase 3; 50 Hz Generators: 2 x Kohler 33EFOZ 380V/50Hz, 32kW auxiliary diesel generator sets Generator Fuel Consumption: 100 Gallons/day (400 liters/day) Shore Power: 1 x 380V/50Hz connection Switchboard: 380V/50Hz, 230V/50Hz and 24V DC panels Batteries (5 x 24V): Engines: Virta Promotive Silver Generators: Optima General Service: Trojan TE35 Emergency: Optima Battery Chargers: 3 x Dolphin 24V/130A and 1 x Dolphin 12V/15A battery chargers Air Conditioning Type: Frigomar; 150 BTU/hr Other Machinery Watermakers: Idromar 230 Liter/hr Bow Thruster: Electric Bow Thruster 35Kw Steering System: KaMeWa 63 S II Fuel Separator & Filtration: Racor Filter Sewage System: Hamann Systems Super Mini Fresh Water System: (2) G&R Ecojet 220 Volts & 24 Volts Backup Emergency Steering: KaMeWa

### COMMUNICATION

---

1 x Simrad RS82 VHF radio with DSC 2 x Icom portable waterproof GMDSS VHF radios 1 x Simrad AIS 1 x Nera Fleet 33 satellite telecommunication system 1 x CCTV system

### NAVIGATION

---

1 x Simrad GB60 navigation station with two LCD screens, radar, speed log, NAVTEX and chart plotter 1 x Simrad GP31 GPS receiver 1 x Simrad AP50 auto pilot 1 x Simrad gyrocompass 1 x Ritchie magnetic compass 1 x Simrad IS15 wind speed and direction indicator

### ENTERTAINMENT

---

Video Equipment TV's: (1) 46" Sony LCD (3) 40" Sony LCD (2) 15" Sony LCD DVD's: (8) Denon Amplifier Audio Equipment Stereo's: Denon CD player: Denon I-Pod Stations: (6) Denon Stations Other Denon/ Pronto Denon/ Pronto

### GALLEY & LAUNDRY EQUIPMENT

---

Main Galley Equipment Cooking Equipment Oven: Miele Grill: Miele Microwave: Miele Refrigeration/Freezer: Refrigerator: Frigic Ice Maker: Frigomar Dishwasher: Miele Laundry Equipment Main Laundry Equipment: Miele Washer & Dryer

---

## TENDER & TOYS

---

Tenders: 13' Williams 385 Jet 95 Hp Jet Ski: Yamaha GP 1300 (2) Wakeboard (2) Water Ski's

---

## DECK EQUIPMENT

---

Anchor Windlass System: Sanguinetti Aft Warping Capstans: (2) 4000 Inox Anchors: (2) SEC Anchor Chain: 16 mm Boat Crane and Davits: Sanguinetti 40 kg Ladder: Sanguinetti Hydraulic Stern Boarding Gangway: Sanguinetti Hydraulic

---

## SECURITY

---

CCTV System: Yes Cameras: 3 (Engine Room, Aft Deck, Main Salon) Monitors: 3 (Galley, Flybridge, Captain Cabin)

---

## FIRE FIGHTING EQUIPMENT

---

1 x Fire main system including the hydrants, hoses and nozzles 1 x Giannechi ACM501BT/K3 380V/50Hz 390 1/min bilge/fire pump 1 x Giannechi ACM401BT 24V DC 225 1/min auxiliary bilge/fire pump 1 x Engine room CO<sup>2</sup> fire extinguishing system 1 x Centralized fire detection system 1 x Petrol fume detector located in garage 10 x 2kg dry powder, 3 x 5kg CO<sup>2</sup>, 1 x 18kg CO<sup>2</sup> and 1 x 91 foam portable fire extinguishers 1 x Fire blanket located in the galley 2 x Fireman outfits 2 x EEBD

---

## SAFETY EQUIPMENT

---

2 x Zodiac AMEC12 12 person life rafts with hydrostatic release units 4 x Lifebuoys with lights including 2 x lifebuoys with buoyant lines and 2 x lifebuoys with emergency markers 1 x Sailor SART radar transponder 4 x Pains Wessex line throwing devices 1 x Set of pyrotechnics including 6 x parachute rockets, 4 x hand flares and 3 x smoke signals 12 x Adult lifejackets with lights 2 x Children lifejackets with lights 14 x Immersion suits 1 x First aid kit

---

## Exclusions

---

Owner's personal belongings.

---

## Disclaimer

---

The Company offers the details of this vessel or yacht in good faith but cannot guarantee or warrant the accuracy of this information nor warrant the condition of the vessel. A buyer should instruct his representatives, agents, or his surveyors, to investigate such details as the buyer desires validated. This vessel or yacht is offered subject to prior sale, price change, or withdrawal without notice.



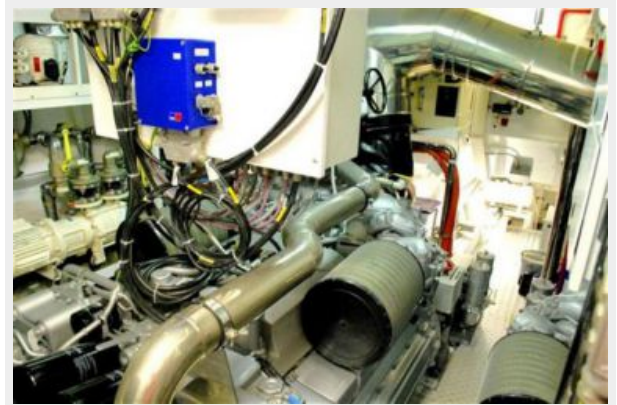
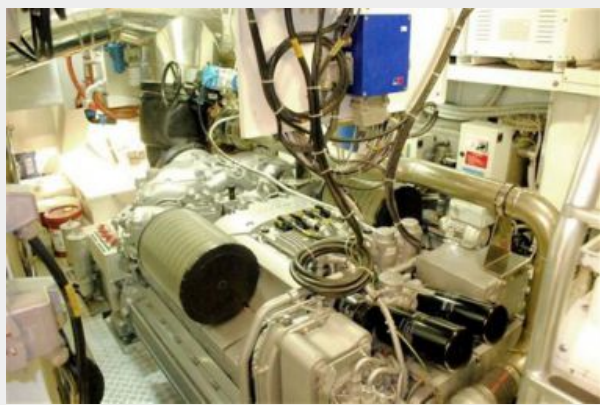
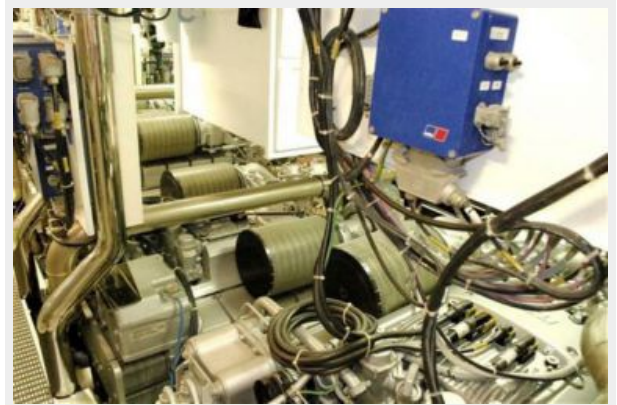
# PHOTOS



















---

# CONTACTS

---

Andrey Shestakov, leading yacht broker of the sales department of Shestakov Yacht Sales Inc. Shestakov Yacht Sales Inc., the official representative of the Miami/Fort Lauderdale FL headquarters.

---

## Contact details

---

Email: **andrey@shestakovyachtsales.com**

Web: [shestakovyachtsales.com/en/](http://shestakovyachtsales.com/en/)

---

## Telephones

---

USA: +1(954)274-4435

---

## Office hours

---

Monday – Saturday: **9:00 - 21:00** EDT

Sunday: **closed**

---

## Address

---



Harbour Towne Marina, 850 NE 3rd St,  
STE 213, Dania, FL 33004