

NORTHSTAR — AZIMUT



Судостроитель: [AZIMUT](#)

Год постройки: 2006

Модель: Моторная яхта

Цена: **ЦЕНА ЯХТЫ ПО ЗАПРОСУ**

Местонахождение: United States

Длина общая: 50' 0" (15.24m)

Ширина: 14' 11" (4.55m)

Мин. осадка: 4' 0" (1.22m)

Крейс. скорость: 27 Kts. (31 MPH)

Макс. скорость: 31 Kts. (36 MPH)

Купить **NORTHSTAR — AZIMUT** а также выбрать подходящую вам яхту из нашего каталога яхт вам поможет опытный яхтенный брокер Андрей Шестаков. На сегодняшний день компания **Shestakov Yacht Sales Inc.** имеет большое количество яхт в собственном списке продаж, а также тесно сотрудничает со всеми крупными яхтенными производителями по всему миру.

Для того чтобы купить яхту **NORTHSTAR — AZIMUT** а также проконсультироваться по любому вопросу связанному с покупкой, продажей, чартером яхт позвоните по телефону **+7(918)465-66-44**.

ОГЛАВЛЕНИЕ

ОГЛАВЛЕНИЕ	2
ХАРАКТЕРИСТИКИ	3
Обзор	3
Основная информация	3
Размеры	3
Скорость, вместимость и масса	4
Размещение	4
Корпус и палуба	4
Информация о двигателе	4
ПОДРОБНОЕ ОПИСАНИЕ	5
Accommodations	5
Исключения	9
Отказ от ответственности	9
ФОТОГРАФИИ	10
КОНТАКТЫ	13
Контактная информация	13
Телефоны	13
Время работы	13
Адрес	13

ХАРАКТЕРИСТИКИ

Обзор

BEST VALUE and Priced to Sell! Extended Caterpillar Platinum Advantage Warranty through August 2015.

Engines & Generator recently serviced including fluids, filters, impellers..... READY TO CRUISE! Upon boarding the Azimut 50, you would swear you were on a much larger yacht, the salon is extremely spacious, light and airy with great visibility out the salon windows. This preferred two stateroom model offers the larger open galley where you can actually cook a meal, the optional pull out sofa sleeper and fitted crew qtrs allows overnight accommodations for up to seven owners and guests! The wide side decks, hydraulic boarding ladder (passerelle), and Marquipt boarding ladder/stair system makes it very easy and safe for your friends and family to board and navigate around the boat. The boat is very easy to operate and is perfect for a owner/operator couple to be comfortable taking a long range trip, or just a simple evening dinner cruise. The extended Caterpillar warranties to August 2015 will give the next owner piece of mind. This is a very extensive process where Caterpillar examines and tests all aspects of the engines to ensure they meet the criteria before offering this warranty. The bottom was recently serviced and this boat is turn key and ready to take you to your destination. Upgraded Garmin Touch Screen Electronics and much more!

Основная информация

Тип судна: Моторная яхта

Модельный год: 2006

Год постройки: 2006

Страна: United States

Открытая палуба мостика: Да

Кубрик: Да

Размеры

Длина общая: 50' 0" (15.24m)

Ширина: 14' 11" (4.55m)

Мин. осадка: 4' 0" (1.22m)

Скорость, вместимость и масса

Крейс. скорость: 27 Kts. (31 MPH)

Макс. скорость: 31 Kts. (36 MPH)

Водоизмещение: 46000 Pounds

Вместимость воды: 132 Gallons

Объем топливного бака: 586 Gallons

Размещение

Всего кают: 2

Всего коек: 2

Спальные места: 6

Всего ком. состава: 2

Каюты экипажа: 1

Койки экипажа: 1

Спальных мест экипажа: 1

Комм. состав экипажа: 1

Корпус и палуба

Материал корпуса: Fiberglass

Информация о двигателе

Двигатели: 2

Производитель: Caterpillar

Модель: C-12

Тип двигателя: Inboard

ПОДРОБНОЕ ОПИСАНИЕ

Accommodations

Accommodations & Walkthrough Sleeps 6 owners and guests in two staterooms, plus pull out sleeper sofa, and one additional in fitted out crew qtrs aft for total of 7. Stepping on board, you find yourself on the aft teak deck. Here there is access to crew's quarters, lazarette for storage, the molded stairs to the flybridge and a sliding stainless steel framed glass door to the main salon. Entering the main salon, to port there is an end table with four drawers that hold your dinnerware and glasses, then a sofa that becomes a bed when needed. To starboard there is another sofa, a cherry top table and 2 chairs. Forward and to starboard, up a couple of steps is the helm and navigation station with a terrific 360-degree view for the helmsman. To port and forward, go down a few steps to the beautifully appointed galley, which leads to the hallway going forward to the staterooms. The fwd stateroom is on the centerline forward with its own head and circular shower. The mid ship stateroom has a double berth and its own head and shower. The entire interior is done in beautiful high gloss cherry finish.

Key Features

- CAT C-12 w/685 hrs (April 30, 2012)
- **Extended CAT Warranty to June 2013**
- 15.5 Kw Gen 411 hrs (April 30th, 2012)
- Sat TV w/3 receivers
- Passerelle (Hydraulic Gangway/Crane)
- Fitted out Crew Qtrs. with A/C
- Garmin Color Touch GPS (2)
- Electro Guard 705B Permanent Cathodic Protection Sys.

Salon

- 2 sofas, one is a sofa bed
- 2 armchairs
- End tables
- Adjustable height table
- Storage cabinet for tableware, cutlery & glasses
- Ceiling lights
- Carpet and curtains
- Sharp Aquos 26" LCD TV
- Sony Home Theater system

Galley

- Teak cover for galley sinks
- 2 stainless portholes
- 3 burner ceramic cooktop
- Extractor hood
- Microwave/convection oven
- Refrigerator/freezer
- Ample cabinets, shelves and counter space

Master Stateroom

- Double bed with mirrored headboard
- Vanity with mirror and light
- Deck hatch over berth
- Cedar lined closet with shelves
- Carpet and curtains
- Sharp Aquos 17" LCD TV
- Reading lights
- Stainless Porthole
- Television
- Cedar lined drawers
- CD player

Master Head

- Stainless porthole
- Sink with cabinet under
- Circular shower with teak grating
- Mirrored cabinet above sink

Guest Stateroom

- Double bed with mirrored headboard
- Stainless porthole
- Ceiling lights
- Reading lights
- Toshiba 17" LCD TV
- CD Player
- Cedar lined closet
- Carpet and curtains

Guest Head

- Stainless porthole
- Circular shower with teak grating
- Mirrored cabinet with sliding door

- Cabinet under the sink

Lower Helm Electronics and Controls

- Port side forward of main salon
- Bow thruster controls
- Helm seat
- Adjustable steering wheel
- Engine controls and gauges
- VHF radio
- Garmin 5208 Color Touch Screen GPS
- Raytheon RL85C Radar with open array antenna and color monitor
- RayMarine Autopilot
- KVH Trac 4 System with dummy dome and 3 receivers
- Alarms for: bilge pumps, holding tanks, low batteries and engine alarms
- Rudder angle indicator
- Trim tab indicator
- Fuel gauge
- 12v socket
- Compass
- Chart table
- Circuit Breaker Panel

Upper Helm Electronics and Controls

- Engine controls and gauges
- Raymarine autopilot
- Raymarine RL85c radar
- Garmin 5212 Color GPS Touch Screen
- Bow thruster controls
- Windlass controls with chain counter
- Digital Depth Gauge
- VHF radio
- Stereo w/ speakers
- Alarms repeated from main helm
- Rudder angle indicator
- Fuel gauge
- 12-volt socket
- Compass
- Electric horn

Flybridge

- Electric Barbeque

- Seat cushions
- Deluxe Bimini
- Refrigerator
- Wet sink
- Burgee staff
- 6 man Switlik life raft
- Large seating area with table
- Radar arch with overhead lights, stereo speakers, antennas, navigation lights and anchor light.
- Stainless railing with custom storage for Marquipt boarding ladder

Electrical

- Kohler 15.5 KW generator with 411 hours (4-30-12) in a sound shield
- Glendinning 50 Amp Cablemaster with 50 ' cord
- 2 Battery banks 2 banks of 2-8D's each
- 1-12 volt battery for Genset
- Battery chargers for generator and house .
- 220/110 volt and 24/12 volt control panels
- 24 volt lighting
- 220/110 volt 60 Hz system, lights and outlets throughout the vessel
- 1 Impressed current Cathodic Protection System (Electro Guard 705B) Galvanic Isolator, **eliminates Zincs**,
- Cable TV hookups

Mechanical & Engines

- 2 Cat C-12 diesel engines @ 669 hp each, **with extended warranties to June 2013**
- Dual Racor Filters w/ vacuum gauges
- 685 engine hours as of 4-30-12
- Underwater engine exhausts
- Engine room blowers
- Genset exhausts at water level
- Sea-Fire engine room fire suppression system
- Air intake closing device
- Four automatic bilge pumps
- 3 Cruisair Air conditioning units
- Water heater
- 60-gallon black water tank
- 30 gallon gray water tank
- Separate large sea water strainers for each engine and generator
- Splendide combo-matic washer/dryer
- Water Spot...water softener
- Manual bilge pumps

Deck & Hull

- Electro-hydraulic Passerelle
- Sun pads forward
- Stainless steel bow rail
- 24 volt Anchor windlass with plow anchor and 300' +/- of chain
- Chain wash down
- Windshield wipers
- Cockpit bench w/ cushions
- Cockpit access to crew's quarters
- Teak aft deck
- Teak steps on flybridge staircase
- Teak Swim Platform
- Marquipt boarding ladder/stairs
- Todd 3 step box
- Assorted dock lines and fenders
- Engine room access hatch
- Aft deck shower w/ hot/cold pressure water
- Tempered Frameless Windows
- Watertight hatch to flybridge

Disclaimer The Company offers the details of this vessel in good faith but cannot guarantee or warrant the accuracy of this information nor warrant the condition of the vessel. A buyer should instruct his agents, or his surveyors, to investigate such details as the buyer desires validated. This vessel is offered subject to prior sale, price change, or withdrawal without notice.

Исключения

При продаже яхты исключаются личные вещи владельца.

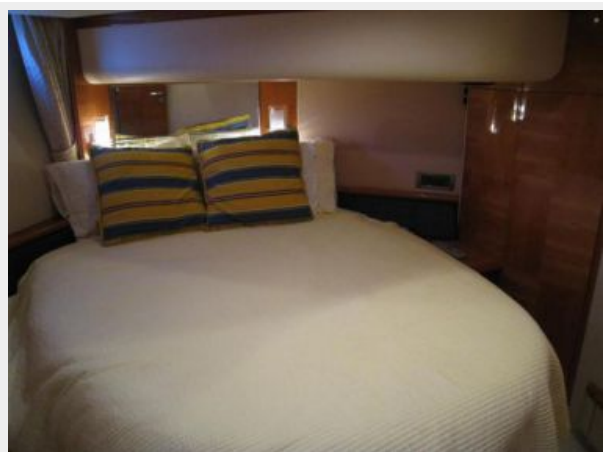
Отказ от ответственности

Компания предоставляет описание судна или яхты добросовестно, но не может гарантировать точность этой информации, а также не ручается за техническое состояние. Покупатель должен проинструктировать своих агентов или оценщиков исследовать представленную информацию более подробно, по собственному желанию. Продажа судна или яхты, изменение цены или снятие с продажи будет происходить без предварительного уведомления.

ФОТОГРАФИИ







КОНТАКТЫ

Андрей Шестаков (Andrey Shestakov) – ведущий яхтенный брокер отдела продаж яхт и судов компании Shestakov Yacht Sales Inc. Официальный представитель Shestakov Yacht Sales Inc. для русскоговорящих клиентов в центральном офисе компании в Майами/Форт Лодердейл/Флорида/США.

Контактная информация

Email: andrey@shestakovyachtsales.com

Web: shestakovyachtsales.com

Телефоны

Краснодарский край: **+7(918)465-66-44**

США, Майами, Флорида: **+1(954)274-4435**

Время работы

Понедельник – Суббота: **9:00 - 21:00**
EDT

Воскресенье: **Закрито**

Адрес



Harbour Towne Marina, 850 NE 3rd St,
STE 213, Dania, FL 33004