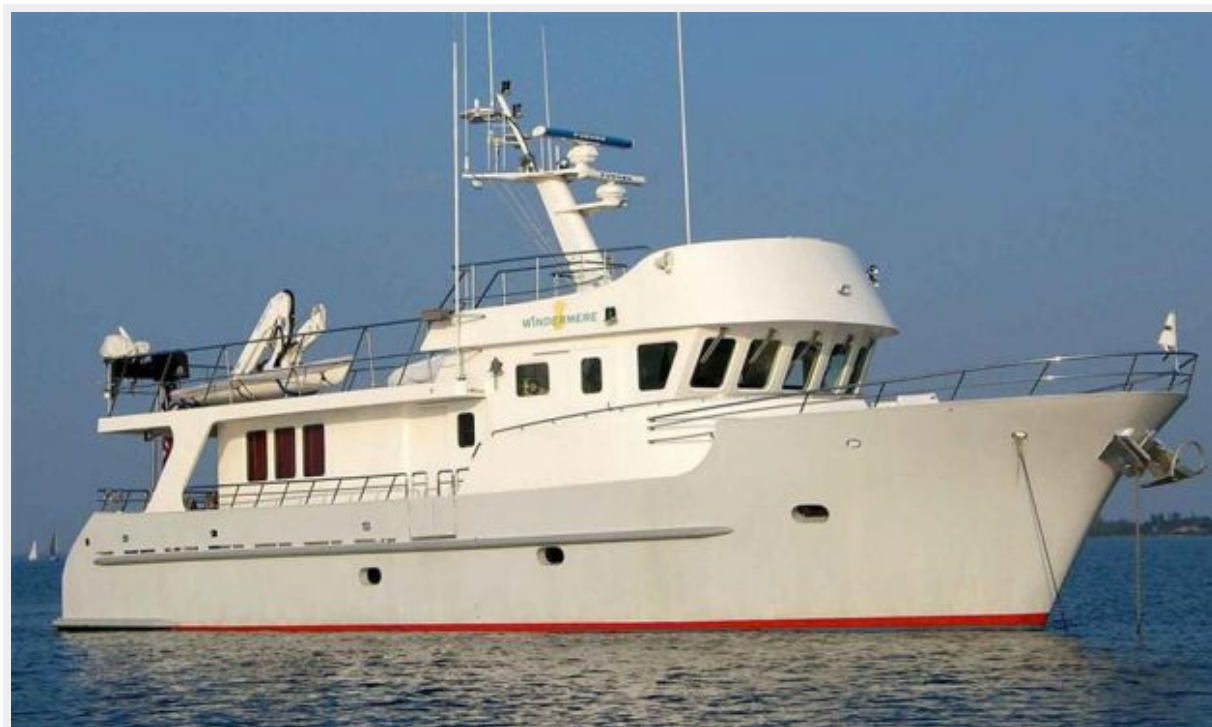


WINDERMERE — CAPE HORN



Судостроитель: CAPE HORN

Год постройки: 2003

Модель: Траулер

Цена: **ЦЕНА ЯХТЫ ПО ЗАПРОСУ**

Местонахождение: United States

Длина общая: 65' 0" (19.81m)

Ширина: 19' 6" (5.94m)

Макс. осадка: 6' 6" (1.98m)

Крейс. скорость: 8 Kts. (9 MPH)

Макс. скорость: 10 Kts. (12 MPH)

Купить **Windermere — CAPE HORN** а также выбрать подходящую вам яхту из нашего каталога яхт вам поможет опытный яхтенный брокер Андрей Шестаков. На сегодняшний день компания **Shestakov Yacht Sales Inc.** имеет большое количество яхт в собственном списке продаж, а также тесно сотрудничает со всеми крупными яхтенными производителями по всему миру.

Для того чтобы купить яхту **Windermere — CAPE HORN** а также проконсультироваться по любому вопросу связанному с покупкой, продажей, чартером яхт позвоните по телефону **+7(918)465-66-44**.

ОГЛАВЛЕНИЕ

ОГЛАВЛЕНИЕ	2
ХАРАКТЕРИСТИКИ	4
Обзор	4
Основная информация	4
Размеры	4
Скорость, вместимость и масса	5
Размещение	5
Корпус и палуба	5
Информация о двигателе	5
ПОДРОБНОЕ ОПИСАНИЕ	6
Remarks	6
Salon	6
Galley/Laundry	6
Refreshment Bar	7
Stairs & Companionway	7
Office	7
Master Stateroom	7
Master Head	8
Guest Stateroom Port	8
VIP Suite, Forward	8
Guest Head	8
Pilothouse	8
Electronics	9
Electrical	11
Utility Room	11
Mechanics	11
Tankage	12
Flybridge	12

Aft Deck	12
Deck Equipment	13
Construction	13
Upgrades	14
Exclusions	14
Исключения	14
Отказ от ответственности	14
ФОТОГРАФИИ	15
КОНТАКТЫ	24
Контактная информация	24
Телефоны	24
Время работы	24
Адрес	24

ХАРАКТЕРИСТИКИ

Обзор

Oct. 2014: The price is now \$995,000 - that is not a typo but a \$400,000 price reduction! The owners want this magnificent expedition yacht sold before making the decision to winterize or to bring to Florida for the winter. July 2014: Fresh paint topsides and bottom. The hull looks spectacular! Mechanical upgrades and thorough inspections have this expedition yacht in ready-to-go (anywhere!) condition. Launched April 2004, The Cape Horn Trawler Corp. built the ultimate CH 65. Built at the A.F. Theriault yard in Nova Scotia under the direct supervision of Peter Sever, Windermere is the culmination of all of the modifications incorporated in the final and best of the Cape Horn Trawlers. Renown megayacht designer Jane Plachter-Vogel drew accommodation plans to best utilize all interior spaces. With a flybridge, Z-drive, active fin stabilizers, bow thruster, and all available options, Windermere adds a level of comfort and luxury deserving of a vessel that promotes "Safety First, First in Safety." Accommodations include 3 staterooms, an office, and two heads. Five watertight exterior doors provide access to the living areas. All cabinetry is Canadian Birdseye maple with rounded corners and finely executed by the Cape Horn furniture team. Opening portlights in all cabins. Dimmer light switches throughout. Soles are ceramic tiles or carpeted. Sound insulation beneath all carpeting.

Основная информация

Тип судна: Траулер

Подкатегория: Водоизмещение

Модельный год: 2003

Год постройки: 2003

Страна: United States

Открытая палуба мостика: Да

Кубрик: Да

Размеры

Длина общая: 65' 0" (19.81m)

Длина по ватерлинии: 60' 0" (18.29m)

Ширина: 19' 6" (5.94m)

Макс. осадка: 6' 6" (1.98m)

Длина привального бруса: 65' 0"
(19.81m)

Скорость, вместимость и масса

Крейс. скорость: 8 Kts. (9 MPH)

Крейсерская скорость поворота: 1200 Kts.

Макс. скорость: 10 Kts. (12 MPH)

Макс. скорость поворота: 1750 Kts.

Водоизмещение: 240000 Pounds

Чистый вес: 120 Pounds

Вместимость воды: 500 Gallons

Вместимость сточного бака: 200 Gallons

Объем топливного бака: 5500 Gallons

Размещение

Всего кают: 3

Всего коек: 3

Спальные места: 6

Всего ком. состава: 2

Корпус и палуба

Материал корпуса: Steel

Материал палубы: Steel

Комплектация корпуса: Full Displacement

Цвет корпуса: gray

Дизайнер корпуса: Marius Lengkeek Engineering

Информация о двигателе

Двигатели: 1

Производитель: Cummins

Модель: N14M

Тип двигателя: Inboard

Тип топлива: Diesel

ПОДРОБНОЕ ОПИСАНИЕ

Remarks

Launched in April 2004, WINDERMERE is the ultimate Cape Horn. Built under the supervision of Peter Sever of the Cape Horn Trawler Corp. and by A.F. Theriault, Windermere is the culmination of all of the Cape Horn modifications including interior layout by renown megayacht designer Jane Plachter-Vogel. This 2nd generation Cape Horn 65 has it all, including azimuthing Z drive, speed nozzle, active fin stabilizers, bow thruster, flybridge, walk-around engine room, full side decks, and loaded with the finest of equipment. Cape Horn trawlers were built to be the safest luxury yachts and have proven themselves to be worthy of their goals in surviving hurricanes, groundings, and even a rollover in the tsunami in Phuket. "First in Safety, Safety First" is the company motto that has been substantiated. The original owners lightly cruised New England from 2004 to March of 2009. The current, second, owners are experienced sailors who have done extensive maintenance and upgrades over the last 3 years and enjoyed cruising from Newfoundland to Bahamas. Unfortunately family health issues have necessitated the sale of their beloved yacht and they have returned to the East Coast to expedite a sale. Winderemere is in excellent condition and offers a unique opportunity for the cruising couple who wants a luxury expedition yacht where safety and redundancies are paramount.

Salon

Entry to the salon is through the watertight door from the aft deck or forward from the starboard side entrance into the galley. The salon features near panoramic windows, natural and halogen lighting, and provides for a feeling of warm ambiance combined with elegance and spaciousness. To starboard is an ergonomically designed 7' couch that seats six. Two cocktail tables allow for everyday convenience and mobility and can be raised for cafe dining. When formal dining is preferred, the 2 cocktail tables serve as pedestals for a large tabletop that is stowed separately and easily attaches in seconds. To port are two swivel recliners; the port cabinet houses the electronics for the 8 zone music distribution center. • Banquette for 6-8 people • Sony 30" flatscreen TV (2009) • Surround sound system, extensive • Sony DVD/CD player • Yamaha stereo amplifier • Storage for 1000 DVDs • Levelor mini-blinds • Roman shades • Wall lamps • Storage cabinets • Beneath seating stowage • Stowable card table w/felt & vinyl covers

Galley/Laundry

Watertight door from starboard side into galley. The salon is separated from the galley by the custom designed island. The two level island serves as casual dining for 3, as well as being set up as a separate work station. Picture window above the sink. The 3 bar stools are on unique slides that also provide flexibility for additional seating in the salon. Generous pantry and drawer stowage including drawers for pots and pans. Sole, walls, and backsplashes are ceramic tile with

custom tile accents. Red lights for night operation. • Sub-Zero refrigerator • (4) Sub-Zero freezer drawers inc. icemaker • GE Spacemaker microwave • GE Advantium Oven • Jennair 3 unit modular range air grill: • 2 dual burner, 2 grill, & 2 griddle inserts • Custom SS fiddles and pot holders • Miele dishwasher • KitchenAid trash compactor • 3 stainless steel sinks • Granite countertops • Grohe fixtures

Refreshment Bar

To starboard of the galley island is a separate beverage center with ice maker, wine cellar, and storage, including a drawer for easy access to bottle storage with deep storage for additional bottles. • Sub-Zero 30 lb/day ice making unit • Sub-Zero 46 bottle wine cellar • Upper cabinet for glasses • Granite countertop

Stairs & Companionway

Wide, gentle slope steps to lower foyer with art niche and cabinet for built-in vacuum. Open stainless steel railings on stairs for spacious feeling and recessed hand rails for secure movement with integrated red lighting for night running. • Radio/cell phone charging station • (6) Charging stations for Icom radios • Docking station for Iridium portable satphone • Bookshelf for manuals & guidebooks

Office

Located directly off the stairs open to companionway. Provides large desk and work area. • Multi-line phone • Ethernet jacks • AC & DC house panels • Stereo controls • 2 drawer file cabinet • Printer cabinet • Manuals cabinet • Electronics cabinet: phone system, LAN, on-boat WIFI, network equipment

Master Stateroom

From the galley down a few stairs leads to the staterooms. Watertight door between master and companionway. There is also a solid wood door for aesthetic and sound insulation offering double separation between the master and guest staterooms. The amidships master is oversized with generous stowage in drawers, cabinets, hanging lockers, and bookshelves. Convenient 3-way lighting controls with dimmers by door and each side of bed. Also on each side of the bed are controls for the multi-zone stereo system and multi-line phone system. • King size bed, walkaround • Tempur-Pedic mattress topper • Furuno RD-30 depth/speed/wind display • Remote VHF radio • Built-in stereo speakers • Reading lamps • (22) Drawers • Adjustable fresh air vent • Opening portlight • Red night lighting

Master Head

The ensuite master head is large and allows room for a 4' diameter round shower with frameless glass enclosure and bench seat. Instant on hot water circulation and diesel fired unlimited hot water for long rejuvenating showers. • Luxurious vessel sink • FW Tecma over-sized head • Butcherblock maple countertop • Ceramic tile sole • Custom limestone shower tiles w/ gold edging • Built-in hamper • Numerous cabinets • Opening portlight • Red night lighting

Guest Stateroom Port

Set up as a stateroom with excessive comforts and conveniences and generous liveaboard stowage. A substantial secondary office includes desk, drawers, and workable surface area. • Full size bed • Twin bunk, extra long • Built-in desk • Ethernet connection • Multi-line phone • Stereo controls • Built-in speakers • Hanging locker • Numerous drawers • Numerous cabinets • Built-in hamper • 2-way light controls w/ dimmers • Reading lamps • Adjustable fresh air vent • Opening portlight

VIP Suite, Forward

The VIP stateroom allows for ensuite capabilities with door access to the guest head. The stateroom is oversized and offers abundant stowage. • Queen size bed, walkaround • Tempur-Pedic mattress topper • Stereo controls • Built-in speakers • Multi-line phone • Hanging locker • Built-in hamper • 2-way light controls w/ dimmers • Reading lamps • Adjustable fresh air vent • (2) opening portlights

Guest Head

The guest head is accessed from the companionway or from the VIP suite and features an oversized tiled shower with frameless glass enclosure and bench seat.

- Full size sink • Marble countertop • Numerous cabinets • FW Tecma over-sized head • Red night lighting • Adjustable lighted make-up mirror

Pilothouse

Entry to the pilothouse is up a 2 steps from the galley/salon or from port or starboard watertight doors or from the flybridge. The pilothouse is every helmsman's dream: Panoramic windows, Stidd captain seats, pilot berth, settee for several guests, and the best of electronics with redundancies.

- (2) Stidd 500X helm seats

- Heated window
- Snack table
- 24v & 12v DC panels
- Controls for bilge pump, generators, & watermaker
- 12v battery & charge system for controls
- (5) full-size chart drawers
- (3) drawers for tools and misc.
- (2) deep drawers for gear
- Hanging locker
- Computer cabinet for dual helm computers & printer
- Built-in speakers w/ stereo control
- Red night lighting w/dimmer

Electronics

In addition to the extensive array of electronics and nav equipment, and their redundancies, there is a well designed phone system that includes a Panasonic PBX with stations in all rooms providing access to cell lines, Iridium, shore lines, room to room calling, and paging. Cell phones connect to the ship's phone system via Bluetooth for incoming and outbound calls from anywhere on the ship and connect through an amplified antenna on the mast.

- Outside remote stations
- Handheld remote control reaches side decks & bow
- Furuno 12kw, 72nm 4' open array radar
- Furuno 25kw, 96nm 6' open array radar
- (2) ARPA for radar
- Furuno GPS 37/WAAS
- Furuno GPS Navnet WAAS
- (2) PC Chartplotter w/Nobeltec & Coastal Explorer
- Furuno NavNet1 Chartplotter w/C-Map charts
- C-Map charts: Newfoundland thru Carribean incl Bahamas & Venezuela
- (2) Dell Tower computers for Coastal Explorer 2011 & Nobeltec Admiral Chart Plotter systems
- Furuno depth sounder
- Furuno sonar CH 250
- (2)Furuno RD-30 depth/speed/wind display
- Furuno PG1000 rate compass
- Furuno SC-50 THD Satellite compass (2010)
- ComNav magnetic compass (2010)
- Robertson autopilot AP20
- Robertson FU50 follow-up steering lever
- Robertson RI35 Rudder angle indicator
- Robertson fluxgate compass

- Robertson RF300 Rudder feedback unit
- Robertson Junction Unit J300
- Autopilot Pump Engine Driven
- Navnet Navtex/weatherfax
- Samsung 19" Monitor for radar
- Samsung 19" Monitor for charting
- Samsung 19" Monitor for surveillance
- Helm Motion gyration mouse
- Nav Motion gyration mouse
- Selectors for back-up nav input to AP
- Selector for GPS selection each nav computer
- ICOM VHF M-502
- ICOM VHF #2 M-602 w hailer
- ICOM SSB M802
- Iridium Satphone
- Thrustmaster position indicator
- Computank display system
- Floscan
- Airmar Ultrasonic speed sensor
- Network Sounder BBFF1
- Furuno 525ST-MSD transducer w/speed & temp
- Sitex ADF VHF Direction finder
- Cell phone antenna: Digital 567CW - 8'
- Cell phone amplifier: Digital 4000 DA4000
- Cell phone combiner: Digital 4000 DA4100
- TV VHF/UHF/FM antenna: Digital 551TV
- Weather sensor Wired Boat Co. - CV3FB
- Newmar hailer horn 2-way intercom for wheelhouse roof
- Hailer/horn 2-way intercom for back deck
- Kahlenburg 3 tone air horn
- Kahlenburg horn controller
- Kahlenburg horn air compressor
- (2) Search/spot lights w/cameras
- Windshield wiper controls, individ/synch
- Plumbed windshield washers
- Wesmar gyro stabilizer control
- Delta T Engine room ventilation control
- (2) Maxwell 4500 chain counter/controllers
- High water alarm
- Morad 5' VHF antenna
- VHF ANTENNA #2: 18'
- Morad 28' SSB antenna
- Antenna Tuner AT140 for SSB M802
- MFT Insulator

- VHF Antenna Mount
- SSB Antenna Mount Bracket
- Lorex camera multiplexor: engine room, cockpit, & (2) spotlights
- EBIRP w/hydrostatic release on boat rail
- EBIRP for manual activation in ditch bag
- Weems & Plath 7" brass clock
- Weems & Plath 7" brass baromete

Electrical

Dedicated battery and charging system for pilothouse 12v systems located high above potential flooding areas. Independent starting batteries for the engine and each generator for ultimate redundancy. Inverters handle full ship's load excluding air conditioning, watermaker, and range. • Onan 17 kW 120/240vac 60hz • Onan 11 kW 120/240vac 60hz • (2) Trace 4kW pure sine inverter/charger • (10) AGM 8D marine house batteries (2009) • (4) AGM G/S start batteries (2009) • AGM electronics battery (2009) • Isobost isolation transformer • Glendinning Cable Master • 100 ft shore power cable

Utility Room

The utility room provides a large work area for housing equipment and provides a separation between the staterooms and the engine room. A watertight door to the engine room has a view port. • Asko Washer • Asko Dryer • Bauer scuba compressor • Tool air compressor • Workbench w/ sink and vise • Numerous cabinets • Main AC & DC panels • Link battery monitor • Fuel shut offs • Built-in fire suppression system w/ pull trigger

Mechanics

Standing room access in air conditioned walkaround engine room. Watertight door between engine room and utility room. Cape Horn's philosophy of redundancies are exemplified in many engine room applications. Exceptional features such as (3) Hydraulic Systems: (1) for bow thruster, windlass, and stabilizers (2) system for Z drive with idle engine speed booster. The air conditioning system is comprised of redundant Marine Air 3 ton chiller units which operable together or independently. Keel cooling on main engine. Fuel plumbing is 316 stainless steel. • Cummins N14M 440 hp • Thrustmaster Z-Drive w/speed nozzle • Wesmar 9 sq. ft. stabilizers • Wesmar 38hp bow thruster • ZF Marine throttle controls w/4 portable remote stations • (2) electric/hydraulic motors for autopilot/helm steering & crane (2009) • FCI Watermaker 1500 gpd (new membranes, pump, motor 2009) • Marine Air 3+3 ton split unit, 7 air handlers • Independent Engine Room air conditioning • Hurricane diesel furnace (2009) • Isotherm diesel/electric water heater (2009) • Environmental Marine Type II MSD sanitation system • (4) Perfect filter 26 gph fuel polishing filters • Spinner II oil cleaning centrifuge 120gph for Cummins (2009) • (2) Globe

fuel transfer pumps, plumbed for redundancy • Racor 8570C Duplex final stage filters • X-Change-R oil change pump plumbed to main eng, 2 gensets, transmission • (2) Sea Chest sea water intakes • Water Lift muffler exhaust (s/s water jacketed section 2009) • Silex exhaust blanket wrap • Delta T ventilation system • Kidde FM200 fire extinguisher system • Heat detectors • 120 gpm emergency bilge pump • (4) Rule 3800 gpm bilge pumps • (2) Macerator pumps • (2) MSD holding tank pumps w/ y-valve • (2) Gray water pumps w/ y-valve • Duplex Plunger 2 gpm water pressure system, plumbed for redundancy • Isotemp hot water tank w/ back-up elect htr • Hot water constant circulation

Tankage

Internally baffled fuel tanks w/clean-out access hatch in cabin sole. Computank display system; Floscan system. Fuel consumption is 8 gallons per hour at 7.5 knots @ 1200rpm; long distance efficiency fuel consumption is 4.2 gph at 6.3 knots @ 1000rpm. All below waterline drains and condensate lines plumbed to closed gray water tank with automatic pump. No drainage into the bilge to keep bilges dry (excl. aft deck hatch). • Fuel bunkers - 5,200 US gal in 2 forward & 2 midship tanks in double hull • Fuel day tanks - 344 gal in two day tanks in utility room double hull • Total fuel = 5,544 in 6 tanks • Fresh water - 500 gal in two tanks in double hull • Gray water - 100 gal • Holding tanks - >200 gal treated water holding tank for output of Environmental Marine 1200 Type II MSD • Lube oil - 120 US gal each of fresh and used lube oil

Flybridge

Flybridge access is by way of full stairs through a watertight door from the pilothouse to the sundeck and full stairs from the sundeck to the flybridge. Huge 27'x19' sun deck for parties and lounging in the sun. In 2009 the stainless steel railings were reinforced and custom crane and dinghy were added. • Simrad AP-20 remote autopilot flybridge • Handheld remote engine controls • Robertson FU50 follow-up steering lever • ICOM VHF remote mike • (2) Furuno RD-30 depth/wind/speed display • Large storage lockers • (4) indoor/outdoor stereo speakers w/ remote • H.S. Marine 2000lb hydraulic knuckle lift crane (2009) • Yamaha 4-stroke 50 hp electric start outboard engine • 15.5' Zodiac center console 9 man Pro tender (2009) • Laser sailboat and cradle (2009) • (2) Kayaks

Aft Deck

The aft deck is a convenient area for alfresco dining or lounging. It provides spiral stairs to the swim platform. The swim platform has five railing staples and removable swim ladder with storage brackets and hot/cold shower in recessed cabinet in addition to large storage locker and flood lights. • Teak table & chairs to seat 10 • Cover for table (2009) • Built-in stereo speakers w/ remote control • Diesel fuel hose/nozzle for tender • Watertight hatch to engine room via sloped stair • Lifesling MOB system w/ recovery stations at P & S boarding gates

Deck Equipment

MarineDeck 2000 by Marquipt on fore, side, and aft decks.

- (2) Maxwell 4500 hydraulic windlasses w/hand-held remotes & PH controls
- (2) Chain counters
- ROCNA 243 lb anchor
- 110 lb Bruce anchor
- (2) 400' Acco 9/16" G4 all-chain anchor systems
- Snubber block and lines (2012)
- Ovatek 7 passenger life boat
- Fresh water outlet foredeck
- Built-in hot/cold water shower
- High pressure washdown system, 4 gpm @1,100 psi FW w/ spray wands on FB, Portuguese bridge, & aft deck
- Flood lights on fore deck, sun deck, swim platform, and FB

Construction

Built to meet or exceed ABS Commercial Rules at the A.F. Theriault yard in Nova Scotia under the supervision of Peter Sever, Arthur Theriault, and Graham Oakley. Interior watertight doors are between engine room and utility room and between master stateroom to lower hall. There are also two watertight bilge sections and a watertight bulkhead between the forward stateroom and the bow section (about 6' of the bow). All 5 exterior doors are watertight (salon, galley, pilot house port and starboard, pilot house to boat deck). Also water tight hatches to the bow locker, engine room from the aft deck and three into the bilges; 4 watertight compartments above watertight double hull. 5/16" plate below waterline; 3" x 18" keel plate;. All exterior glass rated for inverted water pressure (1/2" min). Self-righting capabilities. Closed cell R17 no condensation, fire proof blown insulation.

New bottom paint Sept. 2012; in 2009, bottom was taken down to bare metal and built up with new primers.

- Bulbous bow
- Bilge keels
- Portuguese Bridge
- Ball valves 316 SS
- Thru-hulls 316 SS
- Bollards 316 SS, hull welded
- Divided 304 SS chain locker
- 10' x 15' aft deck
- 27' x 19' top deck
- Swim platform w/ladder

Upgrades

Current owners have spent approximately \$350,000 in upgrades not including regular maintenance since purchase:

Old paint removed to bare steel hull and built back up again with new primers and bottom paint from water line down in 2009. New bottom paint 2012.

H.S. Marine AK7-E2 2,000 lb. hydraulic knuckle lift crane (2) independent (redundant) electric / hydraulic motors for auto pilot/helm power steering and crane operation 110 kg (243 lb.) ROCNA main anchor 120 gph (model 960 Spinner II) remote oil cleaning centrifuge for Cummins N14-M lube oil New Hurricane diesel furnace and Isotherm diesel / electric water heater New membranes, pump, motor, and circuit board for FCI Max Q water maker reinforced upper boat deck ss railings (2) plastic Kayaks 15.5' center console Zodiac 9 Man Pro tender with 50 hp electric start 4 stroke Yamaha outboard cradle for 10.3' Achilles RIB dinghy (note: owner no longer has dinghy) Black Starboard outboard bracket for small outboards stored on the aft upper boat deck Custom made ss fiddles and pot holders for Jenn-Air glass cook top installed. 10 new 8D house, four new G/S start, one new electronics batteries, and 2 AGM 8Ds for the Cummins engine (Sept. 2012); all AGM types New anchor snubber block and lines New Sony 32" flat screen TV / movie monitor and cover New removable card table with felt and vinyl covers in saloon New vinyl cover for aft cockpit Teak dining table Z-drive serviced, new oil, new rings 9/2012

Exclusions

Art Ships bell Personal items Name "Windermere" reserved

Исключения

При продаже яхты исключаются личные вещи владельца.

Отказ от ответственности

Компания предоставляет описание судна или яхты добросовестно, но не может гарантировать точность этой информации, а также не ручается за техническое состояние. Покупатель должен проинструктировать своих агентов или оценщиков исследовать представленную информацию более подробно, по собственному желанию. Продажа судна или яхты, изменение цены или снятие с продажи будет происходить без предварительного уведомления.

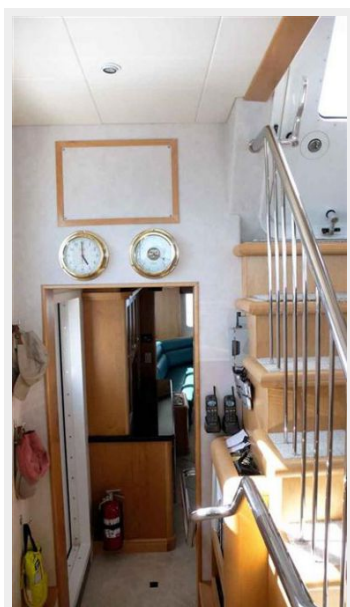
ФОТОГРАФИИ



















КОНТАКТЫ

Андрей Шестаков (Andrey Shestakov) – ведущий яхтенный брокер отдела продаж яхт и судов компании Shestakov Yacht Sales Inc. Официальный представитель Shestakov Yacht Sales Inc. для русскоговорящих клиентов в центральном офисе компании в Майами/Форт Лодердейл/Флорида/США.

Контактная информация

Email: andrey@shestakovyachtsales.com

Web: shestakovyachtsales.com

Телефоны

Краснодарский край: **+7(918)465-66-44**

США, Майами, Флорида: **+1(954)274-4435**

Время работы

Понедельник – Суббота: **9:00 - 21:00**
EDT

Воскресенье: **Закрито**

Адрес



Harbour Towne Marina, 850 NE 3rd St,
STE 213, Dania, FL 33004