

FIRST CHOICE — SEA RAY



Builder: SEA RAY

Year Built: 1998

Model: SHELBY

Price: PRICE ON APPLICATION

Location: United States

LOA: 37' 0" (11.28m)

Beam: 14' 4" (4.34m)

Min Draft: 3' 3" (0.97m)

Max Draft: 3' 3" (0.97m)

Our experienced yacht broker, Andrey Shestakov, will help you choose and buy a yacht that best suits your needs **First Choice — SEA RAY** from our catalogue. Presently, at Shestakov Yacht Sales Inc., we have a wide variety of yachts available on our sale's list. We also work in close contact with all the big yacht manufacturers from all over the world.

If you would like to buy a yacht **First Choice — SEA RAY** or would like help answering any questions concerning purchasing, selling or chartering a yacht, please call **+1(954)274-4435**

TABLE OF CONTENTS

TABLE OF CONTENTS	2
SPECIFICATIONS	4
Overview	4
Basic Information	4
Dimensions	4
Speed, Capacities and Weight	4
Hull and Deck Information	5
Engine Information	5
DETAILED INFORMATION	6
Key Features & Upgrades	6
Exclusions	9
Disclaimer	9
PHOTOS	10
Helm Companion Settee	10
Helm Station	10
Aft Cabin	10
Aft Cabin	10
Extended Swim Platform	10
HD Radar / Sat TV	10
Salon	11
Salon	11
Galley	11
Master SR	11
Master SR TV	11
VIP SR	11
Washer / Dryer	12
VIP SR TV	12
Engine Room	12

Engine Room	12
Engine Room	12
Engine Room	12
CONTACTS	13
Contact details	13
Telephones	13
Office hours	13
Address	13

SPECIFICATIONS

Overview

1998 37' Sea Ray Aft Cabin MotorYacht - Excellently Maintained & Kept at Covered Dock

****Updated Electronics including Garmin 4012, HD Radar, Autopilot, Dual Freq. Depth Finder****

Lots of Additional Upgrades Including Bow Thruster, 3000 Watt Inverter, Satellite TV, Custom Made Swim Platform for Tender, Upgraded A/C in Salon + More!!

Owner Says Sell, Call with an Offer Today!!

Basic Information

Category: SHELBY

Sub Category: Aft Cabin

Model Year: 1998

Year Built: 1998

Country: United States

Cockpit: Yes

Dimensions

LOA: 37' 0" (11.28m)

Beam: 14' 4" (4.34m)

Min Draft: 3' 3" (0.97m)

Max Draft: 3' 3" (0.97m)

Speed, Capacities and Weight

Displacement: 24000 Pounds

Water Capacity: 100 Gallons

Holding Tank: 55 Gallons

Fuel Capacity: 300 Gallons

Hull and Deck Information

Hull Material: Fiberglass

Hull Color: White

Engine Information

Engines: 2

Manufacturer: Mercruiser

Model: 7.4L MPI Horizon

Engine Type: Inboard

Fuel Type: Gas

DETAILED INFORMATION

Key Features & Upgrades

- Garmin 4012 w/ HD Radar & Dual Frequency Depth Finder
- AutoPilot
- Satellite TV
- Bow Thruster
- 3000 Watt Inverter
- Custom Made Swim Platform for Dinghy Transport
- Upgraded A/C in Salon
- Port Engine Replaced in 2008

Manufacturers Description:

The Sea Ray 370 Aft Cabin is a sport yacht that enables you to spend the night away from home. Powered by twin 7.4L MerCruiser inboards, the 370 Aft Cabin features a center helm station with burl instrument panels, custom slide - swivel helm seats and an aft-facing sun lounger and bench seat with storage below. A wide 14-foot, three-inch beam enables the 370 Aft Cabin to provide ample, level walkways to the foredeck on both port and starboard sides. Welded stainless steel stanchions with through-bolted stainless steel handrails and bow rail ensure passengers a safe trip forward and aft. The spacious aft deck is covered by a fiberglass hardtop, has port and starboard entrance doors, and can be fully enclosed by custom side and aft skirts. This deck features 12-volt lighting, a built-in wet bar with sink, beverage holders, and trash receptacle. Access the bridge from the aft deck via portside molded steps. Two adjustable captain's chairs face the helm station. Guests can relax on the bench seat or the forward-facing sun lounger on the starboard side. The aluminum-framed Venturi windshield is tinted for optimum viewing. The center helm station has burl instrument panels with custom backlit instrumentation and a Raytheon electronics package that includes a VHF radio and Raydata multifunction instrument with depth finder, speed - sumlog, and water temperature. Below decks, there's a large salon with an L-shaped sofa, a dining - cocktail table and an entertainment center. Guests can relax in a comfortable barrel chair and enjoy the built-in 20-inch color TV - VCR combo with remote and Clarion digital AM - FM cassette stereo. The L-shaped sofa has an electrically operated slide-out bed to accommodate overnight guests. The pedestal dining - cocktail table stores out of sight when not in use. In the aft master stateroom, a queen-size bed with innerspring mattress ensures maximum comfort. Cedar-lined closets and a hanging locker with mirrored doors provide plenty of room for clothing. The en suite head has a VacuFlush toilet, Corian vanity with sink, and shower with seat and bifold door. The forward stateroom features a full-size pedestal bed, cedar-lined hanging lockers with mirrored doors, side shelf storage, a privacy door, and private access to the main head. The forward head compartment features a VacuFlush toilet, molded vanity with

sink and Corian countertop, and pullout shower wand. The port stateroom features a twin bed and built-in storage. The galley has a 7.4-cubic-foot refrigerator - freezer, flush-mounted three-burner electric stove, and microwave - convection oven.

Salon:

- Central-Vac
- Convertible Seeper Sofa
- Barrell Chair
- Color Television
- Solid Countertops and Tables
- Mini Blinds w/ Drape Trim

Galley:

- 3 Burner electric stove
- Microwave / Convection Oven
- Refrigerator / Freezer
- Fiberglass Solid Surface Countertop
- Built in Coffee Pot

Staterooms:**Master Stateroom:**

- Queen Sized Bed
- Storage Under Bed
- Flat Screen TV
- Cedar Lined Hanging Locker
- Vanity w/ Corian Countertop

VIP Stateroom:

- Full Sized Island Bed
- Cedar Lined Hanging Lockers
- Storage Under Bed
- 13" TV

Engines & Mechanical:

- Twin 7.4L MPI Horizon Inboards, Approximately 200 Hours on Port Engine & 782 Hours on Starboard Engine
- 3 Bilge Pumps
- Bilge Lights
- Dripless Shaft Seals
- Halon System
- Closed Cooling
- Cabin High Water Alarm & Pump
- Seawater Strainers
- Air/Heat 30,000 BTU

Electrical:

- 2-110v AC, 30A Service w/Cords
- 8KW Westerbeke Generator
- Phone & Cable Inlets
- 12v DC
- Batteries-5
- Battery Charger, Pro Mariner 40
- Battery Switches

Deck:

- Full aft deck enclosures
- Wing door aft
- Built-in wet bar
- Icemaker on aft deck
- Molded Swim Platform

- Hot & Cold Transom Shower
- Windlass

Exclusions

Owner's personal belongings.

Disclaimer

The Company offers the details of this vessel or yacht in good faith but cannot guarantee or warrant the accuracy of this information nor warrant the condition of the vessel. A buyer should instruct his representatives, agents, or his surveyors, to investigate such details as the buyer desires validated. This vessel or yacht is offered subject to prior sale, price change, or withdrawal without notice.

PHOTOS

Helm Station



Helm Companion Settee



Aft Cabin



Aft Cabin



Extended Swim Platform



HD Radar / Sat TV



Salon



Salon



Galley



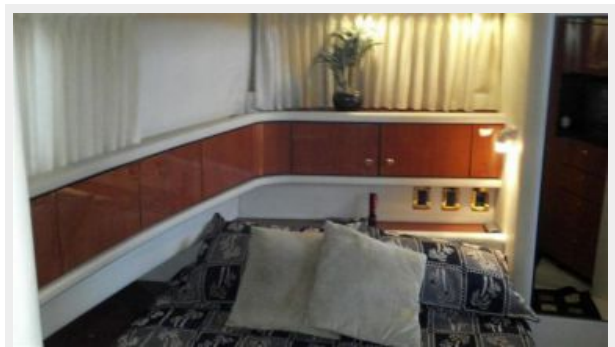
Master SR



Master SR TV



VIP SR



VIP SR TV



Washer / Dryer



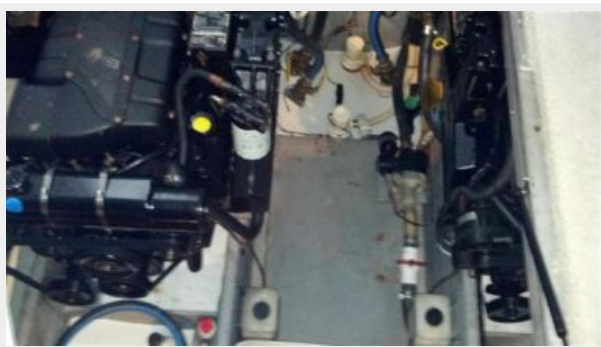
Engine Room



Engine Room



Engine Room



Engine Room



CONTACTS

Andrey Shestakov, leading yacht broker of the sales department of Shestakov Yacht Sales Inc. Shestakov Yacht Sales Inc., the official representative of the Miami/Fort Lauderdale FL headquarters.

Contact details

Email: andrey@shestakovyachtsales.com

Web: shestakovyachtsales.com/en/

Telephones

USA: +1(954)274-4435

Office hours

Monday – Saturday: **9:00 - 21:00** EDT

Sunday: **closed**

Address



Harbour Towne Marina, 850 NE 3rd St,
STE 213, Dania, FL 33004