

NASSIMA — ACICO YACHTS



Builder: [Acico Yachts](#)

Year Built: 2012

Model: Motor Yacht

Price: PRICE ON APPLICATION

Location: Italy

LOA: 161' 5" (49.18m)

Beam: 28' 11" (8.80m)

Max Draft: 7' 11" (2.40m)

Cruise Speed: 14 Kts. (16 MPH)

Max Speed: 17 Kts. (20 MPH)

Our experienced yacht broker, Andrey Shestakov, will help you choose and buy a yacht that best suits your needs **Nassima — Acico Yachts** from our catalogue. Presently, at Shestakov Yacht Sales Inc., we have a wide variety of yachts available on our sale's list. We also work in close contact with all the big yacht manufacturers from all over the world.

If you would like to buy a yacht **Nassima — Acico Yachts** or would like help answering any questions concerning purchasing, selling or chartering a yacht, please call **+1(954)274-4435**

TABLE OF CONTENTS

TABLE OF CONTENTS	2
SPECIFICATIONS	3
Overview	3
Basic Information	3
Dimensions	3
Speed, Capacities and Weight	4
Accommodations	4
Hull and Deck Information	4
Engine Information	4
DETAILED INFORMATION	5
General Information	5
Audio & Visual Equipment	5
Electrical Equipment	5
Navigation & Communication Equipment	5
Safety Equipment	6
Tenders & Toys	6
Exclusions	6
Disclaimer	6
PHOTOS	7
CONTACTS	13
Contact details	13
Telephones	13
Office hours	13
Address	13

SPECIFICATIONS

Overview

M/Y Nassima will reach a top speed of 17 knots and a cruising speed of 14 knots, her enormous range at 10 knots will be 4800 nautical miles, making her a true long range yacht. A classic, timeless design by Oliver van Meer features an extraordinary stern garage for a car and two motor bikes, as well as a spacious sundeck and a large aquarium on the main deck. The interior is designed by Maja von Dewitz, VDP Studio GmbH and to match the shipyards highest standards, they have been chosen as their production partner. The interior is coherent thought the three decks and matches the outside style of the yacht.

By having the aquarium as a division between the saloon and aft deck, the surrounding environment of the Ocean is brought to life on deck.

The owner will enjoy a large personal gym as well as a spacious owner's cabin on the upper deck. The lower deck features a spacious, full beam VIP cabin as well as four twin guest cabins.

The yacht classification is MCA LY2 unrestricted services / ABS. Adjacent to the wheelhouse there is a captain's cabin, on the lower deck are four double and one single crew accommodations; 9 crew in total. The crews mess is fully independent from the galley.

Basic Information

Category: Motor Yacht

Model Year: 2012

Year Built: 2012

Country: Italy

Cockpit: Yes

Dimensions

LOA: 161' 5" (49.18m)

Beam: 28' 11" (8.80m)

Max Draft: 7' 11" (2.40m)

Speed, Capacities and Weight

Cruise Speed: 14 Kts. (16 MPH)

Cruise Speed Range: 4800

Max Speed: 17 Kts. (20 MPH)

Displacement: 727525.4646 Pounds

Accommodations

Total Cabins: 6

Sleeps: 12

Crew Sleeps: 9

Hull and Deck Information

Hull Material: Aluminum

Deck Material: Teak

Engine Information

Engines: 2

Manufacturer: Caterpillar

Engine Type: Inboard

Fuel Type: Diesel

DETAILED INFORMATION

General Information

Naval Architect/Designer : Olivier F. van Meer Design BV Builder : ACICO Yachts BV Flag Authority : Cayman Island Shipping Registry (CISR) Classification Society : American Bureau of Shipping (ABS) Type of Yacht : 49 meter twin screw, aluminium, semi-displacement oceangoing luxury motor yacht. Classification Gross tonnage : 493 GT Total propulsion power : 3.528 kW Total electrical power : 350 kW Passengers : maximum 12 persons MCA : Letter of Compliance for Large Commercial Yacht Code LY2

Audio & Visual Equipment

Audio and video/Internet/communication · A complete internet access system will be installed · A complete entertainment system will be installed · A Sat/Com system will be installed · All above with distribute connections in all accommodation spaces on-board Closed circuit television system A closed circuit television system will be installed to monitor the decks and engine room.

Electrical Equipment

Electrical system The electrical installation is based on the specified consumers and systems and will be designed according the Class Rules. The main generators will run in a parallel mode, automatically operated. The electrical engineers from the electrical sub-contractor and the engineers from the yard will detail the final design of the installation and will make a load analysis. The electrical installation will consist of the following: · 230/400 VAC, 3 phase 50 Hz, 4 wire grounded neutral system · 24 DC System for service, start, radio and emergency system · Distribution, control and alarm boxes · Alarm & operation system Navigation lights Nassima will be equipped with navigation lights according to class rules. Underwater lighting On the aft ship 6 and on the bulb 2 underwater LED lights are built in.

Navigation & Communication Equipment

Navigation Equipment: This list gives an impression of the required functions. However due to the swift development of this equipment the final selection will be made in the relevant time frame. · Echosounder · Speedlog · GPS receiver · Radar Equipment · Gyrocompass system · Magnetic compass system · Navigation computer with chart software Communication Equipment This list gives an impression of the required functions. However due to the swift development of this equipment the final selection will be made in the relevant time frame. · VHF radio-telephone 2x: · SSB radio telephone: · Navtex receiver: · GMDSS portable transceivers 2x · E.P.I.R.B: · Radar transponder: · Telephone Exchange: · Triple band GSM telephone: · Antenna system:

Safety Equipment

Alarm installation The vessel will be equipped with an alarm & monitoring system to protect and control the on-board systems and machineries installed. The alarms will be displayed on an engine room mounted alarm panel with a direct link to the wheelhouse instrument panel for the most urgent remote alarms. Intruder alarm system All exterior doors, operable windows and escapes will have a sensor connected to an intruder alarm system. Fire extinguishing and detection system A hi-fog sprinkler will be installed in the accommodation areas An automatic Novec fire extinguishing system will be installed in the engine room Local portable fire extinguishers as specified by MCA A salt water fire main will be installed, fed by means of 2 independent driven fire pumps and hydrants supplied with nozzles and hoses according rules and regulations In the deckhouse, near the navigation area, a Tyco fire detection cabinet will be mounted. Sensors mounted in the accommodation, engine room, forepeak and lazarette will be connected to this cabinet To meet the class and MCA rules, an independent portable, diesel driven emergency pump will be stored in the tender storage

Tenders & Toys

Jet Skis: Two Yamaha Jet Skis stored on the foredeck.

Exclusions

Owner's personal belongings.

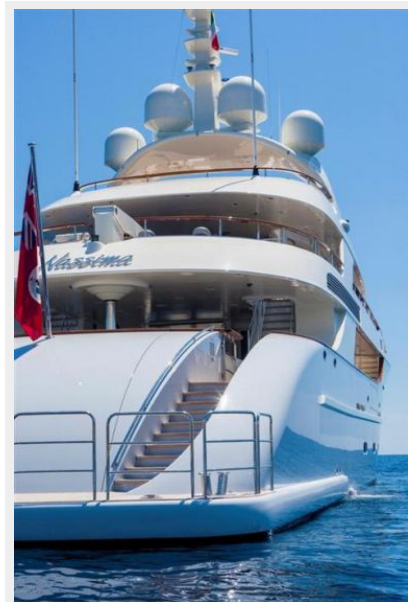
Disclaimer

The Company offers the details of this vessel or yacht in good faith but cannot guarantee or warrant the accuracy of this information nor warrant the condition of the vessel. A buyer should instruct his representatives, agents, or his surveyors, to investigate such details as the buyer desires validated. This vessel or yacht is offered subject to prior sale, price change, or withdrawal without notice.

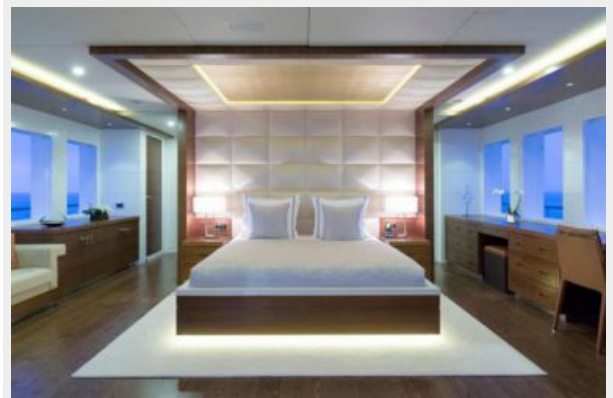
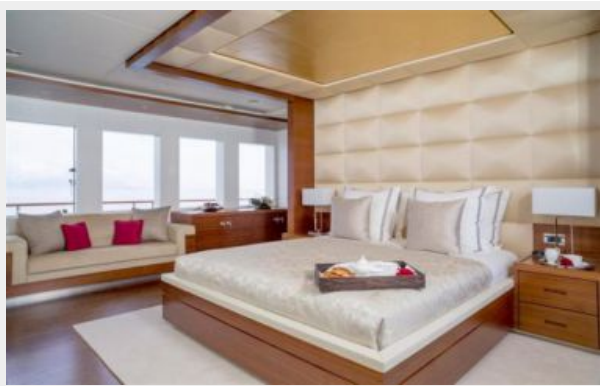
PHOTOS

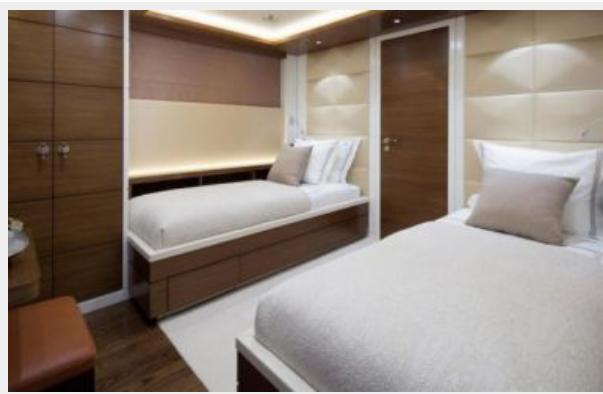












CONTACTS

Andrey Shestakov, leading yacht broker of the sales department of Shestakov Yacht Sales Inc. Shestakov Yacht Sales Inc., the official representative of the Miami/Fort Lauderdale FL headquarters.

Contact details

Email: andrey@shestakovyachtsales.com

Web: shestakovyachtsales.com/en/

Telephones

USA: +1(954)274-4435

Office hours

Monday – Saturday: **9:00 - 21:00** EDT

Sunday: **closed**

Address



Harbour Towne Marina, 850 NE 3rd St,
STE 213, Dania, FL 33004