

ALL OCEAN YACHTS BC 103 MULTI PURPO — ALL OCEAN YACHTS



Builder: ALL OCEAN YACHTS

Year Built: 2025

Model: expedition yacht

Price: \$9,550,000 USD

Location: China

LOA: 103' (31.39mm)

Beam: 24.66

Min Draft: 7' 4" (2.24mm)

Max Draft: 8' (2.44mm)

Cruise Speed: 10 Knots Kts. (12 MPH)

Max Speed: 13 Knots Kts. (15 MPH)

Our experienced yacht broker, Andrey Shestakov, will help you choose and buy a yacht that best suits your needs **All Ocean Yachts BC 103 Multi Purpose Explorer Fiberglass — ALL OCEAN YACHTS** from our catalogue. Presently, at **Shestakov Yacht Sales Inc.**, we have a wide variety of yachts available on our sale's list. We also work in close contact with all the big yacht manufacturers from all over the world.

If you would like to buy a yacht **All Ocean Yachts BC 103 Multi Purpose Explorer Fiberglass — ALL OCEAN YACHTS** or would like help answering any questions concerning purchasing, selling or chartering a yacht, please call **+1(954)274-4435**

TABLE OF CONTENTS

TABLE OF CONTENTS	2
SPECIFICATIONS	4
Overview	4
Basic Information	4
Dimensions	4
Speed, Capacities and Weight	4
Accommodations	5
Hull and Deck Information	5
Engine Information	5
PHOTOS	6
M.P.E standard layout owner and captain up, other options available	6
Flybridge	6
M.P.E standard layout, Country kitchen, other options available	6
M.P.E standard layout other options available	6
Master on main deck option	6
Enclosed galley and dining option	6
Master behind wheelhouse option	7
Main deck option with master on main deck and saloon	7
Master on main deck option	7
Master window lounge / day bed	7
Master on main deck forward view	7
Main saloon option	7
Main saloon 2	8
Banquet dining area enclosed galley	8
dual door china and flatware cabinet with wine cooler	8
Stairs to wheelhouse and lower deck	8
Flybridge over view	8
Flybridge raised seating forward	8

Flybridge sun pad	9
Flybridge BBQ and dining	9
Bar and dining	9
CONTACTS	10
Contact details	10
Telephones	10
Office hours	10
Address	10

SPECIFICATIONS

Overview

New construction, Build time 24 months

Can also be built in Steel.

Basic Information

Category: expedition yacht

Sub Category: Expedition or Explorer

Model Year: 2025

Year Built: 2025

Country: China

Dimensions

LOA: 103' (31.39mm)

LWL: 91' (27.74mm)

Beam: 24.66

Min Draft: 7' 4" (2.24mm)

Max Draft: 8' (2.44mm)

Speed, Capacities and Weight

Cruise Speed: 10 Knots Kts. (12 MPH)

Cruise Speed Range: 4000

Max Speed: 13 Knots Kts. (15 MPH)

Water Capacity: 3000 Gallons

Holding Tank: 854 Gal Gallons

Fuel Capacity: 9800 Gal Gallons

Fuel Consumption: 2 Gal Gallons

Accommodations

Total Cabins: 4

Total Berths: 8

Sleeps: 11

Total Heads: 5

Crew Cabin: 6

Crew Berths: 5

Crew Heads: 3

Hull and Deck Information

Hull Material: Fiberglass

Deck Material: Fiberglass

Hull Configuration: Displacement w/
Bulbous Bow

Exterior Designer: Luiz de Basto Design

Interior Designer: Luiz de Basto Design

Engine Information

Engines: 2

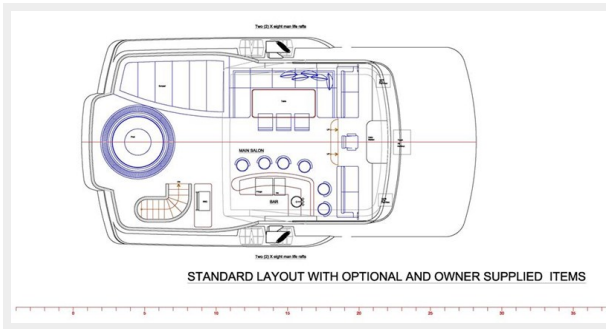
Manufacturer: Caterpillar

Engine Type: Inboard

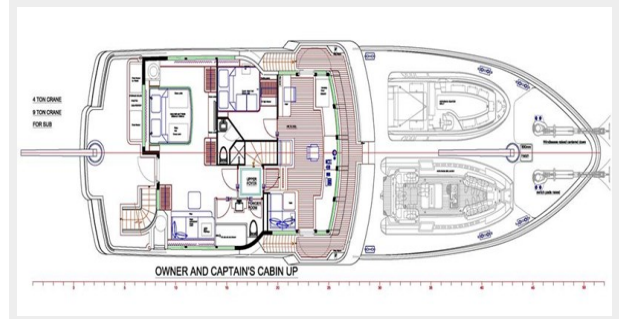
Fuel Type: Diesel

PHOTOS

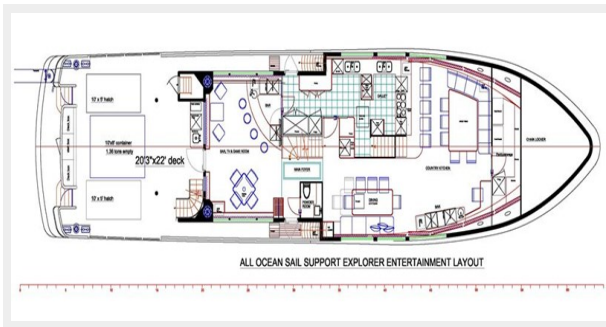
Flybridge



M.P.E standard layout owner and captain up, other options available



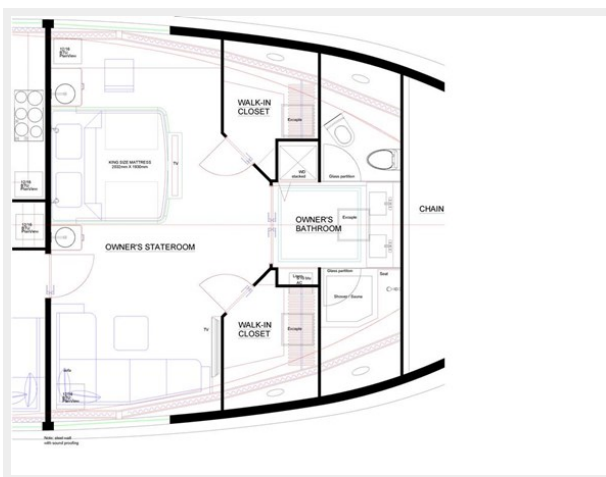
M.P.E standard layout, Country kitchen, other options available



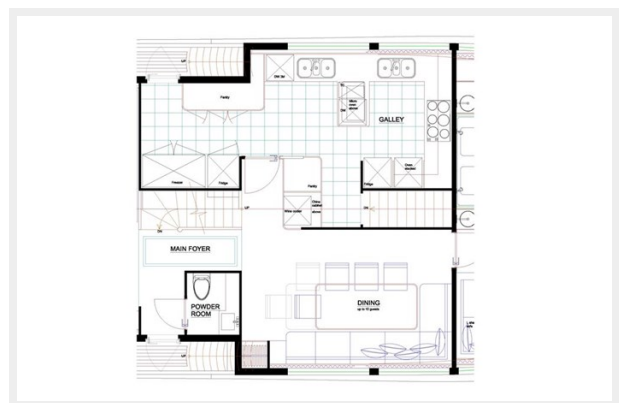
M.P.E standard layout other options available



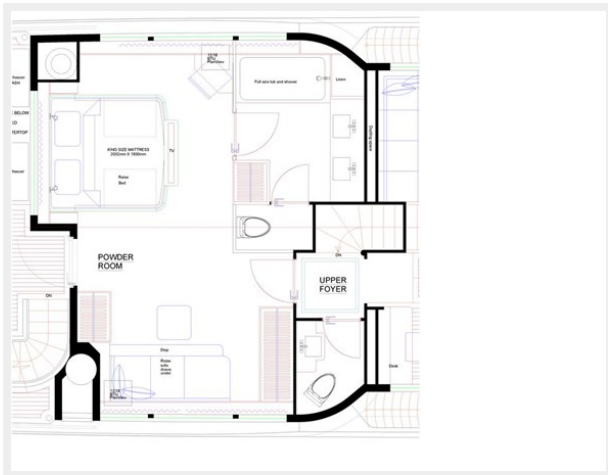
Master on main deck option



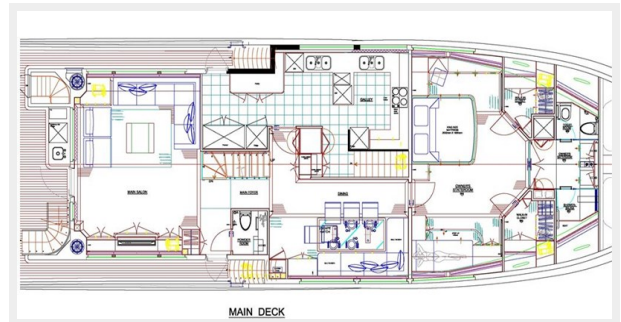
Enclosed galley and dining option



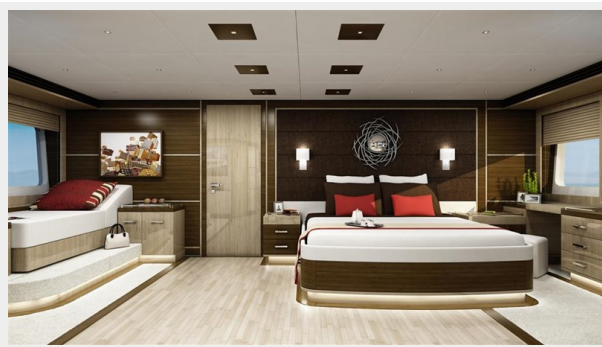
Master behind wheelhouse option



Main deck option with master on main deck and saloon



Master on main deck option



Master window lounge / day bed



Master on main deck forward view



Main saloon option



Main saloon 2



Banquet dining area enclosed galley



dual door china and flatware cabinet with wine cooler



Stairs to wheelhouse and lower deck



Flybridge over view



Flybridge raised seating forward



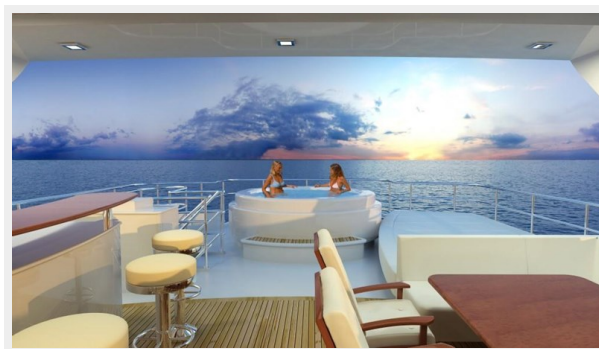
Flybridge sun pad



Flybridge BBQ and dining



Bar and dining



CONTACTS

Andrey Shestakov, leading yacht broker of the sales department of Shestakov Yacht Sales Inc. Shestakov Yacht Sales Inc., the official representative of the Miami/Fort Lauderdale FL headquarters.

Contact details

Email: andrey@shestakovyachtsales.com

Web: shestakovyachtsales.com/en/

Telephones

USA: +1(954)274-4435

Office hours

Monday – Saturday: **9:00 - 21:00** EDT

Sunday: **closed**

Address



Harbour Towne Marina, 850 NE 3rd St,
STE 213, Dania, FL 33004