

ESSENCE OF CAYMAN — VICEM



Builder: VICEM

Year Built: 2006

Model: Motor Yacht

Price: PRICE ON APPLICATION

Location: United States

LOA: 85' 0" (25.91m)

Beam: 20' 8" (6.30m)

Min Draft: 6' 0" (1.83m)

Cruise Speed: 19 Kts. (22 MPH)

Max Speed: 25 Kts. (29 MPH)

Our experienced yacht broker, Andrey Shestakov, will help you choose and buy a yacht that best suits your needs **Essence of Cayman — VICEM** from our catalogue. Presently, at Shestakov Yacht Sales Inc., we have a wide variety of yachts available on our sale's list. We also work in close contact with all the big yacht manufacturers from all over the world.

If you would like to buy a yacht **Essence of Cayman — VICEM** or would like help answering any questions concerning purchasing, selling or chartering a yacht, please call **+1(954)274-4435**

TABLE OF CONTENTS

TABLE OF CONTENTS	2
SPECIFICATIONS	5
Basic Information	5
Dimensions	5
Speed, Capacities and Weight	5
Accommodations	5
Hull and Deck Information	5
Engine Information	6
DETAILED INFORMATION	7
Overview	7
Pilothouse	7
Upper Salon	8
Engine Room	8
Galley	8
Master Suite	9
Port & Starboard Guest Cabins	9
Crew Quarters	9
Aft Lazerette	9
Aft Deck	9
Broker's Comments	10
Remarks	10
Exclusions	10
Disclaimer	10
PHOTOS	11
SALON	11
SALON	11
SALON	11
SALON	11

SALON	11
HELM	11
NAV DESK	12
MAIN DECK	12
MAIN DECK	12
MAIN DECK	12
STAIRS	13
MAIN DECK	13
MASTER HEAD	13
MASTER	13
HEAD	14
GUEST CABIN	14
HEAD SINK	14
HEAD SINK	14
HEAD	15
GUEST	15
LOWER SALON	15
LOWER SALON	15
LOWER SALON	15
DINING	15
ESSENCE OF CAYMAN 85' Vicem GALLEY	16
ENGINE ROOM	16
ENGINE ROOM	16
TRANSOM	16
ESSENCE OF CAYMAN 85' Vicem Aerial	16
ESSENCE OF CAYMAN 85' Vicem STARBOARD	16
ESSENCE OF CAYMAN 85' Vicem GA	17
ESSENCE OF CAYMAN 85' Vicem PORT	17
CONTACTS	18

Contact details	18
Telephones	18
Office hours	18
Address	18

SPECIFICATIONS

Basic Information

Category: Motor Yacht

Model Year: 2006

Year Built: 2006

Country: United States

Dimensions

LOA: 85' 0" (25.91m)

LWL: 82' 0" (24.99m)

Beam: 20' 8" (6.30m)

Min Draft: 6' 0" (1.83m)

MFG Length: 85' 0" (25.91m)

Speed, Capacities and Weight

Cruise Speed: 19 Kts. (22 MPH)

Max Speed: 25 Kts. (29 MPH)

Displacement: 140000 Pounds

Water Capacity: 132.086026 Gallons

Holding Tank: 79.2516156 Gallons

Fuel Capacity: 501.9268988 Gallons

Accommodations

Total Cabins: 3

Total Heads: 3

Crew Cabin: 2

Crew Heads: 1

Hull and Deck Information

Hull Material: Composite

Engine Information

Engines: 2

Manufacturer: MAN

Model: V12

Engine Type: Inboard

Fuel Type: Diesel

DETAILED INFORMATION

Overview

ESSENCE OF CAYMAN is a beautifully appointed Vicem 85' built to the highest standards in marine construction. Her elegant décor offers the best in traditional teak craftsmanship and modern appointments and equipment. ESSENCE OF CAYMAN is designed with two gorgeous salons. The upper salon has a large entry from outside. This area has several comfortable sitting areas to include a forward sitting area opposite the helm, apposing settees with coffee tables, desk, entertainment and access to a private companionway to the master stateroom. Master stateroom has a centerline king berth with a couch on the port side and a makeup table on the Starboard. Large walk in closet and vanity. The bathroom is a full beam his and hers separated by a large shower with entry from both bathrooms. Hers equipped with a bidet. ESSENCE OF CAYMAN has a lower salon with additional sitting areas, dining with access forward to the galley and crew quarters, aft in the lower salon one has access to the guest accommodations. The galley is beautifully appointed with state of the art equipment. The granite counter tops offer plenty of counter space to work on, with very generous storage throughout. The two guest staterooms are found aft through the lower salon. The two separate well-appointed (The Red room and Blue room) guest cabins are equipped with twin beds and ensuite. The aft deck is very spacious with sitting, serving area with ice maker, fridge sink and wet bar. Easy access to the water can be found from the aft deck. From the aft deck one can enter through a large entry to the upper salon.

Pilothouse

The Pilothouse is on the starboard side with a double seating area. To port is additional seating with chart area. All the instruments are flush mounted:

- Simrad CX54 chart plotter combo unit also displays depth, wind and temp
- Simrad RA51 radar
- Simrad IS 15 gauges for either logs, speed, wind or depth
- Simrad AP 25 autopilot
- Wema fuel gauges displaying fuel levels in the three fuel tanks
- Fire Boy fire system gauge
- Lenco trim tabs
- Jabsco ITT spotlight
- Bilge control switches
- Side power thruster
- Onan Generator remote controls for the generators, showing oil temp, coolant temp, volts and hrs. Also capable of starting the generators from the Wheelhouse.

Upper Salon

The Upper Salon has a large entree from outside. This area has several comfortable sitting areas to include a forward sitting area opposite the helm, adjoining settees with coffee tables, desk, entertainment and access to a private companionway to the master stateroom.

- There are two separate remote controlled glass panels between the Pilothouse from the Salon with the boat's insignia on it.
- Panasonic 37" plasma TV that doubles as a computer monitor. It is situated on the backside of the desk. It remotely stores behind the desk.
- BOSE Surround System with DVD
- GE Icemaker and sink on the opposite site

Engine Room

The engine room is very large for a vessel of her size with complete access to all equipment and 6' plus headroom. The engine room is very clean and bright with polished diamond plate flooring throughout.

- 2 MAN V12 1200 HP engines
- 2 Onan generators each producing 22.5 KW - 780 hours (September 06)
- Twin disk transmissions
- 2 Fresh water pumps, one 220v and the other 24v each with their own expansion tanks.
- 2 Racor 75100 MAX fuel filters per engine.
- 1 Racor 500 MA fuel filter per Generator
- 2 Fire boy 57.1 pound Manual/Auto fire extinguishers
- 2 Newmar "phase three" charges, engine and house batteries
- 3 fuel tanks. 2 X 3200L and the other 800 L
- Fuel transfer system for transferring fuel between the tanks, either electric or manual

Galley

The galley is beautifully appointed with state of the art stainless steel equipment. Granite counter tops with plenty counter space to work on with very generous storage throughout.

- GE Trash compactor
- GE 5 Plate stove and convection oven
- GE Dishwasher
- GE Microwave/Convection Oven
- GE Refrigerator, Freezer Combo with Icemaker, Water and Crushed Ice Dispenser
- Sharp 19" TV

Master Suite

The Master stateroom has a centerline king berth with a couch on the port side and a makeup table on the Starboard. Large walk in closet and vanity. The bathroom is a full beam his and hers separated by a large shower with entry from both bathrooms. Hers equipped with a bidet.

- Pioneer 42" Plasma TV
- Yamaha cinema station surround sound system
- Premier all region DVD player
- GE mini refrigerator

Port & Starboard Guest Cabins

The two guest staterooms are found aft through the lower salon. There are two well-appointed (The Red room and Blue room) separate guest cabins with twins and ensuite.

- Sharp 19" TV Premier all region w/ DVD player
- Ensuite with shower, toilet and basin

Crew Quarters

There are two crew cabins that share the same bathroom. The captain's cabin has a double bed with a single bunk above. The other crew cabin has two bunk beds.

Aft Lazerette

Easy access to spacious Aft Lazerette, perfect for misc. boating gear including all the air conditioning, shore power cables, transformer, compressor, water maker and extended range fuel tanks.

- Cruisair AC fitted throughout the boat
- AC transformer, can accept any voltage up to 100 Amp through two 50 Amp shore cords
- 600 GPD water maker

Aft Deck

The aft deck is very spacious with sitting, serving area with ice maker, fridge sink and wet bar. Easy access to the water can be found from the aft deck. From the aft deck one can enter through to the upper salon.

- GE Stainless steel refrigerator

- GE Icemaker
- Sink and wet bar
- Dual anchors
- The tender stores on the swim platform. The swim platform is fully hydraulic which enables the platform to submerge into the water to be able to launch and retrieve the tender.

Broker's Comments

Vicem's fine line of motor yachts have become widely known for their beauty, style and seaworthiness. Essence Of Cayman is widely known as the most impressive "Down East-style" yacht ever splashed. She was custom-built by her very knowledgeable owner, whom presently owns her, to make her fully operational on both sides of the pond. She is fully MCA-compliant, and superbly suited for private or charter anywhere in the world. Careful consideration was given to comfort of the crew and their accommodations.

The Vicem 85' Express, with her incredible design, interior appointments and workmanship, has truly achieved a "once-in-a-decade" yacht.

Remarks

NOT OFFERED FOR SALE OR CHARTER TO U.S. CITIZENS/RESIDENTS WHILE IN U.S. WATERS

Exclusions

Owner's personal belongings.

Disclaimer

The Company offers the details of this vessel or yacht in good faith but cannot guarantee or warrant the accuracy of this information nor warrant the condition of the vessel. A buyer should instruct his representatives, agents, or his surveyors, to investigate such details as the buyer desires validated. This vessel or yacht is offered subject to prior sale, price change, or withdrawal without notice.

PHOTOS

SALON



SALON



SALON



SALON



SALON



HELM



NAV DESK



MAIN DECK



MAIN DECK

MAIN DECK



MAIN DECK



STAIRS



MASTER



MASTER HEAD



GUEST CABIN



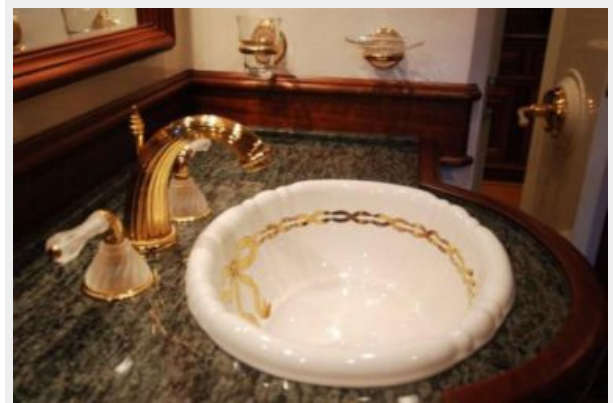
HEAD



HEAD SINK



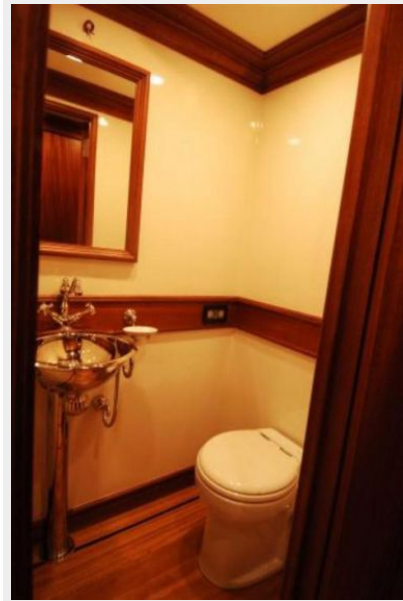
HEAD SINK



GUEST



HEAD



LOWER SALON



LOWER SALON



LOWER SALON



DINING



ESSENCE OF CAYMAN 85' Vicem GALLEY



ENGINE ROOM



ENGINE ROOM



TRANSOM



ESSENCE OF CAYMAN 85' Vicem Aerial



ESSENCE OF CAYMAN 85' Vicem STARBOARD



ESSENCE OF CAYMAN 85' Vicem GA

ESSENCE OF CAYMAN 85' Vicem PORT



CONTACTS

Andrey Shestakov, leading yacht broker of the sales department of Shestakov Yacht Sales Inc. Shestakov Yacht Sales Inc., the official representative of the Miami/Fort Lauderdale FL headquarters.

Contact details

Email: andrey@shestakovyachtsales.com

Web: shestakovyachtsales.com/en/

Telephones

USA: +1(954)274-4435

Office hours

Monday – Saturday: **9:00 - 21:00** EDT

Sunday: **closed**

Address



Harbour Towne Marina, 850 NE 3rd St,
STE 213, Dania, FL 33004