

## NEVER QUIT — HARGRAVE



**Судостроитель:** HARGRAVE

**Год постройки:** 2006

**Модель:** Моторная яхта

**Цена:** **ЦЕНА ЯХТЫ ПО ЗАПРОСУ**

**Местонахождение:** United States

**Длина общая:** 78' 5" (23.90m)

**Ширина:** 21' 0" (6.40m)

**Мин. осадка:** 5' 10" (1.78m)

**Макс. осадка:** 5' 10" (1.78m)

**Крейс. скорость:** 20 Kts. (23 MPH)

**Макс. скорость:** 24 Kts. (28 MPH)

Купить **Never Quit — HARGRAVE** а также выбрать подходящую вам яхту из нашего каталога яхт вам поможет опытный яхтенный брокер Андрей Шестаков. На сегодняшний день компания **Shestakov Yacht Sales Inc.** имеет большое количество яхт в собственном списке продаж, а также тесно сотрудничает со всеми крупными яхтенными производителями по всему миру.

Для того чтобы купить яхту **Never Quit — HARGRAVE** а также проконсультироваться по любому вопросу связанному с покупкой, продажей, чартером яхт позвоните по телефону **+7(918)465-66-44**.

# ОГЛАВЛЕНИЕ

---

ОГЛАВЛЕНИЕ	2
ХАРАКТЕРИСТИКИ	6
Обзор	6
Основная информация	6
Размеры	6
Скорость, вместимость и масса	7
Размещение	7
Корпус и палуба	7
Информация о двигателе	8
ПОДРОБНОЕ ОПИСАНИЕ	9
Vessel Walkthrough Overview	9
Salon	9
Galley/Helm Area	10
Aft deck	10
Fly Bridge	10
Sun Deck	11
Master Stateroom	11
VIP Stateroom	11
Guest Stateroom 1	11
Guest Stateroom 2	11
Crew Quarters	12
Electronics	12
Television and Audio Equipment	13
Equipment List	13
Electrical System	14
Deck Equipment	14
Remarks	15
Exclusions	15

Disclaimer	15
Исключения	15
Отказ от ответственности	15
ФОТОГРАФИИ	17
Aft deck	17
Aft Deck	17
Aft Deck	17
Upper Deck	17
Upper Deck	17
Upper Bar	17
Upper Helm	18
Upper Helm	18
Upper Deck	18
Hot Tub	18
Upper Deck	18
Upper Deck	18
Upper Deck	19
Hard Top	19
BOW	19
BOW	19
Starboard side walk arounds	20
Port Side walk arounds	20
Salon	20
Salon	20
Salon	20
Galley	20
Galley	21
Dinette	21
Lower Helm	21

---

Master Stateroom	21
Master	21
Master	21
Master Bath His and Hers	22
Master Bath His and Hers	22
Master Bath His and Hers	22
Hallway	22
VIP	23
VIP	23
Guest Stateroom	23
VIP Bath	23
Twin Guest	23
Twin Guest Bath	23
Bunk Room	24
Bunk Room	24
Guest Bath and Day Head	24
Stern View TNT Lift	24
Crew Bath	25
Crew Stateroom	25
Crew Galley	25
Engine Room Entrance	25
Engine Room	26
Engine Room	26
Profile	26
Profile	26
Sunset	26
Bahamas	26
Vessel Layout	27
КОНТАКТЫ	28

---

---

Контактная информация	28
Телефоны	28
Время работы	28
Адрес	28

# ХАРАКТЕРИСТИКИ

## Обзор

This is the perfect quality yacht for extended cruising in southern waters. Full walk around side decks. Large TNT swim/dive platform. Custom built flybridge Hard Top for extra visibility, Air conditioned flybridge. Open Floor Plan great entertaining, 4 Staterooms with ensuite heads, plus crew quarters aft. Twin CAT C-32 with 5 year CAT Platinum Engine Extended Warranties gives 20 knot cruise, no expense was spared in maintaining this vessel. Located in Fort Lauderdale, FL and a must see for your clients! Full CAT Platinum Engine warranties until 10/16/2016

Quality Sport Fish Trades Considered

## Основная информация

<b>Тип судна:</b> Моторная яхта	<b>Подкатегория:</b> Flybridge
<b>Модельный год:</b> 2007	<b>Год постройки:</b> 2006
<b>Страна:</b> United States	<b>Верх:</b> 2363
<b>Открытая палуба мостика:</b> Да	

## Размеры

<b>Длина общая:</b> 78' 5" (23.90m)	<b>Длина по ватерлинии:</b> 72' 6" (22.10m)
<b>Ширина:</b> 21' 0" (6.40m)	<b>Мин. осадка:</b> 5' 10" (1.78m)
<b>Макс. осадка:</b> 5' 10" (1.78m)	<b>Трапы:</b> 38' 0" (11.58m)
<b>Длина привального бруса:</b> 78' 0" (23.77m)	

## Скорость, вместимость и масса

---

**Крейс. скорость:** 20 Kts. (23 MPH)

**Крейсерская скорость поворота:** 2050 Kts.

**Макс. скорость:** 24 Kts. (28 MPH)

**Макс. скорость поворота:** 2300 Kts.

**Водоизмещение:** 171960.56436 Pounds

**Вместимость воды:** 600 Gallons

**Вместимость сточного бака:** 125 Gallons

**Объем топливного бака:** 2200 Gallons

## Размещение

---

**Всего кают:** 4

**Всего коек:** 8

**Спальные места:** 8

**Всего ком. состава:** 4

**Каюты экипажа:** 1

**Койки экипажа:** 2

**Спальных мест экипажа:** 2

**Комм. состав экипажа:** 1

## Корпус и палуба

---

**Материал корпуса:** Composite Fiberglass

**Материал палубы:** Fiberglass

**Комплектация корпуса:** Semi-Displacement

**Цвет корпуса:** White

**Отделка корпуса:** Stainless Steel

**Дизайнер корпуса:** JB Hargrave

**Дизайнер экстерьера:** JB Hargrave

**Дизайнер интерьера:** YAcht Interiors by Shelley

---

## Информация о двигателе

---

**Двигатели:** 2

**Производитель:** Caterpillar

**Модель:** C-32

**Тип двигателя:** Inboard

**Тип топлива:** Diesel



# ПОДРОБНОЕ ОПИСАНИЕ

## Vessel Walkthrough Overview

Entering the salon from the aft deck one gets a sense of open space. There is an easy chair with ottoman to port along with two sofas and tables. To starboard are two chairs, entertainment center and storage cabinets. Forward to port is the U-shaped galley with granite counter tops. To starboard, a is a large granite countertop with Sub Zero refridgerators and freezers below. Forward of the galley to port is a casual dining area . In the center is a helm station. To starboard is a staircase from the lower control station which leads to the flybridge with a upper helm. The fly bridge hard top has clear panels that can be dropped into place to make an air-conditioned enclosure. On the next level aft is the master stateroom with a king size bed that can be made into two large twins, his-and-hers baths sharing a shower enclosure on centerline. There is a twin guest cabin to to port, a second guest cabin with T-bunks to starboard each with a private head and shower. All the way forward, is an enclosed VIP stateroom with private head and large shower. There is a crew quarters for two located aft on the lower deck with access through a watertight transom door.

## Salon

The Salon feels wider than Never Quit's actual 21 ft. beam. The entire main deck interior is a large open, well-lit, very spacious area giving this yacht a much larger feel. Many have commented that the interior of Never Quit seems more like that of a yacht 20 feet longer.

Entering from the spacious aft deck, the entire salon is a large conversation area with tasteful, custom built leather furniture. there are two large comfortable couches and 2 leather chairs.

Across from the leather couch is a custom entertainment center with a 42-inch high definition plasma TV that drops down into the side panel when not in use. The carpet is light. The wood throughout the yacht is satin finished Mozambique Mahogany. On the main deck there is an abundance of natural lighting via the 14 very large windows. All of the windows and portholes in the yacht have custom built wooden blinds. This yacht has a wonderful, comfortable "feel" about it. The interior design is tastefully contemporary.

### Audio Visual

### Equipment for Main Salon

Sony SA1ES Surround Sound Receiver	Inca TV Lift w/ 42" Plasma LG HD TV
Sony NC655PB 5-Disc DVD/CD Player	Direct TV D10 DSS Satellite Receiver x 2 mounted
CE Labs Theater 2002SD Modulator	Denon AUR-3805 A/V Surround Receiver
5 Craft speakers	I-Pod Docking Stations x 2
M&K Sound KX10 Subwoofer	Crestron AV2 Control System mounted
Crestron 3.8" Wireless Touch Panel	Crestron 418MHZ RF Gateway

## Galley/Helm Area

Forward of the salon is the large functional galley, containing the latest in appliances and refrigeration. The galley has more than ample space on its counter tops for food preparation. The countertops are granite and compliment the wood nicely. Forward of the Galley to port and adjacent to the master helm is another casual dining area with seating for 8. The helm has a Stidd captain's chair and an impressive array of the latest electronics. See the electronic list at end of listing To starboard of the helm is entry to the side deck and also has a second stairway to access the flybridge and upper control station.

### All Stainless Steel Galley

#### Appliances include:

2 x Sub-Zero Wood Panel Refrigerator 2 Sub-Zero Wood Panel Freezers  
 Boran Down-Draft Exhaust Fan GE Trash Compactor- GE G Disposal  
 Fisher & Paykel Dishwasher Combo Oven, Microwave Drawer  
 U-Line Wood Panel Wine Cooler

## Aft deck

The covered aft deck area easily seats 8 people for alfresco dining. The teak decks add warmth and nautical atmosphere to this area of the yacht. To port, there is a stairway leading to the flybridge and sun bathing area. At each side of the large aft deck settee, are stairways port and starboard leading to the large swim platform and the main entrance to the crew quarters. **Audi/Visual Aft Deck** Sharp 32" LCD Display LSE 30" Fold Down Ceiling Mount w/ Quiet Motor Poly-Planar MA 6800 Round Speakers x 4 Crestron 12 Button Decorator Function Keypad **Upper Aft Deck** Stainless steel BBQ

## Fly Bridge

When one first enters the flybridge they are impressed with the sheer amount of space it encompasses and how efficiently it is utilized. The area is fully air conditioned. It is reminiscent of yachts in a much larger class. It is ideal for southern climates in the heat of the day. The flybridge is enclosed with lsglass which can easily be opened to allow free flow of air in good weather. Behind the fly-bridge control station and to starboard, there is a large settee (storage under) that provides dining for 8 guests. Across from this to port is a large fully equipped bar. There is a refrigerator, drawers, icemaker and sink behind the bar. There is also an IPOD and FM radio through the Crestron 12 button keypad on the helm. There is a stainless steel ladder to topside of upper helm, which fits over the jacuzzi/spa cover. One notices the custom hardtop and mast are designed to allow more visibility then what is found in most yachts.

---

## Sun Deck

---

Moving aft of the isinglass enclosed fly-bridge area is the sunning area complete with a large sun pad alongside a Jacuzzi for 6. Further aft there is space for 3 full-length lounging chairs. Note that this area could also be used to store the tender if one were to add a davit. The deck has been reinforced for this purpose. The tender is stored below on a custom TNT lift which also functions as part of the swim platform. **Sound:** IPOD and FM radio through upper helm keypad 3 x Poly-Planar MA6800 Round Speakers with their own volume control on aft deck

---

## Master Stateroom

---

The master stateroom has a king size berth that can easily be converted to 2 single beds as depicted in the photos. It has his and hers heads with a large glass shower area connecting the two. It has separate vanity and ample storage. The master has a TV which electronically folds down from the ceiling so it is out of the way when not in use. **Audio/Visual equipment for Master** Cybettone Single Disk Player DVD/CD 32" TV Recessed into ceiling Sharp 32" LCD Display Kramer 903 Mini-Amplifier Speaker Craft CRS Two-Speaker Pair Extron MLS 103 V Composite Video Switcher Crestron Mini LCD Handheld Remote Crestron 418MHZ RF Gateway DVD player

Direct TV receiver

---

## VIP Stateroom

---

At the forward end of the passage way is the VIP stateroom which includes a queen sized berth, a head with separate shower and fold down flat screen TV.. **Audio Visual Equipment for VIP** LG 17" HD/WXGA LCD Display 17" Fold Down TV Cyber Home Multi-Region DVD Player Kramer 903 Mini-Amplifier mounted Speaker Craft CRS Two Speaker Pair Extron MLS 103 V Composite Video Switcher Crestron Mini LCD Handheld Remote Direct TV receiver

---

## Guest Stateroom 1

---

Off the main passageway below is a guest state room with twin berths, fold down TV and ensuite head with separate shower. **Audio/visual** 17" TV Recessed into ceiling of port & Starboard Guest Staterooms Cyber Home Multi-Region DVD Player mounted in both Guest Staterooms Speaker Craft CRS Two Speaker Pair mounted in both Guest Staterooms Crestron 418Mhz RF Gateway mounted in both Guest Staterooms

---

## Guest Stateroom 2

---

Off the main passage way is the 3rd guest state room with over/under T berths. This state room

also has its own private head with separate shower. **Audio/visual** 2) 17" TV Recessed into ceiling of port & Starboard Guest Staterooms Cyber Home Multi-Region DVD Player mounted in both Guest Staterooms Speaker Craft CRS Two Speaker Pair mounted in both Guest Staterooms Crestron 418Mhz RF Gateway mounted in both Guest Staterooms

## Crew Quarters

The crew quarters for two is located aft on the lower deck with access through a watertight transom door off the swim platform. There is a crew refrigerator and microwave. **Audio/Visual** Cyber Home Multi-Region DVD Player Kramer 903 Mini-Amplifier Speaker Craft CRS Two Speaker Pair Russound R2D RCA Input Jacks Decora Plate Extron MLS 103 V Composite Video Switcher

## Electronics

Extron VSC500 Video Scan Converter	Furuno 1954 Black Box w/6' Ant Radar
Furuno BBFF1 Dual Frequency BB Sounder	Furuno FA100 AIS System
Furuno GP1920 CNT Chart Plotter	Furuno MU120C 12" Color LCD Display x 2 in Upper Helm
Furuno SC50 Satellite GPS Compass	LG 19" LCD Display x 3 in Lower Helm
V.E.I. Computer Keypad	Versapoint Interlink Keypad
Valhalla New Marci Ens Chart Plotter x 2	Furuno RD-30 Remote Data Display x 8
Aimar BR Echo Correlation Speed Sensor	C & F 200W Xenon 13.5 Candlepower Search Light
Newmar 32-12-50A Amp CD 24V to DC 12V Converter for Stereo & Navigation Systems	Standard Matrix Black DSC/VHF Radios mounted at main helm
Standard RAM + Mike x 2 Lower Helm & Crew Cabin	Standard Matrix Black DSC/VHF Radio mounted @ Flybridge
Standard RAM + Mike x 2 Lower Helm & Crew Cabin	Amplidan Commander 1500 MK V System- Intercom System at main helm & engine room
Panasonic phone and intercom system	Digital Wireless Cellular Repeater/Amplifier
SeaTel WaveCall F33 System	SeaTel 27" Empty 2498 Dome
Dome IHubbell Phone /TV Outlet	Hula Point Remote Mouse
IDT Interlink Remote Point RF Combo Kybd/Track	Seatel 2498S 24" DVB Sat TV System
Panasonic Unitized with Presets Color Camera mounted on Aft Deck	2 round speakers in upper deck area
Color Camera mounted on Aft Dec	

## Television and Audio Equipment

**Main Salon** Sony SA1ES Surround Sound Receiver in Main Salon High/Low Inca Television Lift in Main Salon LG 42" Plasma Display mounted in Main Salon Sony NC655PB 5-Disc DVD/CD Player in Main Salon Denon DUM-1845-Disc DVD/CD mounted in Main Salon Direct TV D10 DSS Satellite Receiver x 3 mounted in Main Salon CE Labs Theater 2002SD Modulator mounted in Main Salon Denon AUR-3805 A/V Surround Receiver mounted in Main Salon Speaker Craft AIM 8 Speaker Pairs x 5 mounted in Main Salon Marantz I-Pod Docking Stations x 2 in Main Salon M&K Sound KX10 Subwoofer mounted in Main Salon Crestron AV2 Control System mounted in Main Salon Crestron 3.8" Wireless Touch Panel mounted in Main Salon Crestron 418MHZ RF Gateway mounted in Main Salon

**Master Stateroom** Cybettone Single Disk Player DVD/CD in Master Stateroom 32" TV Recessed into ceiling of Master Stateroom Sharp 32" LCD Display mounted in Master Stateroom Kramer 903 Mini-Amplifer mounted in Master Stateroom Speaker Craft CRS Two-Speaker Pair mounted in Master Stateroom Extron MLS 103 V Composite Video Switcher mounted in Master Stateroom Crestron Mini LCD Handheld Remote Mounted in Master Stateroom Crestron 418MHZ RF Gateway mounted in Master Stateroom

**VIP Stateroom** LG 17" HD/WXGA LCD Display mounted in VIP Stateroom 17" Fold Down TV mounted in VIP Stateroom Cyber Home Multi-Region DVD Player mounted in VIP Stateroom Kramer 903 Mini-Amplifier mounted in VIP Stateroom Speaker Craft CRS Two Speaker Pair mounted in VIP Stateroom Extron MLS 103 V Composite Video Switcher mounted in VIP Stateroom Crestron Mini LCD Handheld Remote mounted in VIP Stateroom

**Guest Staterooms (2)** 17" TV Recessed into ceiling of port & Starboard Guest Staterooms Cyber Home Multi-Region DVD Player x 2 mounted in both Guest Staterooms Speaker Craft CRS Two Speaker Pair x 2 mounted in both Guest Staterooms Crestron 418Mhz RF Gateway x 2 mounted in both Guest Staterooms

**Aft Deck** Sharp 32" LCD Display mounted @ Aft Deck LSE 30" Fold Down Ceiling Mount w/Quiet Motor mounted @ Aft Deck Poly-Planar MA 6800 Round Speakers x 2 mounted @Aft Deck Crestron 12 Button Decorator Function Keypad mounted @ Aft Deck

**Fly Bridge** Poly-Planar MA6800 Round Speakers mounted @ Flybridge Terk Marine XM Antenna Terk Marine XM Extension Cable

**Crew Quarters** LG 17" HD/WXGA LCD Display x 2 mounted in Crew Quarters 17" LCD Display for Crew Quarters Cyber Home Multi-Region DVD Player mounted in Crew Quarters Kramer 903 Mini-Amplifier mounted in Crew Quarters Speaker Craft CRS Two Speaker Pair mounted in Crew Quarters Russound R2D RCA Input Jacks Decora Plate mounted in Crew Quarters Extron MLS 103 V Composite Video Switcher mounted in Crew Quarters Crestron Mini LCD Handheld Remote mounted in Crew Quarters

## Equipment List

**Main Engines** Twin CAT C-32 with 5 year CAT Platinum Engine Extended Warranties

**Sea Recovery 1200 GPD watermaker**

**Air Conditioning** Cruiseair A/C and Heating System (1) 24000 BTU in Salon (2) 16000 BTU in Galley and Pilothouse (2) 12000 BTU in Master Reverse Cycle Units (3) 7000 BTU & Crusair

VIP & 2 Twins (4) 44000 BTU with Blower on Flybridge **Hydraulic System** Naiad Stabilizer System Model 254 with 9 sq. ft. fins with multi 2000 and Naiad Fairing Block Naiad HPS Stern Thruster 10HT 25HP with Single Reservoir Tank Hydraulic Bow Thruster HPS-36 hp Double Stabilizer & Bow Thruster backup water pump off starboard main engine Hydraulic steering by Hynautic, interfaced with auto-pilot **Misc** Glendining engine controls with dual fixed stations & remote hardwired 60' extension Interceptor plates Double Racor filters on both engines Seafire Extinguishing System with manual pull in Crew cabin Smoke detection and alarm system with heat detection in galley & engine room Reverso oil change system (5) Headhunter heads with 2 Mach 5 110 pumps Fill-rite #901-1.5 flow meter with Oberdorfer fuel transfer pump 2 Torrid 30 gal. hot water tanks 125 gal. black water holding tank with indicator at helm station Kahlenberg air horn Safety rails around twin engines

**Custom work bench in engine room** over transmission and (2) over generators 2nd layer of insulation between engine room and master stateroom Fresh water filling faucet in engine room Fire suppression system in engine room Remote alarms for high water & bilge pump- master stateroom, crew and guest staterooms. Engine Alarm System for low pressure & high temperature (4) Jabsco engine compartment blowers 24v lights and 110v power receptacles in engine room (4 each) Groco Seastrainer- single strainer, 4' tall Sea Chest - all raw water seacocks enter through sea chest (4) Lovett sump pumps Y-valve for dockside pump out Tide strong marine driplless shaft logs Tide Seal driplless rudders In-Line recirculation hot water pump 3-1/2" stainless steel shafts (2) Sets of 4 Blade bronze propellers Main bronze struts Stainless steel rudders Custom underwater engine exhaust with idle by-pass Under water lights- 6 aft & 2 forward

## Electrical System

**Twin 27.5 kw Onan generators:** Port 3900 hours, Starboard 1536 hours on May 29, 2014 220v, 110v and 60Hz Electrical System (8) 200 amp/hr batteries for engines and ship's power 2 Separate 120 amp/hr batteries for generator Main electrical panel with separate AC Power control and circuit breaker panel (2) 100 AMP Galvanic Isolators, Acme Transformers (5) Dolphin battery chargers (2) 100 amp Sentry/Dolphin AC/DC light transformer 110/24v Newmar converter 50A 24v/12v

## Deck Equipment

Isinglass enclosure for hard top on fly bridge Teak swim platform TNT lift and removable chocks at transom (2) 6 man offshore life rafts Marquipt Sea Stairs with handrails EPRIB Brownies LP Marine Compressor Yacht Pro 45 with manifold, boat hookah system 3-diver reef package Brownies HP Dive Compressor, dual filling station to aft deck (5) Aluminum dive tanks & holders Stainless steel 316 plow anchor (100 lb.) with 275' chain Nilsson V3500 24volt windless Large storage areas on forward deck TV/Telephone inlet Fresh water washdown in (4) locations- bow/aft deck/fly bridge/engine room Windshield wipers with blades American Whirlpool Chicago Yacht Spa with air channel and insulated cover (2) 3" X 16' FRP pipes for engine room water

discharge through transom (20) Exterior watertight lights at deck house outside (8) Exterior waterproof lights on bow (8) Underwater lights, 6 on stern, 2 on bow Aft deck storage for Marquipt ladder Settee with teak foot rail on port side of fly bridge Removable "U" shape hand rails on boat deck Aritex watertight door with backlit nameplate in engine room Life jackets, fenders, fire extinguishers, dock lines and flares (2) Stidd captain's helm chairs

---

## Remarks

---

Never Quit is one of the most innovative custom designed Hargrave yachts ever built. It is the owner's third custom built yacht and it is easy to see that the ideas from his vast yachting experience have been incorporated into the design and functionality of this yacht. After many years of owning much larger yachts the owner wanted to downsize for a while, therefore the yacht was designed to be run with a minimal amount of crew. Never Quit is the result. Never Quit has been maintained to the highest standards. 10. The yacht comes with full-extended factory transferable warranties on engines and generators. The warranties on the main engines are valid until 2016 and can be extended past that date if desired. This is a must see yacht and sets the bar when comparing other yachts in its class. You will have to look far and wide to find a yacht with this much value. Never Quit has a serious seller who has priced her to sell!

Here is a link to a video tour: Watch

---

## Exclusions

---

Owner's personal effects, art work, and statues. A detailed list is available prior to any written offer.

---

## Disclaimer

---

The Company offers the details of this vessel in good faith but cannot guarantee or warrant the accuracy of this information nor warrant the condition of the vessel. A buyer should instruct his agents, or his surveyors, to investigate such details as the buyer desires validated. This vessel is offered subject to prior sale, price change, or withdrawal without notice.

---

## Исключения

---

При продаже яхты исключаются личные вещи владельца.

---

## Отказ от ответственности

---

Компания предоставляет описание судна или яхты добросовестно, но не может гарантировать точность этой информации, а также не ручается за техническое

состояние. Покупатель должен проинструктировать своих агентов или оценщиков исследовать представленную информацию более подробно, по собственному желанию. Продажа судна или яхты, изменение цены или снятие с продажи будет происходить без предварительного уведомления.



# ФОТОГРАФИИ

**Aft deck**



**Aft Deck**



**Aft Deck**



**Upper Deck**



**Upper Deck**



**Upper Bar**



Upper Helm



Upper Helm



Hot Tub



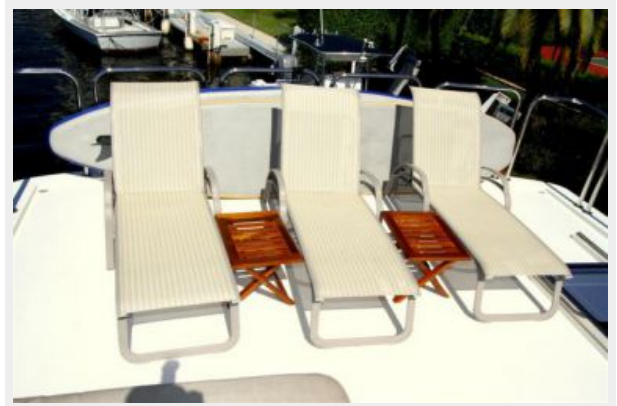
Upper Deck



Upper Deck



Upper Deck



**Upper Deck**



**Hard Top**



**BOW**



**BOW**



### Starboard side walk arounds



### Port Side walk arounds



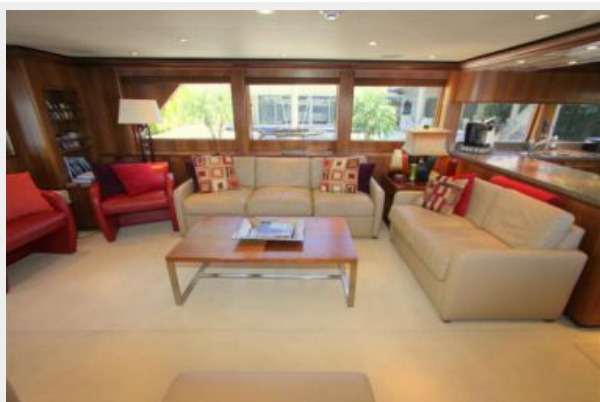
### Salon



### Salon



### Salon



### Galley



**Galley**



**Dinette**



**Lower Helm**



**Master Stateroom**



**Master**



**Master**



### Master Bath His and Hers

### Master Bath His and Hers



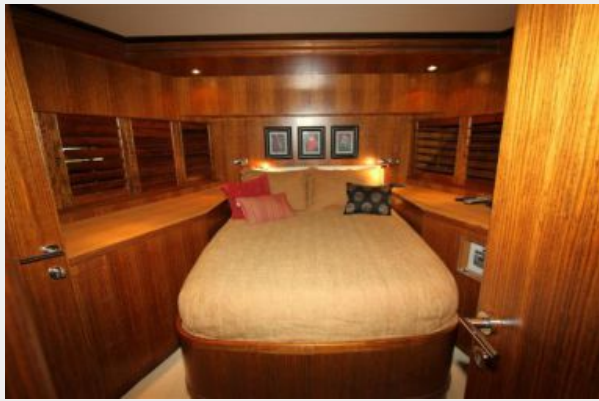
### Master Bath His and Hers



### Hallway



VIP



VIP



VIP Bath



Guest Stateroom



Twin Guest



Twin Guest Bath



**Bunk Room**



**Bunk Room**



**Guest Bath and Day Head**



**Stern View TNT Lift**





**Crew Stateroom**



**Crew Bath**



**Crew Galley**



**Engine Room Entrance**



**Engine Room**



**Engine Room**



**Profile**



**Profile**



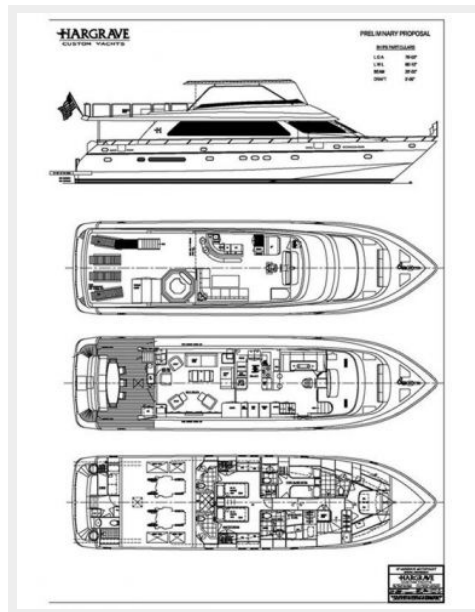
**Sunset**



**Bahamas**



## Vessel Layout



# КОНТАКТЫ

---

Андрей Шестаков (Andrey Shestakov) – ведущий яхтенный брокер отдела продаж яхт и судов компании Shestakov Yacht Sales Inc. Официальный представитель Shestakov Yacht Sales Inc. для русскоговорящих клиентов в центральном офисе компании в Майами/Форт Лодердейл/Флорида/США.

## Контактная информация

---

Email: [andrey@shestakovyachtsales.com](mailto:andrey@shestakovyachtsales.com)

Web: [shestakovyachtsales.com](http://shestakovyachtsales.com)

## Телефоны

---

Краснодарский край: **+7(918)465-66-44**

США, Майами, Флорида: **+1(954)274-4435**

## Время работы

---

Понедельник – Суббота: **9:00 - 21:00**  
EDT

Воскресенье: **Закрито**

## Адрес

---



Harbour Towne Marina, 850 NE 3rd St,  
STE 213, Dania, FL 33004