

54' BERTRAM 54 CONVERTIBLE 3 CABIN LA — BERTRAM



Builder: BERTRAM

Year Built: 1987

Model: Sport Fisherman

Price: PRICE ON APPLICATION

Location: Puerto Rico

LOA: 54' 0" (16.46m)

Beam: 16' 11" (5.16m)

Max Draft: 5' 2" (1.57m)

Our experienced yacht broker, Andrey Shestakov, will help you choose and buy a yacht that best suits your needs 54' Bertram 54 Convertible 3 Cabin layout 1987 — BERTRAM from our catalogue. Presently, at Shestakov Yacht Sales Inc., we have a wide variety of yachts available on our sale's list. We also work in close contact with all the big yacht manufacturers from all over the world.

If you would like to buy a yacht 54' Bertram 54 Convertible 3 Cabin layout 1987 — BERTRAM or would like help answering any questions concerning purchasing, selling or chartering a yacht, please call +1(954)274-4435

TABLE OF CONTENTS

TABLE OF CONTENTS	2
SPECIFICATIONS	4
Overview	4
Basic Information	4
Dimensions	4
Speed, Capacities and Weight	4
Accommodations	5
Hull and Deck Information	5
Engine Information	5
PHOTOS	6
Profile	6
Aft View	6
Fwd View	6
Flybridge	7
Pop Up Instruments	7
Fwd flybridge	7
Fishing Station	8
Cockpit	9
Salon	9
Setee	10
Setee	10
Dining	10
Salon	10
Galley	11
Galley	11
Cabin access	12
Guest Cabin	12
Master Cabin	12

Master Cabin	13
VIP Cabin	13
Master	13
Head	14
Cabin access looking aft	15
Layout	17
CONTACTS	18
Contact details	18
Telephones	18
Office hours	18
Address	18

SPECIFICATIONS

Overview

Introduced in 1981, the Bertram 54 had deep forward sections, a shallow keel and a more efficient 17-degree dead rise at the transom. This form blended perfectly with her stout 75,000-pound displacement and many anglers considered the 54 one of the best "sea boats" ever designed.

This yacht is a great example of another 54 whose owner complimented the factory's design with a recent refit including a awesome interior and custom pop up electronics console. Definitely a RARE opportunity. His attention to detail and maintenance makes her an exceptional value in today's market. Be sure to see this before making your next purchase. You need to compare this to any other yacht.

12V92's with low hours and recent MOH

This is a family boat and very lightly fished.

DYSID:2476176

Basic Information

Category: Sport Fisherman

Model Year: 1987

Year Built: 1987

Country: Puerto Rico

Dimensions

LOA: 54' 0" (16.46m)

Beam: 16' 11" (5.16m)

Max Draft: 5' 2" (1.57m)

Speed, Capacities and Weight

Water Capacity: 250 Gallons

Fuel Capacity: 1400 Gallons

Accommodations

Total Cabins: 3

Total Berths: 5

Hull and Deck Information

Hull Material: Fiberglass

Engine Information

Engines: 2

Manufacturer: Detroit Diesel

Engine Type: Inboard

Fuel Type: Diesel

PHOTOS

Profile



Aft View



Fwd View



Flybridge

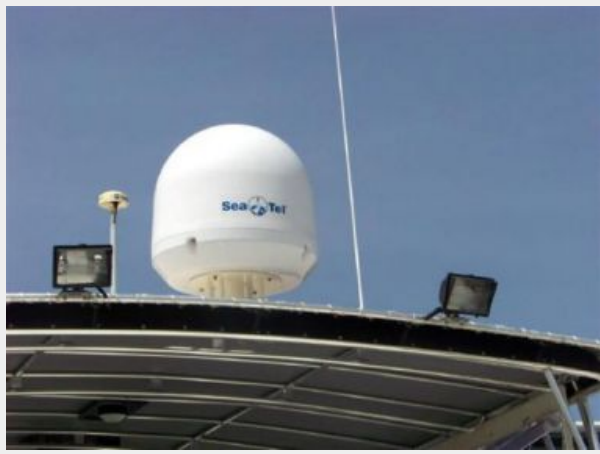


Pop Up Instruments



Fwd flybridge





Fishing Station



Cockpit



Salon



Setee



Setee



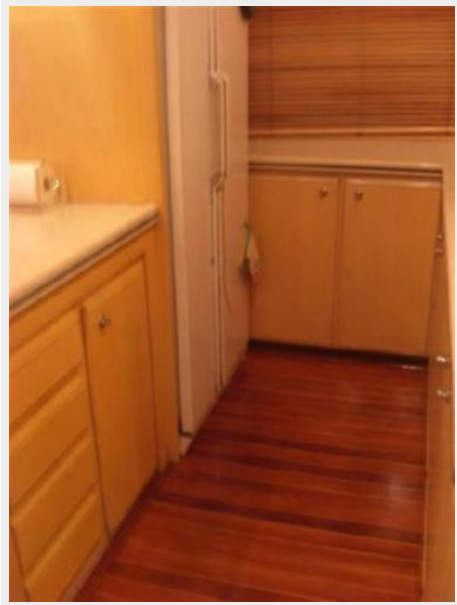
Dining



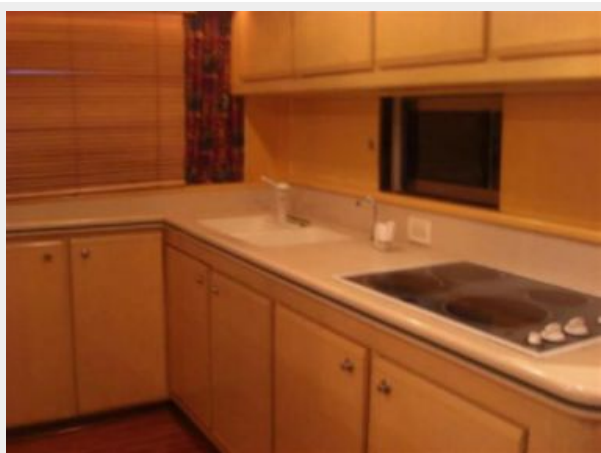
Salon



Galley



Galley



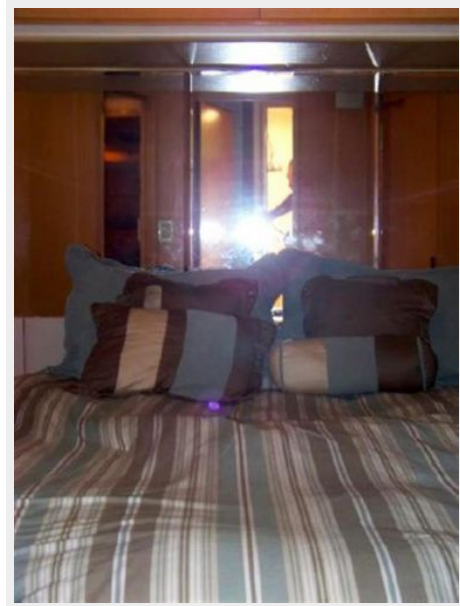
Cabin access



Guest Cabin



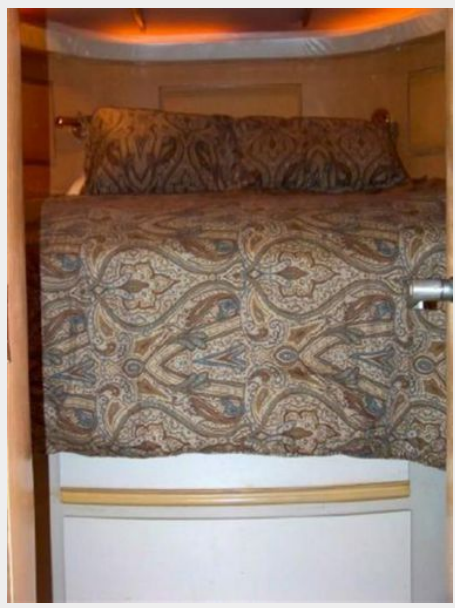
Master Cabin



Master Cabin



VIP Cabin



Master



Head



Cabin access looking aft





Layout



CONTACTS

Andrey Shestakov, leading yacht broker of the sales department of Shestakov Yacht Sales Inc. Shestakov Yacht Sales Inc., the official representative of the Miami/Fort Lauderdale FL headquarters.

Contact details

Email: andrey@shestakovyachtsales.com

Web: shestakovyachtsales.com/en/

Telephones

USA: +1(954)274-4435

Office hours

Monday – Saturday: **9:00 - 21:00** EDT

Sunday: **closed**

Address



Harbour Towne Marina, 850 NE 3rd St,
STE 213, Dania, FL 33004