

GIADEMA — FIART MARE



Builder: FIART MARE

Year Built: 2003

Model: Motor Yacht

Price: PRICE ON APPLICATION

Location: Italy

LOA: 50' 11" (15.50m)

Beam: 14' 2" (4.30m)

Min Draft: 2' 10" (0.86m)

Max Draft: 3' 6" (1.05m)

Cruise Speed: 28 Kts. (32 MPH)

Max Speed: 34 Kts. (39 MPH)

Our experienced yacht broker, Andrey Shestakov, will help you choose and buy a yacht that best suits your needs **GIADEMA — FIART MARE** from our catalogue. Presently, at Shestakov Yacht Sales Inc., we have a wide variety of yachts available on our sale's list. We also work in close contact with all the big yacht manufacturers from all over the world.

If you would like to buy a yacht **GIADEMA — FIART MARE** or would like help answering any questions concerning purchasing, selling or chartering a yacht, please call **+1(954)274-4435**

TABLE OF CONTENTS

TABLE OF CONTENTS	2
SPECIFICATIONS	3
Overview	3
Basic Information	3
Dimensions	3
Speed, Capacities and Weight	3
Accommodations	3
Hull and Deck Information	4
Engine Information	4
DETAILED INFORMATION	5
Deck Equipment	5
Electrical System	5
Electronics and Navigational Equipment	5
Exclusions	5
Disclaimer	5
PHOTOS	6
CONTACTS	9
Contact details	9
Telephones	9
Office hours	9
Address	9

SPECIFICATIONS

Overview

PLEASE BRING OFFERS - YACHT IS KEENLY FOR SALE

Basic Information

Category: Motor Yacht

Sub Category: Fast

Model Year: 2003

Year Built: 2003

Country: Italy

Vessel Top: Bimini Top

Dimensions

LOA: 50' 11" (15.50m)

Beam: 14' 2" (4.30m)

Min Draft: 2' 10" (0.86m)

Max Draft: 3' 6" (1.05m)

Speed, Capacities and Weight

Cruise Speed: 28 Kts. (32 MPH)

Max Speed: 34 Kts. (39 MPH)

Water Capacity: 158.5032312 Gallons

Fuel Capacity: 528.344104 Gallons

Accommodations

Total Cabins: 3

Total Berths: 6

Total Heads: 2

Hull and Deck Information

Hull Material: Fiberglass

Deck Material: Fiberglass

Hull Configuration: Modified V-Hull

Hull Finish: Inox

Engine Information

Engines: 2

Manufacturer: Volvo Penta

Engine Type: Inboard

Fuel Type: Diesel

DETAILED INFORMATION

Deck Equipment

Bow thruster, Electric bilge pump (3), Manual bilge pump, Automatic battery charger, Air conditioning, Heating, Hot water, Fresh water maker, Sea water pump, Microwave oven, Electric head, Refrigerators (2), Deep freezer, Teak cockpit, Hydraulic gangway, Cockpit cushions, Cockpit table, Swimming ladder, Cockpit shower, Radar reflector, Tender + ob Liferaft, Electric windlass, Cockpit cover

Electrical System

Shore power inlet, Generator 6,5 Mase diesel Electrical Circuit: 220V- 24V- 12V

Electronics and Navigational Equipment

Depthsounder, Log-speedometer, Radar, Plotter, Autopilot, Compass, GPS, VHF, TV set, DVD player, Radio CD player Cockpit speakers.

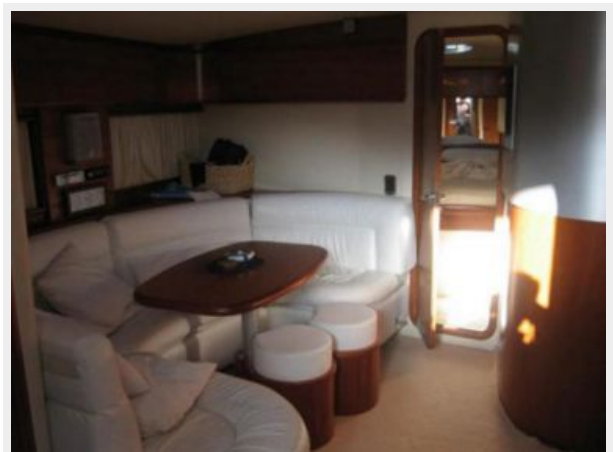
Exclusions

Owner's personal belongings.

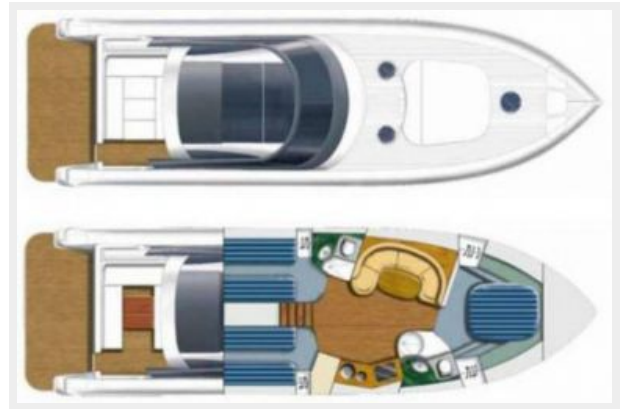
Disclaimer

The Company offers the details of this vessel or yacht in good faith but cannot guarantee or warrant the accuracy of this information nor warrant the condition of the vessel. A buyer should instruct his representatives, agents, or his surveyors, to investigate such details as the buyer desires validated. This vessel or yacht is offered subject to prior sale, price change, or withdrawal without notice.

PHOTOS







CONTACTS

Andrey Shestakov, leading yacht broker of the sales department of Shestakov Yacht Sales Inc. Shestakov Yacht Sales Inc., the official representative of the Miami/Fort Lauderdale FL headquarters.

Contact details

Email: andrey@shestakovyachtsales.com

Web: shestakovyachtsales.com/en/

Telephones

USA: +1(954)274-4435

Office hours

Monday – Saturday: **9:00 - 21:00** EDT

Sunday: **closed**

Address



Harbour Towne Marina, 850 NE 3rd St,
STE 213, Dania, FL 33004