

KENT ISLAND — STERLING YACHTS



Судостроитель: STERLING YACHTS

Год постройки: 2005

Модель: Моторная яхта

Цена: **ЦЕНА ЯХТЫ ПО ЗАПРОСУ**

Местонахождение: United States

Длина общая: 43' 0" (13.11m)

Ширина: 12' 8" (3.86m)

Мин. осадка: 3' 2" (0.97m)

Крейс. скорость: 9 Kts. (10 MPH)

Макс. скорость: 16 Kts. (18 MPH)

Купить Kent Island — STERLING YACHTS а также выбрать подходящую вам яхту из нашего каталога яхт вам поможет опытный яхтенный брокер Андрей Шестаков. На сегодняшний день компания Shestakov Yacht Sales Inc. имеет большое количество яхт в собственном списке продаж, а также тесно сотрудничает со всеми крупными яхтенными производителями по всему миру.

Для того чтобы купить яхту Kent Island — STERLING YACHTS а также проконсультироваться по любому вопросу связанному с покупкой, продажей, чартером яхт позвоните по телефону **+7(918)465-66-44**.

ОГЛАВЛЕНИЕ

ОГЛАВЛЕНИЕ	2
ХАРАКТЕРИСТИКИ	5
Обзор	5
Основная информация	5
Размеры	5
Скорость, вместимость и масса	5
Размещение	6
Корпус и палуба	6
Информация о двигателе	6
ПОДРОБНОЕ ОПИСАНИЕ	7
43' Sterling Atlantic Overview	7
43' Sterling Atlantic Vessel Walkthrough	7
43' Sterling Atlantic Accommodations	7
43' Sterling Atlantic Salon	7
43' Sterling Atlantic Galley	7
43' Sterling Atlantic Dining	8
43' Sterling Atlantic Master Stateroom	8
43' Sterling Atlantic Pilothouse	8
43' Sterling Atlantic Audio And Visual Equipment	8
43' Sterling Atlantic Cockpit	8
43' Sterling Atlantic Electronics and Navigational Equipment	9
43' Sterling Atlantic Electrical System	9
43' Sterling Atlantic Engine /Mechanical Equipment	9
43' Sterling Atlantic Deck Equipment	10
43' Sterling Atlantic Tender	10
43' Sterling Atlantic Safety And Fire Protection	10
43' Sterling Atlantic Exclusions	10
Исключения	11

Отказ от ответственности	11
ФОТОГРАФИИ	12
43' Sterling Atlantic starboard forward profile	12
43' Sterling Atlantic forward profile	12
43' Sterling Atlantic port aft profile	12
43' Sterling Atlantic aft profile	12
43' Sterling Atlantic anchor windlass	13
43' Sterling Atlantic brand plate	13
43' Sterling Atlantic foredeck	13
43' Sterling Atlantic cockpit	13
43' Sterling Atlantic salon forward	13
43' Sterling Atlantic salon aft	13
43' Sterling Atlantic salon port forward desk	14
43' Sterling Atlantic salon port	14
43' Sterling Atlantic salon starboard	14
43' Sterling Atlantic pilothouse forward	14
43' Sterling Atlantic pilothouse aft	14
43' Sterling Atlantic pilothouse port	14
43' Sterling Atlantic pilothouse starboard aft	15
43' Sterling Atlantic pilothouse port aft seating	15
43' Sterling Atlantic pilothouse helm	15
43' Sterling Atlantic galley photo1	15
43' Sterling Atlantic galley photo2	15
43' Sterling Atlantic galley photo3	15
43' Sterling Atlantic master stateroom	16
43' Sterling Atlantic master stateroom port	16
43' Sterling Atlantic master stateroom starboard	16
43' Sterling Atlantic master stateroom aft	16
43' Sterling Atlantic head	17

43' Sterling Atlantic engine room access	17
43' Sterling Atlantic fuel-water manifolds	17
43' Sterling Atlantic main engine	17
43' Sterling Atlantic starboard fuel tank	17
43' Sterling Atlantic electrical panel	17
43' Sterling Atlantic inverter-charger	18
43' Sterling Atlantic generator	18
43' Sterling Atlantic layout	18
43' Sterling Atlantic hauled out aft profile	18
43' Sterling Atlantic hauled out starboard forward profile	18
КОНТАКТЫ	19
Контактная информация	19
Телефоны	19
Время работы	19
Адрес	19

ХАРАКТЕРИСТИКИ

Обзор

Kent Island is a newer, fuel efficient, raised pilothouse trawler with very classic lines. With her folding mast taking her height from 19' to just 10', she is a perfect Great Loop candidate. If you are into classic styling, it doesn't get any more classic than Kent Island! She turns heads wherever she goes! Price reduced! Seller just completed his summer cruise and is ready to sell Kent Island and has found his next, larger boat. Kent Island must be sold quickly to accommodate this goal, so all serious offers are encouraged.

Основная информация

Тип судна: Моторная яхта

Модельный год: 2005

Год постройки: 2005

Страна: United States

Размеры

Длина общая: 43' 0" (13.11m)

Длина по ватерлинии: 41' 9" (12.73m)

Ширина: 12' 8" (3.86m)

Мин. осадка: 3' 2" (0.97m)

Трапы: 10' 0" (3.05m)

Скорость, вместимость и масса

Крейс. скорость: 9 Kts. (10 MPH)

Макс. скорость: 16 Kts. (18 MPH)

Водоизмещение: 21000 Pounds

Чистый вес: 36 Pounds

Вместимость воды: 150 Gallons

Вместимость сточного бака: 60 Gallons

Объем топливного бака: 300 Gallons

Размещение

Всего кают: 1

Всего коек: 2

Корпус и палуба

Материал корпуса: Fiberglass

Материал палубы: Composite

Информация о двигателе

Двигатели: 1

Производитель: Cummins

Тип двигателя: Inboard

Тип топлива: Diesel

ПОДРОБНОЕ ОПИСАНИЕ

43' Sterling Atlantic Overview

Justavacation is a newer, fuel efficient, raised pilothouse trawler with very classic lines. With her folding mast taking her height from 19' to just 10', she is a perfect Great Loop candidate. If you are into classic styling, it doesn't get any more classic than Justavacation! She turns heads wherever she goes! Price reduced! Seller just completed his summer cruise and is ready to sell Justavacation and has found his next, larger boat. Justavacation must be sold quickly to accommodate this goal, so all serious offers are encouraged.

43' Sterling Atlantic Vessel Walkthrough

From the cockpit, you step down into the salon where you will find a sleeper sofa to starboard, lounge chairs to port and a desk and cabinets forward. Step up into the raised pilothouse and you will find the helm and a cabinet to starboard and a settee and table to port. Step down forward to find the galley to port, head to starboard and master stateroom forward. Engine room access is through a deck hatch in the pilothouse.

43' Sterling Atlantic Accommodations

Justavacation offers a master stateroom forward with a centerline queen size berth. The head and shower are to starboard. There is also a sleeper sofa in the salon.

43' Sterling Atlantic Salon

The salon offers large side windows, a sliding teak & glass aft door, lounge chairs and cabinet to port, sleeper sofa to starboard and a desk and shelves port forward. There is a liquor/glass cabinet forward and a storage cabinet starboard forward.

43' Sterling Atlantic Galley

The galley is located port forward of the pilothouse.

- Tundra 12/24/110 volt refrigerator/freezer

- Origo Schott Ceran 3-burber cooktop
- Origo stainless steel microwave oven
- Double stainless steel sink
- Brazilian granite countertop

43' Sterling Atlantic Dining

Dining is available at the pilothouse settee table.

43' Sterling Atlantic Master Stateroom

The master stateroom is located forward and offers a centerline queen size berth, 2 cedar-lined hanging lockers, storage drawers and shelves, reading lights and overhead deck hatch and 4 portholes for plenty of natural light and ventilation.

The head is located to starboard and offers a granite sole and countertop.

43' Sterling Atlantic Pilothouse

Justavacation's raised pilothouse offers a helm starboard forward with a Recaro helm seat, storage cabinet and countertop starboard aft, settee and table port aft and a chart counter port forward. There are side deck access doors on each side.

43' Sterling Atlantic Audio And Visual Equipment

- Sharp flat screen TV in master stateroom
- Sharp Aquos flat screen TV in salon
- Bose surround sound stereo system and speakers

43' Sterling Atlantic Cockpit

Justavacation offers a teak covered cockpit with a sliding teak/glass door to the salon and deck hatches to the lazarette.

43' Sterling Atlantic Electronics and Navigational Equipment

- 2 X Raymarine RL70C radar/chart plotters
- Raymarine ST5000+ autopilot
- Raymarine ST60 speed/depth gauges
- Ritchie magnetic compass
- Icom IC-M402 VHF
- VDO gauges

43' Sterling Atlantic Electrical System

- Westerbeke 7.6BTD 7.6kW generator with 541 hours
- Xantrex Freedom Marine 30 3000 watt inverter/charger
- Xantrex Link 2000 inverter controller and battery monitor
- 3 X West Marine 8A4D 198 amp hour batteries
- Blue Sea 12vdc/120vac electrical panel
- 2 X 30 amp shore chords

43' Sterling Atlantic Engine /Mechanical Equipment

The engine room is accessed through a deck hatch in the pilothouse.

- Cummins 6BTA5.9 330hp main engine
- ZF Hurth 80.A gearbox
- Racor 500MA fuel filter
- Vetus bowthruster
- Vetus 15 gallon water heater
- Fuel and water system manifolds

- Mermaid reverse cycle, 3-zone air conditioning system
- Headhunter tank level monitor panel
- Headhunter Royal Flush heads
- Oil Xchanger oil change system
- 4-blade Nibral propeller

43' Sterling Atlantic Deck Equipment

- Vetus 1000 watt anchor windlass
- SL Claw 20kg anchor
- Stainless steel rails and deck hardware
- Folding Farol mast and boom with steadying sail and tender davit

43' Sterling Atlantic Tender

- 8'10" Walker Bay RIB tender
- Mercury 6hp 4-stroke outboard
- Farol boom as davit for tender

43' Sterling Atlantic Safety And Fire Protection

- Rule bilge pumps
- Fireboy FE241 engine room fire suppression system and emergency engine shutdown system

43' Sterling Atlantic Exclusions

Seller's personal belongings

Исключения

При продаже яхты исключаются личные вещи владельца.

Отказ от ответственности

Компания предоставляет описание судна или яхты добросовестно, но не может гарантировать точность этой информации, а также не ручается за техническое состояние. Покупатель должен проинструктировать своих агентов или оценщиков исследовать представленную информацию более подробно, по собственному желанию. Продажа судна или яхты, изменение цены или снятие с продажи будет происходить без предварительного уведомления.

ФОТОГРАФИИ

43' Sterling Atlantic starboard forward profile



43' Sterling Atlantic forward profile



43' Sterling Atlantic port aft profile



43' Sterling Atlantic aft profile



43' Sterling Atlantic brand plate



43' Sterling Atlantic anchor windlass



43' Sterling Atlantic foredeck



43' Sterling Atlantic cockpit



43' Sterling Atlantic salon forward



43' Sterling Atlantic salon aft



43' Sterling Atlantic salon port



43' Sterling Atlantic salon port forward desk



43' Sterling Atlantic salon starboard



43' Sterling Atlantic pilothouse forward



43' Sterling Atlantic pilothouse aft



43' Sterling Atlantic pilothouse port



43' Sterling Atlantic pilothouse port aft seating



43' Sterling Atlantic pilothouse starboard aft



43' Sterling Atlantic pilothouse helm



43' Sterling Atlantic galley photo1



43' Sterling Atlantic galley photo2



43' Sterling Atlantic galley photo3



43' Sterling Atlantic master stateroom



43' Sterling Atlantic master stateroom port



**43' Sterling Atlantic master stateroom
starboard**



43' Sterling Atlantic master stateroom aft



43' Sterling Atlantic head



43' Sterling Atlantic engine room access



43' Sterling Atlantic fuel-water manifolds



43' Sterling Atlantic main engine



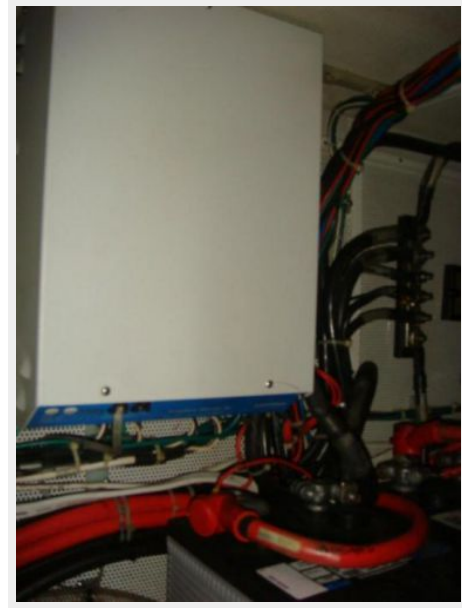
43' Sterling Atlantic starboard fuel tank



43' Sterling Atlantic electrical panel



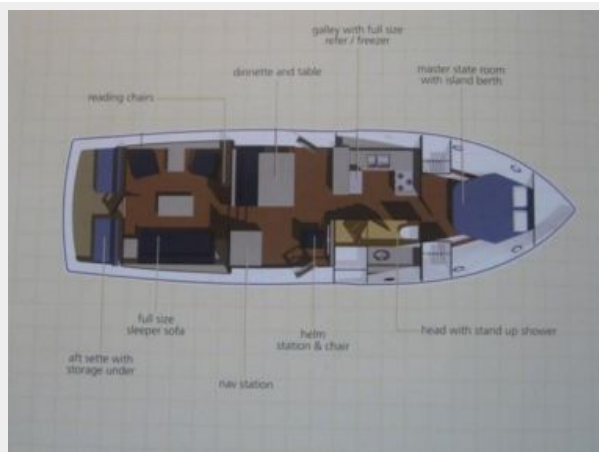
43' Sterling Atlantic inverter-charger



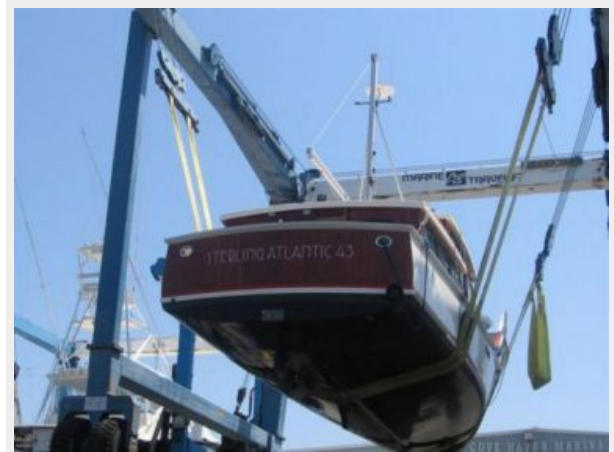
43' Sterling Atlantic generator



43' Sterling Atlantic layout



43' Sterling Atlantic hauled out aft profile



43' Sterling Atlantic hauled out starboard forward profile



КОНТАКТЫ

Андрей Шестаков (Andrey Shestakov) – ведущий яхтенный брокер отдела продаж яхт и судов компании Shestakov Yacht Sales Inc. Официальный представитель Shestakov Yacht Sales Inc. для русскоговорящих клиентов в центральном офисе компании в Майами/Форт Лодердейл/Флорида/США.

Контактная информация

Email: andrey@shestakovyachtsales.com

Web: shestakovyachtsales.com

Телефоны

Краснодарский край: **+7(918)465-66-44**

США, Майами, Флорида: **+1(954)274-4435**

Время работы

Понедельник – Суббота: **9:00 - 21:00**
EDT

Воскресенье: **Закрито**

Адрес



Harbour Towne Marina, 850 NE 3rd St,
STE 213, Dania, FL 33004