

VIKING SPORT CRUISER BY PRINCESS YACHTS — VIKING



Builder: VIKING

Year Built: 1999

Model: Motor Yacht

Price: PRICE ON APPLICATION

Location: United States

LOA: 52' 0" (15.85m)

Beam: 15' 0" (4.57m)

Max Draft: 3' 8" (1.12m)

Cruise Speed: 30 Kts. (35 MPH)

Max Speed: 38 Kts. (44 MPH)

Our experienced yacht broker, Andrey Shestakov, will help you choose and buy a yacht that best suits your needs Viking Sport Cruiser by Princess Yachts — VIKING from our catalogue. Presently, at Shestakov Yacht Sales Inc., we have a wide variety of yachts available on our sale's list. We also work in close contact with all the big yacht manufacturers from all over the world.

If you would like to buy a yacht Viking Sport Cruiser by Princess Yachts — VIKING or would like help answering any questions concerning purchasing, selling or chartering a yacht, please call +1(954)274-4435

TABLE OF CONTENTS

TABLE OF CONTENTS	2
SPECIFICATIONS	4
Basic Information	4
Dimensions	4
Speed, Capacities and Weight	4
Accommodations	4
Hull and Deck Information	4
Engine Information	5
DETAILED INFORMATION	6
Features	6
Accommodations	6
Galley	7
Electronics	7
Disclaimer	7
Exclusions	7
Disclaimer	7
PHOTOS	9
Cradle for tender	9
Bridge area	9
Bridge helm	9
Crane for tender	9
Beautiful Teak Cockpit	9
Beautiful Teak	9
Salon Starboard Sofa	10
Salon Port Side Loveseat	10
Salon Looking aft	10
Galley	10
Master cabin	10

guest cabin	10
Guest cabin 2	11
Head 1	11
Head 2	11
twin 660 Caterpillars	11
Onan Generator w/soundshield	12
CONTACTS	13
Contact details	13
Telephones	13
Office hours	13
Address	13

SPECIFICATIONS

Basic Information

Category: Motor Yacht

Sub Category: Flybridge

Model Year: 1999

Year Built: 1999

Country: United States

Fly Bridge: Yes

Cockpit: Yes

Dimensions

LOA: 52' 0" (15.85m)

Beam: 15' 0" (4.57m)

Max Draft: 3' 8" (1.12m)

Speed, Capacities and Weight

Cruise Speed: 30 Kts. (35 MPH)

Max Speed: 38 Kts. (44 MPH)

Displacement: 44800 Pounds

Water Capacity: 187 Gallons

Holding Tank: 30 Gallons

Fuel Capacity: 500 Gallons

Accommodations

Total Cabins: 3

Total Heads: 2

Hull and Deck Information

Hull Material: Fiberglass

Engine Information

Engines: 2

Manufacturer: Caterpillar

Model: 3196TA

Engine Type: Inboard

Fuel Type: Diesel

DETAILED INFORMATION

Features

Loaded with full options for offshore extended cruising including a water maker. Her twin 660 hp Caterpillars had all updates completed at 500 hours. She is ready to enjoy and a must see for the buyer that appreciates a well-maintained yacht.

- Bow thruster with dual station controls
- Fuel filters
- Contaminated fuel warning system
- Dripless shaft logs
- Power assisted hydraulic steering
- Integrated flybridge staircase
- Fly bridge refrigerated cool box
- Fly bridge carpeting
- Custom radar arch to accommodate two radar antennas and rear facing 110V spreader light
- Remote electric spot light
- Teak aft deck and fly bridge stairs
- Windlass
- Hot & cold cockpit shower
- Lower helm electric side window
- (3) windshield wipers/washers

Accommodations

This beautiful fresh water-kept Viking has the more desirable three stateroom layout. Great layout for long trips to the islands.

Master

- Large double bed with drawers below
- Vanity with mirror and storage
- Hanging and storage lockers
- Toshiba 15' LCD TV
- AM/FM/CD stereo

Stateroom 2

- 2 x twin beds with drawers below

- Hanging and storage lockers

Stateroom 3

- 2 x twin beds with drawers below
- Hanging and storage lockers

Galley

- Refrigerator/freezer
- (4) burner electric stove
- Microwave/convection oven
- Teak & holly sole

Electronics

Loaded with options on upper and lower electronics.

- North Star GPS
- Furano Radar/chart plotter
- Auto pilot
- DSS Sat TV
- 15KW Onan generator
- Oil change system
- 600GPD water maker
- Hydraulic crane for tender

Disclaimer

The Company offers the details of this vessel in good faith but cannot guarantee or warrant the accuracy of this information nor warrant the condition of the vessel. A buyer should instruct his agents, or his surveyors, to investigate such details as the buyer desires validated. This vessel is offered subject to prior sale, price change, or withdrawal without notice.

Exclusions

Owner's personal belongings.

Disclaimer

The Company offers the details of this vessel or yacht in good faith but cannot guarantee or warrant the accuracy of this information nor warrant the condition of the vessel. A buyer should instruct his representatives, agents, or his surveyors, to investigate such details as the buyer desires validated. This vessel or yacht is offered subject to prior sale, price change, or withdrawal without notice.

PHOTOS

Cradle for tender



Bridge area



Bridge helm



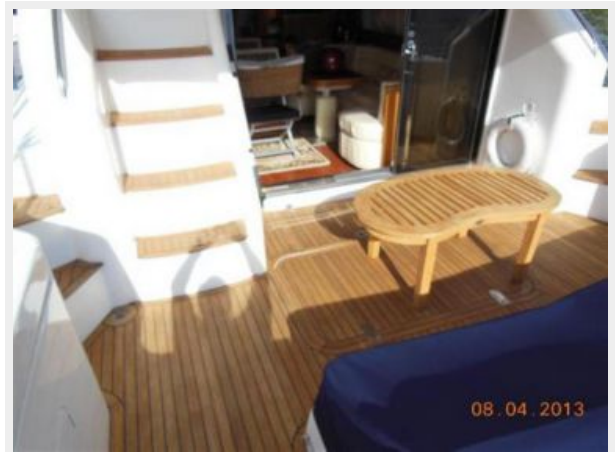
Crane for tender



Beautiful Teak Cockpit



Beautiful Teak



Salon Starboard Sofa



Salon Port Side Loveseat



Salon Looking aft



Galley



Master cabin



guest cabin



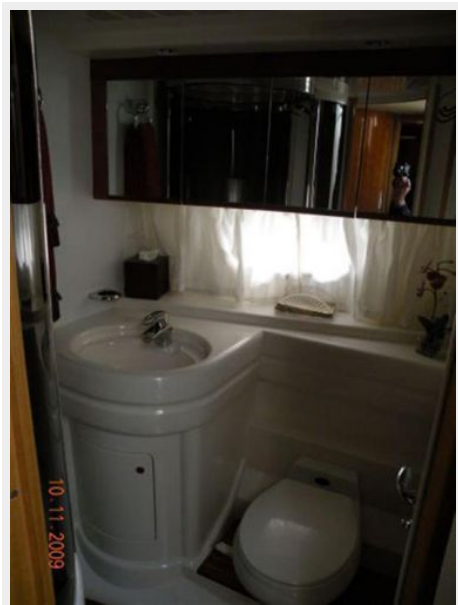
Guest cabin 2



Head 1



Head 2



twin 660 Caterpillars



Onan Generator w/soundshield



CONTACTS

Andrey Shestakov, leading yacht broker of the sales department of Shestakov Yacht Sales Inc. Shestakov Yacht Sales Inc., the official representative of the Miami/Fort Lauderdale FL headquarters.

Contact details

Email: andrey@shestakovyachtsales.com

Web: shestakovyachtsales.com/en/

Telephones

USA: +1(954)274-4435

Office hours

Monday – Saturday: **9:00 - 21:00** EDT

Sunday: **closed**

Address



Harbour Towne Marina, 850 NE 3rd St,
STE 213, Dania, FL 33004