

26' 1983 NORDIC TUGS 26 — NORDIC TUGS



Судостроитель: [NORDIC TUGS](#)

Год постройки: 1983

Модель: Траулер

Цена: ЦЕНА ЯХТЫ ПО ЗАПРОСУ

Местонахождение: United States

Длина общая: 26' 0" (7.92m)

Ширина: 9' 6" (2.90m)

Макс. осадка: 2' 9" (0.84m)

Купить 26' 1983 Nordic Tugs 26 — NORDIC TUGS а также выбрать подходящую вам яхту из нашего каталога яхт вам поможет опытный яхтенный брокер Андрей Шестаков. На сегодняшний день компания Shestakov Yacht Sales Inc. имеет большое количество яхт в собственном списке продаж, а также тесно сотрудничает со всеми крупными яхтенными производителями по всему миру. Для того чтобы купить яхту 26' 1983 Nordic Tugs 26 — NORDIC TUGS а также проконсультироваться по любому вопросу связанному с покупкой, продажей, чартером яхт позвоните по телефону **+7(918)465-66-44**.

ОГЛАВЛЕНИЕ

ОГЛАВЛЕНИЕ	2
ХАРАКТЕРИСТИКИ	4
Основная информация	4
Размеры	4
Корпус и палуба	4
Информация о двигателе	4
ПОДРОБНОЕ ОПИСАНИЕ	5
Key Features	5
Dimensions	5
Accommodations & Walk-Through	5
Galley	6
Electrical & Electronics	7
Hull and Deck	8
Additional Information	9
Comments	10
Manufacturer Provided Description	10
Исключения	10
Отказ от ответственности	10
ФОТОГРАФИИ	12
Galley	12
Salon	12
Salon-2	12
Pilot House	12
Helm	13
Over Had Electronics	13
Forward Stateroom	13
Aft deck w/ seating	13
Manufacturer Provided Image	13

Layout	13
Coast Guard Aux rigged	14
Engine Room	14
Forwad Ddeck Railing	14
Aft Deck Railing	14
Boat on Trailer	14
КОНТАКТЫ	15
Контактная информация	15
Телефоны	15
Время работы	15
Адрес	15

ХАРАКТЕРИСТИКИ

Основная информация

Тип судна: Траулер

Модельный год: 1983

Год постройки: 1983

Страна: United States

Размеры

Длина общая: 26' 0" (7.92m)

Ширина: 9' 6" (2.90m)

Макс. осадка: 2' 9" (0.84m)

Длина привального бруса: 26' 4" (8.03m)

Корпус и палуба

Материал корпуса: Fiberglass

Информация о двигателе

Двигатели: 1

Производитель: Unknown

Тип двигателя: Inboard

Тип топлива: Diesel

ПОДРОБНОЕ ОПИСАНИЕ

Key Features

IDEAL GREAT LOOP VESSEL FOR CRUISING COUPLE OR SINGLE

Low Hours on Upgraded 85 HP Engine - Excellent Fuel Economy - Long Range

Private Double Forward Cabin - Additional Berths for Two in Salon

Equipped as Coast Guard Auxiliary Vessel

Trailer Included

Walk Around Decks - Large Aft Cockpit - Good Working Fore-Deck

Dimensions

Length Over All..... 26 ft 4 in

Beam..... 9 ft 6 in

Draft..... 2 ft 9 in

Weight..... 7,500 lbs

Bridge Clearance .. 9 ft 6 in

Headroom..... 6 ft 6 in

Hull Type - Semi Displacement

Engine... Perkins Diesel - 85 HP (1004 hours)

Fuel 75gal

Water 50 gal

Waste 20 gal

Vessel is currently certified as a Coast Guard Auxiliary boat with all required equipment

Accommodations & Walk-Through

Sleeps (4) - Double berth forward - Salon settee converts to a double

The Nordic Tugs-26 is an excellent vessel for a couple to cruise comfortably and economically - She also has room for 2 additional guests to sleep aboard.

The Aft cockpit is large for a vessel of this size and there is access to a swim platform aft. There is also a complete walk around deck for access for and aft.

The Salon is entered from the aft deck and provides a complete galley to Port, and large settee/dining area to Starbd (settee converts to a double berth) - There is ample floor space in this configuration, and large windows Port and Starbd for a bright airy feeling

Up a couple of steps from the Salon is the Pilot house with comfortable helm seat to Starbd, Plus 2 quick access top opening boxes on each side, and an additional seat to Port - Huge windows all around offer excellent visibility. Two side doors provide direct access to the side decks or forward deck.

A partial bulkhead between the Pilot House and Salon allows for easy conversation between the captain and guests in the Salon

Down a few steps - Forward is the head w/shower and forward state room.

CABIN Forward = Double berth, hanging locker, front opening linen closet below bunk, top loaded storage under bunk , convenience seat w/storage under, shelf over hanging locker, Bomar hatch with screen

HEAD- enclosed manual toilet, sink (pressure hot/cold water), cabinet under, open cabinet under side deck, shower w/sump disconnected)

Pilot House, = windshield wiper, anti fogging fan, original seat installed (TO make more room for CGAUX patrol use), custom seats came with the boat in storage - will go with the boat, storage under the seats, custom navigation desk, teak grill folds down over forward companion way for extra room, Hinged helm console with teak wheel., Rudder angle indicator, Marine bell clock

FLOORING: Carpet on fiberglass

SALOON SEATING 4 comfortably, lift out dinette table drops to make a double berth

SALOON STORAGE- Hanging locker, storage under seat front and top access and behind the back seat cushions, BAR cabinet, handy shelf over hanging locker

Galley

The galley is quite functional and very complete for a vessel of this size -It is designed for cruising with a stove, refrigerator, sink w.pressurized water, and large counter top. The Galley extends along the full length of the Salon and is well lit by large side windows.

full set of cooking utensils - flatware - plates - cups

Refrigerator: AC/DC front loading under the galley counter

Stove: 2 burner Arego combination AC / alcohol in counter top w/bread

board Cover

Single sink with hot/cold pressure water

STORAGE: Cabinets under the sink and stove

Water heater AC/engine

AC 12 cup coffee maker

Electrical & Electronics

ECTRONICS / ENTERTAINMENT

TV: Antenna and fixtures in place but the TV set got stolen over the winter

Radar: Furuno NAVnet VX Color video Plotter

Depth sounder Cricket 2.0-200 ft

Compass : Top reading lighted

VHF Radios: Two 54 channel VHF-FM radios, one is DSC, MSSI

Loud hailer; Standard Horizon VHL-300 30 watt fog horn, bell and whistle

two way speaker/microphones fore and aft

KNOT METR / LOG: Impulse 200 speed log

DEPTH METER: Impulse 2.0' to 200 ' w/alarm

GPS: GARMIN MAP 162

Horns: Compressor w/tank in engine room

Kahlenberg air Whistle (off a seam yard engine)

air horn (from a WWII Explosives plant)

ELECTRICAL:

12 volt breaker panel

BATTERIES – 2 #27 12 volt marine with selector switch

Battery charger

AC Breaker panel

70 watt DC to AC converter

Shore power outlet.

30 AMP shore power cable with 15 AMP converter pigtail

Bilge Pump / auto switch .

Oil drain pump

Vacuum cleaner

Solar panel to charge batteries

Hull and Deck

This is a ruggedly built vessel - and well thought out for cruising. Her large aft deck is ideal for setting up chairs and relaxing either underway or at a mooring. From the aft deck is there is easy access to the swim platform.

Good walk around side decks make it easy to move fore and aft, and her foredeck allows for easy handling of lines or ground tackle.

The boat has a distinctive nautical look with her functional Pilot house, well proportioned Salon, and even a smoke stack (non functional). Beautiful fore and aft pulpits add to the Nautical flavor and provide a good measure of safety.

The hull has a factory color molded into the gel coat that avoids the scratches of boats with painted hulls.

She is designed for protected water cruising or offshore passages,

Custom chart desk in Pilot House

Night lighting has been installed in Pilot House

Dual sets of Pilot house seats - standard and upgraded

Swim Platform w/ladder

Hull Green Awl Grip paint year unknown

BOTTOM PAINT - 2012

ANCHORS – TYPE / SIZE

Large Plow with chain and more than 220 ft rode - never had it all the way out to measure.

Danforth with chain and 100' rode

Anchor roller

teak swim platform with ss ladder

Exterior locker packages in cockpit w/ folding seats

Custom AC Cockpit lights

Sampson post forward

hawser cleats aft

mid-ship cleats

Mooring line -

At least 6 fenders a couple over sized

Custom teak rails with belaying pins for lines

Towing bit

2 folding deck chairs

2 folding deck seats for the cockpit lockers

Additional Information

Includes Calkins trailer for storage or over road transport

SCREENED HATCHES / PORTS - Bowmar hatch forward, round opening ports in the forward cabin and in the head. Pilot house sliding doors, Saloon a combination hatch Snap on screen and covers for the openings, UV covers for the pilothouse windows. venetian blinds in the saloon

CABIN FANS: Two AC fans and one DC fan. DC-AC- converter for the AC fans

NUMBER CABIN LIGHTS - Two in the forward cabin, one in the head, two with red night lighting in the pilot house, two in the saloon

4 cockpit seats

SAFETY EQUIPMENT: LIFE JACKETS - 5throwable life rings 2 decorator throw-able seat cushions

custom cockpit lighting

Plow anchor w/ chain & rode

Danforth anchor w/ chain & rode

Comments

This is a SALTY vessel with very distinctive characteristics. She has an upright profile with plumb bow and a well arranged interior, very suitable for the cruising couple. More than just an eye catching design, she is well constructed and quite able to head offshore for extended coastal cruising.

Construction is solid fiberglass, and her full keel, semi-displacement hull features a rounded transom and wide 9 ft 6 in beam.

This was a popular vessel with a production run of 172 boats, and is still an excellent choice today for the cruiser looking for an economical - comfortable boat.

Manufacturer Provided Description

The 26 was a remarkably spacious and comfortable design, with built in quality, meant safety and long-term value. Underway she cruised comfortably up to 14 knots depending on her engine options--. The Nordic Tug 26 was retired in 1997 after 17 years of production. More than 175 Tugs were built during the production run.

Исключения

При продаже яхты исключаются личные вещи владельца.

Отказ от ответственности

Компания предоставляет описание судна или яхты добросовестно, но не может гарантировать точность этой информации, а также не ручается за техническое

состояние. Покупатель должен проинструктировать своих агентов или оценщиков исследовать представленную информацию более подробно, по собственному желанию. Продажа судна или яхты, изменение цены или снятие с продажи будет происходить без предварительного уведомления.

ФОТОГРАФИИ

Salon



Galley



Salon-2



Pilot House



Over Had Electronics



Helm



Forward Stateroom



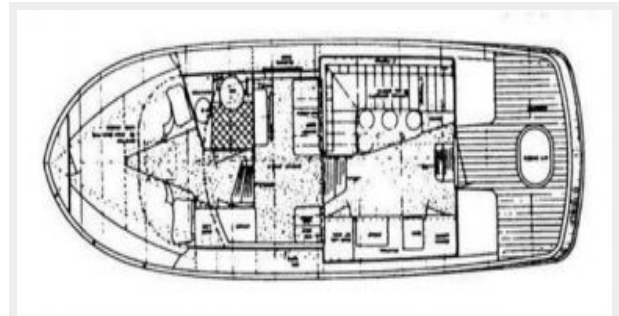
Aft deck w/ seating



Manufacturer Provided Image



Layout



Coast Guard Aux rigged



Engine Room



Forwad Ddeck Railing



Aft Deck Railing



Boat on Trailer



КОНТАКТЫ

Андрей Шестаков (Andrey Shestakov) – ведущий яхтенный брокер отдела продаж яхт и судов компании Shestakov Yacht Sales Inc. Официальный представитель Shestakov Yacht Sales Inc. для русскоговорящих клиентов в центральном офисе компании в Майами/Форт Лодердейл/Флорида/США.

Контактная информация

Email: andrey@shestakovyachtsales.com

Web: shestakovyachtsales.com

Телефоны

Краснодарский край: **+7(918)465-66-44**

США, Майами, Флорида: **+1(954)274-4435**

Время работы

Понедельник – Суббота: **9:00 - 21:00**
EDT

Воскресенье: **Закрито**

Адрес



Harbour Towne Marina, 850 NE 3rd St,
STE 213, Dania, FL 33004