

## CIPANGO — VERSILCRAFT



**Судостроитель:** VERSILCRAFT

**Год постройки:** 1992

**Модель:** Моторная яхта

**Цена:** ЦЕНА ЯХТЫ ПО ЗАПРОСУ

**Местонахождение:** United States

**Длина общая:** 97' 2" (29.60m)

**Ширина:** 20' 0" (6.10m)

**Мин. осадка:** 6' 3" (1.90m)

**Макс. осадка:** 6' 7" (2.00m)

**Крейс. скорость:** 18 Kts. (21 MPH)

**Макс. скорость:** 21 Kts. (24 MPH)

Купить CIPANGO — VERSILCRAFT а также выбрать подходящую вам яхту из нашего каталога яхт вам поможет опытный яхтенный брокер Андрей Шестаков. На сегодняшний день компания Shestakov Yacht Sales Inc. имеет большое количество яхт в собственном списке продаж, а также тесно сотрудничает со всеми крупными яхтенными производителями по всему миру.

Для того чтобы купить яхту CIPANGO — VERSILCRAFT а также проконсультироваться по любому вопросу связанному с покупкой, продажей, чартером яхт позвоните по телефону **+7(918)465-66-44**.

# ОГЛАВЛЕНИЕ

ОГЛАВЛЕНИЕ	2
ХАРАКТЕРИСТИКИ	4
Обзор	4
Основная информация	4
Размеры	4
Скорость, вместимость и масса	4
Размещение	5
Корпус и палуба	5
Информация о двигателе	5
ПОДРОБНОЕ ОПИСАНИЕ	6
Accommodations	6
Captains Cabin	7
Crew Quarters	7
Deck Equipment	8
Electrical System	8
Engine /Mechanical Equipment	9
Flybridge	10
Galley	10
Pilothouse	11
Tenders	11
Vessel Walkthrough	12
Remarks	13
Исключения	13
Отказ от ответственности	13
ФОТОГРАФИИ	14
Stern	14
КОНТАКТЫ	19
Контактная информация	19

---

Телефоны	19
Время работы	19
Адрес	19

---

# ХАРАКТЕРИСТИКИ

## Обзор

CIPANGO represents a relatively high volume European motoryacht that has been updated from stem to stern. She offers four suites with two of them nearly identical master cabins, plus crew for four. Ship's systems including generators, watermaker, engines, navigation electronics, wiring and of course all soft goods have been updated during the current ownership. An Atlas shore power converter system offers versite 50 or 60 Hz input power.

## Основная информация

<b>Тип судна:</b> Моторная яхта	<b>Модельный год:</b> 1992
<b>Год постройки:</b> 1992	<b>Страна:</b> United States
<b>Верх:</b> Bimini Top	<b>Открытая палуба мостика:</b> Да

## Размеры

<b>Длина общая:</b> 97' 2" (29.60m)	<b>Ширина:</b> 20' 0" (6.10m)
<b>Мин. осадка:</b> 6' 3" (1.90m)	<b>Макс. осадка:</b> 6' 7" (2.00m)

## Скорость, вместимость и масса

<b>Крейс. скорость:</b> 18 Kts. (21 MPH)	<b>Крейсерская скорость поворота:</b> 2100 Kts.
<b>Макс. скорость:</b> 21 Kts. (24 MPH)	<b>Макс. скорость поворота:</b> 2300 Kts.
<b>Чистый вес:</b> 112 Pounds	<b>Вместимость воды:</b> 397 Gallons
<b>Вместимость сточного бака:</b> 200 Gallons	<b>Объем топливного бака:</b> 2695 Gallons

## Размещение

---

**Всего кают:** 4

**Всего ком. состава:** 8

**Каюты экипажа:** 2

**Спальных мест экипажа:** 4

## Корпус и палуба

---

**Материал корпуса:** Fiberglass

**Материал палубы:** Teak

**Комплектация корпуса:** Deep Vee

**Дизайнер экстерьера:** Versilcraft

## Информация о двигателе

---

**Двигатели:** 2

**Производитель:** Detroit Diesel

**Модель:** 16V92TA DDEC

**Тип двигателя:** Inboard

**Тип топлива:** Diesel

# ПОДРОБНОЕ ОПИСАНИЕ

## Accommodations

**Master Stateroom** Accessed via steps from the starboard side Companionway is the full beam Master Cabin. A king size berth off the forward bulkhead has an upholstered headboard set atop a cherry lattice work over mirrors. There are four large drawers beneath the berth. To both port and starboard are three drawer nightstands. Above each are inset gilded niches with twin lamp sconces. Six more dimmable halogen mini spots are above the bed. The port nightstand has a phone and a JVC AM/FM/CD player (new 2006). To port is a vanity with five burl wood drawers, an upholstered stool and a hinged top. Above the vanity is an opening stainless steel porthole with weather cover, full drapes and two halogen mini spots. At the foot of the berth is one double door auto lit hanging locker and two single door auto lit hanging lockers. The starboard locker has five shelves and a dressing mirror in addition to the hanging space. Between the hanging lockers is a 19" Hitachi TV, a Panasonic VCR/DVD combo, a hidden wall safe and a small "Tundra" drink refrigerator (new 2006) behind doors. To port is a two person settee flanked by twin chests of four drawers with table lamps above. Above the settee is an opening stainless steel porthole with weather cover on full drapes. Access to the private Head is found to starboard. Also in this cabin are eight additional halogen mini spots, digital AC controls, stereo speakers (new 2006) and a carpet runner.

**Master Head** The Master Head is also full beam and impressive in size. Included in this area is a double vanity with four cabinet doors below, and twin under mount china sinks on an onyx countertop. There are two large mirrored medicine cabinet doors above. Besides a stall shower with bi fold door, seat, exhaust fan, hand held or wall mountable fixture, opening porthole with stainless steel cover, there is a full size Jacuzzi tub with an onyx surround, mirrored bulkhead and opening stainless steel porthole with weather cover above. Also in this area is a bidet, two heated towel racks, onyx tile sole and a Microphor toilet in a private area with lights, GFCI protected outlets, an exhaust fan and an opening stainless steel porthole with weather cover.

**VIP Head** The VIP Head is also full beam and is just forward the VIP Cabin. There is a double vanity with four cabinet doors below and twin under mount china sinks in an onyx vanity top. Twin mirrored door medicine cabinets offer abundant storage. The shower has a bi fold door, seat, wall mounted or hand held shower fixture, an opening stainless steel porthole with weather cover, two halogen mini spots and an exhaust fan. Also in this area is a bidet and a private Microphor toilet with an opening stainless steel porthole with weather cover, two halogen mini spots, GFCI protected outlets and an exhaust fan. The sole is white marble tile, there are five halogen mini spots above the vanity and there are two heated towel racks.

**Starboard Guest Cabin** The queen size berth is situated off the aft bulkhead. Four drawers below the berth offer storage. The upholstered headboard sits upon a five panel fully mirrored aft bulkhead. Twin three drawer nightstand with dual fixture sconce lights flank the berth. Overhead are five halogen mini spots and digital AC controls for the (new 2006) air handler. Outboard is an opening stainless steel porthole with weather cover and full drapes. A small vanity with stool and dressing mirror

are next forward. A double door mirrored hanging locker with auto light also reveals a Samsung 17" LCD TV and a Jwinn DVD player. **Starboard Guest Cabin Head** The private Head for the Starboard Guest Cabin has a vanity with two cabinet doors below and a china under mount sink on the marble countertop. A Microphor toilet and bidet are below two sliding mirrored door storage cabinets with an opening stainless steel porthole with weather cover above. A retractable shade covers the porthole. The stall shower has a bi fold door, a seat, a hand held or wall mountable fixture, an exhaust fan and a light. Also in this area is a marble tile sole to match the countertop, GFCI protected outlets and four halogen mini spots for lighting. **Port Guest Cabin** The Port Guest Cabin has twin single berths with two drawers each under the berth. Upholstered headboards sit upon a fully mirrored aft deck bulkhead. Between the berths is a two drawer nightstand with a phone and a JVC AM/FM/CD player. Above is a wall mounted sconce. Above the outboard berth are two inset storage areas, an opening stainless steel porthole with weather cover and full drapes. Next forward is a an auto lit hanging locker with a mirrored exterior. Also in this cabin are (new) digital AC controls, five overhead halogen mini spots, stereo speakers, a carpet runner and access to a private head.

**Port Guest Head** The Port Guest Head is compact but offers everything anyone would need. This includes a vanity with two cabinet doors below an under mount china sink in a marble countertop, medicine cabinet, GFCI protected outlets, opening porthole with stainless steel weather cover, toilet, exhaust fan and three lights. The stall shower has a bi fold glass door and a hand held or wall mounted shower fixture. The sole of the Head is a marble tiles to match the countertop. Hidden from view is a new (2006) hot water heater which services both aft cabins.

---

## Captains Cabin

---

Forward to starboard is the Captain's Cabin with two single berths in an over/under arrangement reading lights, digital AC controls, opening stainless steel porthole with weather cover, bookshelves, JVC AM/FM/CD, a hanging locker with four drawers below, a full size dressing mirror and three very large storage cabinets plus four additional drawers under the berth. The private Head has a sink, Microphor toilet, medicine cabinet GFCI protected outlets and curtain shower. There is an exhaust fan, two overhead halogen mini spots and an opening stainless steel porthole with weather cover.

---

## Crew Quarters

---

The second cabin is nearly identical with two single bunks with four drawers below the lower bunk and an opening stainless steel porthole with weather cover above the upper bunk. A hanging locker with four drawers is aft of the bunks. Also in this cabin is a Jensen AM/FM/CD (new 2006), reading lights, AC controls and bookshelves. The private Head has a Microphor toilet, sink, medicine cabinet, two opening stainless steel portholes with weather covers, two door vanity, GFCI protected outlets, additional storage and a curtain shower plus a huge hatch with skylight. Entry to the Crew Head is via a doggable watertight door (rebuilt 2006).

## Deck Equipment

**Fore Deck** Teak decks w/(new 2006) sub deck & teak decking forward of step down Varnished teak cap rails Welded stainless steel bow & side rails Bollard type stainless steel cleats Dual through hull anchor system 2 x Poole type 220 lb anchors w/400' of chain Raised deck hatch to Crew Area Five person bow seat w/removable Sunbrella cushions & cover Four person sun lounge w/removable Sunbrella cushions, cover & storage below Forward deck lights International navigation lights Lofrans above deck anchor windlass w/dual wildcats, capstan, foot switches (new 2006) & wired remote (new 2006) Ship's bell mounted on bow (new 2006 to ABS specifications) Above deck anchor locker access 5 x Place stainless steel fender holders port & starboard Fresh water spigot on bow Fresh water shower on bow Port & starboard storage lockers White Textulene windshield cover White Textulene Pilothouse side window covers 2 x Varnished boat hooks mounted at side decks

Silent Witness port & starboard side deck cameras (new 2006) 4 x port & 4 x starboard side deck overhead lights Stainless steel rub rail (new 2006) 7 Step Marquipt boarding ladder mounted to starboard (new 2006) Side deck overhead Engine Room air intakes Side deck lockable Pantograph secondary Engine Room access Stainless steel window frames - all frames removed & polished, seals replaced 2006 Backlit yacht name w/multi color lighting

**Aft Deck** Teak decks Stainless steel/glass pneumatic sliding door to Salon w/Panther Ultra Quiet compressor (new 2006) 2 x Lofrans Aft Deck capstans w/deck switches (new 2006) Swim platform shower & fresh water spigot behind fiberglass door Varnished teak cap rails Welded stainless steel stern rails Port & starboard boarding gates w/fold down steps Varnished teak aft bulkhead Pro video Aft Deck color camera (new 2006) Aft Deck fire station in teak cabinet 8 x Overhead DC lights 2 x Pioneer stereo speakers w/volume control Boarding gate for passarelle Fully adjustable aft passarelle with new teak grate decking Wired remote for passarelle plus wireless remote (new 2006) Teak cabinet w/(2) drawers & (2) cabinets, starboard side forward Varnished teak Aft Deck table w/leaves & padded cover 2 x Varnished teak high back chairs w/removable covers 6 x Folding teak chairs 4 x Curved steps to teak integral swim platform both port & starboard Integral teak covered swim platform (new teak 2005) 3 x Flat top folding cleats for tender mooring at swim platform 6 x Swim platform deck lights Stainless steel & teak five step stowable swim ladder Emergency tiller system Deck hatch access to Lazarette Portable fiberglass step box

## Electrical System

2 x 50 kW John Deer three phase/50 hz generator (new 2006) (gen. hours: port: 1898 stbd: 1548 as of 10/15/12) Generators have auto start at loss of shore power

2 x 100 amp shore cord connections on swim platform Atlas Shore Power smart box in Lazarette Yaskawa F7 Varis speed - soft start for Atlas 2 x Telephone connections aft 220 Volt single or three phase indicator panel/selector switch 2 x Woodward GCP 30 genset control panels w/auto start Federigio Landucci electric panel (Viareggio) Atlas Shore Power Classic frequency



converter in Engine Room Back up battery starting systems for main engine w/selector switch 2 x 50 amp Vanner high efficiency battery equalizers/isolators 8 x Grp 3/AGM house batteries 4 x 8D start batteries for engine 2 x 4D SSB batteries 2 x 12 volt generator batteries Mastervolt 12 volt battery charger for generator batteries Sentry 24 volt 60 amp battery charger for house, starting & back up DDEC controls 6 x Battery shut off switches 3 x Soft starts for air conditioning compressor Engine Room area electrical 220V panel w/(27) breaker protected circuits Engine Room area electrical 24 volt panel w/(14) breaker protected circuits Newmar 115 volt to 12 volt 35 amp converter for miscellaneous electronics

**Pilothouse Electrical Panel** Navigation light schematic Bilge pump schematic 3 x Sewage tank alarm/indicators 5 x Grey water tank alarm/indicators Drinkable water tank low level alarm Fuel day tank low level alarm 2 x Main engine Racor filter alarms Shore line volt/amp gauges Battery charge volt/amp gauges w/service or start selector switch Battery discharge volt/amp gauges for service & start systems 2 x Engine alternator amp gauges Electronics battery volt & amp gauges 22 x 220 volt breaker protected circuits 36 x 224volt breaker protected circuits

## Engine /Mechanical Equipment

Engine hours: Portside engine DDEC reads - 4204 Starboard engine DDEC reads - 4295  
Gensets: Port. 1898, Stbd. 1548

2 x Engine block heaters New 2006 Stewart Warner manual Engine Room gauges Air sep crankcase ventilation system (new 2007) Sturdy DDEC electronic engine control system 2 x 220 volt Engine Room blowers, new 2006 w/salt collection boxes 2 x Main engine coolant recovery bottles 2 x Dual Racor 1000 engine fuel filters Fill Rite fuel counter on day tank 220V Ship's air compressor 3 x 220V waste tank pump out, all rebuilt 2006 2 x Mounted tool boxes 24 volt Excalibur fresh water pumps 220 volt Mach 5 Headhunter water pump Hydraulic bow thruster system (serviced and rebuilt 2006) 220 volt raw water pump for AC cooling Six step emergency ladder to starboard side deck Titan Series 80 pneumatic exhaust gas bypass valve Auto closeable Engine Room air intakes 2 x 220 volt fuel transfer pumps, rebuilt 2006 Site gauge on day tank 220 volt fluorescent Engine Room lights 24 volt incandescent Engine Room lights 3 x 6 ton compressor Aqua Air chilled water system mounted on custom stainless steel drip tray 220 volt cold water circulation pump

Marine Air digital inlet/outlet temp monitors 220 volt 9 compartment bilge pump (12/06) Remote Flybridge bar refrigerator compressor 220 volt fire pump w/cross over valve to bilge pump Silent Witness Engine Room camera 2 x Racor 500 fuel filter for generator 2 x Generator coolant recovery bottles Super Silencer lead/foam sound shields for generator All sea cocks are new 2006 Intake valves rebuilt on main engine raw water intakes New 2006 Engine Room insulation CO2 fire system w/auto air & fuel shutdown, all in certification 350 hours since overhaul on starboard engine Major service on port engine PTO for variable speed bow thruster off starboard generator (PTO rebuilt 2006) 220 volt bi-directional intake blower for Engine Room, new 2006 All

black & gray water can be set to automatic or manual pump out Naiad stabilizer system replaced 2005 including pads on hull New 2007 Reverse Osmosis of Florida Component 1200 gallon per day watermaker w/flushing valves Both generators & all chillers plumbed w/flush valves so periodic rising w/a descaling agent like "Barnacle Buster" takes minutes, not days

## Flybridge

---

Teak decks Fiberglass radar arch Stainless & glass sliding door from Pilothouse to Flybridge w/Textulene cover 4 x Bow Bimini top over Helm (new 2006) Bimini top over aft seating area from arch aft (new 2006)

6 x FRP hinged storage cabinets on bridge sides Clarion XMD3 AM/FM/CD stereo Large Venturi windscreen w/new plexiglass (2006) w/rugged aluminum frame Three person upholstered helm seat w/backrest to face fore or aft w/storage below (recovered 2006) 4 x Pioneer stereo speakers 2 x Side gates to boat deck 3 x Triconfort white resin chairs w/new Sunbrella cushions & covers Triconfort footstool Mounted aft seating area dining table w/(2) leaves & padded cover Teak topped service bar w/glass storage, Raritan icemaker (new 2006), stainless steel drink cooler & cover Fiberglass U shaped seating to seat 8 w/removable cushions, cover & storage below 2 x Down lights in arch Pipe arch over arch for 36" Sea Tel Sat dome 2 x Courtesy flag halyards on pipe arch Helm cover ACR 406 EPIRB Air horns Forward facing camera off arch ACR spotlight Removable sun pads w/backrests

**Flybridge Instruments** 2 x DDEC EDM's Simrad AP20 autopilot Kobelt rudder angle indicator DDEC electronic controls ACR spotlight controls DDEC station active controls Icom M402 VHF w/DSC (new 2006) Clarion stereo remote panel Kobelt jog steering lever Ultraflex mechanical back up engine controls (new 2006) Furuno RD30 GPS navigator Furuno 6" Nav Net GPS/depth VEI 13" LCD daylight screen for plotter/video (new 2007) 6" Ritchie magnetic compass 12V DC power outlet Engine start/stop controls Exhaust bypass controls Trim tab indicators Variable speed bow thruster controls Varnished wood steering wheel w/new helm 2006

## Galley

---

The Galley is all the way forward on the main deck accessed by either a sliding pocket door from the starboard Companionway or from an exterior Pantograph door on the port side deck. It is unusually spacious for a European vessel. Equipment as per below: 2 x Side by side Miele stainless steel refrigerator/freezers GE Profile stainless steel microwave/convection oven Miele built in oven w/fan (completely rebuilt 2006) GE beverage refrigerator Double basin stainless steel sink (w/all hoses & drain lines replaced 2006) Moen removable spray faucet GE Profile stainless steel dishwasher

Miele 4 burner ceramic cook top Built in exhaust fan over cook top (rebuilt 2006) 20 x Cabinet

doors Port side Pantograph entry door 5 x Drawers Ceramic tile sole 9 x Overhead halogen mini spots L shaped settee to seat four 15" Toshiba flat screen TV Totevision Aft Deck color monitor Portside sliding windows (serviced & resealed 2006)

## Pilothouse

The yacht's Pilothouse is accessed via the main starboard side Companionway and is five steps up from the main deck. The Helm is on centerline behind a swivel upholstered helm chair and to the starboard side is a great chart flat area as well as bookcases, manual storage lockers, etc. To the port side of the Helm is a functional two drawer desk with burl wood top and storage below for computer towers. Aft is a four person raised leather settee with a hi lo drop leaf burl wood table. Aft is the yacht's signal flags, clock, barometer and hygrometer. Also in this area is the Pilothouse electrical panel, an Isignia AM/FM/CD stereo, a Clarion 12 disc CD changer for Flybridge stereo, stereo speakers, digital AC controls, 12 overhead halogen mini spots and a varnished teak plank sole. Five steps lead up the spacious Flybridge. Visibility in the Pilothouse is excellent. The forward side windows slide open for ventilation. The Helm area of CIPANGO's Pilothouse was substantially redesigned to allow for installation of up to date electronics. Equipment includes: (2) DDEC EDM's Furuno 15" color full function monitor w/keyboard Furuno RD 30 GPS navigator DDEC Electronics engine controls Naiad LCD stabilizer controls Trim tab indicators

Kobelt rudder angle indicator DDEC station active controls w/key starts Fuel transfer system monitor w/alarm, new 2006 Ritchie 6" magnetic compass Kobelt jog steering controls Furuno 12" Nav Net w/depth/plotter & 48 mile radar Variable speed bow thruster controls Northstar 941X GPS Icom M127 VHF 24V power outlet Furuno D Fax weather fax 24 volt bilge pump panel (2) Totevision monitors w/pan & tilt controls for Engine Room camera 8 Position video switch for (6) camera monitors ACR searchlight control Wiper controls Battery parallel switch Exhaust gas bypass controls Skanti HF/SSB receiver w/dedicated power system Robertson AP20 autopilot Dell CPU w/Nobeltec software VEI Marci 12 volt navigation computer w/Nobeltech software & wireless keyboard & mouse The Doghouse Area under the Pilothouse includes the following equipment: Scotsman "Clear Ice" icemaker Kenmore freezer GE freezer Dedicated compressor for toilet system Fluorescent lighting Sea Tel TV system (3) APU's for Sea Tel & computer Telular cell phone system

## Tenders

**Boat Deck** 2 x Zodiac 8 person life rafts w/hydrostatics release 2 x Throwable life rings w/lights Marquipt 220 volt 1000 lb. capacity hydraulic crane (new 2006) 2000 Model Yamaha Jet Ski w/chocks & cover 2000 Model Novurania RIB w/chocks & cover Boat Deck fresh water washdown Boat Deck shower 220 volt service outlets (GFCI protected) Tender includes: 50 hp Yamaha 4 stroke engine (new 2006) Console steering Compass Standard Horizon VHF Standard Horizon Depth finder Hummingbird graphic depth meter w/sea temp Bow rail

---

## Vessel Walkthrough

---

CIPANGO offers a great amount of amenities for both private and charter use. The spacious and inviting Aft Deck has walk around side decks up to the seating and sun lounge forward. The open plan Salon and Dining Salon creates a vast interior space. The raised Pilothouse offers the captain a commanding all weather Helm, a Day Head, larger than normal Galley and access to the Crew Cabins are further forward. The Master and nearly identical VIP Cabin has a private stair forward of the Dining Salon. The Queen and Twin Staterooms are accessed by separate stair in the Aft Salon. A great Flybridge with separate guest seating areas is accessed via the Pilothouse. **Salon** Entering via a pneumatic sliding door, the spacious Salon extends well forward and includes the adjacent Dining Salon. Immediately to starboard is a built in upholstered L shaped settee to seat six. Two small cherry and black galaxy granite tables lie in front of the sofa. Next forward is the Salon's entertainment center. It includes: Sony CD/DVD player DVP N5625P Sony Hi Fi stereo VCR SLV N77 Sony digital audio/video control center STR DE895 Pioneer Elite 300 disc CD/DVD player DV F07 RSQ video CD player for Karaoke SR222 Above the entertainment center is a gilded twin fixture wall sconce set upon a mirrored bulkhead. Next forward is a walk behind burl wood bar with a cube type refrigerator, Icerette icemaker, stainless bar sink, three cabinets, four drawers and a granite work surface. To port starting forward is a burl wood topped buffet. Next aft is an L shaped free standing sofa facing aft to seat three or four. The upholstery matches that of the aft sofa and there is a matching small table as well. Opposite the entertainment center are three burl wood drawers and a mirrored panel with gilded sconce light matches that to starboard. Next aft is a burl wood table with four loose chairs ideal for card games or cocktails. Furthest aft is an L-shaped cabinet hiding the steps to the aft accommodations and the Engine Room. Facing the aft settee mounted on the cabinet is a 32" Sony LCD TV. Overhead the Salon has a shallow tray type treatment with a mirrored border on vinyl panels. Seventeen halogen mini spots are arranged over the sofas, bars and tables. Drapes and opaque blinds cover the fixed and opening windows. Burl wood valances are lit from behind. Full drapes cover the aft sliding door and fixed clear side panel. Specially lit artwork in gilded frames, and custom woven carpet complete the high end décor of the Salon.

**Dining Salon** Just forward but open to the Salon is the Dining Salon. The aforementioned buffet houses pegged dinnerware and padded glassware storage in three cabinet doors. Six more cabinets going forward house additional storage. The forward bulkhead has five more cabinets with four additional to starboard. All of the storage cabinets have burl wood doors and tops. They completely surround the burl wood dining table that seats six to eight, offering storage not usually found on yachts of this size. The ceiling treatment has a deep tray with twelve halogen mini spots providing ample lighting. Additionally the forward bulkhead is mirrored and has two gilded sconce lights mounted on the mirror.

**Companionway** To starboard from the Dining Salon is the yacht's main deck Companionway. From this area are nine curved steps to the Master and VIP Cabins, access to the Pilothouse,

access to the large "Dog House" storage under the Pilothouse, access to the Day Head, the Galley and furthest forward the Crew Area. The Yacht's Day Head has a marble sole that matches the marble vanity top with under mount china sink. There are two cabinets in the vanity and a Microphor toilet. Two large ornate mirrors make the area seem larger than it actually is.

## Remarks

---

CIPANGO represents a relatively high volume European motoryacht that has been updated from stem to stern. She offers four suites with two of them nearly identical master cabins, plus crew for four. Ship's systems including generators, watermaker, engines, navigation electronics, wiring and of course all soft goods have been updated during the current ownership. An Atlas shore power converter system offers versite 50 or 60 Hz input power.

## Исключения

---

При продаже яхты исключаются личные вещи владельца.

## Отказ от ответственности

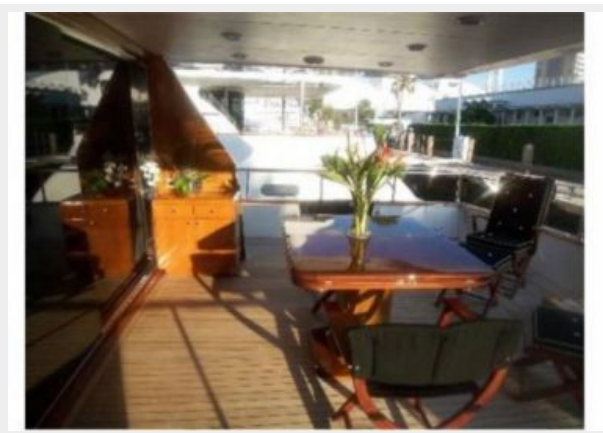
---

Компания предоставляет описание судна или яхты добросовестно, но не может гарантировать точность этой информации, а также не ручается за техническое состояние. Покупатель должен проинструктировать своих агентов или оценщиков исследовать представленную информацию более подробно, по собственному желанию. Продажа судна или яхты, изменение цены или снятие с продажи будет происходить без предварительного уведомления.

# ФОТОГРАФИИ



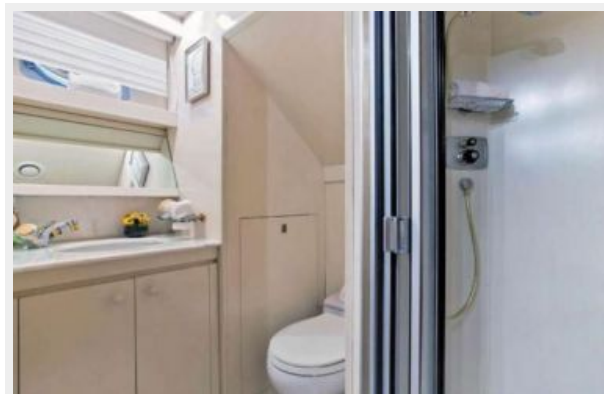
**Stern**

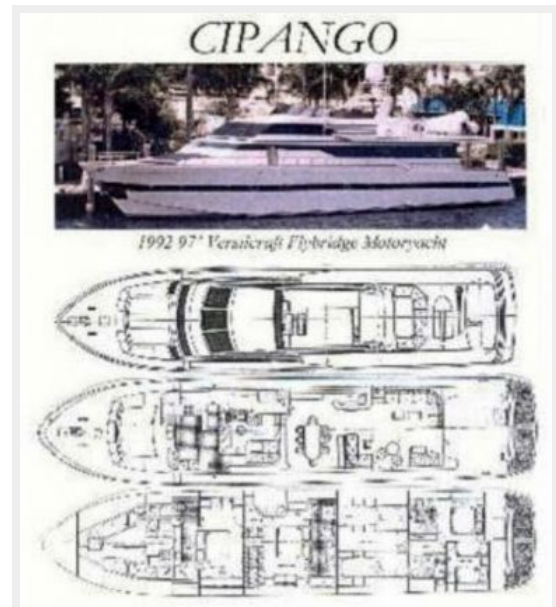
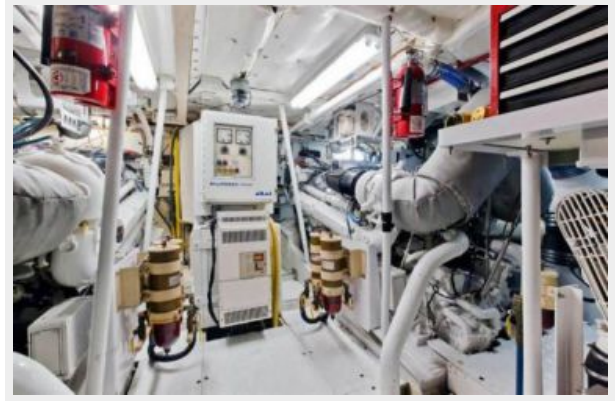












# КОНТАКТЫ

---

Андрей Шестаков (Andrey Shestakov) – ведущий яхтенный брокер отдела продаж яхт и судов компании Shestakov Yacht Sales Inc. Официальный представитель Shestakov Yacht Sales Inc. для русскоговорящих клиентов в центральном офисе компании в Майами/Форт Лодердейл/Флорида/США.

## Контактная информация

---

Email: [andrey@shestakovyachtsales.com](mailto:andrey@shestakovyachtsales.com)

Web: [shestakovyachtsales.com](http://shestakovyachtsales.com)

## Телефоны

---

Краснодарский край: **+7(918)465-66-44**

США, Майами, Флорида: **+1(954)274-4435**

## Время работы

---

Понедельник – Суббота: **9:00 - 21:00**  
EDT

Воскресенье: **Закрито**

## Адрес

---



Harbour Towne Marina, 850 NE 3rd St,  
STE 213, Dania, FL 33004