

PRETTY LADY — HARGRAVE



Builder: HARGRAVE

Year Built: 2003

Model: Motor Yacht

Price: PRICE ON APPLICATION

Location: United States

LOA: 81' 0" (24.69m)

Beam: 20' 0" (6.10m)

Max Draft: 5' 6" (1.68m)

Cruise Speed: 18 Kts. (21 MPH)

Max Speed: 22 Kts. (25 MPH)

Our experienced yacht broker, Andrey Shestakov, will help you choose and buy a yacht that best suits your needs **PRETTY LADY — HARGRAVE** from our catalogue. Presently, at Shestakov Yacht Sales Inc., we have a wide variety of yachts available on our sale's list. We also work in close contact with all the big yacht manufacturers from all over the world.

If you would like to buy a yacht **PRETTY LADY — HARGRAVE** or would like help answering any questions concerning purchasing, selling or chartering a yacht, please call **+1(954)274-4435**

TABLE OF CONTENTS

TABLE OF CONTENTS	2
SPECIFICATIONS	4
Overview	4
Basic Information	4
Dimensions	4
Speed, Capacities and Weight	4
Accommodations	5
Hull and Deck Information	5
Engine Information	5
DETAILED INFORMATION	6
Vessel Walk-Through	6
Aft deck	6
Salon	6
Galley	6
Day Head	7
Skylounge	7
Master Stateroom	7
Guest Staterooms	7
VIP Stateroom	7
Crew Quarters	7
Engine Room	8
Mechanical Equipment	8
Exterior Equipment	9
Interior Equipment	10
Appliances	10
Audio And Visual Equipment	10
Electronics	11
Remarks	11

Exclusions	11
Exclusions	11
Disclaimer	11
PHOTOS	12
Aft Deck with teak sole	12
Helm	13
en suite Master Head	14
CONTACTS	17
Contact details	17
Telephones	17
Office hours	17
Address	17

SPECIFICATIONS

Overview

“Pretty Lady” comes full circle in design elements with sleek angles inspired from original Jack Hargrave designed boats, and an impressive sky lounge topping the structure. The exterior aestheticism is exceeded only with the very special interior that features an elevator servicing all three levels of the boat. In building this boat, Hargrave began with a standard of excellence in styling, construction specifications, name brand equipment and value. Hargrave ended with a yacht that will exceed your expectations.

Basic Information

Category: Motor Yacht

Sub Category: Pilothouse

Model Year: 2003

Year Built: 2003

Country: United States

Vessel Top: Enclosed Pilothouse

Dimensions

LOA: 81' 0" (24.69m)

LWL: 71' 0" (21.64m)

Beam: 20' 0" (6.10m)

Max Draft: 5' 6" (1.68m)

Clearance: 30' 6" (9.30m)

MFG Length: 81' 0" (24.69m)

Speed, Capacities and Weight

Cruise Speed: 18 Kts. (21 MPH)

Max Speed: 22 Kts. (25 MPH)

Water Capacity: 600 Gallons

Holding Tank: 100 Gallons

Fuel Capacity: 3000 Gallons

Accommodations

Total Cabins: 4

Total Berths: 6

Sleeps: 8

Total Heads: 4

Captain Cabin: True

Crew Cabin: 1

Crew Berths: 2

Crew Sleeps: 2

Crew Heads: 1

Hull and Deck Information

Hull Material: Fiberglass

Deck Material: Fiberglass

Hull Color: White

Engine Information

Engines: 2

Manufacturer: Caterpillar

Model: 3412

Engine Type: Inboard

Fuel Type: Diesel

DETAILED INFORMATION

Vessel Walk-Through

PRICE REDUCTION FEBRUARY 2015!! \$2,250,000 Pretty Lady is a luxuriously appointed yacht that provides unimpeded wheelchair access from dock to Sky Lounge. Using clever design and thoughtful installation, the changes and additions which make this yacht so accessible have had minimal impact on the yacht, in fact, a casual visitor might not even notice most of them.

The main deck has an extremely spacious salon with a conservative motif comprised of neutral colors and sensible furniture. The salon has ample room for the owner to maneuver easily around his masterpiece while enjoying the company of family and friends. Cherry wood with burl accents adds warmth to the spacious floor plan. She sleeps eight people in four gorgeous staterooms. The master stateroom features an elevator entrance to port with enough room for an en suite head and walk-in closet. Built as one of the only entirely handicap accessible motoryachts of this size range, "Pretty Lady" is truly unusual. When this extraordinary vessel was unveiled in 2003 it complied with every industry standard from the DNV to the ABYC.

Aft deck

The covered aft deck features a settee with a teak dining table and chairs for al fresco meals.

A set of wing controls are built into the starboard corner of the deck to simplify docking.

Salon

The salon is spacious, with a couch and leather recliner to port, facing a 32 inch plasma pop-up television in the starboard cabinet. Just forward, a granite topped bar has three bucket chairs.

The high gloss Cherry wood with Burl accents, matching grain patterns, full crown moldings and tray ceiling treatments reflect Hargrave's impeccable joinerwork.

Most visitors won't pay attention to the forward port corner, which has what seems to be an oversized glass-front china cabinet with a titled map of the Caribbean above the buffet area. In reality, this is a neatly disguised elevator that starts on the lower level in the master suite and opens to both the salon and sky lounge to provide full access to each deck.

Not only is the elevator unobtrusive, it's also beautifully finished, from the diamond pattern glass doors, to the inlaid flooring, to the glossy Cherry wood that lines the elevator shaft itself.

Galley

The galley has more than enough working space on the granite counters, which are surrounded by Cherry wood cabinets and GE Profile appliances. Forward there is a wraparound dinette.

Day Head

An oversized day head is forward and to starboard, with an extra wide pocket door and room inside to maneuver a wheelchair.

Skylounge

The Sky Lounge layout allows 360 degree vision from the twin helm chairs. The helm features a full array of flat panel Ratheon electronics which are set in a burlled instrument panel.

A curved sofa is aft to port and a bucket chair with ottman is just forward of the TV cabinet to starboard, while a day head is in the aft corner.

An electric sliding door opens to the capacious boat deck. there is a wet bar in the forward corner and a U-shaped settee with table to port.

Master Stateroom

The large full-beam Master has a wall of bureau drawers lining the port side under sliding shji screens and a walk-in closet starboard.

The Master Head is located forward behind double doors with extra space and an oversized shower.

Guest Staterooms

Two Guest staterooms are located port and starboard of the central passageway, each with twin berths, en suite heads with showers and full entertainment systems, and cheerfully striped Roman shades.

VIP Stateroom

Forward is the VIP Stateroom with an en suite head with shower and ample storage.

Crew Quarters

Entrance to the comfortable Crew Quarters is through the transom. There are two bunks and a private head.

Engine Room

The Engine Room is spacious and has been double insulated for exceptional quiet.

Powered by Caterpillar 3412 engines with 1400 horsepower each and a pair of 32 Kw Northern Lights, Pretty Lady is very designed for tropical cruising.

Pretty Lady has Naiad stabilizers and HPS bow thruster. Redunancy has been built in, with hydraulic pumps on each engine, dual Racor filters, twin SeaFire fire extinguisher systems, and four separate CruiseAir chilled water A/C systems.

Mechanical Equipment

1 7/8 Deckfills for fuel and water

V-Shaped Keel w/ Longitudinal stringers Fiberglass hand laid hull & stringers vacuum bagged w/foam core reinforcement Stringers bonded to hull encapsulated in several layers of glass cloth & resin Deck & superstructure w/ foam cored reinforcement under fiberglass FRP Bulkheads Interior structural components bonded to hull including bulkheads and frames FRP Main Deck and floors Non-Skid on main exterior decks Stainless Steel exterior Portholes Fiberglass swim platform w/ ladder All handrails, stanchions and fittings made of stainless steel 316 alloy 1 1/2" Stainless Steel handrail w/ 1 1/2" stanchions Stainless steel cleats (8) Stainless steel 316 plow anchor (150lb),w/300' chain & Nilsson V3500 24v windlass Stainless Steel frame hatch on fore deck w/ grey lexan cover Dual chrome plated horn Built in hand held shower on swim platform 3-1/2" stainless steel 617 shafts equivalent to Aquamet 22 Zincs on shafts, rudders and transom as needed 4 Blade Faster bronze propellers Main bronze struts Emergency tiller Stainless steel rudders Fiberglass engine beds, bonded to hull w/ load distributed on steel channels Single layer of sound and heat insulation in Engine room bulkhead fwd, aft & ceiling

Double Insulated Engine Room Easy access to all helm dashboard controls and gauges Remote windlass operation from Pilothouse and Flybridge Raycor 1000 FG fuel filter/water separator for each engine Hydraulic Bow Thruster HPS-36hp Hydraulic steering by Hynautic, adaptable to auto-pilot Engine Alarm System for low pressure & high temperature supplied by Cat Four (4) Jabsco Engine compartment blowers 24v lights and 110v power receptacles in Engine room (4 each)

Custom underwater engine exhaust w/idle by-pass High volume 24v Groco Water Pressure Pump (30lb) 100 Gallon Holding Tank w/ indicator Fresh water filling faucet in Engine room Leviton High quality sockets and switches in all rooms 220v, 110v and 60Hz Electrical System Color coded wiring throughout Custom -built Helm Console Lovett Sump Pumps (4) Y-Valve for

dockside pump out (8) 200 amp/hr batteries for engine & ship power (3) Professional Mariner battery charger Separate 120 amp/hr battery for generator All batteries in FRP battery boxes Main electrical panel w/ separate AC Power control and circuit breaker panel 110 volt duplex receptacles located throughout vessel, including engine room Indirect rope lighting under valances in salon staterooms, sky lounge and galley Vinyl covered ceiling design throughout Italian door handle package Push/Pull German latches Removable white vinyl headliner panel system Recessed Tray ceiling in salon Lights in closet on micro switches Canaloupe 24v ceiling lights Dual track segmented curtains or Roman Shades in each stateroom, main salon & galley Bed on Hydraulics in Master and VIP Large Storage areas forward deck Boat panel indicator Granite counter top in galley Marble or Granite counter top in all bathrooms Full Walk-in Shower or Tub in master Fiberglass main and lower decks Stainless steel aft deck door frame Black Textile front window covers Flybridge Vinyl seat covers Helm and Passenger seat on Fly Bridge Lexan hatch from aft deck to Fly Bridge deck Cat instruments at helm (Tach/Oil Pressure/Engine Temp/TransPressure/Hrs) City water inlets (2) TV / telephone inlet (2) Fresh water washdown (3) three locations - Bow / aft deck / flybridge Sea Chest Groco Seastrainers White perforated insulation panels in Engine Room (3) Windshield wipers with blades

Custom Locker On Aft Deck To Store Boarding Ladder (2) Northern Lights 32KW Dolphin AC/DC Light Transformer 110/24V (3) Newmar Converter 50A 24V/ 12V Watertight Bulkheads In Engine Room Naiad Stabilizer System Model 302 With 9.0 SW.FT. FIN W/Multi-Ses 2000 Double stabilizer & bow thruster backup pump on back of port & starboard engine Double Racor Filters On Main Engines SeaFire FE-1500M Fire Extinguisher System (2 Sets) Oberdorfer #990RHN76 DC24V Fuel Transfer Pump Glendining CABLEMASTER System (1) 100AMP (Port & STBD Outlets) W/3 Wire 125' Cable Tide Strong Marine Dripless Shaft Logs Elevator And Aft Deck Wheelchair Lift Interior & Exterior Quicklift Elevator Mechanism Exterior Quicklift Wheelchair Lift On Aft Deck Cruise Air Chilled Water System 4 Three Ton Units Custom Dayhead On Skylounge Deck Kahlenberg DOA Deluxe Stack Trumpet Air Horns Dolphin Battery Chargers - 1 X 80AMP 24V - 1 X 30AMP 24V - 1X 30AMP 12V Safety Handrail At Both Sides In E/R 5 Blade Faster Propellers Raise Height Of Heads Up To 20.5" In Master, Day Head And Skylounge Smoke Detectors (9) Units w/ 4 Stations & Two (2) Temp, in Engine Room & Galley Two Additional Fluorescent Lights In E/R bringing the total to 4 Quicklift 1600 lb.Davit Safety Package-Life Jackets/Fenders/Fire Extinguishers/Dock Lines/Flares/Dual plug phone/tv cord Marquipt Sea Stairs Spectra 1,000 GPD Water Maker Avon Life Raft

Exterior Equipment

Extra 2-3/8" Stainless Steel Oval Hull Banding W/Wood Insert (4) Flood Lights At Aftdeck As Well As Boat Deck 10" Fixed, Ballard Cleats At Swim Platform S/S Ladder From BOA Deck To Roof On Skylounge (4) 1-1/2" "U" Shape Stanchions At Swim Platform Aft Deck Teak Table With Inlay Aft Deck Ramp For Wheelchair Access From Aft Deck To Salon Wet Bar On Aft Deck W/Sink FRP Aft Deck Bench Seating w/Table Aft Deck Teak Chairs (3) Recess Spring Line Cleats For Port And Starboard Side Of Aft Deck Mast On Top Of Radar Arch For Second Radar Eight (8) Exterior Lights On Fore Deck Raytheon RL 80 C Color Display 10" LCD Screen,

Radar/Plotter Raytheon 11S Radar Antenna 10kw Raytheon Raynav 300 GPS WAAS Technology Receiver, Display & Antenna x 2 Lilly Basic Stainless GPS Pipe Mount for Arch or Hard Top x 2 Standard Spectrum+ VHF Concord Hailer Horn 40 Watt with Listen Back x 2 Digital 8' VHF Antenna High Gloss Finish Lilly Stainless Ratchet Mount Adjustable Antenna Mounting Hardware Raytheon ST 60 Depth Display Second Station Raytheon Bronze Stem ST60 5.6" Ducer w/Fairing Block x 2 Simrad AP 20 w/RPU 80 Pump and Waterproof Display and J300x

Interior Equipment

Cherry Wood Interior w/Burl Accents (7) Headhunter Heads (2) Automatic Aft Deck And Skylounge Sliding Door W/Sensor And Manual Controls Vimar Switches And Outlets + (1) Dimmer In Skylounge Shoji Screen In Master Cabin And Bathroom Lacquer Shower (5) Staterooms (3) Barrell Style Bar Stools In Main Salon Kohler K-6585 Cast Iron Sink Grohe Euro Plus II 33939KOO Black Faucet Frosted Glass Elevator Door W/Clear Diamond Design And Cherry Frame In Main Salon And Master Stateroom Granite Top Shower Seat In Bathroom Of Port / STBD Guest Cabin And Master / Crew Cabins Granite Counter Top For Main Salon Bar Upgrade All Standard Sinks Other Than Galley to Kohler Crown Moulding In Main Salon Majilite Upholstered Walls In Lower Accomodations (Fabric & Labor) Pullman In Aft Crew (5) Stereo-AM/FM/CD Players w/Speakers In Guest Cabins x 2, VIP, Skylounge & Crew Cabin + Install Owner Supplied Stereo System For Salon & Master Stateroom One Helm Seat Sliding Mechanism In Skylounge

Appliances

GE Profile PSI23NCNBB Refrigerator In Galley GE Profile JP938BCBB Cook Top W/JTP18BDBB Oven GE Profile JVM1490BD Microwave GE Profile PDW7300GBB Dishwasher GE GFC720F Black Disposal U-Line Combo 29FFW Fridge/Ice Maker X 2 U-Line 15WC Black Wine Cooler GE WSM2420TWW White Washer/Dryer Jenn-Air JED7430AAB Black Grill W/Cover

Audio And Visual Equipment

4 x 13" TV/VCR in VIP, Twins

32" Sony Plasma TV in Main Salon Lift for Plasma TV Sony 25" TV/VCR/DVD in Skylounge Sony DVD/CD Player Sony Tuner

Simrad RFC 35 R Exchange to High Performance Fluxgate Danforth 5" Compass Samsung 170 MP LCD Display 17", 110v, LCD Screen w/Tuner Samsung 150 MP LCD Display 15", 110v, LCD Screen w/Tuner for Elbex Elbex B&W Camera Installation Cost For (1) Cameras In E/R+ 1 X Controller

Concord Perko 10" 850k cp, White, Manual Control Panasonic 624 KSU Phone System
Panasonic KXT 7020 Phone Speaker Phone w/o Display x 8 Installation Diagram for electronics
Panasonic KXT 7030 Phone System Speaker Phone w/Display

Electronics

Concord 2 Gig Pen4 Tower 256MB Ram, 60g HD, DVD CD, Netcard, 56K Modem Concord
Computer Cables And Interunit Cables and Connectors For Installation Concord Cordless
Key/Mouse RF Controller Keyboard and Mouse Non Waterproof Concord RF Handheld Mouse
Cordless 50 Ft. Range Concord VGA To NTSC Converts computer Video To Television Video
Nobeltec Dongle Required For Passport Charts Outside Of USA Waters Stat Power 24v Pure
Sine 1000w for Computer Equipment KVH Tracvision 4 DVB Full Motion Without Gyro Sony A65
DSS Receiver w/RF Remote x 2 Concord SAT Multiplexer Concord Modulator Quad Misc
Program Phone System and Label Extensions for Auto Functions x 8 Seatel 2100R WO RF
Cable Wavecall Sat Phone w/Remote Ant Seatel TX/RX 35' Cable for 2100R Pair for 2100R
Seatel 2100 R SS Antenna Mount Heavy Duty White Starboard and Stainless Flange

Remarks

NEW PAINT 2012!

Exclusions

Owner's personal effects, art work and statues are not included. A detailed list is available prior to any written offer.

Exclusions

Owner's personal belongings.

Disclaimer

The Company offers the details of this vessel or yacht in good faith but cannot guarantee or warrant the accuracy of this information nor warrant the condition of the vessel. A buyer should instruct his representatives, agents, or his surveyors, to investigate such details as the buyer desires validated. This vessel or yacht is offered subject to prior sale, price change, or withdrawal without notice.

PHOTOS

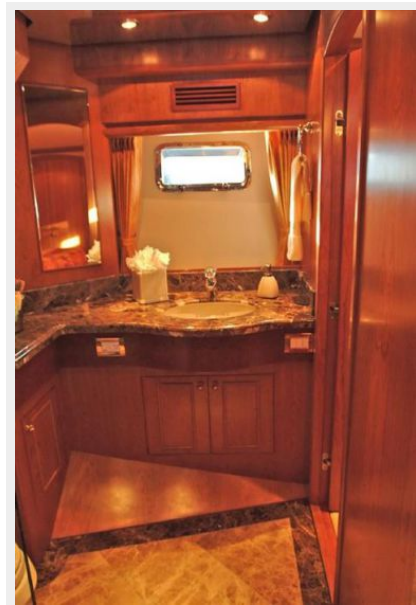
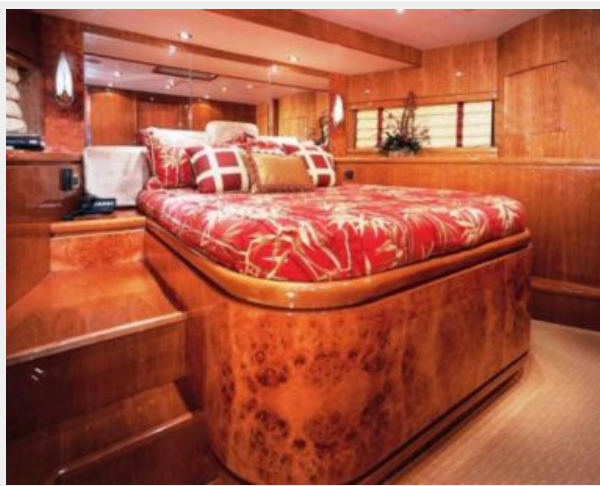
Aft Deck with teak sole



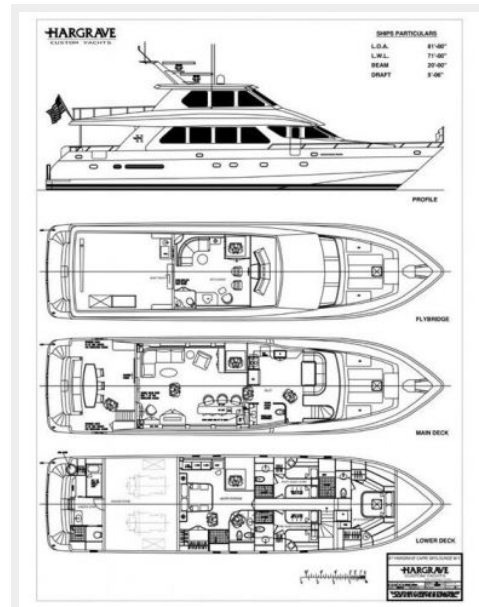
Helm



en suite Master Head







CONTACTS

Andrey Shestakov, leading yacht broker of the sales department of Shestakov Yacht Sales Inc. Shestakov Yacht Sales Inc., the official representative of the Miami/Fort Lauderdale FL headquarters.

Contact details

Email: andrey@shestakovyachtsales.com

Web: shestakovyachtsales.com/en/

Telephones

USA: +1(954)274-4435

Office hours

Monday – Saturday: **9:00 - 21:00** EDT

Sunday: **closed**

Address



Harbour Towne Marina, 850 NE 3rd St,
STE 213, Dania, FL 33004