

## SAGAMAR — HAKVOORT



**Builder:** HAKVOORT

**Year Built:** 2002

**Model:** Motor Yacht

**Price:** PRICE ON APPLICATION

**Location:** United States

**LOA:** 110' 7" (33.70m)

**Beam:** 26' 11" (8.20m)

**Max Draft:** 8' 7" (2.60m)

**Cruise Speed:** 10 Kts. (12 MPH)

**Max Speed:** 11 Kts. (13 MPH)

Our experienced yacht broker, Andrey Shestakov, will help you choose and buy a yacht that best suits your needs **Sagamar — HAKVOORT** from our catalogue. Presently, at Shestakov Yacht Sales Inc., we have a wide variety of yachts available on our sale's list. We also work in close contact with all the big yacht manufacturers from all over the world.

If you would like to buy a yacht **Sagamar — HAKVOORT** or would like help answering any questions concerning purchasing, selling or chartering a yacht, please call **+1(954)274-4435**

---

# TABLE OF CONTENTS

---

|                              |    |
|------------------------------|----|
| TABLE OF CONTENTS            | 2  |
| SPECIFICATIONS               | 3  |
| Overview                     | 3  |
| Basic Information            | 4  |
| Dimensions                   | 4  |
| Speed, Capacities and Weight | 4  |
| Accommodations               | 4  |
| Hull and Deck Information    | 5  |
| Engine Information           | 5  |
| DETAILED INFORMATION         | 6  |
| Additional Info              | 6  |
| Exclusions                   | 7  |
| Disclaimer                   | 7  |
| PHOTOS                       | 8  |
| Profile                      | 8  |
| CONTACTS                     | 18 |
| Contact details              | 18 |
| Telephones                   | 18 |
| Office hours                 | 18 |
| Address                      | 18 |

---

# SPECIFICATIONS

---

## Overview

---

Lying in Fort Lauderdale for the Winter.

### **Not for Sale to U.S. Residents while in U.S. Waters.**

SAGAMAR is a carefully conceived and planned true world cruising superyacht with full MCA certification.

Not only the product of work by the naval architect, interior designer and yard, but also greatly benefiting from the input from a knowledgeable and experienced owner and highly capable project manager, both of whom brought valuable input throughout the design and build process.

Her technical outfitting is chosen such that the vessel is capable of transatlantic and transpacific cruising carrying 55000 liters of fuel.

Another major aspect when designing SAGAMAR was safety and on top of Lloyds/MCA requirements a sprinkler system was installed throughout the accommodation.

Twin Caterpillar 3406 engines ensure low maintenance economic propulsion. The two Northern Lights 80 kW generators with water and gas separated exhausts give the yacht quiet and clean power plants.

Also noise, as to many owners was a major concern when building SAGAMAR. We achieved noise levels at anchor with a generator and AC running well under 40 dB(A) anywhere in the Yacht. At cruising speed even in the spaces next to the E.R noise levels are under 57 dB(A) allowing guests to sleep while making a passage.

Within a traditional double-ender configuration, the yacht provides comfortable accommodation for eight guests, with a main deck master stateroom, a generous VIP stateroom and a further two twin cabins. The private owner's suite includes a dedicated study, and the layout allows for discrete crew access to the private quarters.

Accommodation exists for six crew in three separate cabins with ensuite shower rooms. Provision has also been made for a dedicated laundry and proper walk-in fridge and freezer rooms in line with the planned world cruising programme. An unusually large and open crew mess allows the crew to relax separately in comfort.

The traditional panelled interior has been achieved using a combination of flat panels and mouldings for maximum effect with minimum weight - a truly cost effective solution. Carefully selected teak for the panelling contrasts with silk panelling and interesting overheads incorporating a diverse selection of lighting levels and patterns.

One of the yacht's most attractive features is an elegant staircase within a triple height atrium

capped by a handsome skylight, bringing light through the centre of the yacht at all levels.

To maximise apparent space and enjoy views of the centre atrium from the main social spaces, large bevelled edge glazed sliding doors open up the already handsome saloon to the beautifully lit atrium, creating a uniquely integrated interior - quite spectacular for a yacht of this size. Similar bevelled edge glazed panelled doors are used to front the numerous bookshelves and display cabinets.

## Basic Information

---

**Category:** Motor Yacht

**Model Year:** 2002

**Year Built:** 2002

**Country:** United States

## Dimensions

---

**LOA:** 110' 7" (33.70m)

**Beam:** 26' 11" (8.20m)

**Max Draft:** 8' 7" (2.60m)

## Speed, Capacities and Weight

---

**Cruise Speed:** 10 Kts. (12 MPH)

**Cruise Speed Range:** 5000

**Max Speed:** 11 Kts. (13 MPH)

**Max Speed Range:** 4500 Kts.

**Gross Tonnage:** 271 Pounds

**Water Capacity:** 2377.548468 Gallons

**Fuel Capacity:** 15586.151068 Gallons

**Fuel Consumption:** 23.77548468 Gallons

## Accommodations

---

**Total Cabins:** 4

**Sleeps:** 8

**Crew Sleeps:** 6

---

## Hull and Deck Information

---

**Hull Material:** Steel

**Deck Material:** Teak

**Hull Configuration:** Full Displacement

**Exterior Designer:** Willem de Vries Lentsch

**Interior Designer:** Ken Freivokh Design

---

## Engine Information

---

**Engines:** 2

**Manufacturer:** Caterpillar

**Model:** 3406-E

**Engine Type:** Inboard

**Fuel Type:** Diesel

---

# DETAILED INFORMATION

---

## Additional Info

---

Heading to the West Mediterranean. SAGAMAR is a carefully conceived and planned true world cruising superyacht with full MCA certification.

Not only the product of work by the naval architect, interior designer and yard, but also greatly benefiting from the input from a knowledgeable and experienced owner and highly capable project manager, both of whom brought valuable input throughout the design and build process.

Her technical outfitting is chosen such that the vessel is capable of transatlantic and transpacific cruising carrying 55000 liters of fuel.

Another major aspect when designing SAGAMAR was safety and on top of Lloyds/MCA requirements a sprinkler system was installed throughout the accommodation.

Twin Caterpillar 3406 engines ensure low maintenance economic propulsion. The two Northern Lights 80 kW generators with water and gas separated exhausts give the yacht quiet and clean power plants.

Also noise, as to many owners was a major concern when building SAGAMAR. We achieved noise levels at anchor with a generator and AC running well under 40 dB(A) anywhere in the Yacht. At cruising speed even in the spaces next to the E.R noise levels are under 57 dB(A) allowing guests to sleep while making a passage.

Within a traditional double-ender configuration, the yacht provides comfortable accommodation for eight guests, with a main deck master stateroom, a generous VIP stateroom and a further two twin cabins. The private owner's suite includes a dedicated study, and the layout allows for discrete crew access to the private quarters.

Accommodation exists for six crew in three separate cabins with ensuite shower rooms. Provision has also been made for a dedicated laundry and proper walk-in fridge and freezer rooms in line with the planned world cruising programme. An unusually large and open crew mess allows the crew to relax separately in comfort.

The traditional panelled interior has been achieved using a combination of flat panels and mouldings for maximum effect with minimum weight - a truly cost effective solution. Carefully selected teak for the panelling contrasts with silk panelling and interesting overheads incorporating a diverse selection of lighting levels and patterns.

One of the yacht's most attractive features is an elegant staircase within a triple height atrium capped by a handsome skylight, bringing light through the centre of the yacht at all levels.

To maximise apparent space and enjoy views of the centre atrium from the main social spaces, large bevelled edge glazed sliding doors open up the already handsome saloon to the beautifully

lit atrium, creating a uniquely integrated interior - quite spectacular for a yacht of this size. Similar bevelled edge glazed panelled doors are used to front the numerous bookshelves and display cabinets.

## Exclusions

---

Owner's personal belongings.

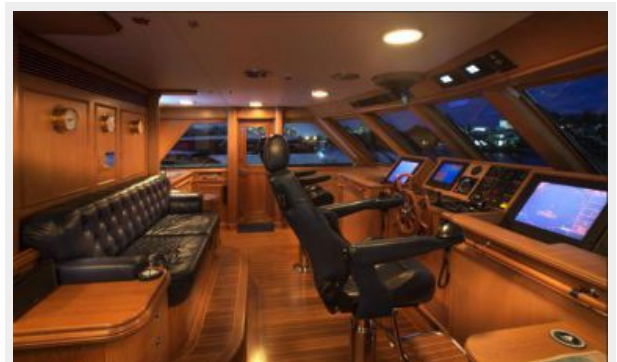
## Disclaimer

---

The Company offers the details of this vessel or yacht in good faith but cannot guarantee or warrant the accuracy of this information nor warrant the condition of the vessel. A buyer should instruct his representatives, agents, or his surveyors, to investigate such details as the buyer desires validated. This vessel or yacht is offered subject to prior sale, price change, or withdrawal without notice.

# PHOTOS

## Profile







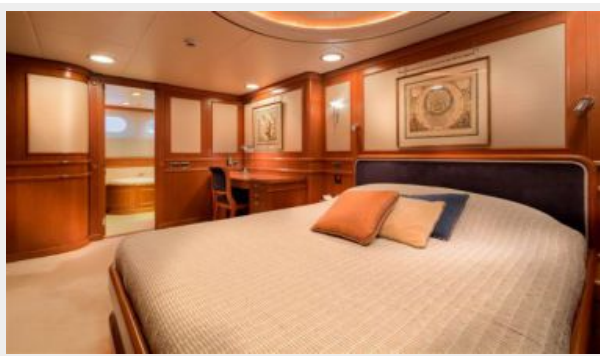






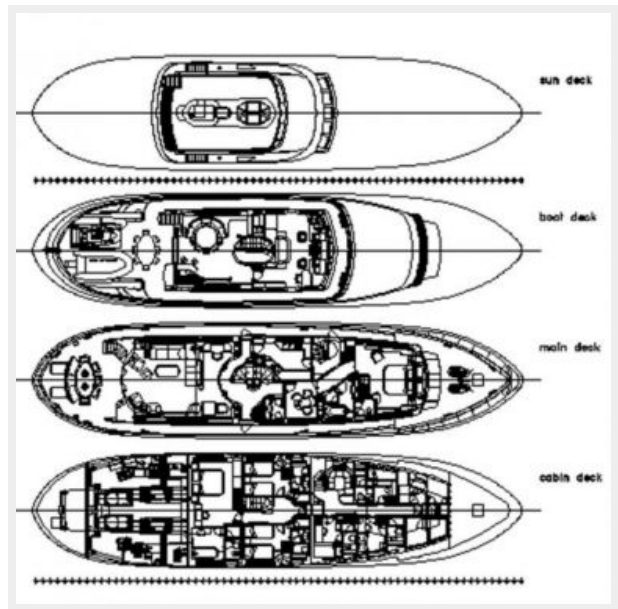
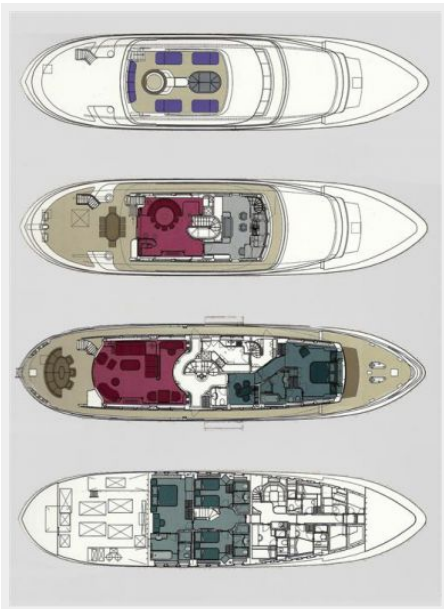












# CONTACTS

---

Andrey Shestakov, leading yacht broker of the sales department of Shestakov Yacht Sales Inc. Shestakov Yacht Sales Inc., the official representative of the Miami/Fort Lauderdale FL headquarters.

## Contact details

---

Email: [andrey@shestakovyachtsales.com](mailto:andrey@shestakovyachtsales.com)

Web: [shestakovyachtsales.com/en/](http://shestakovyachtsales.com/en/)

## Telephones

---

USA: +1(954)274-4435

## Office hours

---

Monday – Saturday: **9:00 - 21:00** EDT

Sunday: **closed**

## Address

---



Harbour Towne Marina, 850 NE 3rd St,  
STE 213, Dania, FL 33004