

SAGAMAR — HAKVOORT



Судостроитель: HAKVOORT

Год постройки: 2002

Модель: Моторная яхта

Цена: **ЦЕНА ЯХТЫ ПО ЗАПРОСУ**

Местонахождение: United States

Длина общая: 110' 7" (33.70m)

Ширина: 26' 11" (8.20m)

Макс. осадка: 8' 7" (2.60m)

Крейс. скорость: 10 Kts. (12 MPH)

Макс. скорость: 11 Kts. (13 MPH)

Купить **Sagamar — HAKVOORT** а также выбрать подходящую вам яхту из нашего каталога яхт вам поможет опытный яхтенный брокер Андрей Шестаков. На сегодняшний день компания **Shestakov Yacht Sales Inc.** имеет большое количество яхт в собственном списке продаж, а также тесно сотрудничает со всеми крупными яхтенными производителями по всему миру.

Для того чтобы купить яхту **Sagamar — HAKVOORT** а также проконсультироваться по любому вопросу связанному с покупкой, продажей, чартером яхт позвоните по телефону **+7(918)465-66-44**.

ОГЛАВЛЕНИЕ

ОГЛАВЛЕНИЕ	2
ХАРАКТЕРИСТИКИ	3
Обзор	3
Основная информация	4
Размеры	4
Скорость, вместимость и масса	4
Размещение	4
Корпус и палуба	5
Информация о двигателе	5
ПОДРОБНОЕ ОПИСАНИЕ	6
Additional Info	6
Исключения	7
Отказ от ответственности	7
ФОТОГРАФИИ	8
Profile	8
КОНТАКТЫ	18
Контактная информация	18
Телефоны	18
Время работы	18
Адрес	18

ХАРАКТЕРИСТИКИ

Обзор

Lying in Fort Lauderdale for the Winter.

Not for Sale to U.S. Residents while in U.S. Waters.

SAGAMAR is a carefully conceived and planned true world cruising superyacht with full MCA certification.

Not only the product of work by the naval architect, interior designer and yard, but also greatly benefiting from the input from a knowledgeable and experienced owner and highly capable project manager, both of whom brought valuable input throughout the design and build process.

Her technical outfitting is chosen such that the vessel is capable of transatlantic and transpacific cruising carrying 55000 liters of fuel.

Another major aspect when designing SAGAMAR was safety and on top of Lloyds/MCA requirements a sprinkler system was installed throughout the accommodation.

Twin Caterpillar 3406 engines ensure low maintenance economic propulsion. The two Northern Lights 80 kW generators with water and gas separated exhausts give the yacht quiet and clean power plants.

Also noise, as to many owners was a major concern when building SAGAMAR. We achieved noise levels at anchor with a generator and AC running well under 40 dB(A) anywhere in the Yacht. At cruising speed even in the spaces next to the E.R noise levels are under 57 dB(A) allowing guests to sleep while making a passage.

Within a traditional double-ender configuration, the yacht provides comfortable accommodation for eight guests, with a main deck master stateroom, a generous VIP stateroom and a further two twin cabins. The private owner's suite includes a dedicated study, and the layout allows for discrete crew access to the private quarters.

Accommodation exists for six crew in three separate cabins with ensuite shower rooms. Provision has also been made for a dedicated laundry and proper walk-in fridge and freezer rooms in line with the planned world cruising programme. An unusually large and open crew mess allows the crew to relax separately in comfort.

The traditional panelled interior has been achieved using a combination of flat panels and mouldings for maximum effect with minimum weight - a truly cost effective solution. Carefully selected teak for the panelling contrasts with silk panelling and interesting overheads incorporating a diverse selection of lighting levels and patterns.

One of the yacht's most attractive features is an elegant staircase within a triple height atrium

capped by a handsome skylight, bringing light through the centre of the yacht at all levels.

To maximise apparent space and enjoy views of the centre atrium from the main social spaces, large bevelled edge glazed sliding doors open up the already handsome saloon to the beautifully lit atrium, creating a uniquely integrated interior - quite spectacular for a yacht of this size. Similar bevelled edge glazed panelled doors are used to front the numerous bookshelves and display cabinets.

Основная информация

Тип судна: Моторная яхта

Модельный год: 2002

Год постройки: 2002

Страна: United States

Размеры

Длина общая: 110' 7" (33.70m)

Ширина: 26' 11" (8.20m)

Макс. осадка: 8' 7" (2.60m)

Скорость, вместимость и масса

Крейс. скорость: 10 Kts. (12 MPH)

Дальность на крейсерской скорости:
5000

Макс. скорость: 11 Kts. (13 MPH)

Дальность на макс. скорости: 4500 Kts.

Чистый вес: 271 Pounds

Вместимость воды: 2377.548468 Gallons

Объем топливного бака: 15586.151068
Gallons

Расход топлива: 23.77548468 Gallons

Размещение

Всего кают: 4

Спальные места: 8

Спальных мест экипажа: 6

Корпус и палуба

Материал корпуса: Steel

Материал палубы: Teak

Комплектация корпуса: Full
Displacement

Дизайнер экстерьера: Willem de Vries
Lentsch

Дизайнер интерьера: Ken Freivokh
Design

Информация о двигателе

Двигатели: 2

Производитель: Caterpillar

Модель: 3406-E

Тип двигателя: Inboard

Тип топлива: Diesel

ПОДРОБНОЕ ОПИСАНИЕ

Additional Info

Heading to the West Mediterranean. SAGAMAR is a carefully conceived and planned true world cruising superyacht with full MCA certification.

Not only the product of work by the naval architect, interior designer and yard, but also greatly benefiting from the input from a knowledgeable and experienced owner and highly capable project manager, both of whom brought valuable input throughout the design and build process.

Her technical outfitting is chosen such that the vessel is capable of transatlantic and transpacific cruising carrying 55000 liters of fuel.

Another major aspect when designing SAGAMAR was safety and on top of Lloyds/MCA requirements a sprinkler system was installed throughout the accommodation.

Twin Caterpillar 3406 engines ensure low maintenance economic propulsion. The two Northern Lights 80 kW generators with water and gas separated exhausts give the yacht quiet and clean power plants.

Also noise, as to many owners was a major concern when building SAGAMAR. We achieved noise levels at anchor with a generator and AC running well under 40 dB(A) anywhere in the Yacht. At cruising speed even in the spaces next to the E.R noise levels are under 57 dB(A) allowing guests to sleep while making a passage.

Within a traditional double-ender configuration, the yacht provides comfortable accommodation for eight guests, with a main deck master stateroom, a generous VIP stateroom and a further two twin cabins. The private owner's suite includes a dedicated study, and the layout allows for discrete crew access to the private quarters.

Accommodation exists for six crew in three separate cabins with ensuite shower rooms. Provision has also been made for a dedicated laundry and proper walk-in fridge and freezer rooms in line with the planned world cruising programme. An unusually large and open crew mess allows the crew to relax separately in comfort.

The traditional panelled interior has been achieved using a combination of flat panels and mouldings for maximum effect with minimum weight - a truly cost effective solution. Carefully selected teak for the panelling contrasts with silk panelling and interesting overheads incorporating a diverse selection of lighting levels and patterns.

One of the yacht's most attractive features is an elegant staircase within a triple height atrium capped by a handsome skylight, bringing light through the centre of the yacht at all levels.

To maximise apparent space and enjoy views of the centre atrium from the main social spaces, large bevelled edge glazed sliding doors open up the already handsome saloon to the beautifully

lit atrium, creating a uniquely integrated interior - quite spectacular for a yacht of this size. Similar bevelled edge glazed panelled doors are used to front the numerous bookshelves and display cabinets.

Исключения

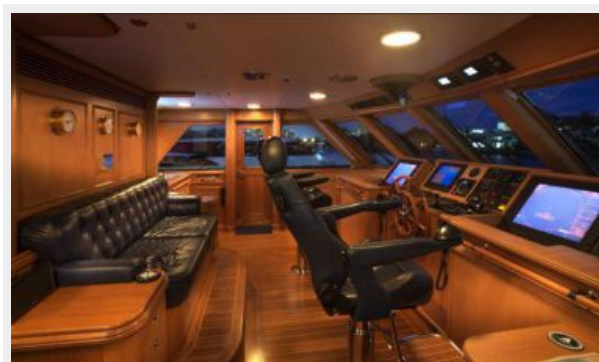
При продаже яхты исключаются личные вещи владельца.

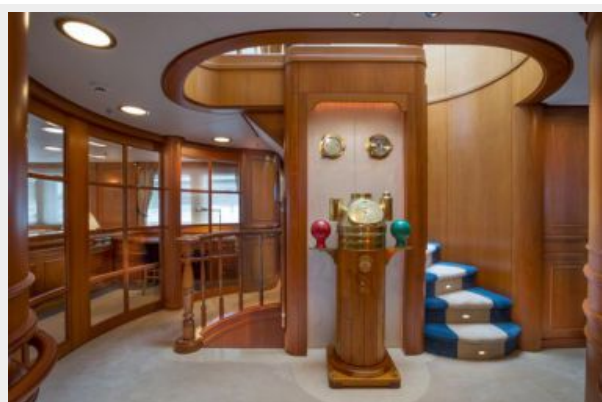
Отказ от ответственности

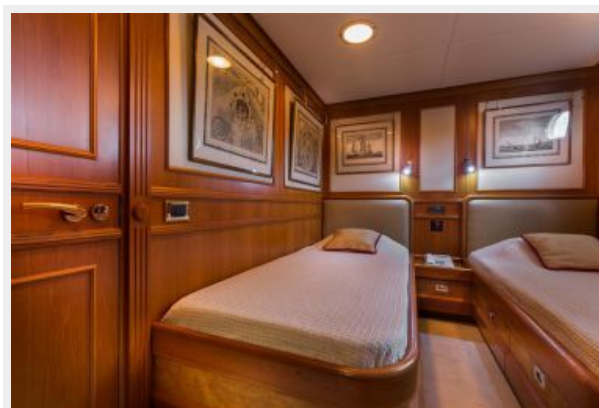
Компания предоставляет описание судна или яхты добросовестно, но не может гарантировать точность этой информации, а также не ручается за техническое состояние. Покупатель должен проинструктировать своих агентов или оценщиков исследовать представленную информацию более подробно, по собственному желанию. Продажа судна или яхты, изменение цены или снятие с продажи будет происходить без предварительного уведомления.

ФОТОГРАФИИ

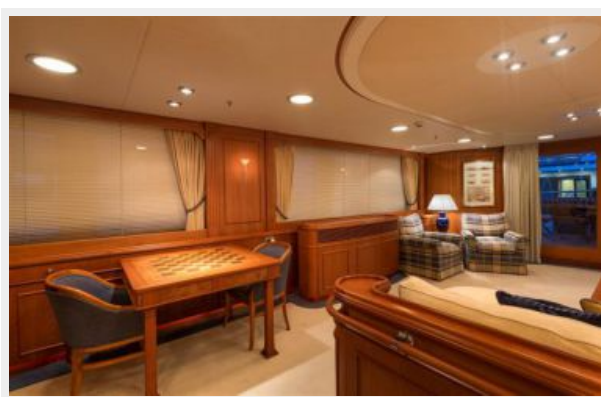
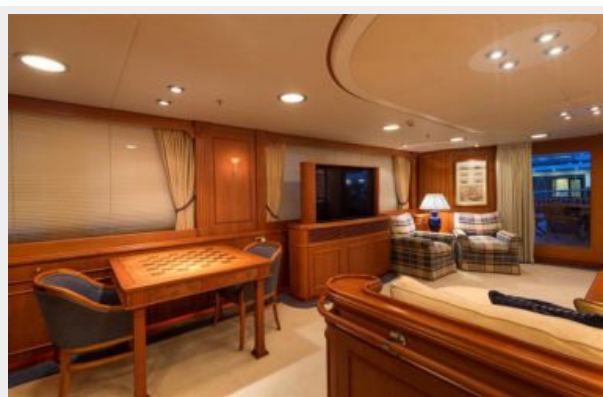
Profile





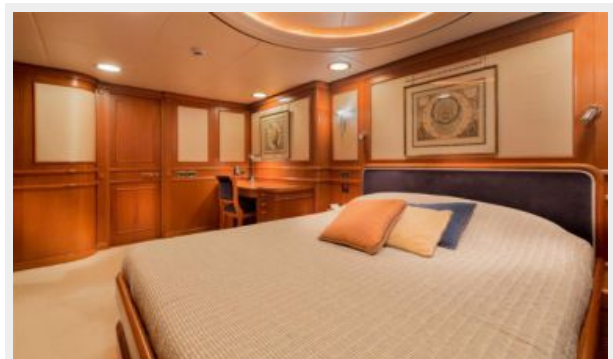




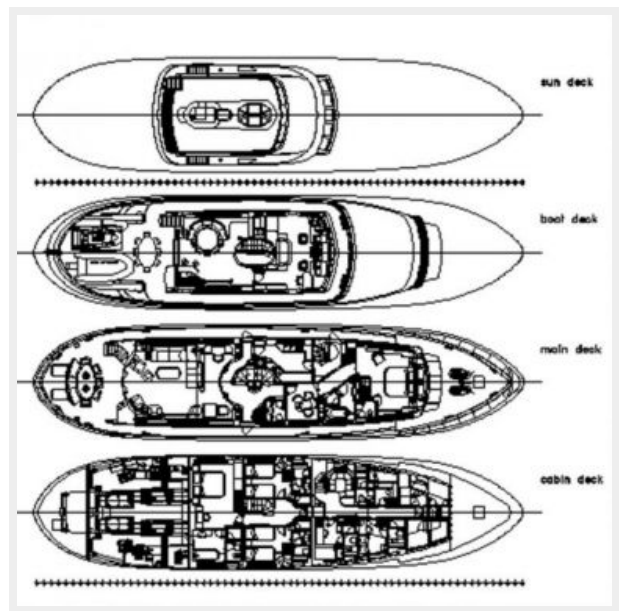
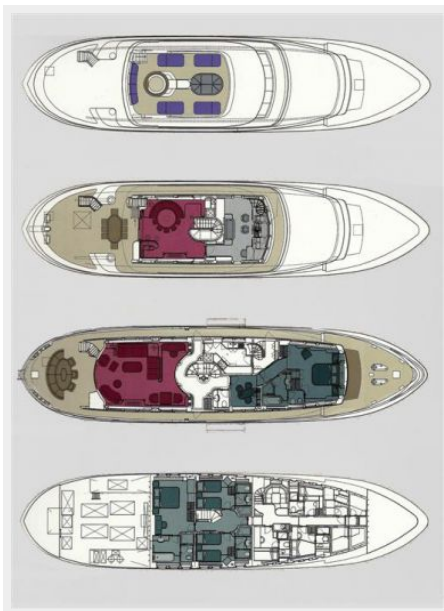












КОНТАКТЫ

Андрей Шестаков (Andrey Shestakov) – ведущий яхтенный брокер отдела продаж яхт и судов компании Shestakov Yacht Sales Inc. Официальный представитель Shestakov Yacht Sales Inc. для русскоговорящих клиентов в центральном офисе компании в Майами/Форт Лодердейл/Флорида/США.

Контактная информация

Email: andrey@shestakovyachtsales.com

Web: shestakovyachtsales.com

Телефоны

Краснодарский край: **+7(918)465-66-44**

США, Майами, Флорида: **+1(954)274-4435**

Время работы

Понедельник – Суббота: **9:00 - 21:00**
EDT

Воскресенье: **Закрито**

Адрес



Harbour Towne Marina, 850 NE 3rd St,
STE 213, Dania, FL 33004