

DB9 — PALMER JOHNSON



Судостроитель: PALMER JOHNSON

Год постройки: 2005

Модель: Промысловое судно

Цена: **ЦЕНА ЯХТЫ ПО ЗАПРОСУ**

Местонахождение: France

Длина общая: 119' 10" (36.50m)

Ширина: 23' 4" (7.10m)

Макс. осадка: 6' 7" (2.00m)

Крейс. скорость: 25 Kts. (29 MPH)

Макс. скорость: 30 Kts. (35 MPH)

Купить **DB9 — PALMER JOHNSON** а также выбрать подходящую вам яхту из нашего каталога яхт вам поможет опытный яхтенный брокер Андрей Шестаков. На сегодняшний день компания **Shestakov Yacht Sales Inc.** имеет большое количество яхт в собственном списке продаж, а также тесно сотрудничает со всеми крупными яхтенными производителями по всему миру.

Для того чтобы купить яхту **DB9 — PALMER JOHNSON** а также проконсультироваться по любому вопросу связанному с покупкой, продажей, чартером яхт позвоните по телефону **+7(918)465-66-44**.

ОГЛАВЛЕНИЕ

ОГЛАВЛЕНИЕ	2
ХАРАКТЕРИСТИКИ	3
Обзор	3
Основная информация	3
Размеры	3
Скорость, вместимость и масса	3
Размещение	4
Корпус и палуба	4
Информация о двигателе	4
ПОДРОБНОЕ ОПИСАНИЕ	5
Audio And Visual Equipment	5
Electronics and Navigational Equipment	5
Engine /Mechanical Equipment	6
Galley	8
Hull	8
Laundry Room	9
Remarks	9
Safety And Fire Protection	9
Tenders	10
Исключения	10
Отказ от ответственности	10
ФОТОГРАФИИ	12
КОНТАКТЫ	14
Контактная информация	14
Телефоны	14
Время работы	14
Адрес	14

ХАРАКТЕРИСТИКИ

Обзор

Perfect vessel with an unique Jacuzzi feature on the aft deck. Fast and reliable DB9 is a good charter vessel.

Основная информация

Тип судна: Промысловое судно

Модельный год: 2005

Год постройки: 2005

Страна: France

Открытая палуба мостика: Да

Размеры

Длина общая: 119' 10" (36.50m)

Длина по ватерлинии: 106' 0" (32.30m)

Ширина: 23' 4" (7.10m)

Макс. осадка: 6' 7" (2.00m)

Трапы: 11' 10" (3.60m)

Скорость, вместимость и масса

Крейс. скорость: 25 Kts. (29 MPH)

Дальность на крейсерской скорости:
900

Макс. скорость: 30 Kts. (35 MPH)

Водоизмещение: 130072.73458 Pounds

Чистый вес: 197 Pounds

Вместимость воды: 1003.8537976
Gallons

Вместимость сточного бака: 528.344104
Gallons

Объем топливного бака: 7000.559378
Gallons

Расход топлива: 198.129039 Gallons

Размещение

Всего кают: 4

Всего коек: 5

Корпус и палуба

Материал корпуса: Aluminum

Материал палубы: Teak

Информация о двигателе

Двигатели: 2

Производитель: MTU

Модель: M90 4000

Тип двигателя: Inboard

Тип топлива: Diesel

ПОДРОБНОЕ ОПИСАНИЕ

Audio And Visual Equipment

ENTERTAINMENT SYSTEMS

The following entertainment systems were seen on board:

One (1) GYROTRAC G8 satellite television system.

One (1) GYROTRAC G6 satellite television system.

Two (2) SKY DIGIBOX decoders in the wheelhouse.

Two (2) ASTON decoders in the wheelhouse.

One (1) LANTIC central entertainment system with sound and video servers, one (1) POWERWAVE UPS and two (2) LACE 500 GB hard drives.

Two (2) FUJITSU plasma screens in the saloon and in the Master's cabin with 5.1 Dolby surround system.

Four (4) LG LCD screens, in each guest cabin and in the Captain's cabin.

One (1) VIEW SONIC LCD screen in the crew mess.

Two (2) LCD screens on the aft deck and on the flybridge.

Four (4) EIGER VISION LCD screens/DVD players in the starboard and forward crew cabins.

Nine (9) CD/DVD players next to each DVD or plasma screen.

Electronics and Navigational Equipment

NAVIGATIONAL & RADIO EQUIPMENT

The following navigational and radio equipment were seen on board:

One (1) FURUNO 120 nautical miles radar/chart plotter. The C MAP Chart portfolio includes the western Mediterranean and the Tyrrhenian seas.

Two (2) LEICA MX420 GPS receivers including one (1) with AIS.

One (1) RAYMARINE H6 navigation system with depth sounder, speedo, wind direction and speed, compass, fishfinder, tides, GPS receiver and chart plotter with electronic charts for the Mediterranean sea. Two (2) LCD screens and two (2) ST2 90 repeaters in the wheelhouse, two (2) ST40 BIDATA repeaters at the wing stations, one (1) ST 90 repeater in the Captain's cabin and two (2) ST60 repeaters in the guest cabin cofferdam.

One (1) PC with ADMIRAL CHARTS plotter.

Two (2) RAY240 VHF radios with DSC installed in the wheelhouse, with repeaters in the crew mess and in the forward crew cabin.

Two (2) ICOM waterproof portable VHF radios with one (1) spare battery (expiry date August 2009).

Two (2) ACR GMDSS waterproof portable VHF radios, battery expiry date April 2010.

One (1) SPERRY NAVIPILOT 4000 autopilot.

One (1) SPERRY SR-180MK1 gyrocompass with repeater on the wheelhouse console.

One (1) RITCHIE magnetic compass. A deviation card dated 17th June 2005 was sighted on board.

One (1) rudder angle indicator with repeaters on the wing stations and in the emergency steering station.

One (1) Inmarsat C satellite telecommunication system.

One (1) KVH TRACPHONE Fleet 55 satellite telecommunication system.

One (1) barometer.

One (1) clock.

Engine /Mechanical Equipment

One (1) hydraulic bow thruster

One set (1) HUMPHREE interceptors are fitted at the transom

(2) stabilizers stainless steel fins QUANTUM.

(2) MTU 12V4000 DDEC M90 twelve cylinder turbocharged diesel

engines rated 2,735 kW @ 2,100 rpm each. Engine serial numbers are 5262001611

(starboard) and 5262001610 (port).

TWIN DISC MG6984A, ratio 2.93:1, direct drive gearboxes

(1) ALFA LAVAL MIB303S-13 centrifugal plant.

(2) SEA RECOVERY watermakers

(1) BILGE BOY oil/water separator is installed in the engine

(1) CRUISAIR reversible air conditioning unit with a capacity of 192,000 BTU

(1) HAMANN sewage treatment plant

(1) QUINCY 310 air compressor is installed in the lazarette.

(2) KILOPAK 0545HKPHE83AL, 54kW, 380V/50Hz generators with JOHN

DEERE four cylinders diesel engines. (430 hours 06/09/2012)

Galley

Galley

The galley located on the lower deck, next to the crew mess is provided with:

One (1) MIELE 4 ring induction vitroceramic electrical hob

One (1) WOLF electric oven

One (1) plate warmer

One (1) SIEMENS microwave oven

Two (2) SUBZERO refrigerators with freezer compartments.

One (1) BROAN trash compactor

One (1) MIELE dishwasher

One (1) extractor fan

One (1) deep stainless steel sink with macerator

Hull

General

The hull bottom has a deadrise angle of about 15° at the transom. The propellers are set in semi-tunnels enabling the engines to be situated further aft, also improving the propellers efficiency by reducing the shaft angle and reducing the draught

Hull Structure

The hull structure is welded aluminium alloy plates and extrusions. According to the construction drawings sighted on board, the hull shell plating thickness is 3/4" for the keel strake, 1/4" for the rest of the bottom and 3/16" for the sides. Thicker inserts have been welded in the way of the shaft tunnels (3/8"), around the main seachests (1/2") and around the stabilizer shafts (5/8"). The hull is longitudinally framed. The frames are

welded T sections with 1/4" webs and 4" x 5/16" flanges, spaced 1000 mm center to center. The extruded hull stringers are 3 1/2" x 2 1/2" x 1/4" L sections spaced 300 mm center to center. The double bottom tanks have 3/16" tank tops and sides. The hull is fitted with four (4) watertight bulkheads located as follows:

Fr. 0 : Aft of the chain locker (collision bulkhead)

Fr. 2 : Forward of the Master's cabin bathroom

Fr. 21: Forward of the engine room

Fr. 27: Aft of the engine room

Laundry Room

Laundry

The laundry, located in the aft crew area, is fitted with:

One (1) MIELE washing machine

One (1) MIELE dryer

One (1) MIELE washing machine/drier

Remarks

An exceptional vessel, DB9, built by the prestigious shipyard Palmer & Johnson and designed by Nuvolari & Lenard. This semi-open yacht offers the best of both worlds, Open and Fly, with a very modern concept and design.

A remarkable Jacuzzi on the aft deck, four guest cabins and a secluded and discreet top deck that leaves the sporty lines of this eye catching vessel unspoilt. Built to the highest standards with exclusive materials, DB9's interior offers a combination of well being and luxury.

Safety And Fire Protection

FIRE FIGHTING EQUIPMENT (FFE)

The following equipment was seen on board:

Six (6) 5 lbs (2A/10B) dry powder portable fire extinguishers.

One (1) 1 kg (8A/34B) dry powder portable fire extinguisher.

Three (3) 10 lbs (4A/80B) dry powder portable fire extinguishers.

Two (2) 20 lbs (20A/120B) dry powder portable fire extinguishers.

One (1) 20 lbs CO2 portable fire extinguisher.

One (1) 192 lbs FM200 remotely operated fixed fire extinguishers for the engine room. This can be operated from the galley or from the lazarette.

One (1) YANMAR L100EED, 7.1 kW @ 3100 rpm diesel engine driven portable bilge/fire pump.

One (1) fireman suits with two (2) breathing apparatus and cylinders.

One (1) fireman axe.

One (1) DECKMA fire detection system with control panel in the wheelhouse, sirens in the engine room, in the forward and aft crew areas and in the wheelhouse and smoke/heat detectors throughout the boat.

Tenders

One (1) CASTOLDI JET TENDER 15 rigid inflatable bottom (RIB) tender, LOA 4.45, Hull Identification Number (H.I.N): IT-CAST1538D505.

Исключения

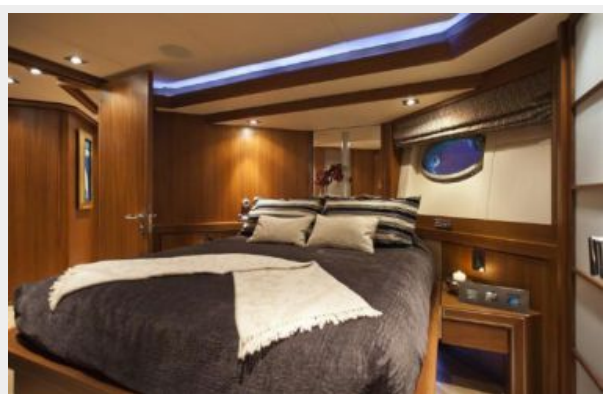
При продаже яхты исключаются личные вещи владельца.

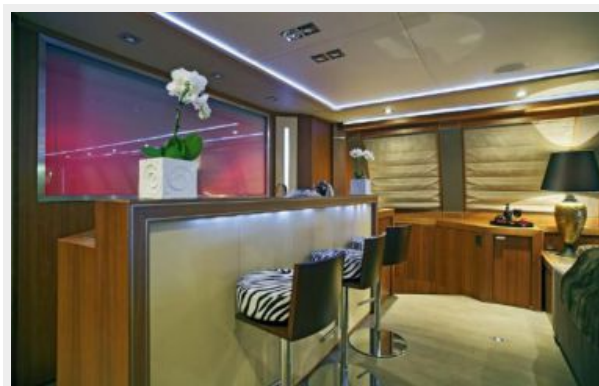
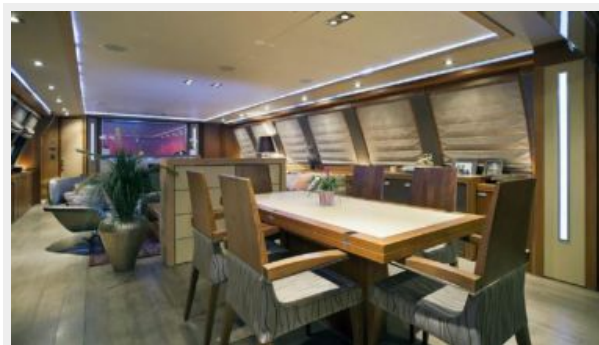
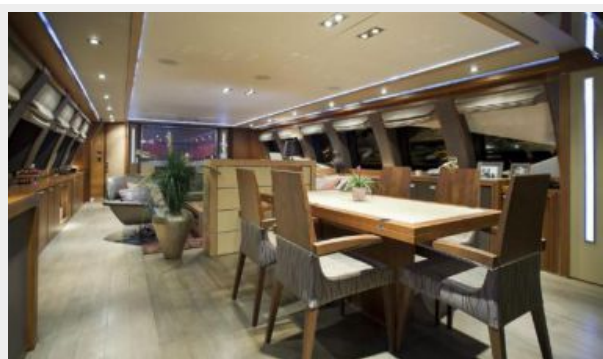
Отказ от ответственности

Компания предоставляет описание судна или яхты добросовестно, но не может гарантировать точность этой информации, а также не ручается за техническое состояние. Покупатель должен проинструктировать своих агентов или оценщиков исследовать представленную информацию более подробно, по собственному желанию.

Продажа судна или яхты, изменение цены или снятие с продажи будет происходить без предварительного уведомления.

ФОТОГРАФИИ





КОНТАКТЫ

Андрей Шестаков (Andrey Shestakov) – ведущий яхтенный брокер отдела продаж яхт и судов компании Shestakov Yacht Sales Inc. Официальный представитель Shestakov Yacht Sales Inc. для русскоговорящих клиентов в центральном офисе компании в Майами/Форт Лодердейл/Флорида/США.

Контактная информация

Email: andrey@shestakovyachtsales.com

Web: shestakovyachtsales.com

Телефоны

Краснодарский край: **+7(918)465-66-44**

США, Майами, Флорида: **+1(954)274-4435**

Время работы

Понедельник – Суббота: **9:00 - 21:00**
EDT

Воскресенье: **Закрето**

Адрес



Harbour Towne Marina, 850 NE 3rd St,
STE 213, Dania, FL 33004