

## KALEIDOSCOPE — LAZZARA



**Builder:** LAZZARA

**Year Built:** 2001

**Model:** Motor Yacht

**Price:** PRICE ON APPLICATION

**Location:** United States

**LOA:** 80' 0" (24.38m)

**Beam:** 19' 1" (5.82m)

**Min Draft:** 4' 6" (1.37m)

**Cruise Speed:** 22 Kts. (25 MPH)

**Max Speed:** 26 Kts. (30 MPH)

Our experienced yacht broker, Andrey Shestakov, will help you choose and buy a yacht that best suits your needs **KALEIDOSCOPE — LAZZARA** from our catalogue. Presently, at Shestakov Yacht Sales Inc., we have a wide variety of yachts available on our sale's list. We also work in close contact with all the big yacht manufacturers from all over the world.

If you would like to buy a yacht **KALEIDOSCOPE — LAZZARA** or would like help answering any questions concerning purchasing, selling or chartering a yacht, please call **+1(954)274-4435**

# TABLE OF CONTENTS

TABLE OF CONTENTS	2
SPECIFICATIONS	5
Basic Information	5
Dimensions	5
Speed, Capacities and Weight	5
Accommodations	5
Hull and Deck Information	5
Engine Information	5
DETAILED INFORMATION	6
Broker Remarks	6
Salon	6
Dining	6
Galley	6
Office/Study	7
Master Stateroom	7
VIP Stateroom - Port and Starboard	7
Captains Cabin	7
Crew Quarters	8
Sky Lounge	8
Electronics and Navigational Equipment	8
Deck and Hull	9
Foredeck	9
Aft deck	9
Cockpit	10
Mechanical Equipment and Engine Room	10
Electrical System	11
Exclusions	11
Disclaimer	11

---

PHOTOS	12
Aft Deck	12
Aft Deck	12
Aft Deck	12
Salon	12
Salon	12
Salon	12
Dining	13
Galley	13
Galley	13
Galley Dining	13
Stairwell	13
Master Stateroom	13
Master Stateroom	14
Master TV	14
Master Bath	14
Master Head Sinks	14
Master Head	15
Master Foyer	15
Port Guest Stateroom	15
Port Guest Stateroom	15
Port Guest Stateroom Head	16
Starboard Aft Guest Stateroom	16
Captains Cabin	16
Starboard Aft Guest Stateroom	16
Crew Quarters	17
Crew Quarters	17
Crew Quarters	17
Helm	17

---

---

Sky Lounge	17
Helm Seating	17
Sky Lounge	18
Desk and Seating	18
Convertible Settee	18
Lounge and Grill	18
Port Engine	18
Starboard Engine	18
Genset	19
Other	19
Other	19
CONTACTS	20
Contact details	20
Telephones	20
Office hours	20
Address	20

---

# SPECIFICATIONS

---

## Basic Information

---

**Category:** Motor Yacht

**Model Year:** 2001

**Year Built:** 2001

**Country:** United States

## Dimensions

---

**LOA:** 80' 0" (24.38m)

**Beam:** 19' 1" (5.82m)

**Min Draft:** 4' 6" (1.37m)

## Speed, Capacities and Weight

---

**Cruise Speed:** 22 Kts. (25 MPH)

**Max Speed:** 26 Kts. (30 MPH)

**Displacement:** 103000 Pounds

**Water Capacity:** 350 Gallons

**Fuel Capacity:** 2350 Gallons

## Accommodations

---

**Total Cabins:** 5

## Hull and Deck Information

---

**Hull Material:** Fiberglass

**Deck Material:** Fiberglass

## Engine Information

---

**Engines:** 2

**Manufacturer:** MTU

**Engine Type:** Inboard

**Fuel Type:** Diesel

---

# DETAILED INFORMATION

---

## Broker Remarks

---

**KALEIDOSCOPE's** layout includes three staterooms amidships and two additional cabins forward that can be used either for crew or additional guests. All staterooms include en-suite heads in addition there is a day head. A country kitchen design is one of the many fabulous entertaining areas for you and your guests. The birds-eye maple wood interior has custom fabrics on all spreads, shams, accent pillows, valences, and new carpeting throughout the vessel.

## Salon

---

The Salon of **KALEIDOSCOPE** is spacious and offers numerous entertaining options. A comfortable seating arrangement includes a spacious leather sofa and two barrel chairs covered in designer ultra-suede fabric, accompanied by custom cocktail tables. Extending from the port side is a unique custom designed complete entertainment center consisting of Sony television, multi-DVD player, VHS player and complete around sound amplifier equipment. Also starboard, a custom bar cabinet. All accessories and coordinates are in custom designer fabrics.

## Dining

---

Forward of the Salon is the formal Dining area featuring a birds-eye maple wood table. Surrounding the table are six chairs done in custom fabrics with wood and iron design that complements the entire area. Forward is an additional cabinet with a mirrored bulkhead and glass display case, which serves as a wonderful place to display artwork and stemware.

## Galley

---

Granite countertops and wood floors add to the beauty of this large galley. A Lazzara standard that are found on larger vessels are wing doors both port and starboard making the foredeck and line handling easily accessible. Forward of the Galley is the raised breakfast nook that seats 5-6 people. Forward windows add light and are complete with Hunter Douglas blackout blinds for privacy.

The galley offers all the amenities of home. All appliances are Kitchen Aid and feature:

- Side-by-side refrigerator/freezer
- Convection oven and microwave
- 4-Burner ceramic stovetop
- Trash compactor

- Stainless steel side-by-side sinks
- Insta hot water
- Fresh water system
- Icemaker

---

## Office/Study

---

- Lacquered desk with drawers and chair
- Bookshelves
- Opening port
- Reading light
- One of two on board washer/dryer sets
- Access to electronics and air conditioning compressors
- Refrigerator

---

## Master Stateroom

---

The Master Stateroom Suite will surely be inviting after a day of fun. Relax on a king size bed adorned in custom fabrics, accessories, and window treatments or relax on a settee with a good book. This room also includes vanity, chair and on the starboard side of the suite, walk-in closet with a safe, entertainment center, large mirrors, beautiful lamps, and his and her armoires.

The Master Head has a built-in Jacuzzi tub with two showerheads, his/her sinks. To complete the room there is beautiful marble countertops, flooring and ample storage space for linens and toiletries.

---

## VIP Stateroom - Port and Starboard

---

Both VIP Staterooms have queen size beds covered in custom bedding and fabrics. There is ample under bunk drawer storage, cedar-lined hanging locker and a complete entertainment center for your guest's pleasure.

The en-suite heads are finished beautifully with marble tops and flooring, sink, gold fixtures, toilet and stall shower.

---

## Captains Cabin

---

Full size raised berth with storage beneath. Lacquered cabinets of which one includes the entertainment system (TV, VCR, AM/FM stereo, with C/D player). Cedar lined hanging locker with mirrored door; wall mounted reading light; upholstered jump seat; carpeting and indirect lighting.

The en-suite head offers under hung sink with Corian countertop, enclosed shower stall, shampoo rod holder, mirrored cabinet, and toilet.

---

## Crew Quarters

---

The Forward Stateroom provides over/under berths with storage below. Lacquered nightstand with wood veneer top and brass actuator latches. The following completes the room: carpet; hanging locker with mirrored door; indirect lighting; opening port; reading light; entertainment center with TV, VCR, and AM/FM stereo with C/D player.

The en-suite head offers under hung sink with Corian countertop, enclosed shower stall, shampoo rod holder, mirrored cabinet and toilet.

---

## Sky Lounge

---

The Sky Lounge has access from the aft deck or the Galley. A full complement of computers, communications, and navigational equipment make her a state-of-the-art vessel. The helm area has two Recaro electric captain chairs with footrests. Port and starboard side windows slide back manually allowing fresh air to circulate in the room. To starboard is an island/desk and further aft is an electrically operated up and down television in a console. Occasional chairs flank the console. To port there is an electrically operated L-shaped three-cushion lounge. Forward of the lounge is another console with refrigerator. Through a sliding glass door is the sundeck area, which serves as another great place to entertain. Table and L-shaped lounge/sunning pad, electric grill, twin concealed davits and dinghy.

---

## Electronics and Navigational Equipment

---

- Robertson AP20 autopilot w/ remote handset on flybridge
- Simrad Anritsu radar 96-mile color
- Furuno FCV-528L color radar 24 miles/ sounder
- ISIS computer monitoring system of 64 vital functions
- Sea Recovery Reverse osmosis system
- Port and starboard wipers
- Northstar 951X GPS Navigator
- Nobletec NAV navigation system with a dedicated Dell computer
- Datamarine multi-link sounder
- (2) VHF radios
- Hailer
- KVH Trac SAT phone
- Mathers Clear Command controls
- Stabilizer controls



---

## Deck and Hull

---

- Anchor chute, stainless steel
- Electric anchor windlass, vertical with chain stopper
- Hinged boarding gates in bulwark
- Bow, spring and stern cleats
- Deck hatch
- Fiberglass bulwarks and SS stanchions
- Deck fills: water and waste removal
- Fuel fill behind vent grill in hullside
- Dockside water connection
- Deck and hull white gel coat
- Marquipt sea stairs and ladder
- Life raft, serviced 9/12
- Tool kit

---

## Foredeck

---

- Cushioned bench seats are incorporated into the sun pad with storage space underneath the pad
- Fresh water wash down
- Fender lockers
- Windlass system, an additional fortress anchor and a stainless steel plow anchor
- Flag staff
- SS low profile rail
- Bulwark lights

---

## Aft deck

---

- Wrap around seating with storage below
- Vinyl upholstered bench seat cushions
- Refrigerator/icemaker and sink module
- Starboard side additional helm station with remote bow thruster (updated) control
- Aft deck fiberglass bulwarks with stainless steel stanchion railing
- Hinged boarding gates port and starboard
- Lighting under hard top
- Access to side decks
- Stereo speakers
- Teak aft deck
- Aft CCTV color camera

## Cockpit

---

- Stairwell with teak steps and handrail from aft deck
- Fresh water wash down outlet
- Rod holders
- Dockside water connection, port and starboard
- Door and gate to hydraulic swim platform
- Chocks for swim platform (in storage)
- Fresh water shower
- Walk in engine room door with inspection port
- (3) Large storage lockers along forward cockpit wall for diving gear locker, line and fender locker, rod/reel with bait & tackle center and freezer
- (2) Large removable boxes in cockpit sole with hinged, latched lids
- 24-volt macerator pumps
- Fiberglass coaming around cockpit
- New canvas bolsters, 2012

## Mechanical Equipment and Engine Room

---

- Acoustical and thermal insulation in engine room
- Twin diesel MTU 1150 hp engines
- Fresh water-cooled with reduction gearing
- Microphor compressed air toilet system
- Freshwater wash down system
- (2) 20 kW Onan generators
- Seacocks, underwater thru hulls bronze
- Cruisair air conditioner with reverse cycle
- Fire alarm system, manual & automatic
- Electronic engine controls
- Oil transfer system
- Dual Racor fuel filters, main engines
- Single Racor fuel filters, generator
- Fuel priming pumps for engines and generators
- Holding tank with access for pump out
- (2) 230V engine room blowers
- Hydraulic trim tabs, recessed in hull
- Electric bow thruster
- LSR shrouded rudder & drive unit, SS
- Underwater main engine exhaust with idle bypass
- (4) Fins stabilizers
- (4) Bilge pumps
- Sea Recovery 40 gal/hr. water maker
- Central vacuum system
- Engine cooling systems, serviced 2012
- New batteries, 2012

---

## Electrical System

---

- (2) 20 kW generators with sound shields
- Bonded electrical system
- (2) 24 V battery charges port and starboard
- Isolation transformer
- 100A/240 volt shore power inlet, port and starboard with 100' cord
- 24 volt automatic shore power cord reel
- 115V and 24V interior lighting
- Halogen low voltage lighting throughout
- Master control panel with AC/DC circuit breakers
- AC/DC engine room lights
- 24-volt hardtop lights and bulwark lights
- 120-volt duplex receptacles
- Vapor proof battery switches
- International navigation and anchor lights
- Shore power "Y" smart box
- Searchlight with remote control upper station
- Alarms for engines, reduction gears, bilge and generators (audible and visible)

---

## Exclusions

---

Owner's personal belongings.

---

## Disclaimer

---

The Company offers the details of this vessel or yacht in good faith but cannot guarantee or warrant the accuracy of this information nor warrant the condition of the vessel. A buyer should instruct his representatives, agents, or his surveyors, to investigate such details as the buyer desires validated. This vessel or yacht is offered subject to prior sale, price change, or withdrawal without notice.

# PHOTOS

**Aft Deck**



**Aft Deck**



**Aft Deck**



**Salon**



**Salon**



**Salon**



**Dining**



**Galley**



**Galley**



**Galley Dining**



**Stairwell**



**Master Stateroom**





**Master Stateroom**



**Master TV**

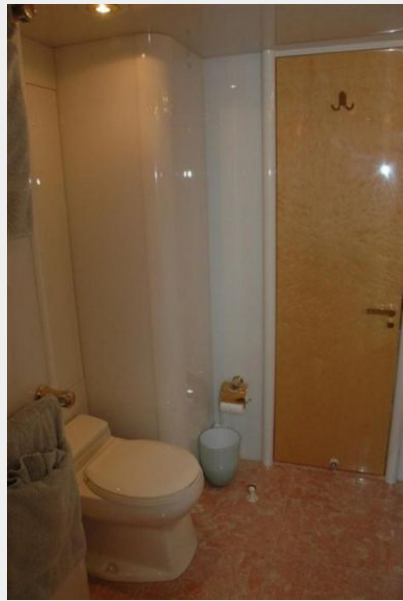


**Master Bath**

**Master Head Sinks**



**Master Head**



**Master Foyer**



**Port Guest Stateroom**



**Port Guest Stateroom**



**Port Guest Stateroom Head**



**Starboard Aft Guest Stateroom**



**Captains Cabin**

**Starboard Aft Guest Stateroom**





**Crew Quarters**



**Crew Quarters**



**Crew Quarters**



**Helm**



**Helm Seating**



**Sky Lounge**



**Sky Lounge**



**Desk and Seating**



**Convertible Settee**



**Lounge and Grill**



**Port Engine**



**Starboard Engine**



**Genset**



**Other**



**Other**



# CONTACTS

---

Andrey Shestakov, leading yacht broker of the sales department of Shestakov Yacht Sales Inc. Shestakov Yacht Sales Inc., the official representative of the Miami/Fort Lauderdale FL headquarters.

## Contact details

---

Email: [andrey@shestakovyachtsales.com](mailto:andrey@shestakovyachtsales.com)

Web: [shestakovyachtsales.com/en/](http://shestakovyachtsales.com/en/)

## Telephones

---

USA: +1(954)274-4435

## Office hours

---

Monday – Saturday: **9:00 - 21:00** EDT

Sunday: **closed**

## Address

---



Harbour Towne Marina, 850 NE 3rd St,  
STE 213, Dania, FL 33004